

UNITED STATES
DEPARTMENT OF THE INTERIOR
GEOLOGICAL SURVEY

APPLICATION FOR PERMIT TO DRILL, DEEPEN, OR PLUG BACK

1a. TYPE OF WORK

DRILL ☒DEEPEN ☒PLUG BACK ☐

b. TYPE OF WELL

OIL WELL ☐GAS WELL ☒OTHER ☐SINGLE ZONE ☒MULTIPLE ZONE ☐

2. NAME OF OPERATOR

SUPRON ENERGY CORPORATION

3. ADDRESS OF OPERATOR

P.O. Box 808, Farmington, New Mexico 87401

4. LOCATION OF WELL (Report location clearly and in accordance with any State requirements.)

At surface

D 790 ft./North line and 895 ft./West line

At proposed prod. zone

Same as above

14. DISTANCE IN MILES AND DIRECTION FROM NEAREST TOWN OR POST OFFICE*

3 1/2 miles north of Farmington, New Mexico

15. DISTANCE FROM PROPOSED*

LOCATION TO NEAREST 790 ft.

PROPERTY OR LEASE LINE, FT. 790 ft.

(Also to nearest drlg. unit line, if any)

18. DISTANCE FROM PROPOSED LOCATION*

TO NEAREST WELL, DRILLING, COMPLETED, 2585 ft.

OR APPLIED FOR, ON THIS LEASE, FT.

16. NO. OF ACRES IN LEASE

2440.00

19. PROPOSED DEPTH

6350 ft.

17. NO. OF ACRES ASSIGNED TO THIS WELL

N 1/2 320.00

20. ROTARY OR CABLE TOOLS

Rotary

21. ELEVATIONS (Show whether DF, RT, GR, etc.)

5548' G.L.

DRILLING OPERATIONS AUTHORIZED ARE

SUBJECT TO COMPLIANCE WITH ATTACHED

PROPOSED LEASING AND DRILLING PROGRAM

This action is subject to administrative

appeal pursuant to 30 CFR 290.

22. APPROX. DATE WORK WILL START*

June 1, 1981

23.

| SIZE OF HOLE | SIZE OF CASING | WEIGHT PER FOOT | SETTING DEPTH | |
|--------------|----------------|-----------------|---------------|-----------------------------------|
| 12-1/4" | 8-5/8" | 24.00 | 250 ft. | 150 sx circulated-cover Ojo Alamo |
| 7-7/8" | 4-1/2" | 10.50 | 6350 ft. | 950 sx |

We desire to drill 12 1/4" surface hole to approximately 250 ft. using natural mud as a circulating medium and run new 8-5/8" surface pipe. Cement in place circulating cement back to surface. Test the surface casing. Drill 7-7/8" hole using a starch base mud to T.D. of approximately 6350 ft. Log the well. Run new 4 1/2", 10.50# casing with a D.V. tool at approximately 4300 ft. Cement the first stage with approximately 550 sx of 50-50 POZ. Cement the second stage with approximately 550 sx of 65-35 POZ followed by 50 sx of class "B" cement. Pressure test the casing. Perforate and fracture the Dakota zone. Clean the well up. Run tubing to the Dakota perforations. Nipple down the wellhead. Test the well and connect to a gathering system.

This gas has previously been dedicated to a transporter.

IN ABOVE SPACE DESCRIBE PROPOSED PROGRAM: If proposal is to deepen or plug back, give data on present productive zone and proposed new productive zone. If proposal is to drill or deepen directionally, give pertinent data on subsurface locations and measured and true vertical depths. Give blowout preventer program, if any.

24.

SIGNED

Rudy D. Motto

TITLE

Area Superintendent

DATE April 6, 1981

(This space for Federal or State office use)

PERMIT NO.

APPROVAL DATE

APPROVED BY

TITLE

CONDITIONS OF APPROVAL, IF ANY:

NMOCC

APPROVED
AS AMENDEDAPR 20 1981
James F. Sims
DISTRICT ENGINEER

WELL LOCATION AND ACREAGE DEDICATION PLAT

Supersedes C-128
Effective 1-1-83

All distances must be from the outer boundaries of the Section.

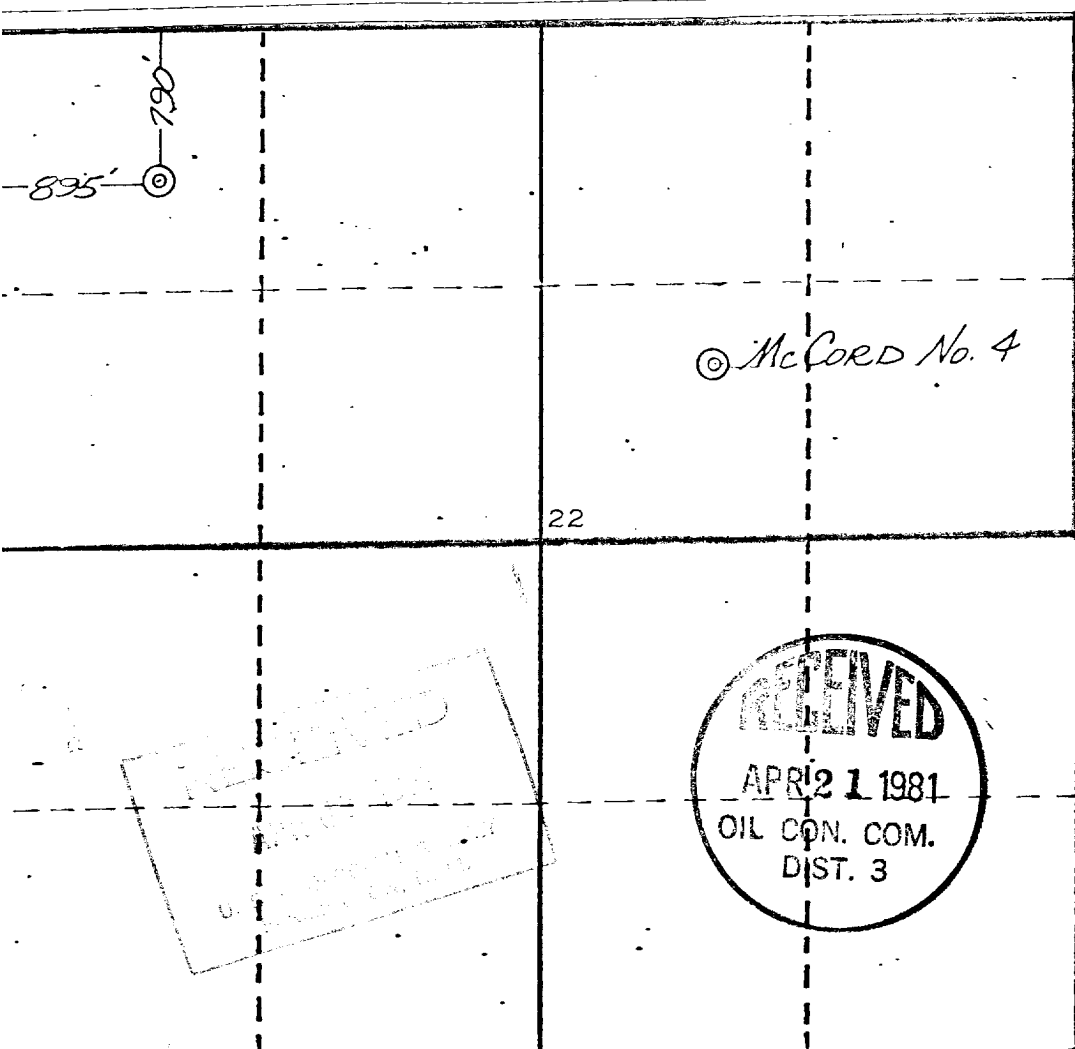
| | | | | |
|--|--------------------------------------|-----------------------------|--|---------------------------|
| Lessee SUPRON ENERGY CORPORATION | | Lease MCCORD | | Well No. 4E |
| Well Letter D | Section 22 | Township 30 NORTH | Range 13 WEST | County SAN JUAN |
| Actual Footage Location of Well | | | | |
| 790 | feet from the NORTH | line and | 895 | feet from the WEST |
| Well Level Elev. 5548 | Producing Formation Dakota | Pool Basin | Dedicated Acreage N$\frac{1}{2}$ 320.00 Acres | |

1. Outline the acreage dedicated to the subject well by colored pencil or hatchure marks on the plat below.
2. If more than one lease is dedicated to the well, outline each and identify the ownership thereof (both as to working interest and royalty).
3. If more than one lease of different ownership is dedicated to the well, have the interests of all owners been consolidated by communitization, unitization, force-pooling, etc?

☐ Yes ☐ No If answer is "yes," type of consolidation _____

If answer is "no," list the owners and tract descriptions which have actually been consolidated. (Use reverse side of this form if necessary.) _____

No allowable will be assigned to the well until all interests have been consolidated (by communitization, unitization, forced-pooling, or otherwise) or until a non-standard unit, eliminating such interests, has been approved by the Commission.



CERTIFICATION

I hereby certify that the information contained herein is true and complete to the best of my knowledge and belief.

Rudy D. Motto

Name

Rudy D. Motto

Position

Area Superintendent

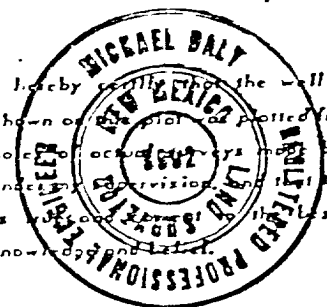
Company

SUPRON ENERGY CORPORATION

Date

April 6, 1981

I hereby certify that the well location shown on this plat was plotted from field notes or actual surveys made by me or under my supervision, and that the same is true and correct to the best of my knowledge and belief.



Date Surveyed

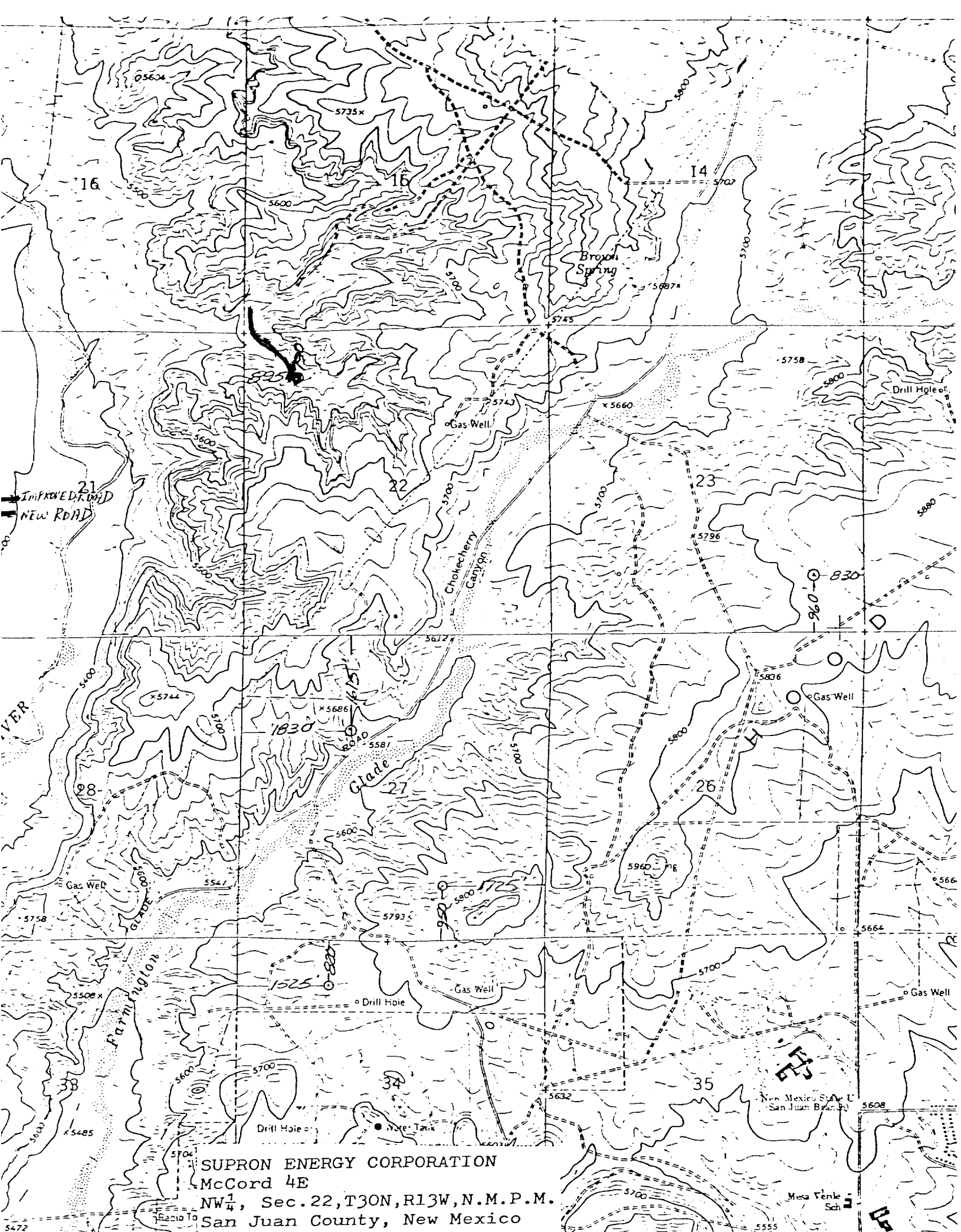
March 18, 1981

Registered Professional Engineer and/or Land Surveyor

Michael Daly
Michael Daly

Certificate No.

5992



SUPRON ENERGY CORPORATION
McCord 4E
NW $\frac{1}{4}$, Sec. 22, T30N, R13W, N.M.P.M.
San Juan County, New Mexico