

UNITED STATES
DEPARTMENT OF THE INTERIOR
GEOLOGICAL SURVEY30-045-25006
5. LEASE DESIGNATION AND SERIAL NO.

SF 078214

6. IF INDIAN, ALLOTTEE OR TRIBE NAME

7. UNIT AGREEMENT NAME

8. FARM OR LEASE NAME

McCord

9. WELL NO.

5-E

10. FIELD AND POOL, OR WILDCAT

Basin Dakota

11. SEC., T., R., M., OR BLK.
AND SURVEY OR AREASec. 27, T-30N, R-13W
N.M.P.M.

12. COUNTY OR PARISH

San Juan

13. STATE

New Mexico

1a. TYPE OF WORK

DRILL ☒DEEPEN ☐PLUG BACK ☐

b. TYPE OF WELL

OIL
WELL ☐GAS
WELL ☒

OTHER

SINGLE
ZONE ☒MULTIPLE
ZONE ☐

2. NAME OF OPERATOR

Supron Energy Corporation

3. ADDRESS OF OPERATOR

P.O. Box 808, Farmington, New Mexico 87401

4. LOCATION OF WELL (Report location clearly and in accordance with any State requirements.)
At surface

950 Ft./South; 1725 Ft./East line

At proposed prod. zone Same as above

14. DISTANCE IN MILES AND DIRECTION FROM NEAREST TOWN OR POST OFFICE*

1-1/2 Miles North of Farmington, New Mexico

15. DISTANCE FROM PROPOSED*
LOCATION TO NEAREST
PROPERTY OR LEASE LINE, FT.
(Also to nearest drlg. unit line, if any)

950 Ft.

950 Ft.

16. NO. OF ACRES IN LEASE

2440.00

17. NO. OF ACRES ASSIGNED
TO THIS WELL

S/2 320.00

18. DISTANCE FROM PROPOSED LOCATION*
TO NEAREST WELL, DRILLING, COMPLETED,
OR APPLIED FOR, ON THIS LEASE, FT.

2105 Ft.

6510 Ft.

20. ROTARY OR CABLE TOOLS

Rotary

21. ELEVATIONS (Show whether DF, RT, GR, etc.)

5740 GL

22. APPROX. DATE WORK WILL START*

May 18, 1981

23. PROPOSED CASING AND CEMENTING PROGRAM

SIZE OF HOLE	SIZE OF CASING	WEIGHT PER FOOT	SETTING DEPTH	QUANTITY OF CEMENT
12-1/4"	8-5/8"	24.00	350 Ft.	175 Sx. Circulated - Cover Alamo
7-7/8"	4-1/2"	10.50	6510 Ft.	950 Sx.

We desire to drill 12-1/4" surface hole to approximately 350 ft. with natural mud. Run new 8-5/8", 24.00# casing to T.D. & cement circulating cement back to surface and covering the Ojo Alamo zone. Test the casing. Drill 7-7/8" hole using a starch base mud to approx. 6510 ft. Log the well. Run new 4-1/2", 10.50# casing with a D.V. tool at approx. 4500 ft. Cement 1st stage with approx. 350 sx. of 50-50 poz. Cement the second stage with approx. 550 sx. of 65-35 poz followed by 50 sx of class "B" cement. Pressure test the casing. Perforate and frac the Dakota zone. Clean the well out. Run tubing and set in the Dakota zone. Nipple down the wellhead. Test the well & connect to a gathering system.

This gas has previously been dedicated to a transporter.

IN ABOVE SPACE DESCRIBE PROPOSED PROGRAM: If proposal is to deepen or plug back, give data on present productive zone and proposed new productive zone. If proposal is to drill or deepen directionally, give pertinent data on subsurface locations and measured and true vertical depths. Give blowout preventer program, if any.

24.

SIGNED

Rudy D. Morro

TITLE

Area Superintendnet

DATE April 7, 1981

(This space for Federal or State office use)

PERMIT NO.

APPROVAL DATE

APPROVED BY

TITLE

CONDITIONS OF APPROVAL, IF ANY:

APPROVED
AS AMENDEDAPR 20 1981.
James F. Sims
JAMES F. SIMS
DISTRICT ENGINEER

All distances must be from the outer boundaries of the Section.

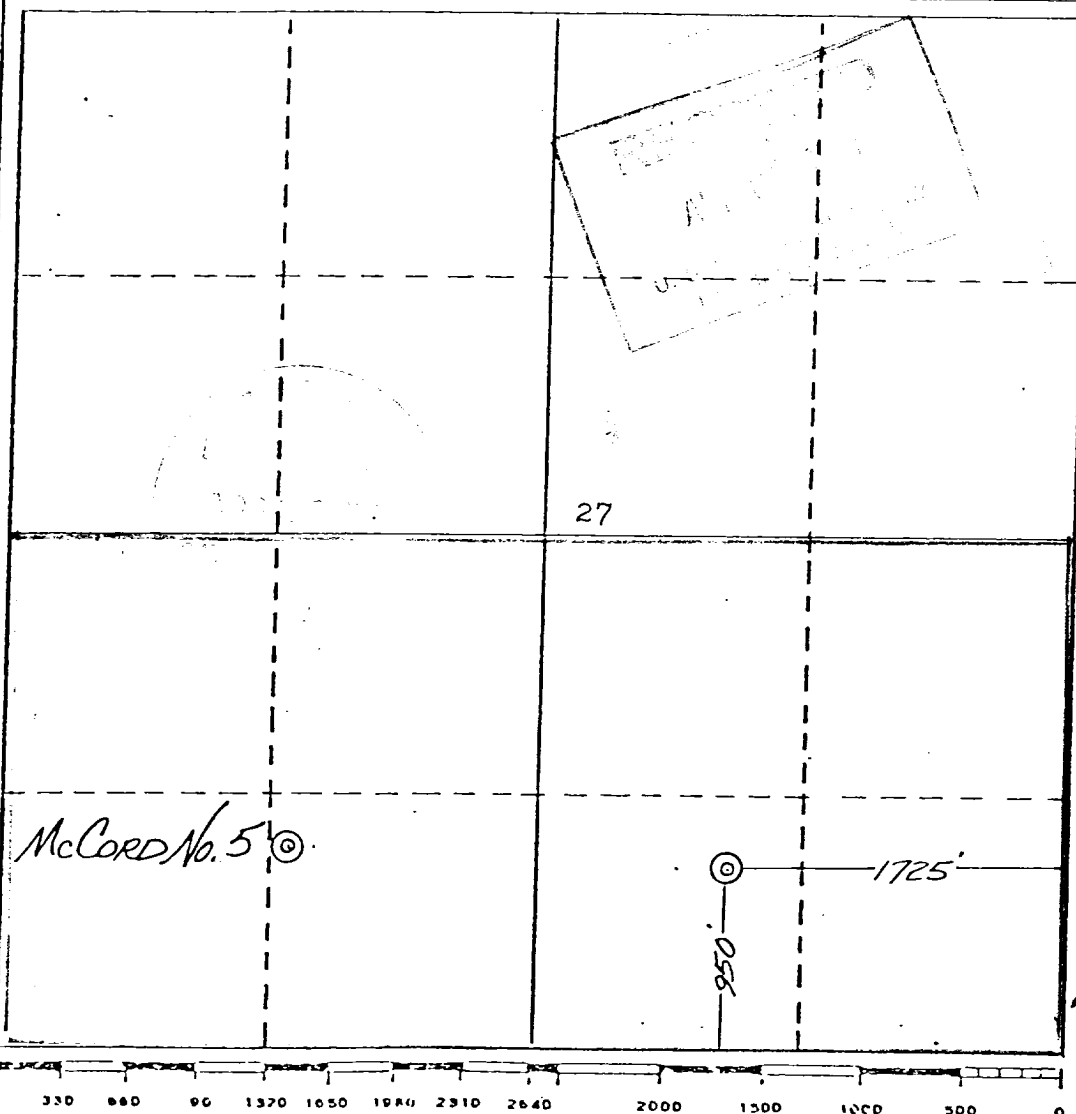
Operator SUPRON ENERGY CORPORATION			Lease MCCORD		Well No. 5E
Unit Letter 0	Section 27	Township 30 NORTH	Range 13 WEST	County SAN JUAN	
Actual Footage Location of Well: 950 feet from the SOUTH line and 1725 feet from the EAST line					
Ground Level Elev. 5740	Producing Formation DAKOTA		Pool BASIN	Dedicated Acreage: S/2 320.00 Acres	

1. Outline the acreage dedicated to the subject well by colored pencil or hatchure marks on the plat below.
2. If more than one lease is dedicated to the well, outline each and identify the ownership thereof (both as to working interest and royalty).
3. If more than one lease of different ownership is dedicated to the well, have the interests of all owners been consolidated by communitization, unitization, force-pooling, etc?

☐ Yes ☐ No If answer is "yes," type of consolidation _____

If answer is "no," list the owners and tract descriptions which have actually been consolidated. (Use reverse side of this form if necessary.) _____

No allowable will be assigned to the well until all interests have been consolidated (by communitization, unitization, forced-pooling, or otherwise) or until a non-standard unit, eliminating such interests, has been approved by the Division.



CERTIFICATION

I hereby certify that the information contained herein is true and complete to the best of my knowledge and belief.

Name

Rudy D. Motto

Position

Area Superintendent

Company

Supron Energy Corporation

Date

April 7, 1981

I hereby certify that the well location shown on this plat was plotted from field notes of actual survey made by me or under my supervision and that the same is true to the best of my knowledge and belief.

Date Surveyed

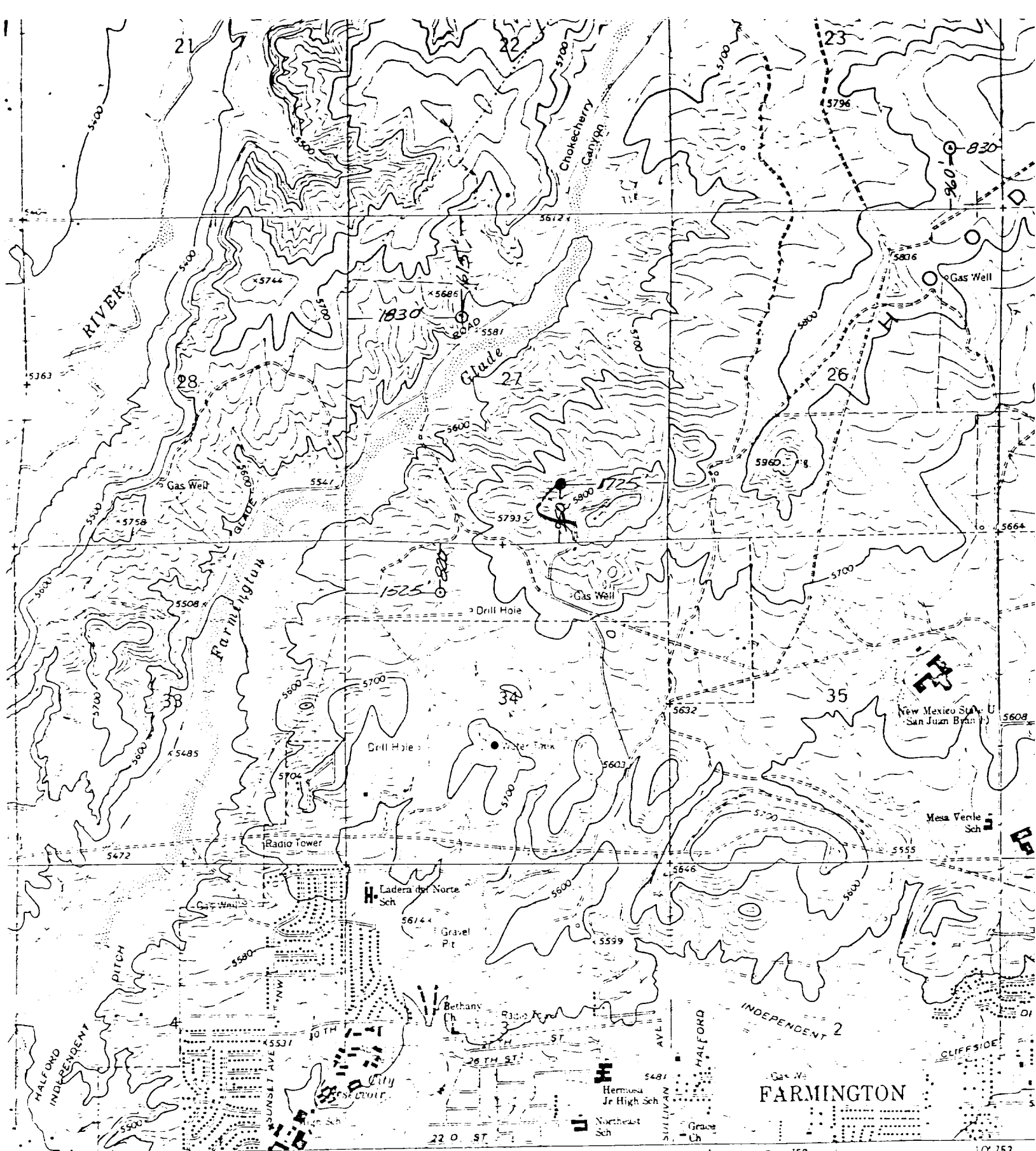
March 18, 1981

Registered Professional Engineer
and/or Land Surveyor

Michael Daly

Certificate No.

5992



SUPRON ENERGY CORPORATION
 McCord 5E
 SE $\frac{1}{4}$, Sec. 27, T30N, R13W, N.M.P.M.
 San Juan County, New Mexico

New Road ⁵²
 Improved Road

5000 6000 7000 FEET

1 KILOMETER

CONTOUR INTERVAL 20 FEET
 DOTTED LINES REPRESENT 10-FOOT CONTOURS
 NATIONAL GEODETIC VERTICAL DATUM OF 1929

