

UNITED STATES
DEPARTMENT OF THE INTERIOR
GEOLOGICAL SURVEY

APPLICATION FOR PERMIT TO DRILL, DEEPEN, OR PLUG BACK

1a. TYPE OF WORK

DRILL ☒DEEPEN ☐

b. TYPE OF WELL

OIL
WELL ☐GAS
WELL ☒OTHER ☐SINGLE
ZONE ☐MULTIPLE
ZONE ☐

2. NAME OF OPERATOR

Northwest Pipeline Corporation

3. ADDRESS OF OPERATOR

P.O. Box 90, Farmington, New Mexico 87401

4. LOCATION OF WELL (Report location clearly and in accordance with any State requirements.)

At surface

1910 FSL & 1840 FEL Sec 7, T31N, R7W

At proposed prod. zone

Same as above

14. DISTANCE IN MILES AND DIRECTION FROM NEAREST TOWN OR POST OFFICE*

Approx 14 miles Northeast of Navajo Dam Post Office

15. DISTANCE FROM PROPOSED*

LOCATION TO NEAREST
PROPERTY OR LEASE LINE, FT.
(Also to nearest drlg. unit line, if any)

562'

16. NO. OF ACRES IN LEASE

317

17. NO. OF ACRES ASSIGNED
TO THIS WELL

317.23

18. DISTANCE FROM PROPOSED LOCATION*

TO NEAREST WELL, DRILLING, COMPLETED,
OR APPLIED FOR, ON THIS LEASE, FT.

4000'

19. PROPOSED DEPTH

6100'

20. ROTARY OR CABLE TOOLS

Rotary

21. ELEVATIONS (Show whether DF, RT, GR, etc.)

6548' GR

22. APPROX. DATE WORK WILL START*

September 1981

23.

PROPOSED CASING AND CEMENTING PROGRAM

SIZE OF HOLE	SIZE OF CASING	WEIGHT PER FOOT	SETTING DEPTH	QUANTITY OF CEMENT
12-1/4"	9-5/8"	36#	200'	125 cu. ft
8-3/4"	7"	20#	3900'	360 cu. ft
6-1/4"	4-1/2"	10.5#	6100'	400 cu. ft

DRILLING OPERATIONS AUTHORIZED ARE
SUBJECT TO COMPLIANCE WITH ATTACHED
"GENERAL REQUIREMENTS"Selectively perforate and stimulate the Mesa Verde Formation. Completion
plans will be determined at Total Depth.This action is subject to administrative
appeal pursuant to 30 CFR 290.A BOP will be installed after the surface casing is set and cemented. All
subsequent work will be conducted through the BOP's.Please refer to the attached surveyors plat for a description of the dedicated
acreage.

Gas is dedicated.

A well in this location was previously applied for by Tenneco and referred to
as the Martin Com #1IN ABOVE SPACE DESCRIBE PROPOSED PROGRAM: If proposal is to deepen or plug back, give data on present productive zone and proposed new productive
zone. If proposal is to drill or deepen directionally, give pertinent data on subsurface locations and measured and true vertical depths. Give blowout
preventer program, if any.

24.

SIGNED

Paul C. Thompson

TITLE Drilling Engineer

DATE 8-13-81

(This space for Federal or State office use)

PERMIT NO.

APPROVAL DATE

APPROVED BY

TITLE

DATE

CONDITIONS OF APPROVAL, IF ANY:

*See Instructions On Reverse Side

(Orig. Sgd.) RAYMOND W. VINYARD

NMOCC

OIL CONSERVATION DIVISION

P. O. BOX 2088

Form C-107
Revised 10-1-7

STATE OF NEW MEXICO

ENERGY AND MINERALS DEPARTMENT

SANTA FE, NEW MEXICO 87501

All distances must be from the outer boundaries of the Section.

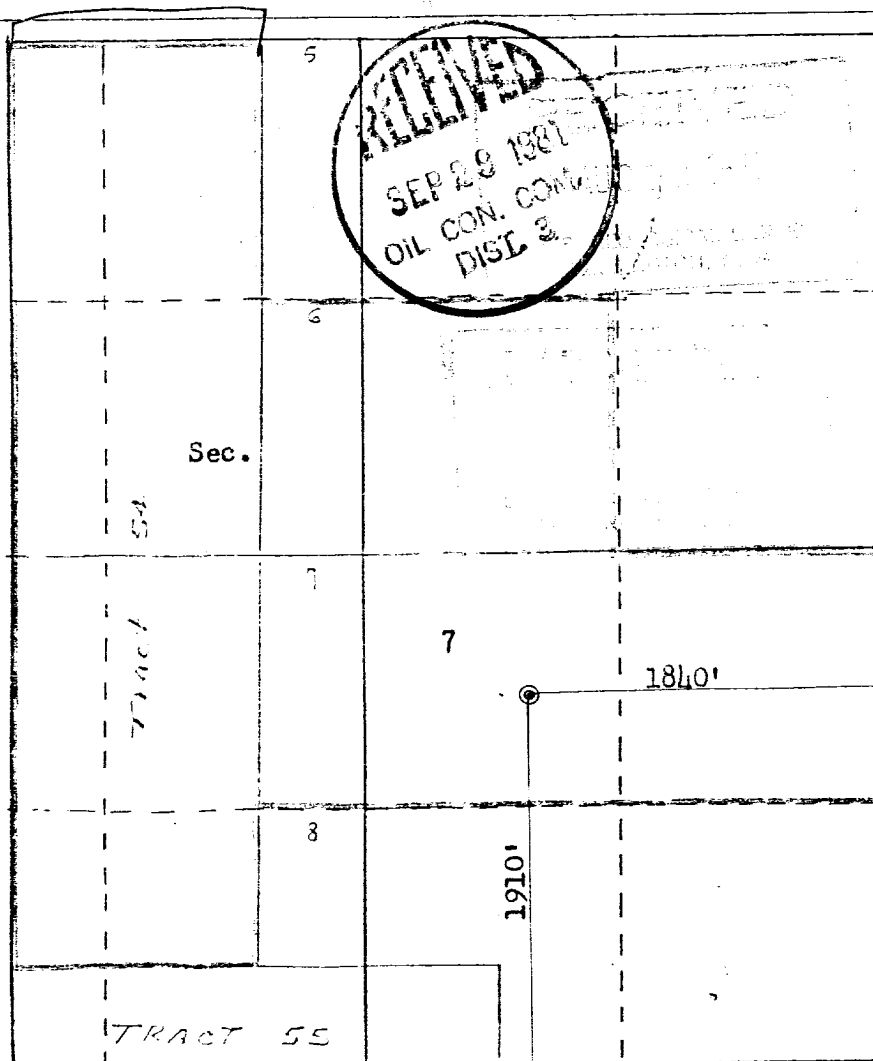
Operator Northwest Pipeline Corporation			Lease San Juan 32-7 Unit Com		Well No. 79
Unit Letter J	Section 7	Township 31N	Range 7W	County San Juan	
Actual Footage Location of Well:					
1910 feet from the South line and		1840 feet from the East line			
Ground Level Elev: 6548	Producing Formation Mesaverde		Pool Blanco Mesa Verde	Dedicated Acreage: 317/ ACRES	

1. Outline the acreage dedicated to the subject well by colored pencil or hachure marks on the plat below.
2. If more than one lease is dedicated to the well, outline each and identify the ownership thereof (both as to working interest and royalty).
3. If more than one lease of different ownership is dedicated to the well, have the interests of all owners been consolidated by communitization, unitization, force-pooling, etc?

☐ Yes ☐ No If answer is "yes," type of consolidation _____

If answer is "no," list the owners and tract descriptions which have actually been consolidated. (Use reverse side of this form if necessary.) _____

No allowable will be assigned to the well until all interests have been consolidated (by communitization, unitization, forced-pooling, or otherwise) or until a non-standard unit, eliminating such interests, has been approved by the Commission.



Scale: 1"=1000'

CERTIFICATION

I hereby certify that the information contained herein is true and complete to the best of my knowledge and belief.

Don H. Morrison

Name

Don H. Morrison

Position

Production Analyst

Company

Tenneco Oil Company

Date

July 13, 1981

I hereby certify that the well location shown on this plat was plotted from field notes of actual surveys made by me or under my supervision, and that the same is true and correct to the best of my knowledge and belief.

Date Surveyed

July 7, 1981
Registered Professional Engineer
and Land Surveyor

Fred B. Kerro
Fred B. Kerro, Jr.

Certificate No.

3950 P. KERR, JR.

