

# OIL CONSERVATION DIVISION

P. O. BOX 2088

SANTA FE, NEW MEXICO 87501

All distances must be from the outer boundaries of the Section.

STATE OF NEW MEXICO

ENERGY AND MINERALS DEPARTMENT

Form C-107  
Revised 10-1-7

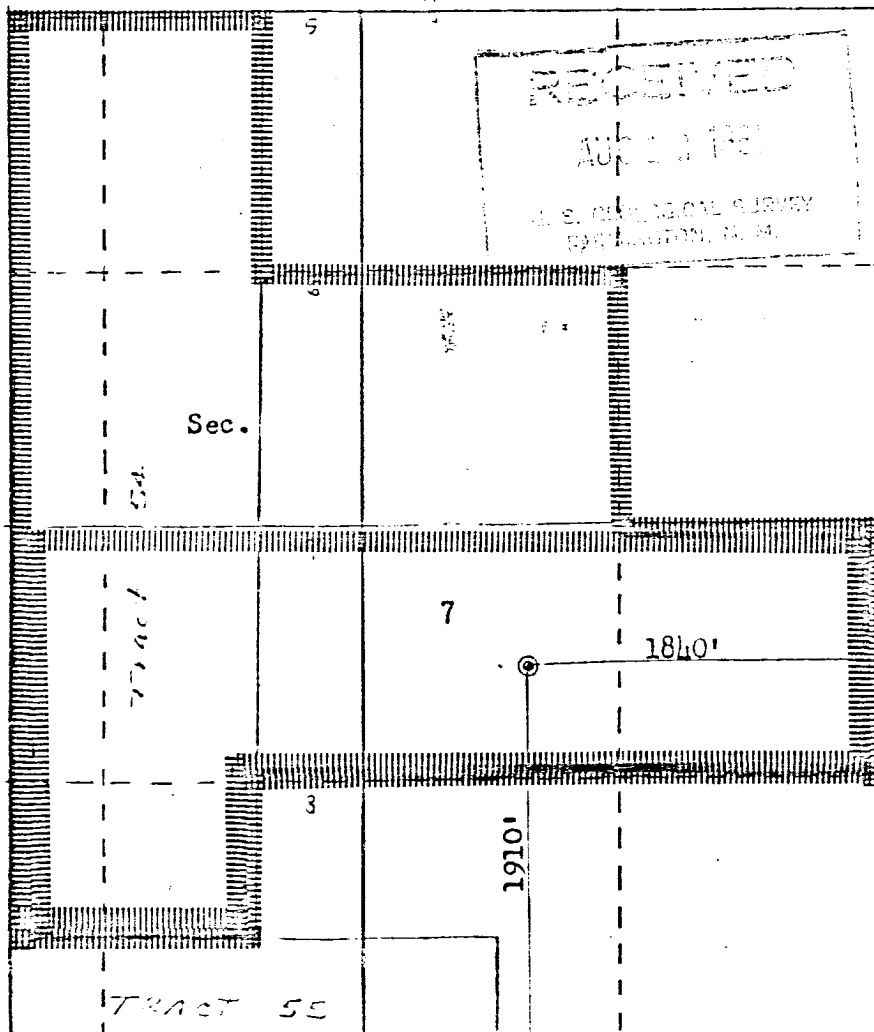
Owner <b>Northwest Pipeline Corporation</b>			Lease <b>San Juan 32-7 Unit Com</b>		Well No. <b>79</b>
Unit Letter <b>J</b>	Section <b>7</b>	Township <b>31N</b>	Range <b>7W</b>	County <b>San Juan</b>	
Actual Footage Location of Well:					
<b>1910</b>	feet from the <b>South</b>	line and	<b>1840</b>	feet from the <b>East</b>	line
Ground Level Elev: <b>6543</b>	Producing Formation <b>Mesaverde / Pictured Cliffs</b>		Pool <b>Undesignated PC</b>		Dedicated Acreage: <b>MV 37/PC 164.56 acres</b>

1. Outline the acreage dedicated to the subject well by colored pencil or hatchure marks on the plat below.
2. If more than one lease is dedicated to the well, outline each and identify the ownership thereof (both as to working interest and royalty).
3. If more than one lease of different ownership is dedicated to the well, have the interests of all owners been consolidated by communitization, unitization, force-pooling, etc?

☐ Yes ☐ No If answer is "yes," type of consolidation \_\_\_\_\_

If answer is "no," list the owners and tract descriptions which have actually been consolidated. (Use reverse side of this form if necessary.) \_\_\_\_\_

No allowable will be assigned to the well until all interests have been consolidated (by communitization, unitization, forced-pooling, or otherwise) or until a non-standard unit, eliminating such interests, has been approved by the Commission.



## CERTIFICATION

I hereby certify that the information contained herein is true and complete to the best of my knowledge and belief.

*Don H. Morrison*

Name

Don H. Morrison

Position

Production Analyst

Company

Tenneco Oil Company

Date

July 13, 1981

I hereby certify that the well location shown on this plat was plotted from field notes of actual surveys made by me or under my supervision, and that the same is true and correct to the best of my knowledge and belief.

Date Surveyed

July 7, 1981

Registered Professional Engineer and Land Surveyor

*Fred B. Kerkner*  
Fred B. Kerkner

Certification