

WELL LOCATION AND ACREAGE DEDICATION PLAT

Supersedes C-128
Effective 1-4-65

All distances must be from the outer boundaries of the Section.

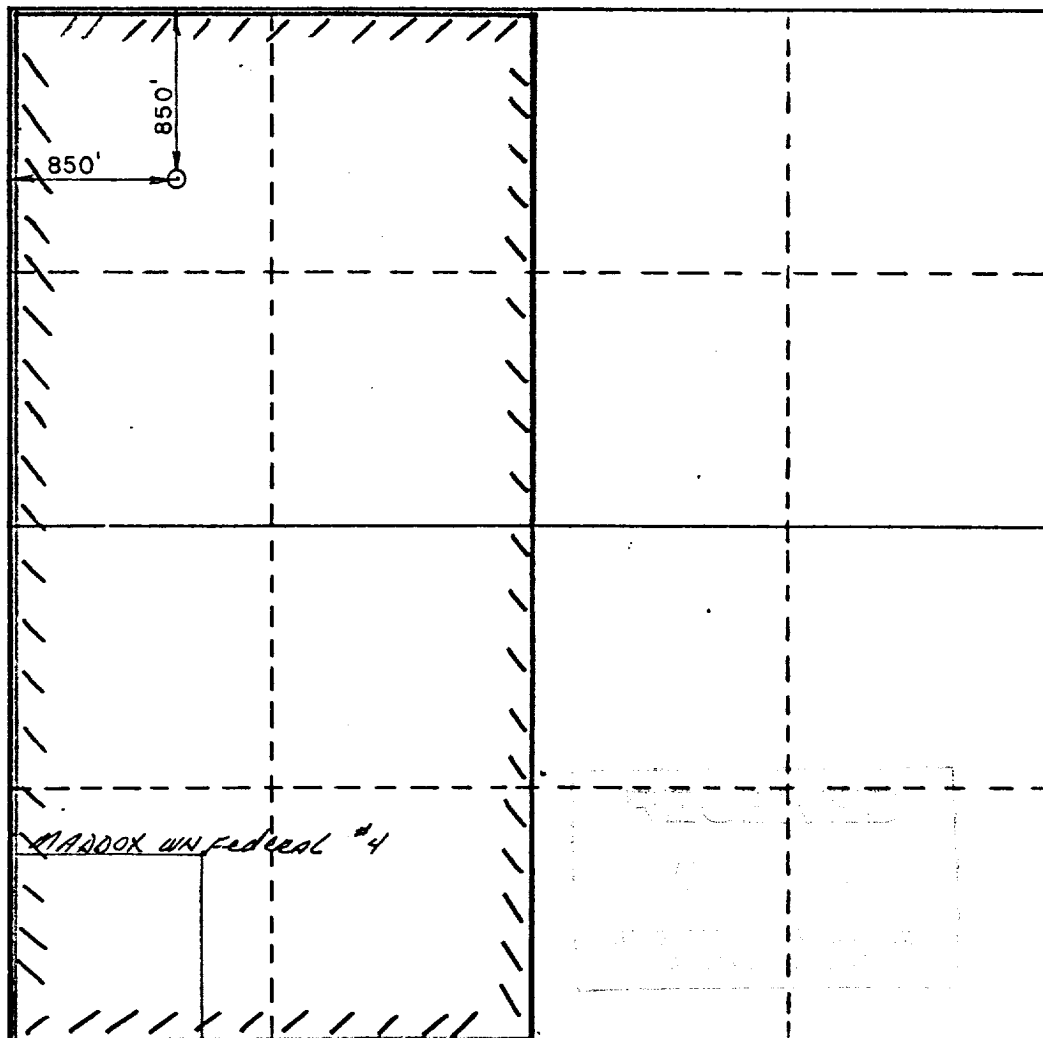
Operator Arco Oil and Gas Company			Lease Maddox WN Federal #42		Well No. 4E
Unit Letter D	Section 24	Township 30N	Range 13 W	County San Juan	
Actual Footage Location of Well: 850 feet from the North line and 850 feet from the West line					
Ground Level Elev. 5809.0	Producing Formation Dakota		Pool Basin	Dedicated Acreage: W320 Acres	

1. Outline the acreage dedicated to the subject well by colored pencil or hachure marks on the plat below.
2. If more than one lease is dedicated to the well, outline each and identify the ownership thereof (both as to working interest and royalty).
3. If more than one lease of different ownership is dedicated to the well, have the interests of all owners been consolidated by communitization, unitization, force-pooling, etc?

☐ Yes ☐ No If answer is "yes," type of consolidation _____

If answer is "no," list the owners and tract descriptions which have actually been consolidated. (Use reverse side of this form if necessary.) _____

No allowable will be assigned to the well until all interests have been consolidated (by communitization, unitization, forced-pooling, or otherwise) or until a non-standard unit, eliminating such interests, has been approved by the Commission.



CERTIFICATION

I hereby certify that the information contained herein is true and complete to the best of my knowledge and belief.

Name
W. A. Walther, Jr.
Position W. A. WALTHER, JR.
Operations Manager
Company ARCO Oil and Gas Co, Div
of Atlantic Richfield Company

Date

I hereby certify that the well location shown on this plat was plotted from field notes of actual surveys made by me or under my supervision, and that the same is true and correct to the best of my knowledge and belief.

Date Surveyed

10-29-80

Registered Professional Engineer
and/or Land Surveyor

Mark A. Elchstadt, P.E.-L.S.

Certificate No.

4933
4933

REGISTERED PROFESSIONAL ENGINEER
AND SURVEYOR