

UNITED STATES
DEPARTMENT OF THE INTERIOR
GEOLOGICAL SURVEY

30-045-25368

APPLICATION FOR PERMIT TO DRILL, DEEPEN, OR PLUG BACK

1a. TYPE OF WORK

DRILL ☒DEEPEN ☐PLUG BACK ☐

b. TYPE OF WELL

OIL
WELL ☐GAS
WELL ☒

OTHER

SINGLE
ZONE ☐MULTIPLE
ZONE ☒

2. NAME OF OPERATOR

Amoco Production Company

3. ADDRESS OF OPERATOR

501 Airport Dr., Farmington, NM 87401

4. LOCATION OF WELL (Report location clearly and in accordance with any State requirements.)*

At surface

1520' FSL x 790' FWL, Section 33, T30N, R12W

At proposed prod. zone

Same

14. DISTANCE IN MILES AND DIRECTION FROM NEAREST TOWN OR POST OFFICE*

1.1 Miles southeast of Farmington, NM

15. DISTANCE FROM PROPOSED*

LOCATION TO NEAREST
PROPERTY OR LEASE LINE, FT.
(Also to nearest drlg. unit line, if any)

790'

16. NO. OF ACRES IN LEASE

40

17. NO. OF ACRES ASSIGNED
TO THIS WELL

160/160

18. DISTANCE FROM PROPOSED LOCATION*

TO NEAREST WELL, DRILLING, COMPLETED,
OR APPLIED FOR, ON THIS LEASE, FT.

700'

19. PROPOSED DEPTH

1850'

20. ROTARY OR CABLE TOOLS

Rotary

21. ELEVATIONS (Show whether DF, RT, GR, etc.)

5702' G.L.

22. APPROX. DATE WORK WILL START*

As soon as permitted.

23. PROPOSED CASING AND CEMENTING PROGRAM

SIZE OF HOLE	SIZE OF CASING	WEIGHT PER FOOT	SETTING DEPTH	QUANTITY OF CEMENT
12-1/4"	9-5/8" (New)	36# (K-55)	300'	300-sx Class "B" w/2% CaCl ₂ -circ Stage 1 - 190-sx Class "B" w/50:50 POZ, 6% gel, 2# med tuf plug/sx, and 0.8% FLA. Tail in w/100 sx Class "B" Neat-circ to surface.
8-3/4"	7" (New)	23# (K-55)	1850'	

Amoco proposes to drill the above well to further develop the Pictured Cliffs and Fruitland reservoirs. The well will be drilled to the surface casing point using native mud. The well will then be drilled to TD with a low solids non-dispersed mud system. Completion design will be based on open hole logs. Copies of all logs will be filed upon completion. Amoco's standard blowout prevention will be employed; see attached drawing for blowout preventer design.

Upon completion the well location will be cleaned and the reserve pit filled and leveled.

Gas produced from this well is not dedicated to a gas sales contract at this time.

IN ABOVE SPACE DESCRIBE PROPOSED PROGRAM: If proposal is to deepen or plug back, give data on present productive zone and proposed new productive zone. If proposal is to drill or deepen directionally, give pertinent data on subsurface locations and measured and true vertical depths. Give blowout preventer program, if any.

24. SIGNED Wayne L. Peterson TITLE District Engineer

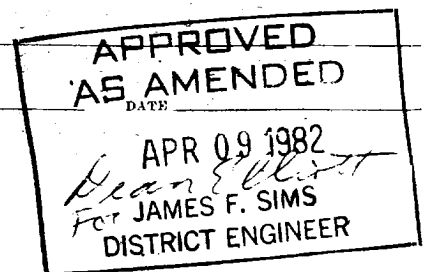
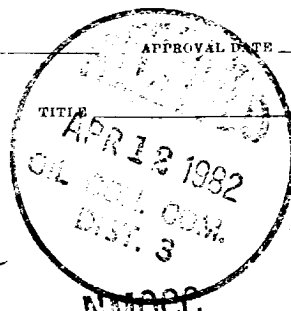
DATE 1-22-82

(This space for Federal or State office use)

PERMIT NO.

APPROVED BY

CONDITIONS OF APPROVAL, IF ANY:



Note
JAB/15C
ch 2

OIL CONSERVATION DIVISION

P. O. BOX 2088

SANTA FE, NEW MEXICO 87501

Form C-107
Revised 10-1-78

STATE OF NEW MEXICO

ENERGY AND MINERALS DEPARTMENT

All distances must be from the outer boundaries of the Section.

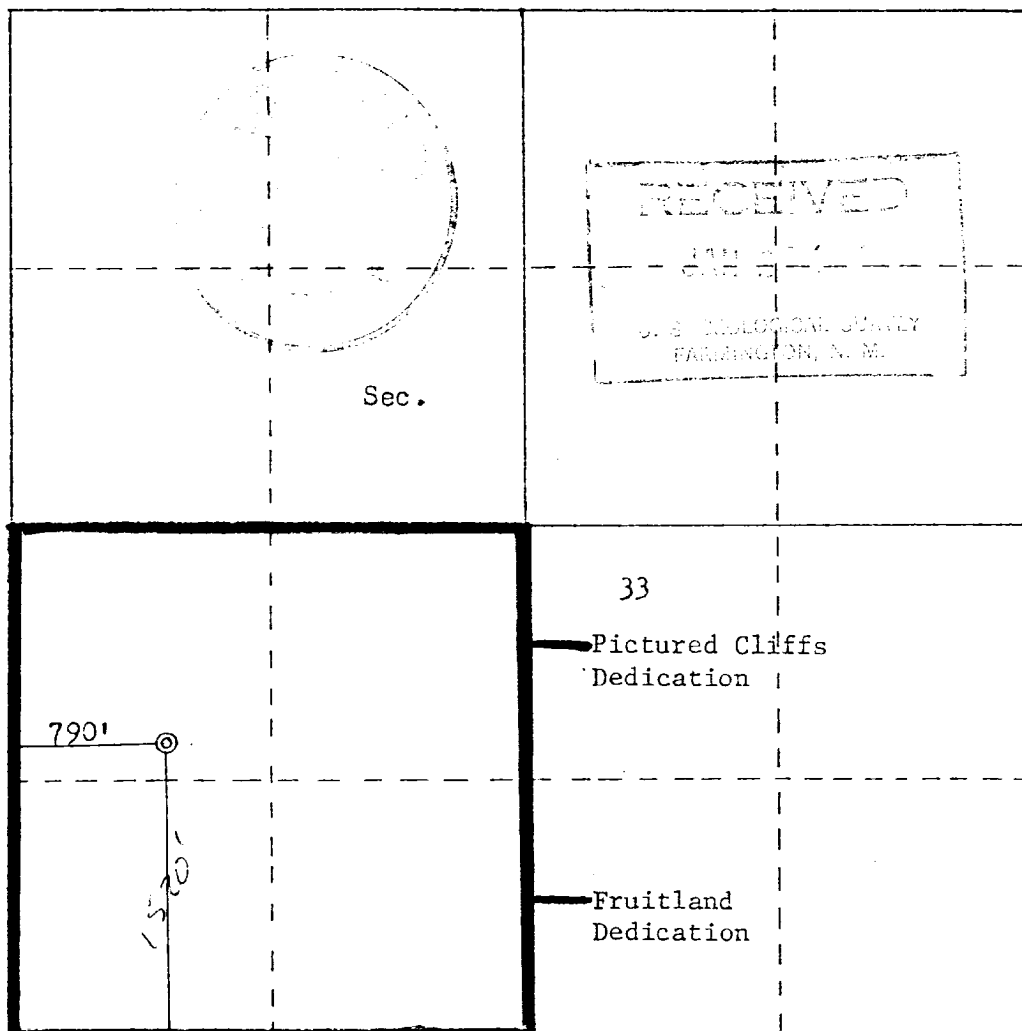
Operator AMOCO PRODUCTION COMPANY			Lease MCCRATH GAS COM "C"		Well No. 1
Unit Letter L	Section 33	Township 30N	Range 12W	County San Juan	
Actual Footage Location of Well:					
1520 feet from the South line and 790 feet from the West line					
Ground Level Elev: 5702	Producing Formation Pictured Cliffs-Fruitland	Pool Fulcher Kutz Pictured Cliffs / Flora Vista Fruitland		Dedicated Acreage: 160/160 Acres	

1. Outline the acreage dedicated to the subject well by colored pencil or hatchure marks on the plat below.
2. If more than one lease is dedicated to the well, outline each and identify the ownership thereof (both as to working interest and royalty).
3. If more than one lease of different ownership is dedicated to the well, have the interests of all owners been consolidated by communitization, unitization, force-pooling, etc?

☒ Yes ☐ No If answer is "yes," type of consolidation Communitization

If answer is "no," list the owners and tract descriptions which have actually been consolidated. (Use reverse side of this form if necessary.) _____

No allowable will be assigned to the well until all interests have been consolidated (by communitization, unitization, forced-pooling, or otherwise) or until a non-standard unit, eliminating such interests, has been approved by the Commission.



Scale: 1"=1000'

CERTIFICATION

I hereby certify that the information contained herein is true and complete to the best of my knowledge and belief.

Wayne L. Peterson

Name

W. L. PETERSON

Position

DISTRICT ENGINEER

Company

AMOCO PRODUCTION COMPANY

Date

1-22-82

I hereby certify that the well location shown on this plat was plotted from field notes of actual surveys made by me or under my supervision, and that the same is true and correct to the best of my knowledge and belief.

Date Surveyed

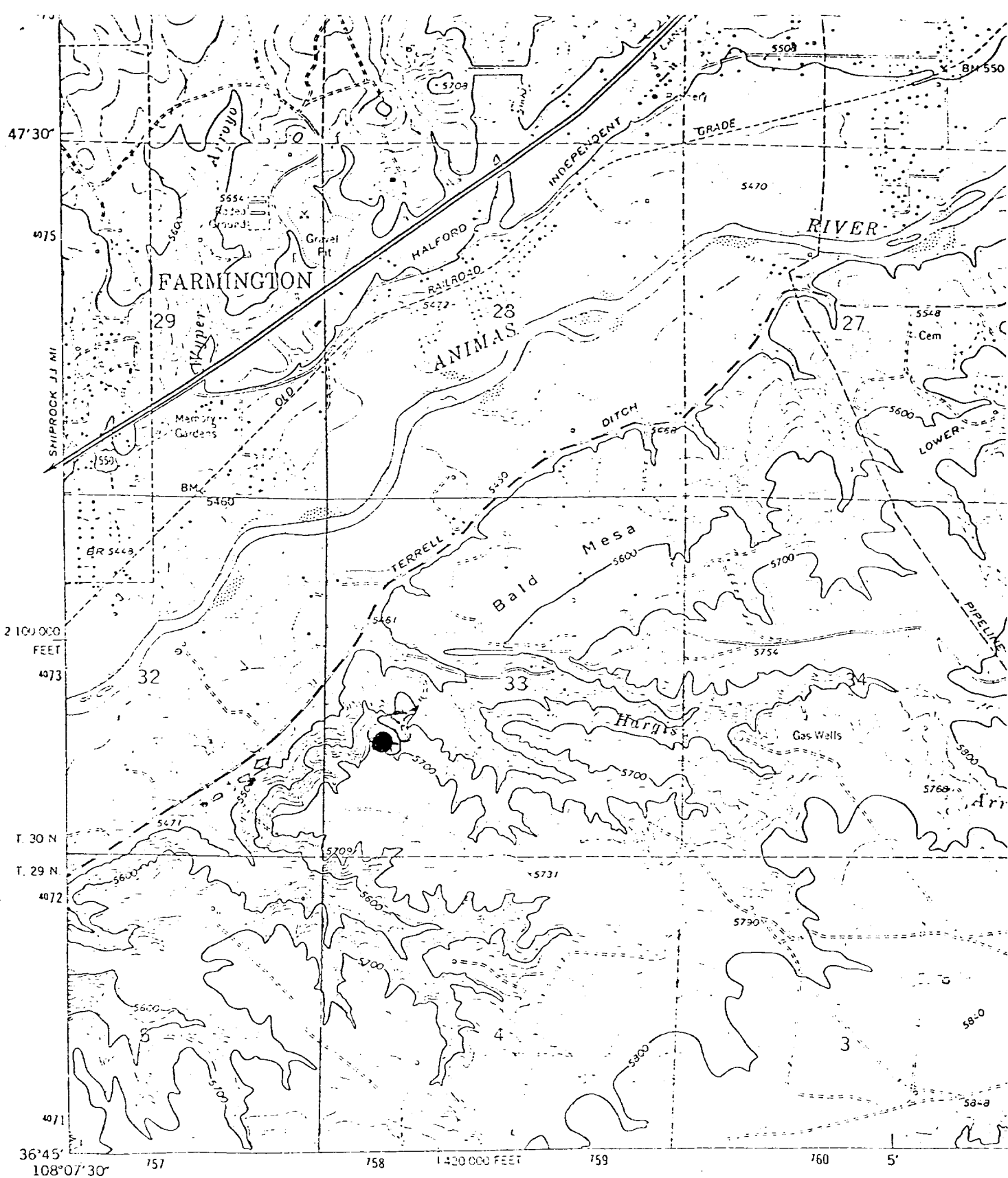
April 15, 1981

Registered Professional Engineer and Land Surveyor

Fred B. Kern
Fred B. Kern

Certificate No. 4522, JR.

3950



Mapped, edited, and published by the Geological Survey

Control by USGS and NOS/NOAA

Topography
taken 1952

Polyconic p
10,000-foot
1000-meter
zone 12, shown in blue

Fine red dashed lines indicate selected fence lines

To place on the predicted North American Datum 1953
move the projection lines 2 meters north and

Vicinity Map for
AMOCO PRODUCTION COMPANY #1 McGRATH GAS COM "C"-"D"
1520' FSL 790' FWL Sec. 33-T30N-R12W
SAN JUAN COUNTY, NEW MEXICO



UTM GRID AND 1973 MAGNETIC NORTH
DECLINATION AT CENTER OF SHEET

SAN JUAN COUNTY
45° 11' N