

Form 9-231 C
(May 1963)SUBMIT IN TRIPLICATE*
(Other instructions on
reverse side)Form approved.
Budget Bureau No. 42-R1425.UNITED STATES
DEPARTMENT OF THE INTERIOR
GEOLOGICAL SURVEY

30-045-25412

APPLICATION FOR PERMIT TO DRILL, DEEPEN, OR PLUG BACK

1a. TYPE OF WORK

DRILL ☒DEEPEN ☐PLUG BACK ☐

b. TYPE OF WELL

OIL
WELL ☐GAS
WELL ☒OTHER ☐SINGLE
ZONE ☐MULTIPLE
ZONE ☐

2. NAME OF OPERATOR

DUGAN PRODUCTION CORP.

3. ADDRESS OF OPERATOR

P O Box 208, Farmington, NM 87401

4. LOCATION OF WELL (Report location clearly and in accordance with any State requirements.*)

At surface

1850' FNL - 940' FWL

At proposed prod. zone

14. DISTANCE IN MILES AND DIRECTION FROM NEAREST TOWN OR POST OFFICE*

4 miles N of Farmington, NM

15. DISTANCE FROM PROPOSED*

LOCATION TO NEAREST

PROPERTY OR LEASE LINE, FT.

(Also to nearest drlg. unit line, if any)

940'

16. NO. OF ACRES IN LEASE

840'

17. NO. OF ACRES ASSIGNED
TO THIS WELL

160

18. DISTANCE FROM PROPOSED LOCATION*

TO NEAREST WELL, DRILLING, COMPLETED,

OR APPLIED FOR, ON THIS LEASE, FT.

19. PROPOSED DEPTH

1400'

20. ROTARY OR CABLE TOOLS

Rotary

21. ELEVATIONS (Show whether DF, RT, GR, etc.)

5662' GL

22. APPROX. DATE WORK WILL START*

ASAP

23.

PROPOSED CASING AND CEMENTING PROGRAM

SIZE OF HOLE	SIZE OF CASING	WEIGHT PER FOOT	SETTING DEPTH	QUANTITY OF CEMENT
9 1/4"	7"	20#	90'	35 sx class "B" neat to surface
5-1/8"	2-7/8"	6.5#	1400'	140 cu.ft. to surface

Plan to drill with spud mud to set surface casing. Will then drill with as little mud and gel as possible, using the slim hole technique, to test the Fruitland Formation. Then will run logs and, if the Fruitland appears productive, will run 2-7/8" casing, selectively perforate, frac, clean out after frac, and complete well.

GAS DEDICATED.



IN ABOVE SPACE DESCRIBE PROPOSED PROGRAM: If proposal is to deepen or plug back, give data on present productive zone and proposed new productive zone. If proposal is to drill or deepen directionally, give pertinent data on subsurface locations and measured and true vertical depths. Give blowout preventer program, if any.

24.

SIGNED

TITLE Landman

DATE 6-15-82

(This space for Federal or State office use)

PERMIT NO.

APPROVAL DATE

APPROVED

ACCEPTED FOR RECORD

APPROVED BY

TITLE

JAMES F. G.

DATE

JUL 06 1982

CONDITIONS OF APPROVAL, IF ANY:

NM 001

JUL 06 1982

JAMES F. G.

DISTRICT ENGINEER

FARMINGTON DISTRICT

STATE OF NEW MEXICO
ENERGY AND MINERALS DEPARTMENT

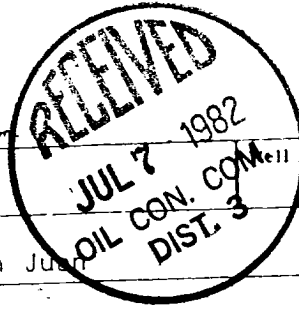
OIL CONSERVATION DIVISION

P. O. BOX 2088

SANTA FE, NEW MEXICO 87501

Form C-102
Revised 10-1-78

All distances must be from the outer boundaries of the Section



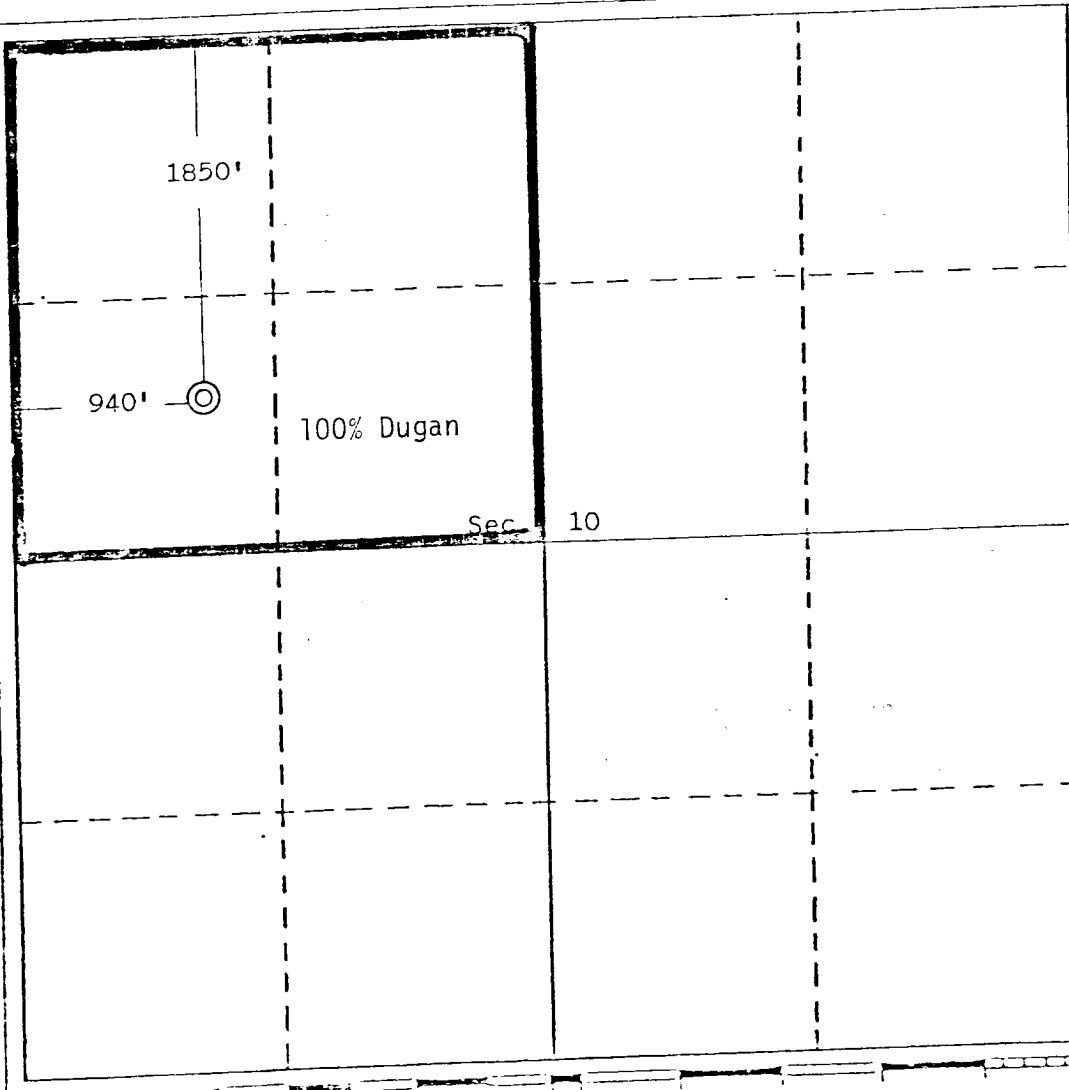
Operator Dugan Production Corporation			Lease Five of Diamonds			Well No. 4
Unit Letter E	Section 10	Township 30 North	Range 13 West	County San Juan		
Actual Footage Location of Well: 1850 feet from the North line and 940 feet from the West line			Dedicated Acreage: 160 Acres			
Ground Level Elev. 5662	Producing Formation Fruitland		Pool Undesignated Fruitland			

1. Outline the acreage dedicated to the subject well by colored pencil or hachure marks on the plat below.
2. If more than one lease is dedicated to the well, outline each and identify the ownership thereof (both as to working interest and royalty).
3. If more than one lease of different ownership is dedicated to the well, have the interests of all owners been consolidated by communitization, unitization, force-pooling, etc?

☐ Yes ☐ No If answer is "yes," type of consolidation _____

If answer is "no," list the owners and tract descriptions which have actually been consolidated. (Use reverse side of this form if necessary.) _____

No allowable will be assigned to the well until all interests have been consolidated (by communitization, unitization, forced-pooling, or otherwise) or until a non-standard unit, eliminating such interests, has been approved by the Division.



CERTIFICATION

I hereby certify that the information contained herein is true and complete to the best of my knowledge and belief.

Jerry McHugh
Name
Jerry McHugh

Position
Landman

Company
Dugan Production Corp.

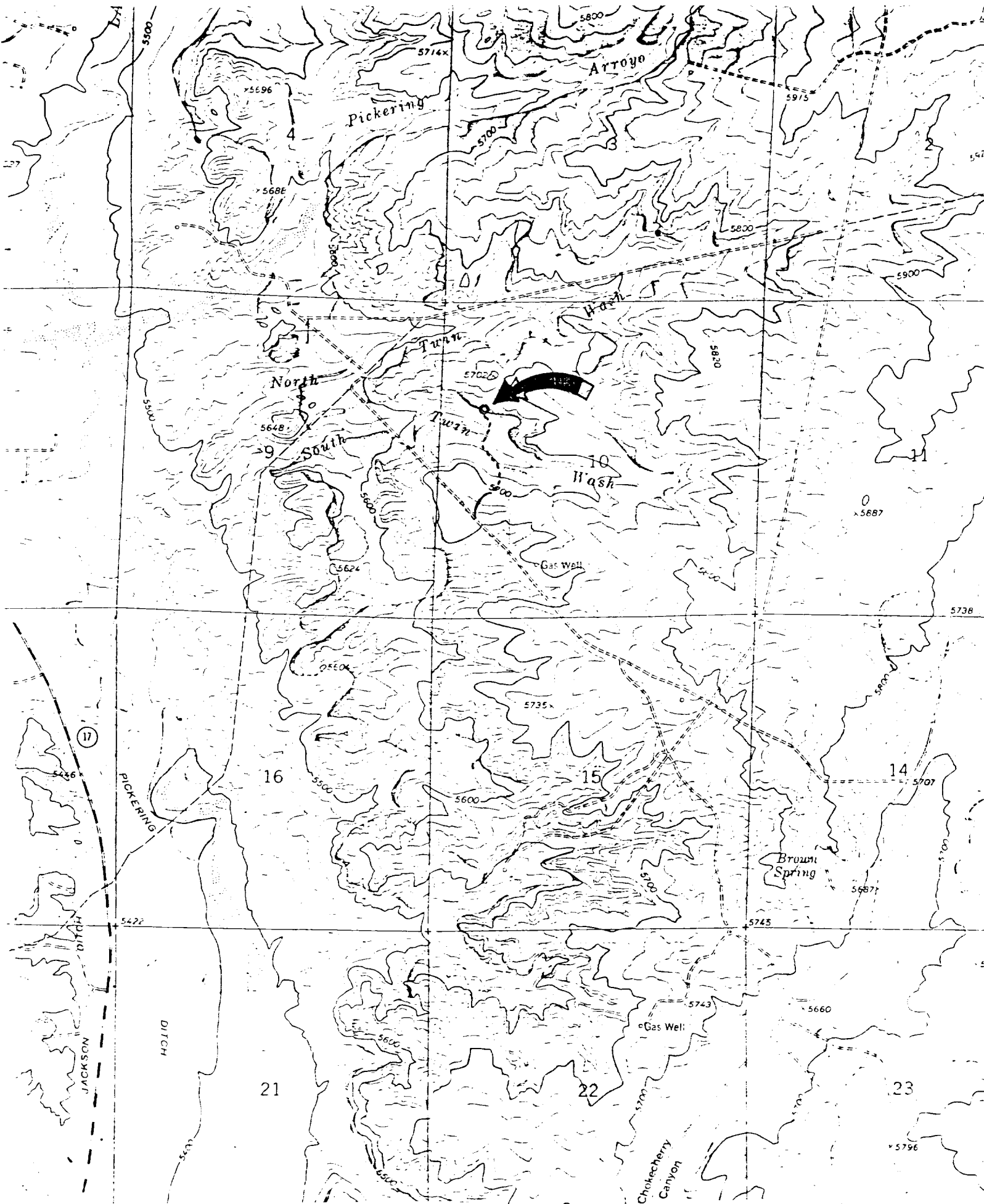
Date
6-15-82

I hereby certify that the location shown on this plat is the location of the well as shown on the survey of _____ and that the same is true and correct to the best of my knowledge and belief.

Date Surveyed
February 3, 1982

Registered Professional Engineer
and/or Land Surveyor

Certificate No. 5979
Edgar L. Risenhoover, L.S.



Existing Road —————
Access Road - - - - -

DUGAN PRODUCTION CORP.
Five of Diamonds #4
Exhibit E