

UNITED STATES
DEPARTMENT OF THE INTERIOR
GEOLOGICAL SURVEY30-045-354241
5. LEASE DESIGNATION AND SERIAL NO.
SF-077754

APPLICATION FOR PERMIT TO DRILL, DEEPEN, OR PLUG BACK

1a. TYPE OF WORK

DRILL ☒DEEPEN ☐PLUG BACK ☐

b. TYPE OF WELL

OIL
WELL ☐GAS
WELL ☒

OTHER

SINGLE
ZONE ☒MULTIPLE
ZONE ☐

2. NAME OF OPERATOR

Curtis J. Little

3. ADDRESS OF OPERATOR

P.O. Box 2487 Farmington, N.M. 87401

4. LOCATION OF WELL (Report location clearly and in accordance with any State requirements.)

At surface
805 FSL and 790 FWL
At proposed prod. zone same

14. DISTANCE, IN MILES AND DIRECTION FROM NEAREST TOWN OR POST OFFICE*

4 miles East of Aztec, NM

15. DISTANCE FROM PROPOSED*

LOCATION TO NEAREST
PROPERTY OR LEASE LINE, FT.
(Also to nearest drlg. unit line, if any)

790'

18. DISTANCE FROM PROPOSED LOCATION*
TO NEAREST WELL, DRILLING COMPLETED,
OR APPLIED FOR, ON THIS LEASE, FT.

350'

16. NO. OF ACRES IN LEASE

320

19. PROPOSED DEPTH

7500' K.B.

17. NO. OF ACRES ASSIGNED
TO THIS WELL

S 320

20. ROTARY OR CABLE TOOLS

Rotary

21. ELEVATIONS (Show whether DF, RT, GR, etc.)

6313 6.4.

22. APPROX. DATE WORK WILL START*

July 25, 1982

23.

PROPOSED CASING AND CEMENTING PROGRAM

SIZE OF HOLE	SIZE OF CASING	WEIGHT PER FOOT	SETTING DEPTH	QUANTITY OF CEMENT
12 1/4"	9 5/8"	32.3#	200'	150 sx - Circulate
8 3/4"	7"	23.0#	3200'	900 sx - Cover Ojo Alamo
6 1/4"	4 1/2"	10.5#	3100' / 5500'	
		11.5#	5500' / 7500'	

Propose to drill with mud to 3200', change to gas drilling to T.D., run mechanical logs, selectively test, perforate and sandwater fracture the Dakota formation. A 10" 3000 psi W.P. and 6000 psi test BOP with blind and pipe rams will be used for blowout prevention.

The gas is undedicated.

The South 1/2 of Section 8 is dedicated to the Dakota.

IN ABOVE SPACE DESCRIBE PROPOSED PROGRAM: If proposal is to deepen or plug back, give data on present productive zone and proposed new productive zone. If proposal is to drill or deepen directionally, give pertinent data on subsurface locations and measured and true vertical depths. Give blowout prevention program, if any.

24.

SIGNED

Curtis J. Little

TITLE

Operator

DATE

7-12-1982

(This space for Federal or State office use)

PERMIT NO.

APPROVAL DATE

APPROVED BY

TITLE

CONDITIONS OF APPROVAL, IF ANY:

DATE

JUL 29 1982

Eric B. Blecher
for JAMES F. SING
DISTRICT ENGINEER

OIL CONSERVATION DIVISION

STATE OF NEW MEXICO
ENERGY AND MINERALS DEPARTMENTP. O. BOX 2088
SANTA FE, NEW MEXICO 87501Form C-102
Revised 10-1-78

All distances must be from the outer boundaries of the Section.

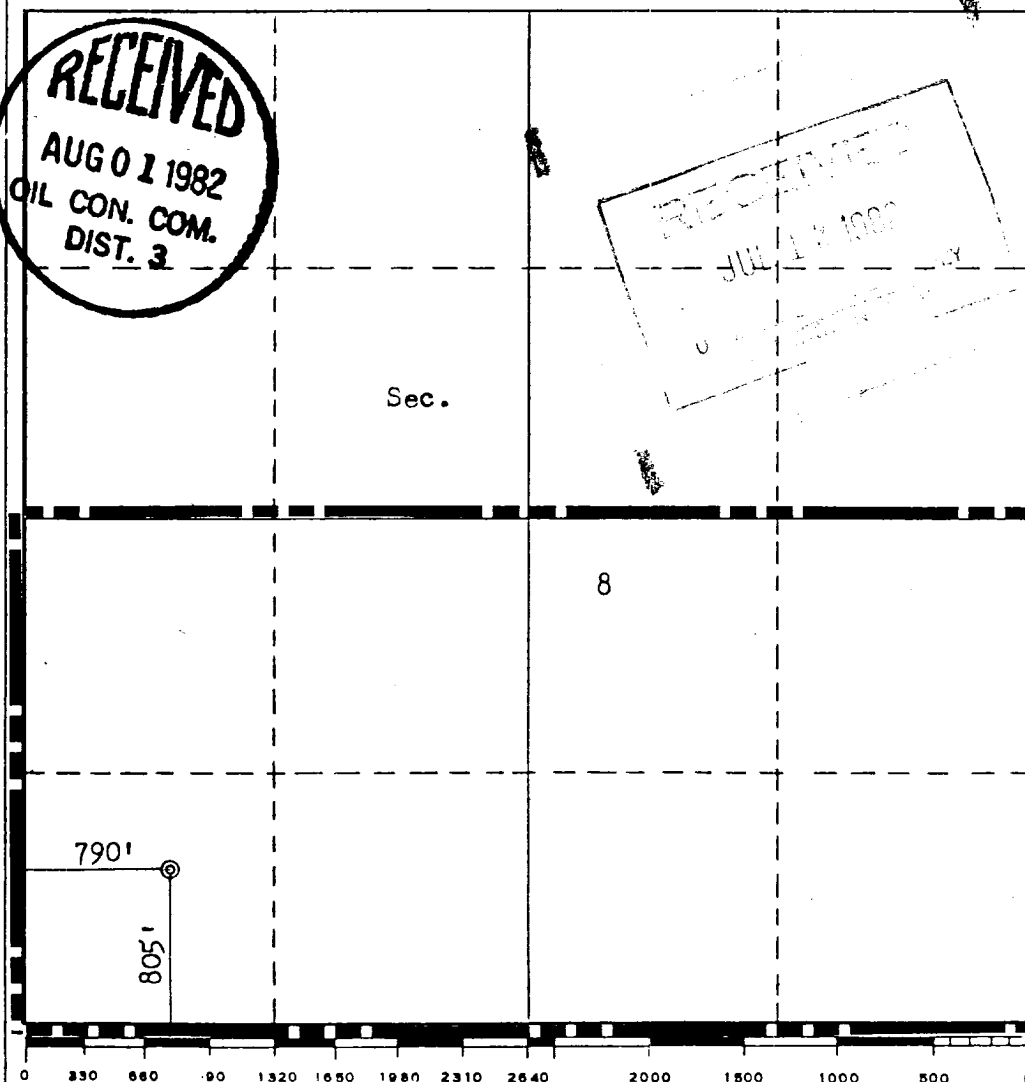
Operator CURTIS J. LITTLE		Lease KELLY-FEDERAL		Well No. 1	
Unit Letter M	Section 8	Township 30N	Range 10W	County San Juan	
Actual Footage Location of Well: 805 feet from the South line and 790 feet from the West line					
Ground Level Elev. 6313	Producing Formation Dakota		Pool Basin Dakota	Dedicated Acreage: .5 320 Acres	

1. Outline the acreage dedicated to the subject well by colored pencil or hachure marks on the plat below.
2. If more than one lease is dedicated to the well, outline each and identify the ownership thereof (both as to working interest and royalty).
3. If more than one lease of different ownership is dedicated to the well, have the interests of all owners been consolidated by communitization, unitization, force-pooling, etc?

☐ Yes ☐ No If answer is "yes," type of consolidation _____

If answer is "no," list the owners and tract descriptions which have actually been consolidated. (Use reverse side of this form if necessary.) _____

No allowable will be assigned to the well until all interests have been consolidated (by communitization, unitization, forced-pooling, or otherwise) or until a non-standard unit, eliminating such interests, has been approved by the Commission.



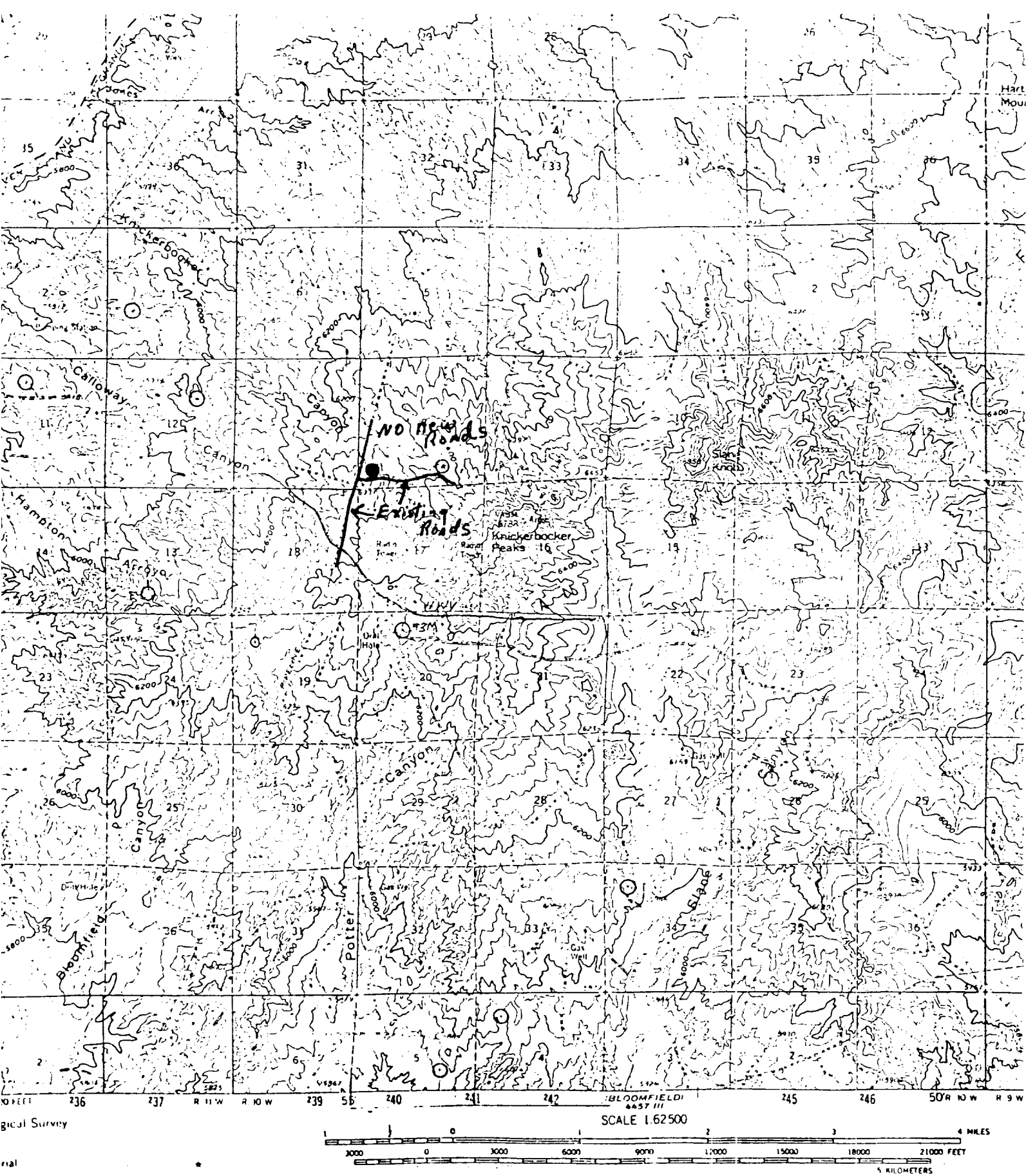
CERTIFICATION

I hereby certify that the information contained herein is true and complete to the best of my knowledge and belief.

Name
CURTIS J. LITTLE
Position
Operator
Company
CURTIS J. LITTLE
Date
8 July 1982

I hereby certify that the well location shown on this plat was plotted from field notes of actual surveys made by me or under my supervision, and that the same is true and correct to the best of my knowledge and belief.

Date Surveyed
July 6, 1982
Registered Professional Engineer
and/or Land Surveyor
Fred B. Kerr Jr.
Certificate No.
3950



Vicinity Map for
 CURTIS J. LITTLE #1 KELLY-FEDERAL
 805'FSL 790'FWL Sec. 8-T30N-R10W
 SAN JUAN COUNTY, NEW MEXICO