

UNITED STATES
DEPARTMENT OF THE INTERIOR
GEOLOGICAL SURVEY

30-095-25431

APPLICATION FOR PERMIT TO DRILL, DEEPEN, OR PLUG BACK

1a. TYPE OF WORK

DRILL ☒DEEPEN ☐PLUG BACK ☐

b. TYPE OF WELL

OIL
WELL ☐GAS
WELL ☒

OTHER

SINGLE
ZONE ☒MULTIPLE
ZONE ☐

2. NAME OF OPERATOR

DUGAN PRODUCTION CORP.

3. ADDRESS OF OPERATOR

P O Box 208, Farmington, NM 87401

4. LOCATION OF WELL (Report location clearly and in accordance with any State requirements.*)

At surface

790' FNL - 790' FWL

At proposed prod. zone

14. DISTANCE IN MILES AND DIRECTION FROM NEAREST TOWN OR POST OFFICE*

4 miles North of Kirtland, NM

15. DISTANCE FROM PROPOSED*

LOCATION TO NEAREST
PROPERTY OR LEASE LINE, FT.
(Also to nearest drlg. unit line, if any)

790'

16. NO. OF ACRES IN LEASE

1840

17. NO. OF ACRES ASSIGNED
TO THIS WELL

N 320

18. DISTANCE FROM PROPOSED LOCATION*
TO NEAREST WELL, DRILLING, COMPLETED,
OR APPLIED FOR, ON THIS LEASE, FT.

1/4 mile

19. PROPOSED DEPTH

5850'

20. ROTARY OR CABLE TOOLS

Rotary

21. ELEVATIONS (Show whether DF, RT, GR, etc.)

5498' GL

22. APPROX. DATE WORK WILL START*

ASAP

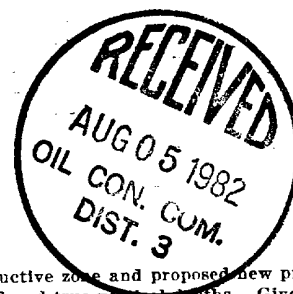
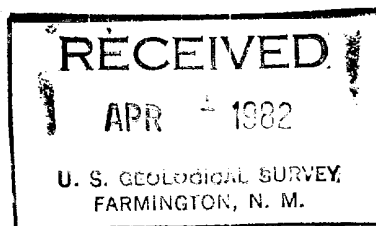
23.

PROPOSED CASING AND CEMENTING PROGRAM

SIZE OF HOLE	SIZE OF CASING	WEIGHT PER FOOT	SETTING DEPTH	QUANTITY OF CEMENT
12 1/4"	8-5/8"	24#	200'	135 sx to surface
7-7/8"	4 1/2"	11.6 & 10.5#	5850'	1320 cu.ft. in 2 stages to surface

Plan to drill with spud mud to 200' to set surface casing; then will drill to total depth with gel-water-mud mixutre to test the Dakota Formation. Plan to run IES and CDL logs. If the well appears productive, will run 4 1/2" casing, selectively perforate, frac, clean out after frac, and complete well using 1 1/2" or 1 1/4" tubing.

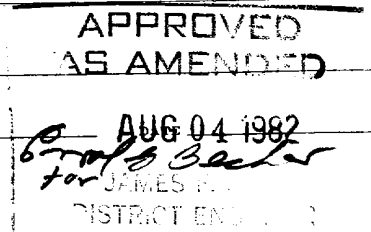
GAS NOT DEDICATED.



IN ABOVE SPACE DESCRIBE PROPOSED PROGRAM: If proposal is to deepen or plug back, give data on present productive zone and proposed new productive zone. If proposal is to drill or deepen directionally, give pertinent data on subsurface locations and measured and true vertical depths. Give blowout preventer program, if any.

24. Jerry McHugh Landman 3-26-82
SIGNED _____ TITLE _____ DATE _____
(This space for Federal or State office use)

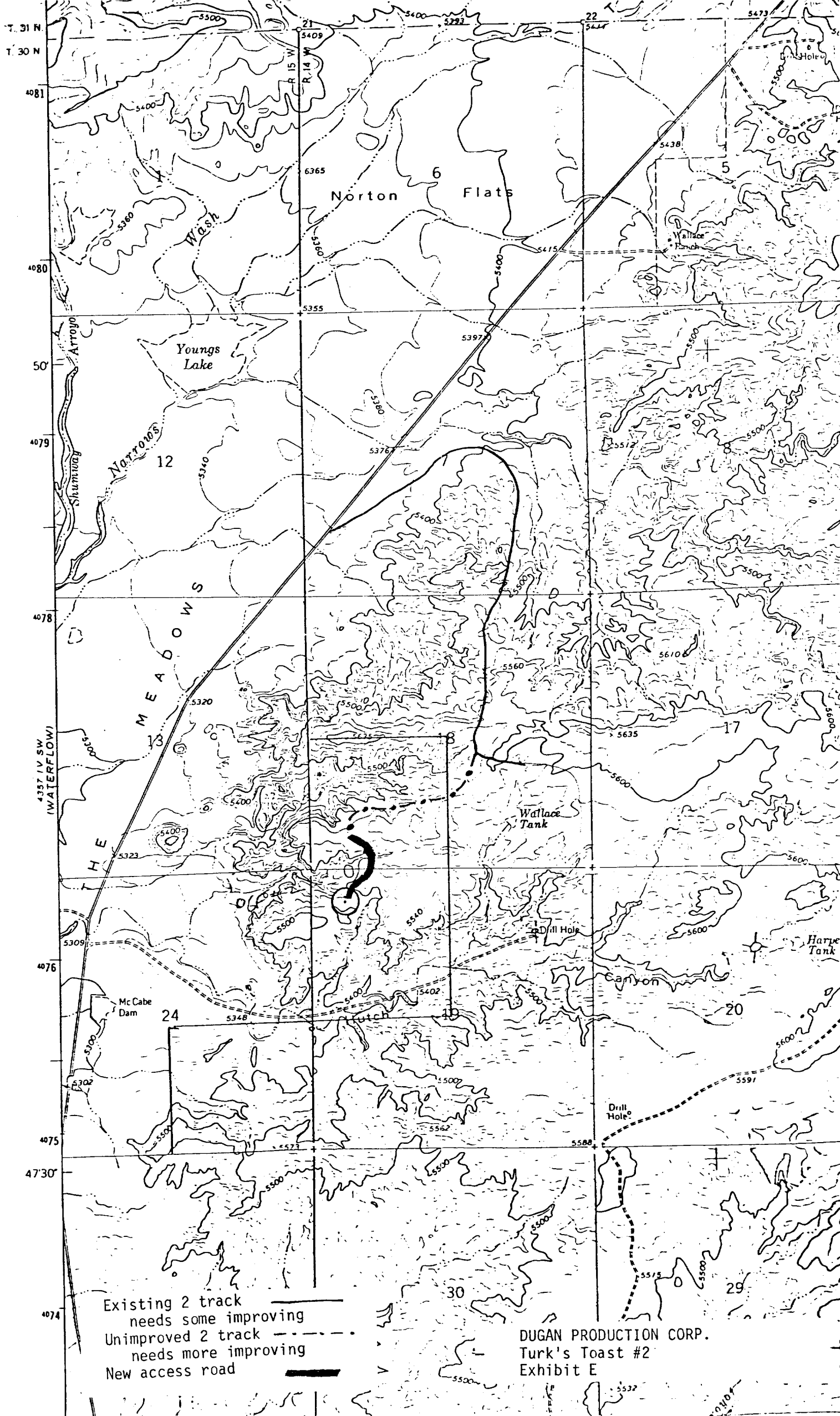
PERMIT NO. _____ APPROVAL DATE _____

APPROVED BY _____ TITLE _____
CONDITIONS OF APPROVAL, IF ANY:

NMOC

Form C-102
Revised 10-1-78

Edgar L. Risenheaver
Certificate No. 5979
Edgar L. Risenheaver, U.S.



Existing 2 track
needs some improving
Unimproved 2 track
needs more improving
New access road

DUGAN PRODUCTION CORP.
Turk's Toast #2
Exhibit E