

UNITED STATES
DEPARTMENT OF THE INTERIOR
GEOLOGICAL SURVEY

APPLICATION FOR PERMIT TO DRILL, DEEPEN, OR PLUG BACK

1a. TYPE OF WORK
DRILL ☒ DEEPEN ☐ PLUG BACK ☐

b. TYPE OF WELL
OIL WELL ☐ GAS WELL ☒ OTHER ☐
SINGLE ZONE ☐ MULTIPLE ZONE ☐

2. NAME OF OPERATOR
DUGAN PRODUCTION CORP.

3. ADDRESS OF OPERATOR
P O Box 208, Farmington, NM 87401

4. LOCATION OF WELL (Report location clearly and in accordance with any State requirements.)
At surface 1850' FSL - 1650' FWL

At proposed prod. zone

14. DISTANCE IN MILES AND DIRECTION FROM NEAREST TOWN OR POST OFFICE*

4 miles north of Farmington, NM

15. DISTANCE FROM PROPOSED LOCATION TO NEAREST PROPERTY OR LEASE LINE, FT.
(Also to nearest drig. unit line, if any)
990'

18. DISTANCE FROM PROPOSED LOCATION TO NEAREST WELL, DRILLING, COMPLETED, OR APPLIED FOR, ON THIS LEASE, FT.
200'

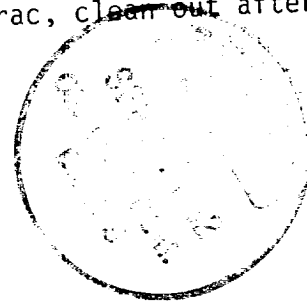
21. ELEVATIONS (Show whether DF, RT, GR, etc.)
5708' GL; 5720' RKB

23. PROPOSED CASING AND CEMENTING PROGRAM

SIZE OF HOLE	SIZE OF CASING	WEIGHT PER FOOT	SETTING DEPTH	QUANTITY OF CEMENT
12-1/4"	8-5/8"	24#	200'	135 sx
7-7/8"	4-1/2"	11.6 & 10.5	6500'	1850 cu.ft. slurry

Plan to drill with spud mud to set 200' of surface casing. Will drill with a mixture of mud-water-gel to approximately 6500' to test the Basin Dakota Formation. Will run logs and then set 4 1/2" casing, selectively perforate, frac, clean out after frac and complete well.

GAS DEDICATED



IN ABOVE SPACE DESCRIBE PROPOSED PROGRAM: If proposal is to deepen or plug back, give data on present productive zone and proposed new productive zone. If proposal is to drill or deepen directionally, give pertinent data on subsurface locations and measured and true vertical depths. Give blowout preventer program, if any.

24. SIGNED Jerry McHugh TITLE Landman DATE 8-27-82

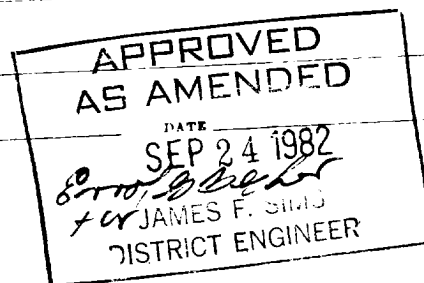
(This space for Federal or State office use)

PERMIT NO.

APPROVAL DATE

APPROVED BY
CONDITIONS OF APPROVAL, IF ANY:

TITLE



OIL CONSERVATION DIVISION

P. O. BOX 2088

SANTA FE, NEW MEXICO 87501

Form C-102
Revised 10-1-78

STATE OF NEW MEXICO
ENERGY AND MINERALS DEPARTMENT

All distances must be from the outer boundaries of the Section.

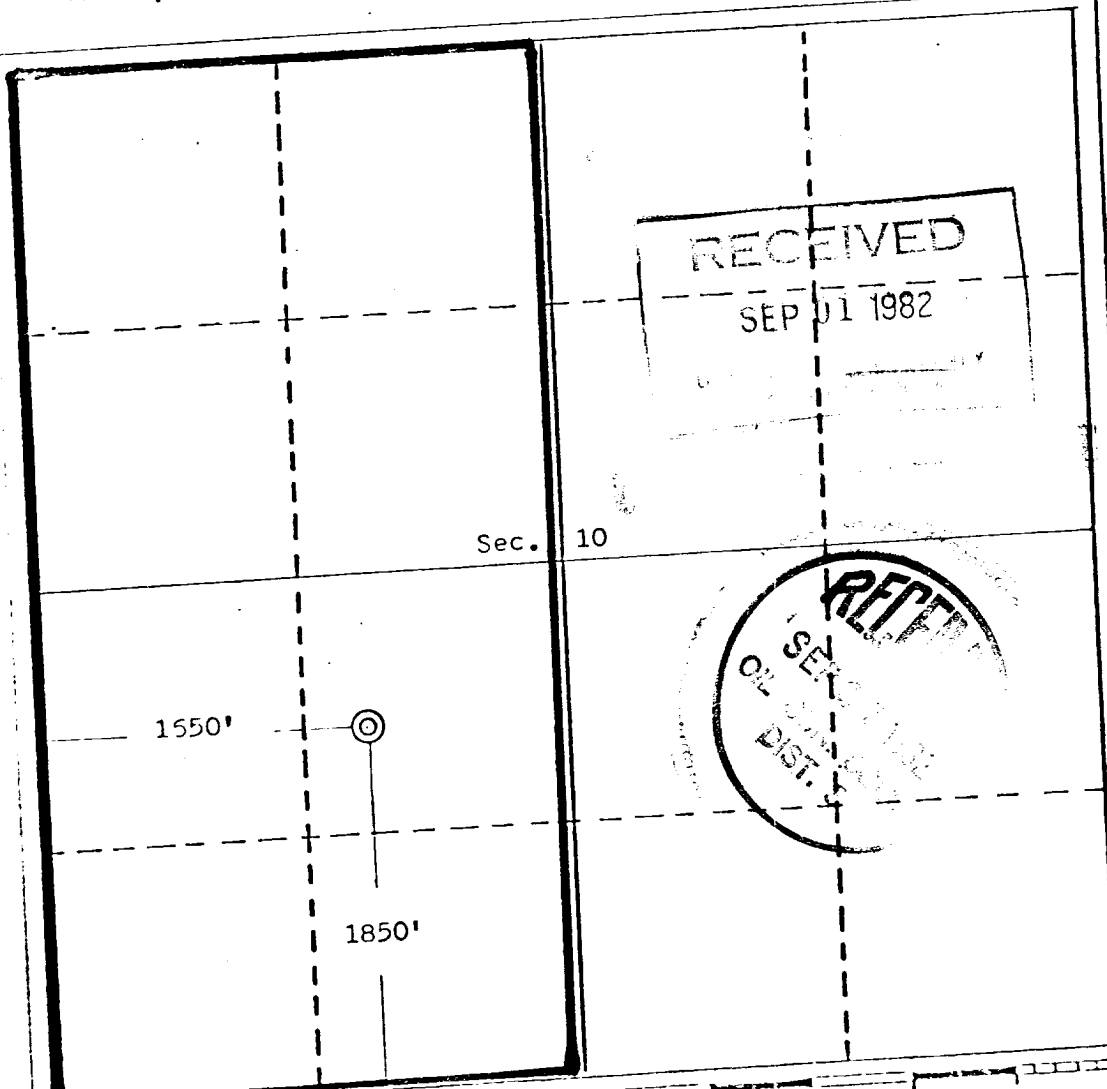
Operator Dugan Production Corporation			Lease Mexico Federal L		Well No. 1-R
Unit Letter K	Section 10	Township 30 North	Range 13 West	County San Juan	
Actual Footage Location of Well:					
1850	feet from the	South	line and	1650	feet from the
				West	line
Ground Level Elev. 5708			Producing Formation Dakota		Pool Basin Dakota
					Dedicated Acreage: W 320
					Acre 320

1. Outline the acreage dedicated to the subject well by colored pencil or hatchure marks on the plat below.
2. If more than one lease is dedicated to the well, outline each and identify the ownership thereof (both as to working interest and royalty).
3. If more than one lease of different ownership is dedicated to the well, have the interests of all owners been consolidated by communitization, unitization, force-pooling, etc?

☐ Yes ☐ No If answer is "yes," type of consolidation _____

If answer is "no," list the owners and tract descriptions which have actually been consolidated. (Use reverse side of this form if necessary.) _____

No allowable will be assigned to the well until all interests have been consolidated (by communitization, unitization, forced-pooling, or otherwise) or until a non-standard unit, eliminating such interests, has been approved by the Division.



CERTIFICATION

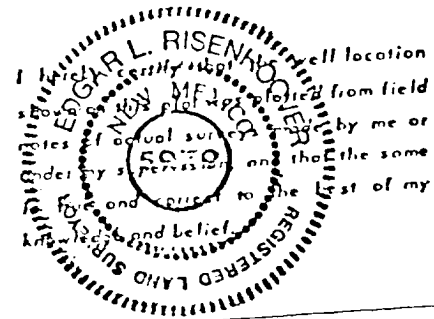
I hereby certify that the information contained herein is true and complete to the best of my knowledge and belief.

Jerry McHugh
Name **Jerry McHugh**

Position
Landman

Company
Dugan Production Corp.

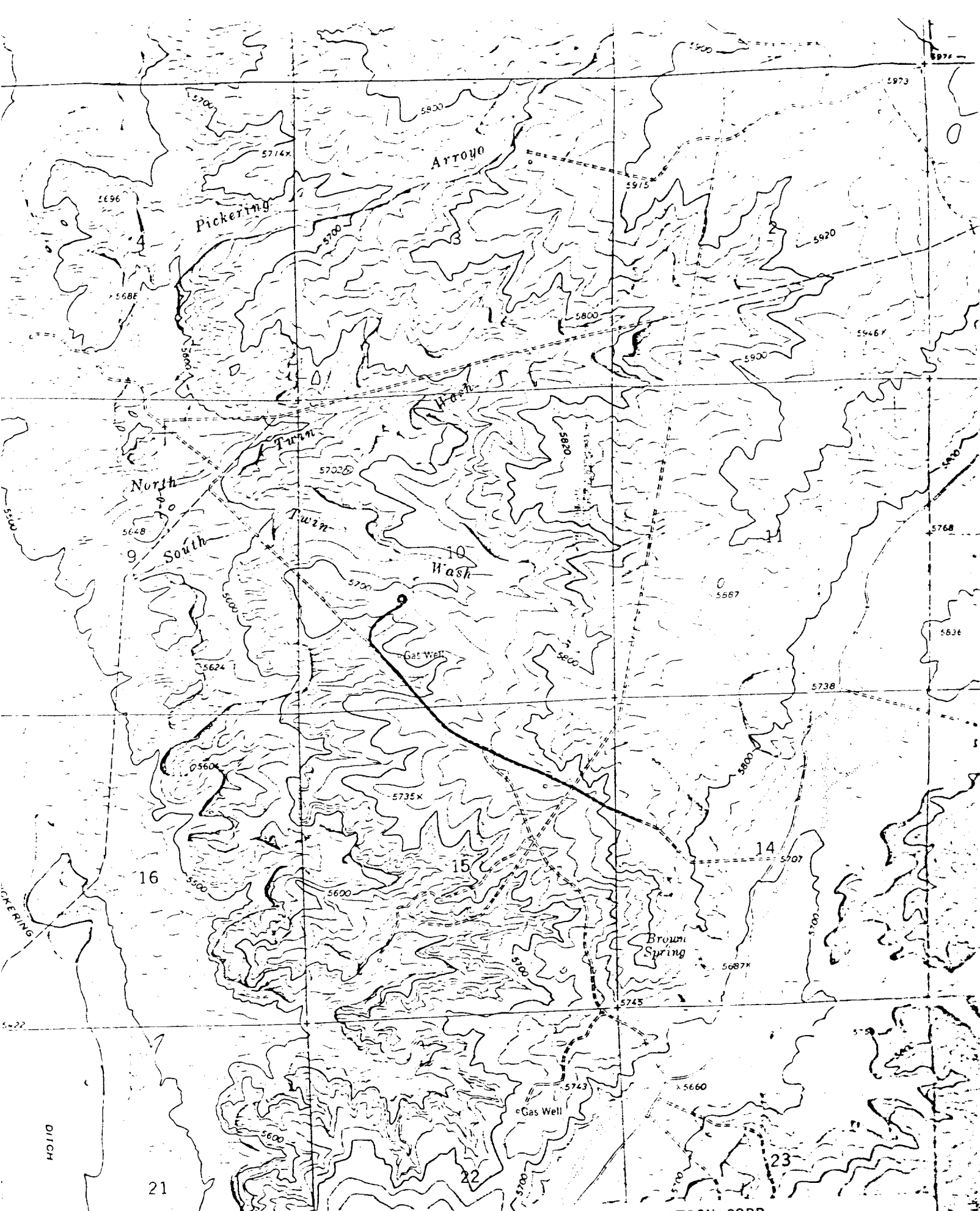
Date
8-27-82



Date Surveyed
February 3, 1982

Registered Professional Engineer
and/or Land Surveyor

Edgar L. Risenhoover
Certificate No. **5979**
Edgar L. Risenhoover, L.S.



Existing Road

Access Road

NONE

DUGAN PRODUCTION CORP.
Mexico Federal L #1R
Exhibit E