

30-045-25659

UNITED STATES
DEPARTMENT OF THE INTERIOR
GEOLOGICAL SURVEY

APPLICATION FOR PERMIT TO DRILL, DEEPEN, OR PLUG BACK

1a. TYPE OF WORK

DRILL ☒DEEPEN ☐PLUG BACK ☐

b. TYPE OF WELL

OIL
WELL ☐GAS
WELL ☒OTHER ☐SINGLE
ZONE ☒MULTIPLE
ZONE ☐

2. NAME OF OPERATOR

Amoco Production Company

3. ADDRESS OF OPERATOR

501 Airport Drive, Farmington, NM 87401

4. LOCATION OF WELL (Report location clearly and in accordance with any State requirements.)

At surface 790' FNL x 880' FWL

At proposed prod. zone Same

14. DISTANCE IN MILES AND DIRECTION FROM NEAREST TOWN OR POST OFFICE*

Approximately 3.4 miles northeast of Bland, New Mexico

15. DISTANCE FROM PROPOSED*

LOCATION TO NEAREST
PROPERTY OR LEASE LINE, FT.
(Also to nearest drlg. unit line, if any)

790'

18. DISTANCE FROM PROPOSED LOCATION*

TO NEAREST WELL, DRILLING, COMPLETED,
OR APPLIED FOR, ON THIS LEASE, FT.

3621'

16. NO. OF ACRES IN LEASE

2444.41

17. NO. OF ACRES ASSIGNED
TO THIS WELL

308.56

19. PROPOSED DEPTH

7140'

20. ROTARY OR CABLE TOOLS

Rotary

21. ELEVATIONS (Show whether DF, RT, GR, etc.)

5967' GL

22. APPROX. DATE WORK WILL START*

As soon as permitted

23. "GENERAL REQUIREMENTS"
PROPOSED CASING AND CEMENTING PROGRAMThis action is subject to administrative
appeal pursuant to 30 CFR 290.

SIZE OF HOLE	SIZE OF CASING	WEIGHT PER FOOT	SETTING DEPTH
12-1/4"	9-5/8"	32.3# K-55	300'
8-3/4"	7"	20# K-55	2975'
6-1/4"	4-1/2" Liner	10.5# K-55	7140'

350 cu. ft. Class B w/2% CaCl₂ Circ.
490 cu. ft. Class B 50:50 POZ w/6%
gel, and .8% FLA. Tail in w/75 cu.
ft. Class "B" neat - Circ. 4-1/2"
Liner will be cemented with 500 cu.
ft. of 50:50 POZ 6% gel and 0.8% FLA.
Tail in w/120 cu. ft. Class "B" neat.

Amoco proposes to drill the above well to further develop the Basin Dakota reservoir. The well will be drilled to the surface casing point using native mud. The well will then be drilled to the intermediate casing point TD with a low solids non-dispersed mud system. The intermediate shoe will be drilled to TD with gas. Completion design will be based on open hole logs. Copy of all logs will be filed upon completion. Amoco's standard blowout prevention will be employed; see attached drawing for blowout preventer design.

Gas produced from this well is dedicated to El Paso Natural Gas under Contract No. 56742.

IN ABOVE SPACE DESCRIBE PROPOSED PROGRAM: If proposal is to deepen or plug back, give data on present productive zone and proposed new productive zone. If proposal is to drill or deepen directionally, give pertinent data on subsurface locations and measured and true vertical depths. Give blowout preventer program, if any.

24.

SIGNED

TITLE

District Engineer

DATE

2-3-83

(This space for Federal or State office use)

PERMIT NO.

APPROVAL DATE

APPROVED BY

TITLE

CONDITIONS OF APPROVAL, IF ANY:

WU R2046

ch2

NMOC

APPROVED
AS AMENDED

DATE

MAR 28 1983

JAMES F. SIMS
DISTRICT ENGINEER

NEW MEXICO OIL CONSERVATION COMMISSION
WELL LOCATION AND ACREAGE DEDICATION PLAT

Form C-102
Supersedes C-128
Effective 1-1-65

All distances must be from the outer boundaries of the Section.

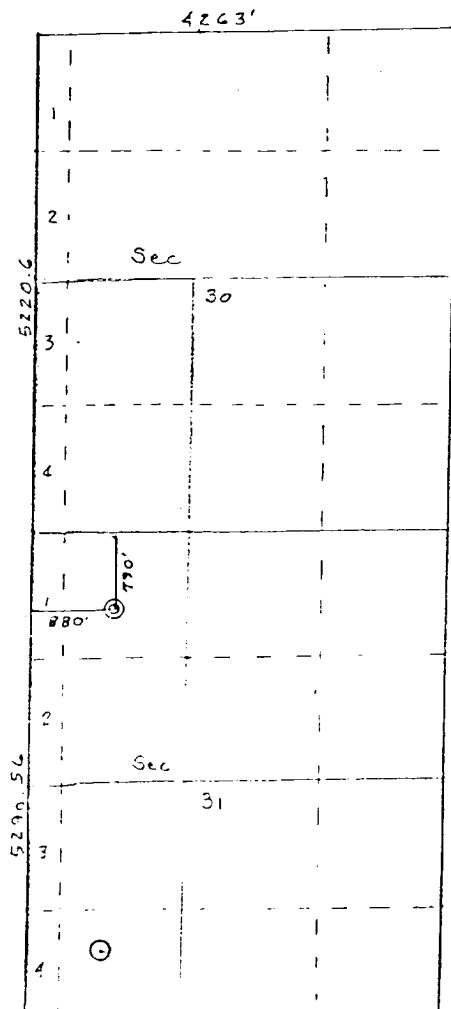
Operator AMOCO PRODUCTION COMPANY			Lease HEATH GAS COM "P"		Well No. 1E
Unit Letter C	Section 31	Township 30N	Range 4W	County San Juan	
Actual Footage Location of Well: 790 feet from the North line and 880 feet from the West line					
Ground Level Elev: 5967	Producing Formation Dakota		Pool Basin Dakota		Dedicated Acreage: 308.56 Acres

- Outline the acreage dedicated to the subject well by colored pencil or hachure marks on the plat below.
- If more than one lease is dedicated to the well, outline each and identify the ownership thereof (both as to working interest and royalty).
- If more than one lease of different ownership is dedicated to the well, have the interests of all owners been consolidated by communitization, unitization, force-pooling, etc?

☒ Yes ☐ No If answer is "yes," type of consolidation Communitization

If answer is "no," list the owners and tract descriptions which have actually been consolidated. (Use reverse side of this form if necessary.)

No allowable will be assigned to the well until all interests have been consolidated (by communitization, unitization, forced-pooling, or otherwise) or until a non-standard unit, eliminating such interests, has been approved by the Commission.



RECEIVED
FEB 16 1983
U.S. GEOLOGICAL SURVEY
WASHINGTON, D. C.

RECEIVED
HARTMAN
OIL COMPANY

Scale: 1"=2000'

CERTIFICATION

I hereby certify that the information contained herein is true and complete to the best of my knowledge and belief.

Dale H. Shoemaker

Name
D. H. SHOEMAKER
Position
DISTRICT ENGINEER
Company
AMOCO PRODUCTION COMPANY
Date
JANUARY 11, 1983

I hereby certify that the well location shown on this plat was plotted from field notes of actual surveys made by me or under my supervision, and that the same is true and correct to the best of my knowledge and belief.

Date Surveyed
December 20, 1982
Registered Professional Engineer and Land Surveyor
Fred B. Kerr Jr.
Fred B. Kerr Jr.