

All distances must be from the outer boundaries of the Section

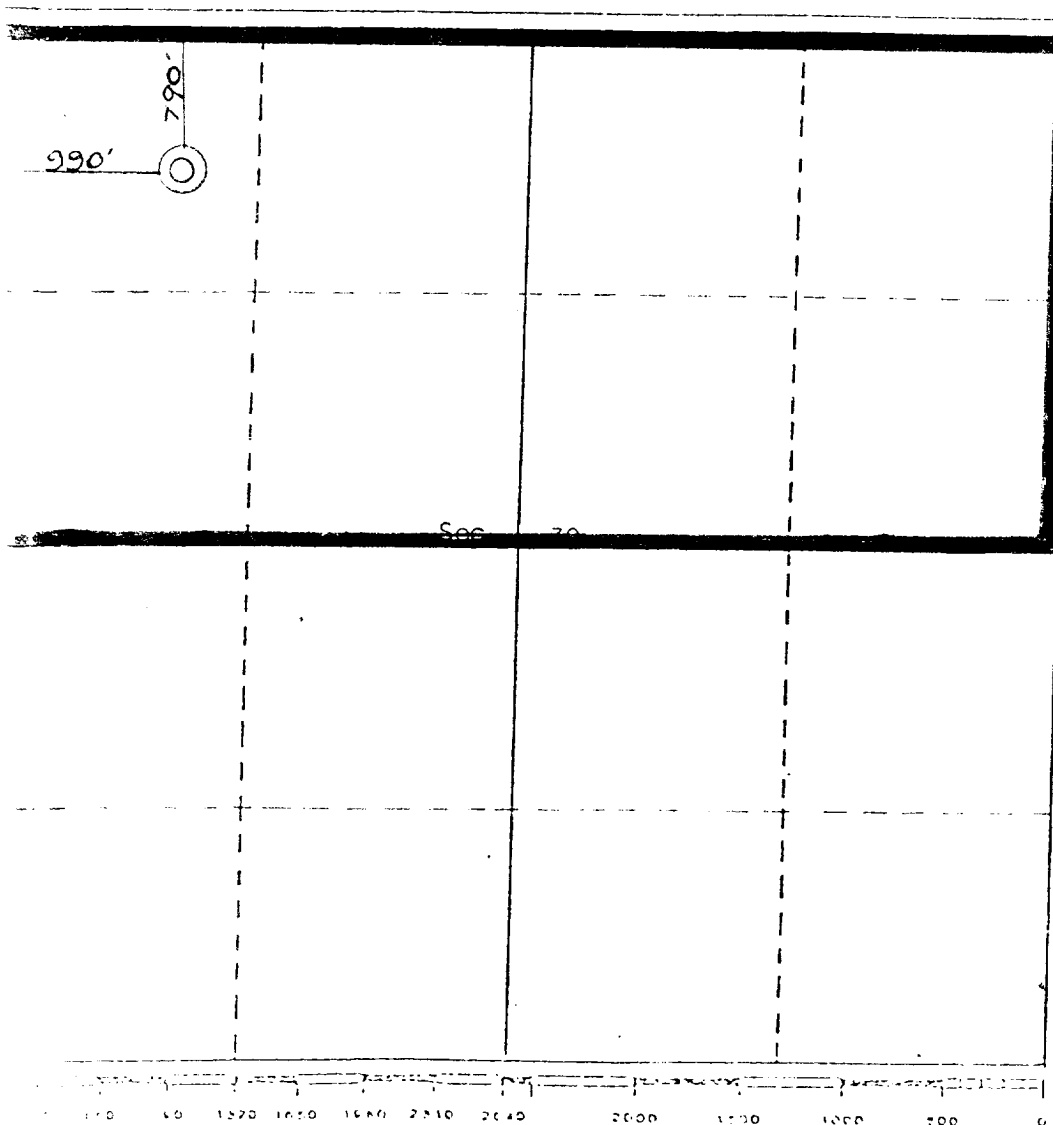
LOBO PRODUCTION		MESA TWIN MOUNDS		
Section	Township	Range	County	
30	30 NORTH	14 WEST	SAN JUAN	
Well Location of Well:				
790	feet from the NORTH	990	feet from the WEST	
Sound Level Elev.	Producing Formation	Pool	Dedicated Acreage:	
5492	Basin Dakota	Dakota	N 320	

- Outline the acreage dedicated to the subject well by colored pencil or hatchure marks on the plat below.
- If more than one lease is dedicated to the well, outline each and identify the ownership thereof (both as to working interest and royalty).
- If more than one lease of different ownership is dedicated to the well, have the interests of all owners been consolidated by communitization, unitization, force-pooling, etc?

☐ Yes ☐ No If answer is "yes," type of consolidation _____

If answer is "no," list the owners and tract descriptions which have actually been consolidated. (Use reverse side of this form if necessary.) _____

No allowable will be assigned to the well until all interests have been consolidated (by communitization, unitization, force-pooling, or otherwise) or until a non-standard unit, eliminating such interests, has been approved by the Division



CERTIFICATION

I hereby certify that the information contained herein is true and complete to the best of my knowledge and belief.

R.E. Lauritsen

Name

R.E. Lauritsen

Position

Partner

Company

Lobo Production

Date

June 3, 1983

I hereby certify that the well location shown on this plat was plotted from field notes of actual surveys made by me or under my supervision, and that the same is true and correct to the best of my knowledge and belief.

5-11-1983

Done Surveyed by *Curtis G. Stocking*
Registered Professional Engineer
and/or Land Surveyor
Curtis G. Stocking
5980