

UNITED STATES  
DEPARTMENT OF THE INTERIOR  
BUREAU OF LAND MANAGEMENT

FORM APPROVED  
Budget Bureau No. 1004-0135  
Expires: March 31, 1993

**SUNDRY NOTICES AND REPORTS ON WELLS**

Do not use this form for proposals to drill or to deepen or reentry to a different reservoir.  
Use "APPLICATION FOR PERMIT—" for such proposals

5. Lease Designation and Serial No.

NMNM 27024

6. If Indian, Allottee or Tribe Name

7. If Unit or CA, Agreement Designation

8. Well Name and No

Mesa Twin Mounds 30 #1

9. API Well No.

NA

10. Field and Pool, or Exploratory Area

Basin Dakota

11. County or Parish, State

San Juan, NM

**SUBMIT IN TRIPLICATE**

1. Type of Well

☐ Oil Well ☒ Gas Well ☐ Other

2. Name of Operator

Conoco, Inc.

3. Address and Telephone No

10 Desta Dr. Ste 100W, Midland, TX 79705

4. Location of Well (Footage, Sec., T., R., M., or Survey Description)

790' FNL & 990' FWL  
Sec. 30 T-30N, R-14W

12. CHECK APPROPRIATE BOX(s) TO INDICATE NATURE OF NOTICE, REPORT, OR OTHER DATA

TYPE OF SUBMISSION

☒ Notice of Intent

☐ Subsequent Report

☐ Final Abandonment Notice

TYPE OF ACTION

☒ Abandonment

☐ Recompletion

☐ Plugging Back

☐ Casing Repair

☐ Altering Casing

☐ Other

☐ Change of Plans

☐ New Construction

☐ Non-Routine Fracturing

☐ Water Shut-Off

☐ Conversion to Injection

☐ Dispose Water

(Note: Report results of multiple completion on Well Completion or Recompletion Report and Log form.)

13. Describe Proposed or Completed Operations (Clearly state all pertinent details, and give pertinent dates, including estimated date of starting any proposed work. If well is directionally drilled, give subsurface locations and measured and true vertical depths for all markers and zones pertinent to this work.)\*

It is proposed to plug and abandon this well according to the attached procedure and wellbore diagrams.

RECEIVED  
JAN 10 1995  
OIL & GAS DIV.  
BUREAU

RECEIVED  
JAN 10 1995  
OIL & GAS DIV.  
BUREAU

14. I hereby certify that the foregoing is true and correct

Signed Jerry W. Hoover

Title Sr. Conservation Coordinator

Date 12/20/94

(This space for Federal or State office use)

Approved by

Conditions of approval, if any:

Title

APPROVED  
AS AMENDED

Title 18 U.S.C. Section 1001, makes it a crime for any person knowingly and willfully to make to any department or agency of the United States any false, fictitious or fraudulent statements or representations as to any matter within its jurisdiction.

\*See Instruction on Reverse Side

NMOCD

Chip Harrold  
for DISTRICT MANAGER

## PLUG AND ABANDONMENT PROCEDURE

11-28-94

Mesa Twin Mounds #1 (GI/Dk)  
NW, Sec. 30, T30N, R14W  
San Juan County, New Mexico

Note: All cement volumes use 100% excess outside pipe and 50' excess inside pipe. The stabilizing wellbore fluid will be 8.3 ppg, sufficient to balance all exposed formation pressures.

1. Install and/or test rig anchors. Prepare blow pit. Comply to all NMOCD, BLM and Conoco safety rules and regulations.
2. MOL and RUSU. Blow well down; kill with water if necessary. ND wellhead and NU BOP and stripping head; test BOP.
3. Unseat pump and pump hot water down tubing; reseal pump and pressure test tubing to 1000#. POH and LD 5/8" rods (Note rods may be parted and/or stuck).
4. POH and tally 2-1/16" and 2-3/8" tubing; visually inspect. If necessary LD and PU 2" tubing work string.
5. **Plug #1 (Dakota perfs, 5760' - 5200')**: RIH with open ended tubing to 5760' or as deep as possible; pump 30 bbls water down tubing. Mix 70 sxs Class B cement and spot balanced plug from 5760' - 5200' over the Dakota perfs. POH to 5200'.
6. **Plug #2 (Gallup perfs, 5200' - 4670')**: Mix 88 sxs Class B cement and spot balanced plug from 5200' to 4670' over the Gallup perfs. POH with tubing and WOC. RIH and tag cement. Pull above cement and circulate well clean. Pressure test casing to 500#. POH to 3473'.
7. **Plug #3 (Point Lookout top, 3473' - 3373')** Mix 17 sxs Class B cement and spot balanced plug from 3473' to 3373'. POH to 1938'.
8. **Plug #4 (Mesaverde top, 1980' - 1880')** Mix 17 sxs Class B cement and spot balanced plug from 1980' to 1880'. POH to 998'.
9. **Plug #5 (Pictured Cliffs, 998' - 898')**: Mix 17 sxs Class B cement and spot balanced plug from 998' - 898'. POH to 263'.
10. **Plug #5 (Surface)**: With tubing at 263' mix and pump 30 sxs Class B cement from 263' to surface, circulate good cement out casing valve. POH and LD tubing. Shut in well and WOC.
11. ND BOP and cut off wellhead below surface casing flange and install P&A marker with cement to BLM spec. RD and MOL. Cut off anchors.
12. Restore location per BLM stipulations.

# Mesa Twin Mounds #1

PROPOSED P&A  
Gallup / Basin Dakota

NW, Section 30, T-30-N, R-14-W, San Juan County, NM

Today's Date: 11/28/94  
Spud: 6/28/83  
Completed: 7/18/83  
Kirtland @ surface

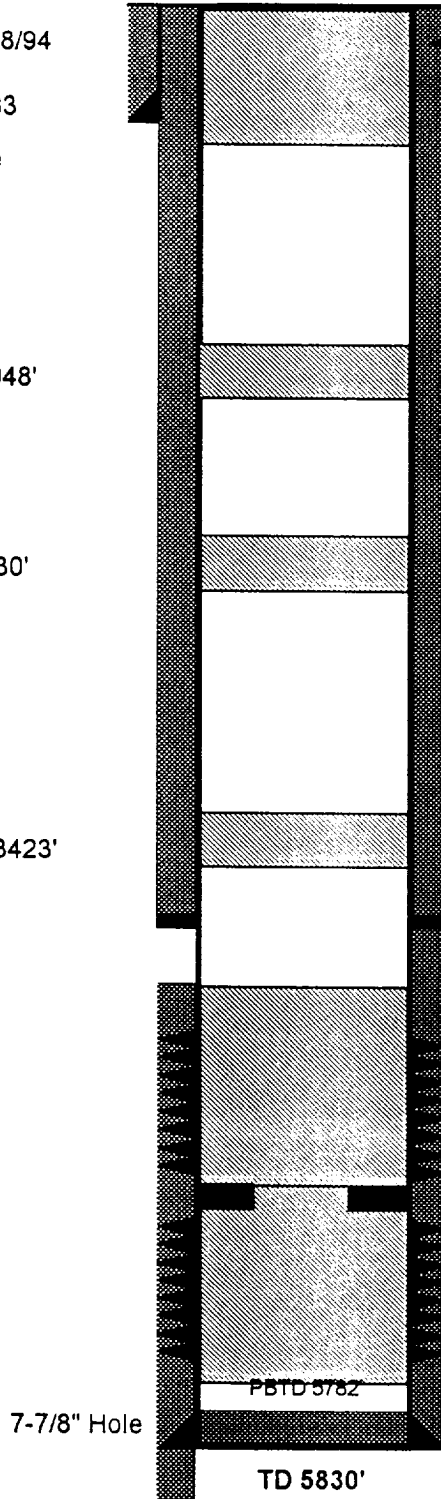
Pictured Cliffs @ 948'

Mesaverde @ 1930'

Point Lookout @ 3423'

Gallup @ 4720'

Dakota @ 5608'



Cement circulated surface.  
8-5/8" 24#, csg set @ 213'  
Cmt w/177 cf (Circulated to Surface)

Plug #6: 263' - Surface  
30 sxs Class B cement

Plug #5: 998' - 888'  
17 sxs Class B cement

Plug #4: 1980' - 1880'  
17 sxs Class B cement

Plug #3: 3473' - 3373'  
17 sxs Class B cement

DV Tool @ 3777' (1227 cf cement)  
Top of Cmt @ DV tool (calc. 75%)

Gallup Perforations:  
4724' - 5160'

Model D Packer @ 5200'

Dakota Perforations:  
5504' - 5597'

Plug #2: 5200' - 4670'  
88 sxs Class B cement,  
(50% excess, long plug).

Plug #1: 5760' - 5200'  
70 sxs Class B cement,  
(no excess)

5-1/2" 17#, @ 5830'  
(544 cf cement)

# Mesa Twin Mounds #1

PROPOSED P&A

Gallup / Basin Dakota

NW, Section 30, T-30-N, R-14-W, San Juan County, NM

Today's Date: 11/28/94

Spud: 6/28/83

Completed: 7/18/83

Kirtland @ surface

Pictured Cliffs @ 948'

Mesaverde @ 1930'

Point Lookout @ 3423'

Gallup @ 4720'

Dakota @ 5608'

7-7/8" Hole

PBTD 5782'

TD 5830'

Cement circulated surface.

8-5/8" 24#, csg set @ 213'  
Cmt w/177 cf (Circulated to Surface)

Plug #6: 263' - Surface  
30 sxs Class B cement

Plug #5: 998' - 888'  
17 sxs Class B cement

Plug #4: 1980' - 1880'  
17 sxs Class B cement

Plug #3: 3473' - 3373'  
17 sxs Class B cement

DV Tool @ 3777' (1227 cf cement)

Top of Cmt @ DV tool (calc. 75%)

Gallup Perforations:  
4724' - 5160'

Model D Packer @ 5200'

Dakota Perforations:  
5504' - 5597'

Plug #2: 5200' - 4670'  
88 sxs Class B cement,  
(50% excess, long plug)

Plug #1: 5760' - 5200'  
70 sxs Class B cement,  
(no excess)

5-1/2" 17#, @ 5830'  
(544 cf cement)