

UNITED STATES  
DEPARTMENT OF THE INTERIOR  
GEOLOGICAL SURVEY

## APPLICATION FOR PERMIT TO DRILL, DEEPEN, OR PLUG BACK

## 1a. TYPE OF WORK

DRILL ☒DEEPEN ☐PLUG BACK ☐

## b. TYPE OF WELL

OIL  
WELL ☐GAS  
WELL ☒

OTHER

SINGLE  
ZONE ☐MULTIPLE  
ZONE ☐

## 2. NAME OF OPERATOR

Robert L. Bayless

## 3. ADDRESS OF OPERATOR

P.O. Box 1541, Farmington, NM 87499

## 4. LOCATION OF WELL (Report location clearly and in accordance with any State requirements.)

At surface

1810' FSL &amp; 1100' FEL

At proposed prod. zone

same

## 14. DISTANCE IN MILES AND DIRECTION FROM NEAREST TOWN OR POST OFFICE\*

## 15. DISTANCE FROM PROPOSED\*

LOCATION TO NEAREST  
PROPERTY OR LEASE LINE, FT.  
(Also to nearest drg. unit line, if any)18. DISTANCE FROM PROPOSED LOCATION\*  
TO NEAREST WELL, DRILLING, COMPLETED,  
OR APPLIED FOR, ON THIS LEASE, FT.

## 16. NO. OF ACRES IN LEASE

640

## 19. PROPOSED DEPTH

6250

17. NO. OF ACRES ASSIGNED  
TO THIS WELL

320

## 20. ROTARY OR CABLE TOOLS

Rotary

## 21. ELEVATIONS (Show whether DF, RT, GR, etc.)

5704' GL

DRILLING OPERATIONS AUTHORIZED ARE  
SUBJECT TO COMPLIANCE WITH ATTACHED

## 23.

GENERAL REQUIREMENTS AND CEMENTING PROGRAM

This action is subject to administrative  
appeal pursuant to 20 CFR 290.

SIZE OF HOLE	SIZE OF CASING	WEIGHT PER FOOT	SETTING DEPTH	QUANTITY OF CEMENT
12-1/4"	8-5/8"	24	200	118ft <sup>3</sup> circ. to surf.
7-7/8"	4-1/2"	10.5	6250	1761ft <sup>3</sup> to cover Fruitland formation

Will drill 12 1/4" hole to 200' and set 200' of 8-5/8", 24#/ft., J-55 used casing and cement w/ 118 ft<sup>3</sup> Class B cement w/2% CaCl<sub>2</sub>. Cement will be circulated to surface. Will drill to 6250' and log well. If well appears productive, will run 6250' of 4 1/2", 10.5#/ft., J-55 new casing with cement stage collar @ 4250'. Will cement long string as follows: 1st stage: 413ft<sup>3</sup> Class B cement; 2nd stage: 1348 ft<sup>3</sup> Class B w/2% D-79 extender to cover the Fruitland formation. Will perforate and stimulate well as required. No abnormal pressures or temperatures are anticipated. Circulation medium will be clear water, natural mud, and water loss additives. Blowout preventer schematic is attached. The gas from this formation is dedicated.

ESTIMATED TOPS: GL 5704' KB 5717'

Kirtland	- Surface	Gallup	- 5117'
Fruitland	- 953'	Greenhorn	- 5874'
Pictured Cliffs	- 1383'	Dakota (-270)	- 5987'
Cliff House	- 2893'	T.D.	- 6250'
Point Lookout	- 3782'		

IN ABOVE SPACE DESCRIBE PROPOSED PROGRAM: If proposal is to deepen or plug back, give data on present productive zone and proposed new productive zone. If proposal is to drill or deepen directionally, give pertinent data on subsurface locations and measured and true vertical depths. Give blowout preventer program, if any.

## 24.

SIGNED

*Kevin H. McLean*

TITLE Petroleum Engineer

DATE May 19, 1983

(This space for Federal or State office use)

PERMIT NO.

APPROVAL DATE

APPROVED BY

TITLE

CONDITIONS OF APPROVAL, IF ANY:

APPROVED  
AS AMENDED

DATE

JUL 06 1983

*James F. Sims*  
JAMES F. SIMS

DISTRICT ENGINEER

Acting Area Manager

NMOCB

OIL CONSERVATION DIVISION

P. O. BOX 2088

SANTA FE, NEW MEXICO 87501

Form C-107  
Revised 10-1-78

All distances must be from the outer boundaries of the Section.

Operator <b>R. L. BAYLESS</b>			Lease <b>MORTON</b>		Well No. <b>2E</b>
Unit Letter <b>I</b>	Section <b>23</b>	Township <b>30N</b>	Range <b>11W</b>	County <b>San Juan</b>	
Actual Footage Location of Well: <b>1810</b> feet from the <b>South</b> line and <b>1100</b> feet from the <b>East</b> line					
Ground Level Elev: <b>5704</b>	Producing Formation <b>Dakota</b>		Pool <b>Basin Dakota</b>		Dedicated Acreage: <b>320</b> Acres

1. Outline the acreage dedicated to the subject well by colored pencil or hachure marks on the plat below.
2. If more than one lease is dedicated to the well, outline each and identify the ownership thereof (both as to working interest and royalty).
3. If more than one lease of different ownership is dedicated to the well, have the interests of all owners been consolidated by communitization, unitization, force-pooling, etc?

☐ Yes ☐ No If answer is "yes," type of consolidation \_\_\_\_\_

If answer is "no," list the owners and tract descriptions which have actually been consolidated (Use reverse side of this form if necessary.) \_\_\_\_\_

No allowable will be assigned to the well until all interests have been consolidated (by communitization, unitization, forced-pooling, or otherwise) or until a non-standard unit, eliminating such interests, has been approved by the Commission.

**RECEIVED**  
JUL 7-1983

**OIL CON. DIV.**  
**DIST. 3**

Sec.		<div data-bbox="574 1000 1029 1391" data-label="Text"> <p><b>RECEIVED</b> MAY 23 1983 U. S. GEOLOGICAL SURVEY FARMINGTON, N. M.</p> </div>	
23		1100'	
		1810'	

CERTIFICATION

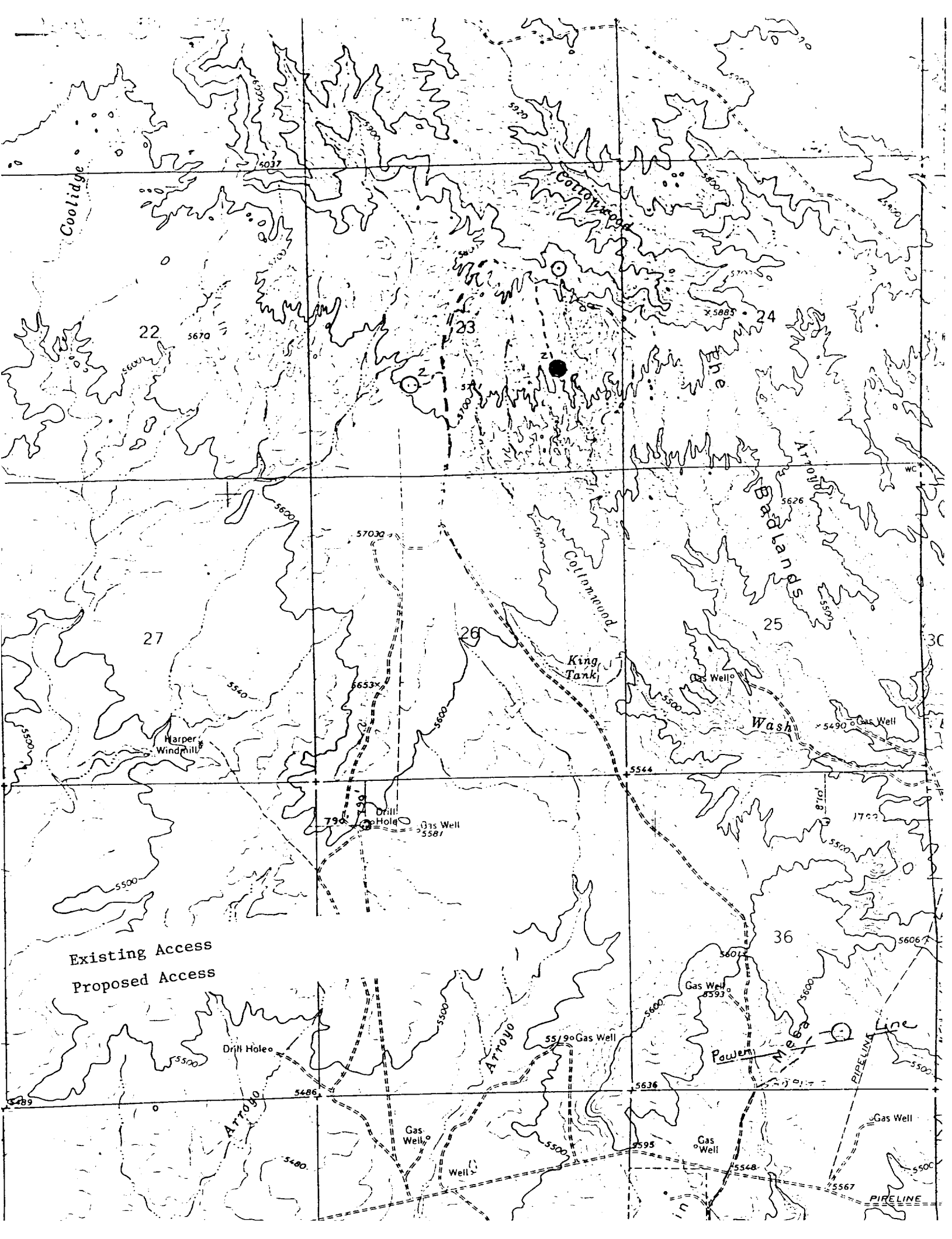
I hereby certify that the information contained herein is true and complete to the best of my knowledge and belief.

*Kevin H. McCord*

Name  
**KEVIN H. MCCORD**  
Position  
**Petroleum Engineer**  
Company  
**Robert L. Bayless**  
Date  
**May 19, 1983**

I hereby certify that the well location shown on this plat was plotted from field notes of actual surveys made by me or under my supervision, and that the same is true and correct to the best of my knowledge and belief.

Date Surveyed  
**May 17, 1983**  
Registered Professional Engineer and Land Surveyor  
*Fred B. Kerr Jr.*  
**Fred B. Kerr Jr.**  
Certificate No. **4222**  
**1950**



UNITED STATES  
DEPARTMENT OF THE INTERIOR  
GEOLOGICAL SURVEY

SUNDRY NOTICES AND REPORTS ON WELLS

(Do not use this form for proposals to drill or to deepen or plug back to a different reservoir. Use Form 9-331-C for such proposals.)

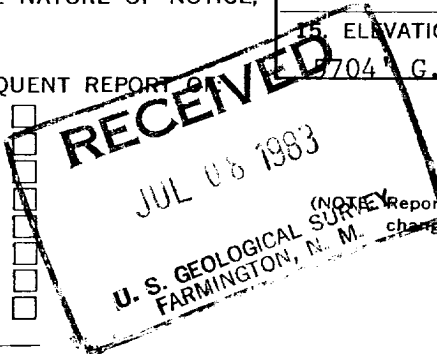
1. oil well ☐ gas well ☒ other ☐  
2. NAME OF OPERATOR  
Robert L. Bayless  
3. ADDRESS OF OPERATOR  
P.O. Box 1541, Farmington, NM 87499  
4. LOCATION OF WELL (REPORT LOCATION CLEARLY. See space 17 below.)  
AT SURFACE: 1810' FSL & 1100' FEL  
AT TOP PROD. INTERVAL: same  
AT TOTAL DEPTH: same

16. CHECK APPROPRIATE BOX TO INDICATE NATURE OF NOTICE, REPORT, OR OTHER DATA

REQUEST FOR APPROVAL TO:

TEST WATER SHUT-OFF ☐  
FRACTURE TREAT ☐  
SHOOT OR ACIDIZE ☐  
REPAIR WELL ☐  
PULL OR ALTER CASING ☐  
MULTIPLE COMPLETE ☐  
CHANGE ZONES ☐  
ABANDON\* ☐  
(other) Name Change ☐

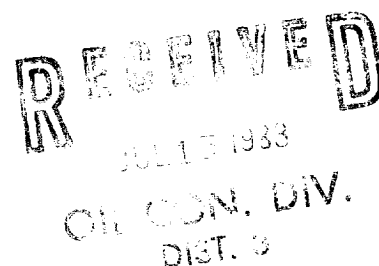
SUBSEQUENT REPORT ☐



(NOTE: Report results of multiple completion or zone change on Form 9-330.)

17. DESCRIBE PROPOSED OR COMPLETED OPERATIONS (Clearly state all pertinent details, and give pertinent dates, including estimated date of starting any proposed work. If well is directionally drilled, give subsurface locations and measured and true vertical depths for all markers and zones pertinent to this work.)\*

Original well name Morton #2E, new well name Morton #2.



Subsurface Safety Valve: Manu. and Type \_\_\_\_\_ Set @ \_\_\_\_\_ Ft.

18. I hereby certify that the foregoing is true and correct

SIGNED Robert L. Bayless TITLE Operator DATE July 7, 1983

(This space for Federal or State office use)

APPROVED BY \_\_\_\_\_ TITLE \_\_\_\_\_ DATE \_\_\_\_\_  
CONDITIONS OF APPROVAL, IF ANY:

ACCEPTED FOR RECORD

\*See Instructions on Reverse Side

JUL 14 1983

NMOCC

FARMINGTON DISTRICT  
BY Smm