

UNITED STATES
DEPARTMENT OF THE INTERIOR
GEOLOGICAL SURVEY

30-045-25767

APPLICATION FOR PERMIT TO DRILL, DEEPEN, OR PLUG BACK

1a. TYPE OF WORK
 DRILL DEEPEN PLUG BACK

b. TYPE OF WELL
 OIL WELL GAS WELL OTHER SINGLE ZONE MULTIPLE ZONE

2. NAME OF OPERATOR
 Robert L. Bayless

3. ADDRESS OF OPERATOR
 P.O. Box 1541, Farmington, NM 87499

4. LOCATION OF WELL (Report location clearly and in accordance with any State requirements.)
 At surface 1570' FSL & 1750' FWL

At proposed prod. zone same

14. DISTANCE IN MILES AND DIRECTION FROM NEAREST TOWN OR POST OFFICE

15. DISTANCE FROM PROPOSED* LOCATION TO NEAREST PROPERTY OR LEASE LINE, FT. (Also to nearest drlg. unit line, if any)

18. DISTANCE FROM PROPOSED LOCATION* TO NEAREST WELL, DRILLING, COMPLETED, OR APPLIED FOR, ON THIS LEASE, FT.

21. ELEVATIONS (Show whether DF, RT, GR, etc.)
 5702' GL

23. PROPOSED CASING AND CEMENTING PROGRAM

5. LEASE DESIGNATION AND SERIAL NO.
 NM 26357

6. IF INDIAN, ALLOTTEE OR TRIBE NAME

7. UNIT AGREEMENT NAME

8. FARM OR LEASE NAME
 Morton

9. WELL NO.
 #2 E

10. FIELD AND POOL, OR WILDCAT
 Basin Dakota

11. SEC., T., R., M., OR BLK. AND SURVEY OR AREA
 Sec. 23, T30N, R14W

12. COUNTY OR PARISH 13. STATE
 San Juan New Mexico

RECEIVED
 MAY 23 1983
 U. S. GEOLOGICAL SURVEY
 FARMINGTON, N. M.

16. NO. OF ACRES IN LEASE
 840

17. NO. OF ACRES ASSIGNED TO THIS WELL
 320

19. PROPOSED DEPTH
 6215'

20. ROTARY OR CABLE TOOLS
 Rotary

22. APPROX. DATE WORK WILL START*
 ASAP

DRILLING OPERATIONS AUTHORIZED ARE SUBJECT TO COMPLIANCE WITH ATTACHED "GENERAL REQUIREMENTS"

This action is subject to administrative appeal pursuant to 30 CFR 250.

SIZE OF HOLE	SIZE OF CASING	WEIGHT PER FOOT	SETTING DEPTH	QUANTITY OF CEMENT
12-1/4"	8-5/8"	24	200	118 ft ³ circ. to surf.
7-7/8"	4-1/2"	10.5	6214	1761 ft ³ to cover Fruitland formation

Will drill 12-1/4" hole to 200' & set 200' of 8-5/8", 24#/ft., J-55 used casing and cement w/ 118ft³ Class B cement w/2% CaCl₂. Cement will be circ. to surface. Will drill to 6215' and log well. If well appears productive, will run 6215' of 4-1/2" 10.5#/ft., J-55 new casing with cement stage collar @ 4250'. Will cement long string as follows: 1st stage: 413ft³ Class B cement; 2nd stage: 1348 ft³ Class B w/2% D-79 extender to cover the Fruitland formation. Will perf and stimulate well as required. No abnormal pressures or temperatures are anticipated. Circulation medium will be clear water, natural mud, and water loss additives. Blowout preventer schematic is attached. The gas from this formation is dedicated.

ESTIMATED TOPS: GL 5702' KB 5715'
 Kirtland - Surface Gallup - 5085'
 Fruitland - 953' Greenhorn - 5842'
 Pic. Cliffs - 1351' Dakota (-240)-5955'
 Cliffhouse - 2861' T.D. -6215'
 PointLookout- 3750'

RECEIVED
 JUL 7-1983

IN ABOVE SPACE DESCRIBE PROPOSED PROGRAM: If proposal is to deepen or plug back, give data on present productive zone and proposed new productive zone. If proposal is to drill or deepen directionally, give pertinent data on subsurface locations and measured and true vertical depths. Give blowout preventer program, if any.

24. SIGNED Kevin H. McCool TITLE Petroleum Engineer DATE May 19, 1983

(This space for Federal or State office use)

PERMIT NO. _____ APPROVAL DATE _____

APPROVED BY _____ TITLE _____

CONDITIONS OF APPROVAL, IF ANY:

APPROVED
 AS AMENDED

JUL 06 1983
 JAMES F. SIMS
 DISTRICT ENGINEER
 Acting Area Manager

oh 2

NR000

OIL CONSERVATION DIVISION

STATE OF NEW MEXICO
ENERGY AND MINERALS DEPARTMENT

P. O. BOX 2088
SANTA FE, NEW MEXICO 87501

Form C-107
Revised 10-1-78

All distances must be from the outer boundaries of the Section.

Operator R. L. BAYLESS		Lease MORTON		Well No. 2	
Unit Letter K	Section 23	Township 30N	Range 14W	County San Juan	
Actual Footage Location of Well: 1570 feet from the South line and 1750 feet from the West line					
Ground Level Elev: 5702	Producing Formation Dakota	Pool Basin Dakota		Dedicated Acreage: 320 Acres	

- Outline the acreage dedicated to the subject well by colored pencil or hachure marks on the plat below.
- If more than one lease is dedicated to the well, outline each and identify the ownership thereof (both as to working interest and royalty).
- If more than one lease of different ownership is dedicated to the well, have the interests of all owners been consolidated by communitization, unitization, force-pooling, etc?

RECEIVED

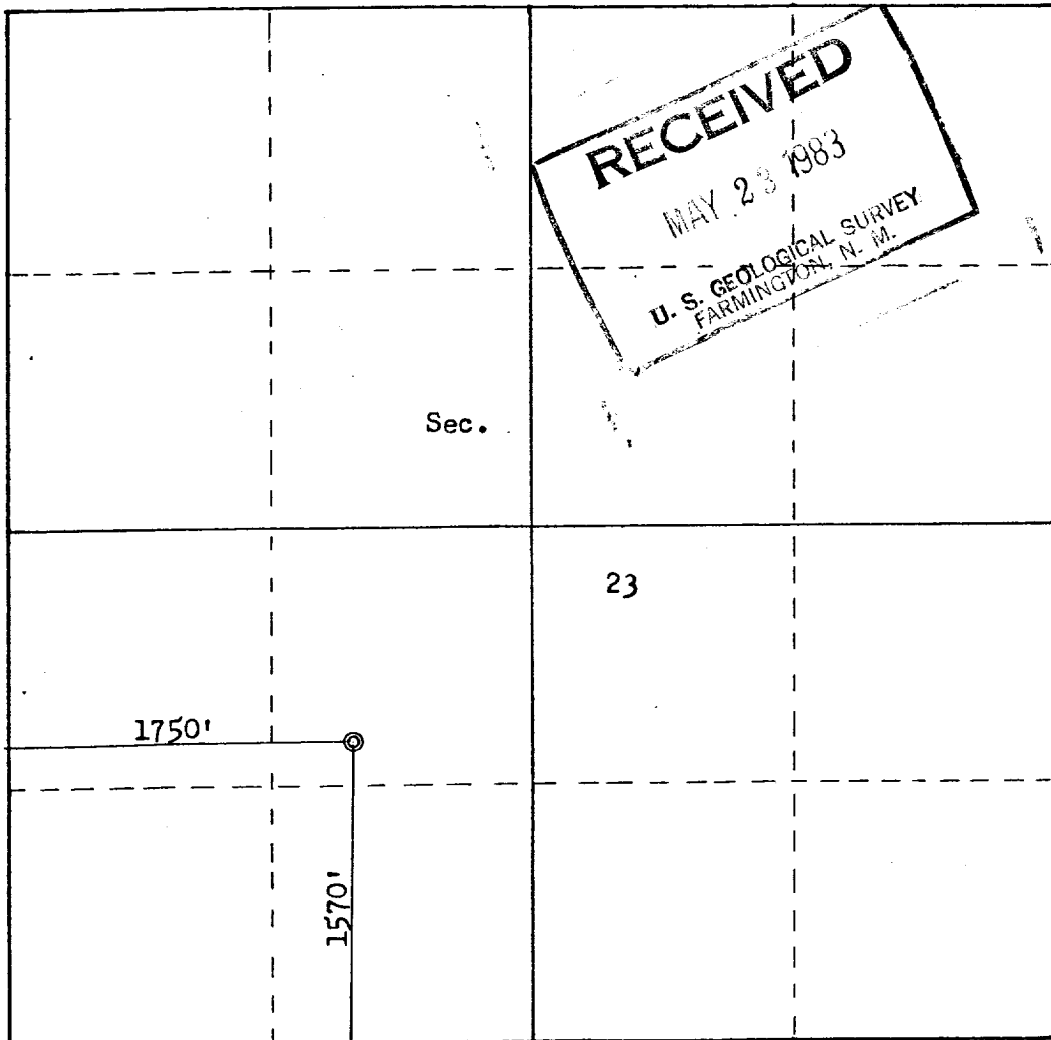
JUL 7 - 1983

Yes No If answer is "yes," type of consolidation _____

OIL CON. DIV.

If answer is "no," list the owners and tract descriptions which have actually been consolidated. (Use reverse side of this form if necessary.) _____

No allowable will be assigned to the well until all interests have been consolidated (by communitization, unitization, forced-pooling, or otherwise) or until a non-standard unit, eliminating such interests, has been approved by the Commission.



Scale: 1"=1000'

CERTIFICATION

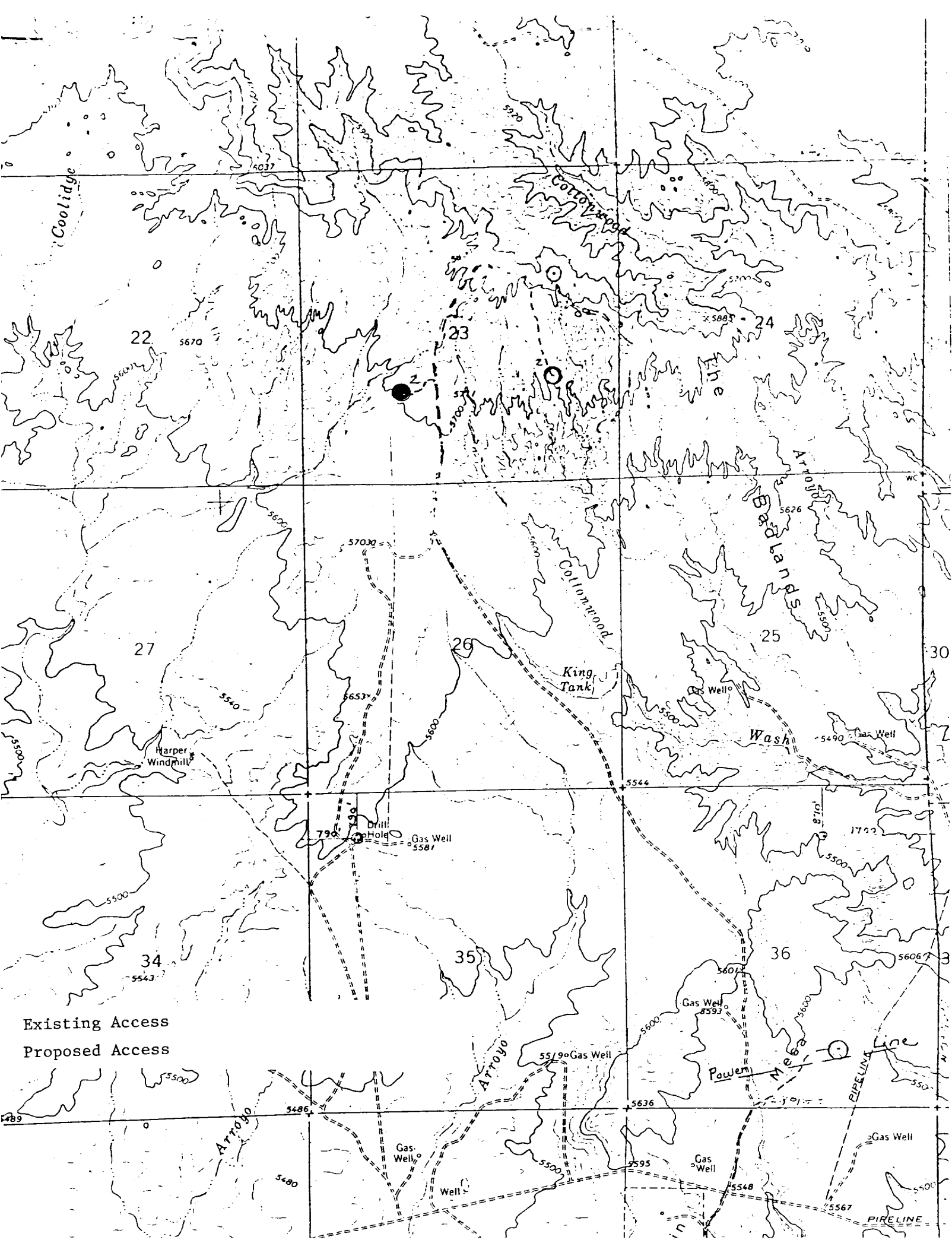
I hereby certify that the information contained herein is true and complete to the best of my knowledge and belief.

Kevin H. McCord

Name	Kevin H. McCord
Position	Petroleum Engineer
Company	Robert L. Bayless
Date	May 19, 1983

I hereby certify that the well location shown on this plat was plotted from field notes of actual surveys made by me or under my supervision, and that the same is true and correct to the best of my knowledge and belief.

Date Surveyed	May 17, 1983
Registered Professional Engineer and Land Surveyor	<i>Fred B. Kerr Jr.</i> Fred B. Kerr Jr.
Certificate No.	3950



Existing Access
Proposed Access

1489

Arroyo

5579 Gas Well

Gas Well 5593

Gas Well

Well

Gas Well 5595

Gas Well 5548

Gas Well

PIPERINE

Powen

Wash

King Tank

Harper Windmill

22

23

24

27

26

25

34

35

36

30

3

Coolidge

Cottonwood

Arroyo

Cottonwood

The

Arroyo

1702

5490 Gas Well

870

870

870

870

870

870

870

870

870

870

870

870

870

870

870

870

870

870

5037

5670

5600

5900

5583

5700

57030

5653

790

5581 Gas Well

5544

5500

5543

5600

5590 Gas Well

5600

5636

5595

5548

5490 Gas Well

870

870

870

870

870

870

870

870

870

870

870

870

870

870

870

870

870

30

3

5500

5500

5500

5500

5480

5480

5480

5480

5480

5480

5480

5480

5480

5480

5480

5480

5480

5480

5480

5480

5480

5480

5480

5480

5480

5480

5480

5480

5480

5480

5480

5480

5480

5480

5480

5480

5480

5480

5480

5480

5480

5480

5480

5480

5480

5480

5480

5480

5480

5480

5480

5480

5480

5480

5480

5480

5480

5480

5480

5480

5480

5480

5480

5480

5480

5480

5480

5480

5480

5480

5480

5480

5480

5480

5480

5480

5480

5480

5480

5480

5480

5480

5480

5480

5480

5480

5480

5480

5480

5480

5480

5480

5480

5480

5480

5480

5480

5480

5480

5480

5480

5480

5480

5480

5480

5480

5480

5480

5480

5480

5480

5480

5480

5480

5480

5480

5480

5480

5480

5480

5480

5480

5480

5480

5480

5480

5480

5480

5480

5480

5480

5480

5480

5480

5480

5480

5480

5480

5480

5480

5480

5480

5480

5480

5480

5480

5480

5480

5480

5480

5480

5480

5480

5480

5480

5480

5480

5480

5480

5480

5480

5480

5480

5480

5480

5480

5480

5480

5480

5480

5480

5480

5480

5480

5480

5480

5480

5480

5480

5480

5480

5480

5480

5480

5480

5480

5480

5480

5480

5480

5480

5480

5480

5480

5480

5480

5480

5480

5480

5480

5480

5480

5480

5480

5480

5480

5480

5480

5480

5480

5480

5480

5480

5480

5480

5480

5480

5480

5480

5480

5480

5480

5480

5480

5480

5480

5480

5480

5480

5480

UNITED STATES
DEPARTMENT OF THE INTERIOR
GEOLOGICAL SURVEY

SUNDRY NOTICES AND REPORTS ON WELLS

(Do not use this form for proposals to drill or to deepen or plug back to a different reservoir. Use Form 9-331-C for such proposals.)

1. oil well gas well other

2. NAME OF OPERATOR
Robert L. Bayless

3. ADDRESS OF OPERATOR
P.O. Box 1541, Farmington, NM 87499

4. LOCATION OF WELL (REPORT LOCATION CLEARLY. See space 17 below.)
AT SURFACE: 1570' FSL & 1750' FWL
AT TOP PROD. INTERVAL: same
AT TOTAL DEPTH: same

5. LEASE
NM 26357

6. IF INDIAN, ALLOTTEE OR TRIBE NAME

7. UNIT AGREEMENT NAME

8. FARM OR LEASE NAME
Morton

9. WELL NO.
#2-E

10. FIELD OR WILDCAT NAME
Basin Dakota

11. SEC., T., R., M., OR BLK. AND SURVEY OR AREA
Sec. 23, T30N, R14W

12. COUNTY OR PARISH | 13. STATE
San Juan | New Mexico

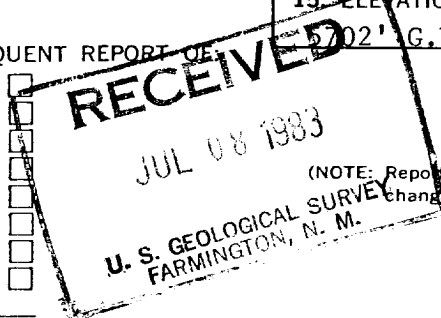
14. API NO.

15. ELEVATIONS (SHOW DF, KDB, AND WD)
202' G.L.

16. CHECK APPROPRIATE BOX TO INDICATE NATURE OF NOTICE, REPORT, OR OTHER DATA

- REQUEST FOR APPROVAL TO:
- TEST WATER SHUT-OFF
 - FRACTURE TREAT
 - SHOOT OR ACIDIZE
 - REPAIR WELL
 - PULL OR ALTER CASING
 - MULTIPLE COMPLETE
 - CHANGE ZONES
 - ABANDON*
 - (other) Name change

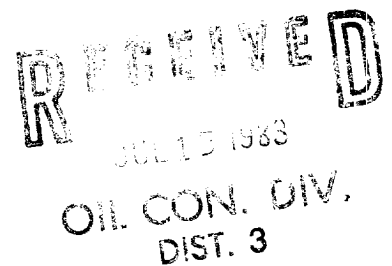
SUBSEQUENT REPORT OF:



(NOTE: Report results of multiple completion or zone change on Form 9-330.)

17. DESCRIBE PROPOSED OR COMPLETED OPERATIONS (Clearly state all pertinent details, and give pertinent dates, including estimated date of starting any proposed work. If well is directionally drilled, give subsurface locations and measured and true vertical depths for all markers and zones pertinent to this work.)*

Original well name Morton #2, new well name Morton #2E.



Subsurface Safety Valve: Manu. and Type _____ Set @ _____ Ft.

18. I hereby certify that the foregoing is true and correct

SIGNED Robert L. Bayless TITLE Operator DATE July 7, 1983

(This space for Federal or State office use)

APPROVED BY _____ TITLE _____ DATE _____
CONDITIONS OF APPROVAL, IF ANY:

ACCEPTED FOR RECORD

*See Instructions on Reverse Side

JUL 14 1983

NMOCC

FARMINGTON DISTRICT
BY Jmm