

UNITED STATES
DEPARTMENT OF THE INTERIOR
GEOLOGICAL SURVEY

30-045-25816

APPLICATION FOR PERMIT TO DRILL, DEEPEN, OR PLUG BACK

1a. TYPE OF WORK

DRILL ☒DEEPEN ☐PLUG BACK ☐

b. TYPE OF WELL

OIL
WELL ☒GAS
WELL ☒

OTHER

SINGLE
ZONE ☐MULTIPLE
ZONE ☒

2. NAME OF OPERATOR

Lobo Production

3. ADDRESS OF OPERATOR

PO Box 2364 Farmington, New Mexico 87499

4. LOCATION OF WELL (Report location clearly and in accordance with any State requirements.)

At surface

1825 990
1850 FSL, 1120 FWL

At proposed prod. zone

14. DISTANCE IN MILES AND DIRECTION FROM NEAREST TOWN OR POST OFFICE*

4 miles North of Kirtland New Mexico

15. DISTANCE FROM PROPOSED*

LOCATION TO NEAREST
PROPERTY OR LEASE LINE, FT.
(Also to nearest drlg. unit line, if any)

1120 FWL

16. NO. OF ACRES IN LEASE

960

18. DISTANCE FROM PROPOSED LOCATION*

TO NEAREST WELL, DRILLING, COMPLETED,
OR APPLIED FOR, ON THIS LEASE, FT.

0

19. PROPOSED DEPTH

5830'

17. NO. OF ACRES ASSIGNED
TO THIS WELL

320-Dakota 40-Gallup

20. ROTARY OR CABLE TOOLS

Rotary

21. ELEVATIONS (Show whether DF, RT, GR, etc.)

5392 GR. SUBJECT TO COMPLIANCE WITH ATTACHED

22. APPROX. DATE WORK WILL START*

9-31-83

23. PROPOSED CASING AND CEMENTING PROGRAM

This action is subject to administrative
appeal pursuant to 30 CFR 290.

SIZE OF HOLE	SIZE OF CASING	WEIGHT PER FOOT	SETTING DEPTH	QUANTITY OF CEMENT
12 1/4	8 5/8	K-55 24#	212.9'	175 sacks
7 7/8	5 1/2	J-55 17#	5830'	900 sacks

Will drill 12 1/4 hole to 212.9' of 8 5/8" 24# casing with 175 sacks cement. Will drill 7 7/8" hole to 5830' and run open hole logs. If appears productive, will run 5830' of 5 1/2" 17# new casing and bring cement up across Fruitland formation. Will perforate and stimulate as required. Minimum specifications for pressure control equipment which is to be used:

FORMATION	ESTIMATED TOPS	CONTENT
Fruitland	285	Water & Gas
Picture Cliff	793	Water & Gas
Cliff House	1815	Water
Point Lookout	3345	Water
Mancos	3691	Water
Gallup	4599	Oil & Gas
Greenhorn	5375	Gas
Graneros-Dakota	5438	Gas

IN ABOVE SPACE DESCRIBE PROPOSED PROGRAM: If proposal is to deepen or plug back, give data on present productive zone and proposed new productive zone. If proposal is to drill or deepen directionally, give pertinent data on subsurface locations and measured and true-vertical depths. Give blowout preventer program, if any.

24.

SIGNED

E. E. Fournier

TITLE

Partner

(This space for Federal or State office use)

PERMIT NO.

APPROVAL DATE

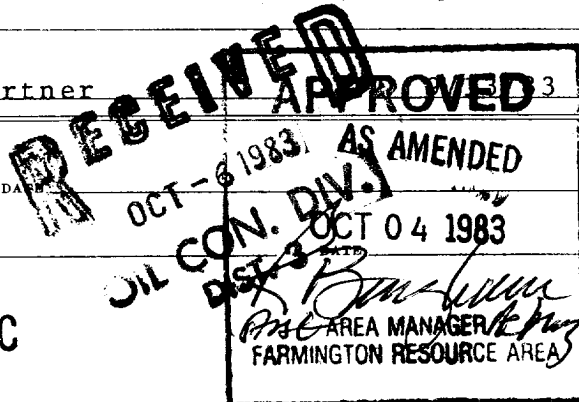
APPROVED BY

TITLE

CONDITIONS OF APPROVAL, IF ANY:

ch

NMOCC



All distances must be from the outer boundaries of the Section.

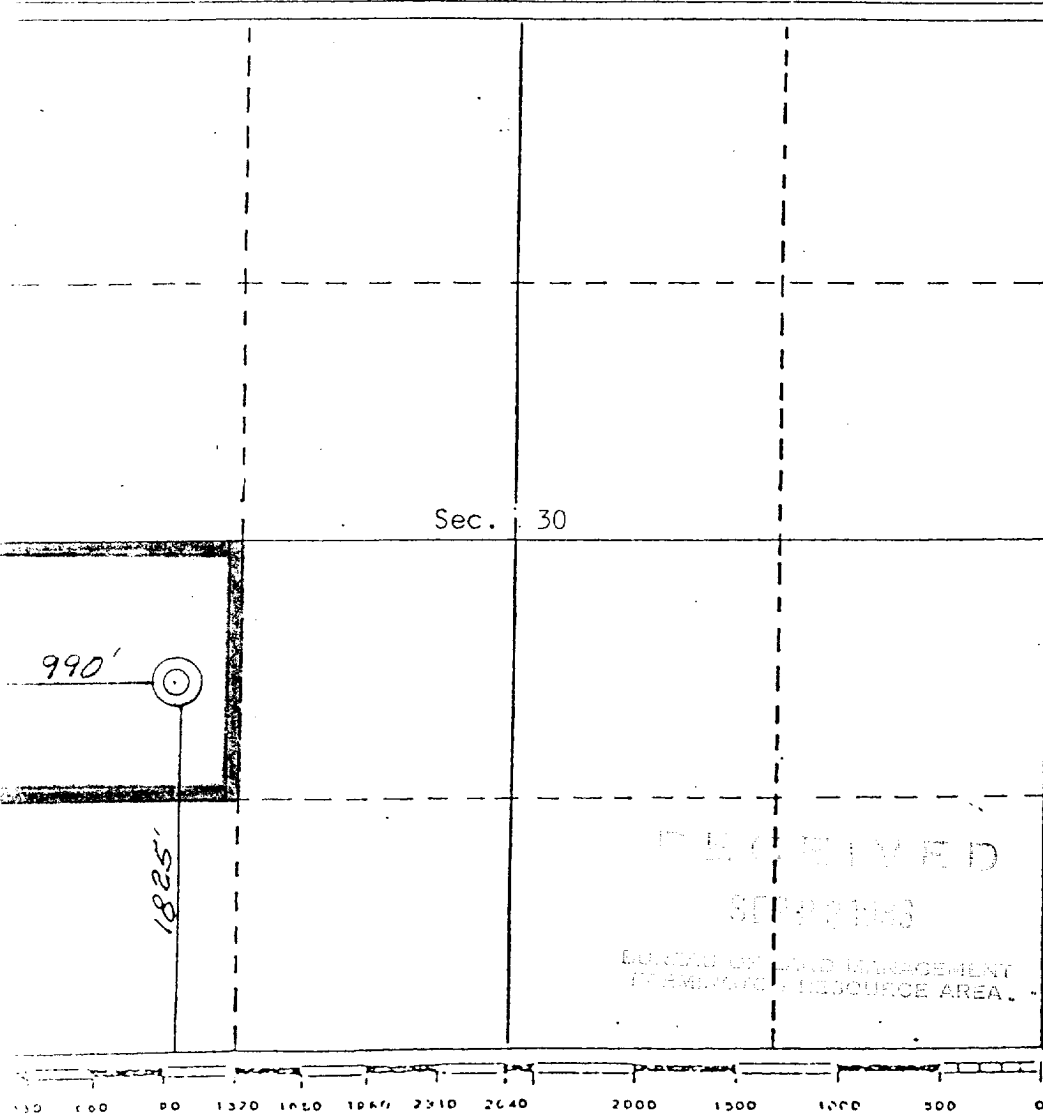
Lease			Well No.		
LOBO PRODUCTION			MESA TWIN MOUNDS		
Section	Township	Range	County		
L	30	30 NORTH	14 WEST SAN JUAN		
Well Location of Well:					
1825 feet from the SOUTH line and		990 feet from the WEST line			
Land Level Elev.	Producing Formation	Pool		Dedicated Acreage:	
5390	Gallup	Wildcat Gallup		40 Acres	

- Outline the acreage dedicated to the subject well by colored pencil or hatchure marks on the plat below.
- If more than one lease is dedicated to the well, outline each and identify the ownership thereof (both as to working interest and royalty).
- If more than one lease of different ownership is dedicated to the well, have the interests of all owners consolidated by communitization, unitization, force-pooling, etc?

☐ Yes ☐ No If answer is "yes," type of consolidation _____

If answer is "no," list the owners and tract descriptions which have actually been consolidated. (Use reverse side of this form if necessary.)

No allowable will be assigned to the well until all interests have been consolidated (by communitization, unitization, forced-pooling, or otherwise) or until a non-standard unit, eliminating such interests, has been approved by the Division



CERTIFICATION

I hereby certify that the information contained herein is true and complete to the best of my knowledge and belief.

Gary E. Roberts

Name

Gary E. Roberts

Position

Partner

Company

LOBO PRODUCTION

Date

9-28-83

I hereby certify that the well location shown on this plat was plotted from field notes of actual surveys made by me or under my supervision, and that the same is true and correct to the best of my knowledge and belief.

26 September 1983

Date Certified

Registered Professional Engineer

and/or Land Surveyor

Curtis C. Stocking
C. STOCKING

Certificate No.

5980

All distances must be from the outer boundaries of the Section.

Operator LOBO PRODUCTION		Lease MESA TWIN MOUNDS		Well No. 2
Section Letter L	Section 30	Township 30 NORTH	Range 14 WEST	County SAN JUAN
Well Footage Location of Well: 1825 feet from the SOUTH line and 990 feet from the WEST line				
Land Level Elev. 5390	Producing Formation Dakota	Pool Basin Dakota	Dedicated Acreage: 320	Acre

1. Outline the acreage dedicated to the subject well by colored pencil or hatchure marks on the plat below.
2. If more than one lease is dedicated to the well, outline each and identify the ownership thereof (both as to working interest and royalty).
3. If more than one lease of different ownership is dedicated to the well, have the interests of all owners been consolidated by communitization, unitization, force-pooling, etc?

☐ Yes ☐ No If answer is "yes," type of consolidation _____

If answer is "no," list the owners and tract descriptions which have actually been consolidated. (Use reverse side of this form if necessary.) _____

No allowable will be assigned to the well until all interests have been consolidated (by communitization, unitization, forced-pooling, or otherwise) or until a non-standard unit, eliminating such interests, has been approved by the Division

Sec. 30

990'

1825'

CERTIFICATION

I hereby certify that the information contained herein is true and complete to the best of my knowledge and belief.

Gary E. Roberts

Name

Gary E. Roberts

Position

Partner

Company

LOBO PRODUCTION

Date

9-28-83

I hereby certify that the well location shown on this plat was plotted from field notes of actual surveys made by me or under my supervision, and that the same is true and correct to the best of my knowledge and belief.

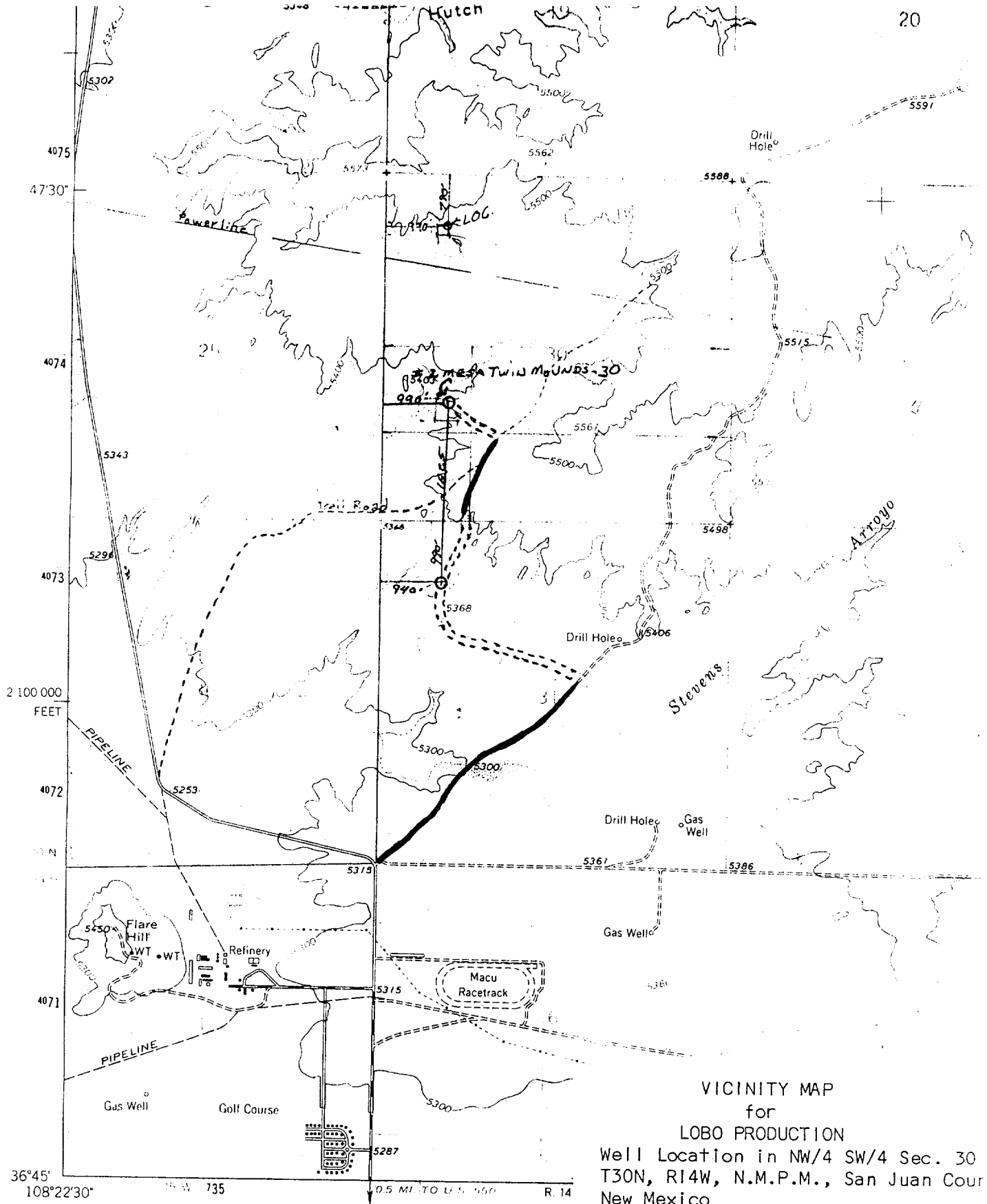
26 September 1983

Date Executed

Registered Professional Engineer and/or Land Surveyor

Curtis C. Stocking

Certificate No.
5980



VICINITY MAP
for
LOBO PRODUCTION
Well Location in NW/4 SW/4 Sec. 30
T30N, R14W, N.M.P.M., San Juan Cour
New Mexico
2 Mesa Twin Mounds-30
Scale: 1"=2000'

Mapped, edited, and published by the Geological Survey
Control by USGS, USC&GS, and U.S. Bureau of Reclamation
Topography by photogrammetric methods from aerial
photographs taken 1958 and 1962. Field checked 1963
Polyconic projection, 1927 North American datum
10,000-foot grid based on New Mexico coordinate system, west zone
1000-meter Universal Transverse Mercator grid ticks,
zone 12, shown in blue
Fine red dashed lines indicate selected fence lines

