

NO. OF COPIES RECEIVED	
DISTRIBUTION	
SANTA FE	
FILE	
U.S.G.S.	
LAND OFFICE	
OPERATOR	

NEW MEXICO OIL CONSERVATION COMMISSION

30-045-25823

Form C-101
Revised 1-1-65

5A. Indicate Type of Lease STATE <input checked="" type="checkbox"/> FEE <input type="checkbox"/>
5. State Oil & Gas Lease No. E-5316

APPLICATION FOR PERMIT TO DRILL, DEEPEN, OR PLUG BACK

1a. Type of Work b. Type of Well DRILL <input checked="" type="checkbox"/> DEEPEN <input type="checkbox"/> PLUG BACK <input type="checkbox"/> OIL WELL <input type="checkbox"/> GAS WELL <input checked="" type="checkbox"/> OTHER <input type="checkbox"/> SINGLE ZONE <input checked="" type="checkbox"/> MULTIPLE ZONE <input type="checkbox"/>		7. Unit Agreement Name	
2. Name of Operator Tenneco Oil Company		8. Farm or Lease Name Texas Company Com	
3. Address of Operator P.O. Box 3249, Englewood, CO 80155		9. Well No. 1	
4. Location of Well UNIT LETTER F LOCATED 1690 FEET FROM THE North LINE AND 1590 FEET FROM THE West LINE OF SEC. 32 TWP. 30N RGE. 10W NMPM		10. Field and Pool, or Wildcat Basin Dakota	
		12. County San Juan	
		19. Proposed Depth 7040'	
		19A. Formation Dakota	
		20. Rotary or C.T. Rotary	
21. Elevations (Show whether DF, RT, etc.) 6012 GR		21A. Kind & Status Plug. Bond General	
		21B. Drilling Contractor Four Corners	
		22. Approx. Date Work will start ASAP	

23.

PROPOSED CASING AND CEMENT PROGRAM

SIZE OF HOLE	SIZE OF CASING	WEIGHT PER FOOT	SETTING DEPTH	SACKS OF CEMENT	EST. TOP
12-1/4"	9-5/8"	36#	± 300'	Circ cement to surface	
8-3/4"	7"	23#	± 4660'	Circ cement to surface - 2 stages	
6-1/4"	4-1/2"	10.5, 11.6#	± 7040'	Circ cement to liner top	

See Attached

Gas is dedicated

RECEIVED

OCT 24 1983

OIL CON. DIV.
DIST. 3

IN ABOVE SPACE DESCRIBE PROPOSED PROGRAM: IF PROPOSAL IS TO DEEPEN OR PLUG BACK, GIVE DATA ON PRESENT PRODUCTIVE ZONE AND PROPOSED NEW PRODUCTIVE ZONE. GIVE BLOWOUT PREVENTER PROGRAM, IF ANY.

I hereby certify that the information above is true and complete to the best of my knowledge and belief.

Signed Denise Wilson Title Production Analyst Date October 18, 1983

(This space for State Use)

APPROVED BY John D. [Signature] TITLE SUPERVISOR DATE OCT 24 1983

CONDITIONS OF APPROVAL, IF ANY:

OIL CONSERVATION DIVISION

P. O. BOX 2088

SANTA FE, NEW MEXICO 87501

Form C-107
Revised 10-1-78

STATE OF NEW MEXICO

ENERGY AND MINERALS DEPARTMENT

All distances must be from the outer boundaries of the Section.

Operator Tenneco Oil Company		Lease Texas Company Com		Well No. 1
Unit Letter F	Section 32	Township 30N	Range 10W	County San Juan
Actual Footage Location of Well: 1690 feet from the North line and 1590 feet from the West line				
Ground Level Elev. 6012	Producing Formation Dakota	Pool Basin Dakota	Dedicated Acreage: 320 Acres	

1. Outline the acreage dedicated to the subject well by colored pencil or hatchure marks on the plat below.

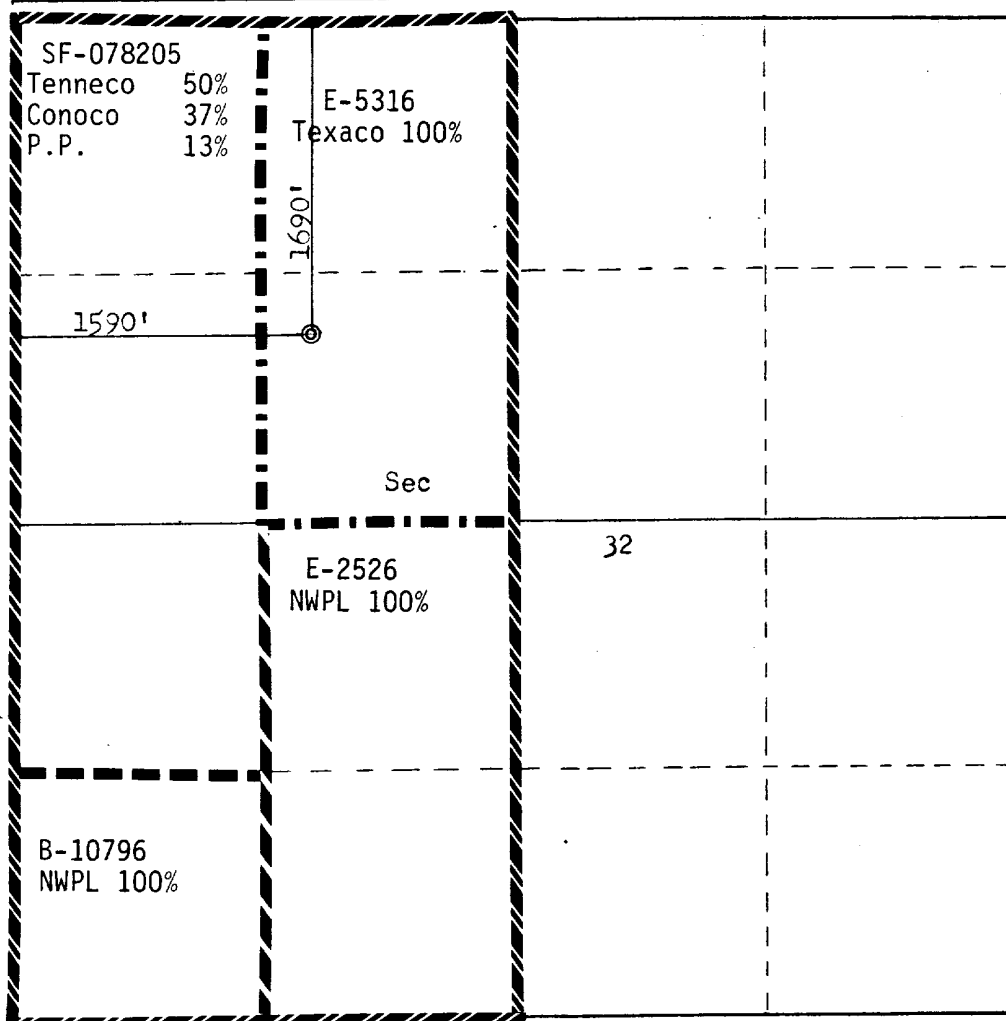
2. If more than one lease is dedicated to the well, outline each and identify the ownership thereof (both as to working interest and royalty).

3. If more than one lease of different ownership is dedicated to the well, have the interests of all owners been consolidated by communitization, unitization, force-pooling, etc?

☒ Yes ☐ No If answer is "yes," type of consolidation communitization

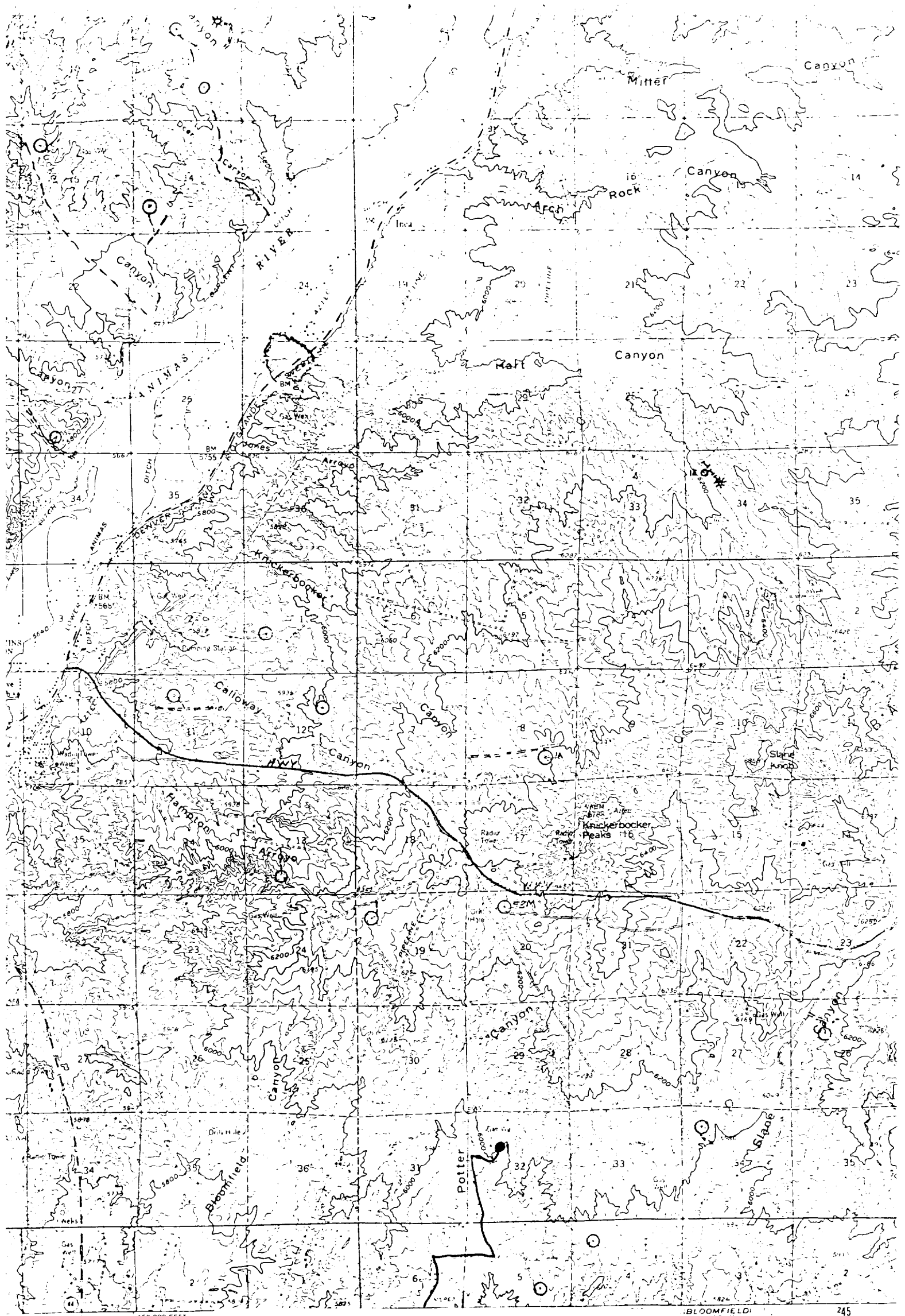
If answer is "no," list the owners and tract descriptions which have actually been consolidated. (Use reverse side of this form if necessary.) _____

No allowable will be assigned to the well until all interests have been consolidated (by communitization, unitization, forced-pooling, or otherwise) or until a non-standard unit, eliminating such interests, has been approved by the Commission.



Scale: 1"=1000'

CERTIFICATION	
I hereby certify that the information contained herein is true and complete to the best of my knowledge and belief.	
Name	<i>Denise Wilson</i>
Position	Denise Wilson
Company	Production Analyst
Date	Tenneco Oil Company
Date	October 17, 1983
I hereby certify that the well location shown on this plat was plotted from field notes of actual surveys made by me or under my supervision, and that the same is true and correct to the best of my knowledge and belief.	
Date Surveyed	September 11, 1983
Registered Professional Engineer and Land Surveyor	<i>Fred B. Kerr Jr.</i>
Certificate No.	3950



1460 000 FEET
CUBA 90 MI
and published by the Geological Survey

1965. *Methods for aerial*
1969.

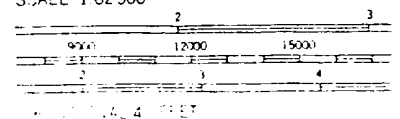
1927 - 1928 - 1929 - 1930 - 1931 - 1932 - 1933 - 1934 - 1935 - 1936 - 1937 - 1938 - 1939 - 1940 - 1941 - 1942 - 1943 - 1944 - 1945 - 1946 - 1947 - 1948 - 1949 - 1950 - 1951 - 1952 - 1953 - 1954 - 1955 - 1956 - 1957 - 1958 - 1959 - 1960 - 1961 - 1962 - 1963 - 1964 - 1965 - 1966 - 1967 - 1968 - 1969 - 1970 - 1971 - 1972 - 1973 - 1974 - 1975 - 1976 - 1977 - 1978 - 1979 - 1980 - 1981 - 1982 - 1983 - 1984 - 1985 - 1986 - 1987 - 1988 - 1989 - 1990 - 1991 - 1992 - 1993 - 1994 - 1995 - 1996 - 1997 - 1998 - 1999 - 2000 - 2001 - 2002 - 2003 - 2004 - 2005 - 2006 - 2007 - 2008 - 2009 - 2010 - 2011 - 2012 - 2013 - 2014 - 2015 - 2016 - 2017 - 2018 - 2019 - 2020 - 2021 - 2022 - 2023 - 2024 - 2025 - 2026 - 2027 - 2028 - 2029 - 2030 - 2031 - 2032 - 2033 - 2034 - 2035 - 2036 - 2037 - 2038 - 2039 - 2040 - 2041 - 2042 - 2043 - 2044 - 2045 - 2046 - 2047 - 2048 - 2049 - 2050 - 2051 - 2052 - 2053 - 2054 - 2055 - 2056 - 2057 - 2058 - 2059 - 2060 - 2061 - 2062 - 2063 - 2064 - 2065 - 2066 - 2067 - 2068 - 2069 - 2070 - 2071 - 2072 - 2073 - 2074 - 2075 - 2076 - 2077 - 2078 - 2079 - 2080 - 2081 - 2082 - 2083 - 2084 - 2085 - 2086 - 2087 - 2088 - 2089 - 2090 - 2091 - 2092 - 2093 - 2094 - 2095 - 2096 - 2097 - 2098 - 2099 - 2100 - 2101 - 2102 - 2103 - 2104 - 2105 - 2106 - 2107 - 2108 - 2109 - 2110 - 2111 - 2112 - 2113 - 2114 - 2115 - 2116 - 2117 - 2118 - 2119 - 2120 - 2121 - 2122 - 2123 - 2124 - 2125 - 2126 - 2127 - 2128 - 2129 - 2130 - 2131 - 2132 - 2133 - 2134 - 2135 - 2136 - 2137 - 2138 - 2139 - 2140 - 2141 - 2142 - 2143 - 2144 - 2145 - 2146 - 2147 - 2148 - 2149 - 2150 - 2151 - 2152 - 2153 - 2154 - 2155 - 2156 - 2157 - 2158 - 2159 - 2160 - 2161 - 2162 - 2163 - 2164 - 2165 - 2166 - 2167 - 2168 - 2169 - 2170 - 2171 - 2172 - 2173 - 2174 - 2175 - 2176 - 2177 - 2178 - 2179 - 2180 - 2181 - 2182 - 2183 - 2184 - 2185 - 2186 - 2187 - 2188 - 2189 - 2190 - 2191 - 2192 - 2193 - 2194 - 2195 - 2196 - 2197 - 2198 - 2199 - 2200 - 2201 - 2202 - 2203 - 2204 - 2205 - 2206 - 2207 - 2208 - 2209 - 2210 - 2211 - 2212 - 2213 - 2214 - 2215 - 2216 - 2217 - 2218 - 2219 - 2220 - 2221 - 2222 - 2223 - 2224 - 2225 - 2226 - 2227 - 2228 - 2229 - 2230 - 2231 - 2232 - 2233 - 2234 - 2235 - 2236 - 2237 - 2238 - 2239 - 2240 - 2241 - 2242 - 2243 - 2244 - 2245 - 2246 - 2247 - 2248 - 2249 - 2250 - 2251 - 2252 - 2253 - 2254 - 2255 - 2256 - 2257 - 2258 - 2259 - 2260 - 2261 - 2262 - 2263 - 2264 - 2265 - 2266 - 2267 - 2268 - 2269 - 2270 - 2271 - 2272 - 2273 - 2274 - 2275 - 2276 - 2277 - 2278 - 2279 - 2280 - 2281 - 2282 - 2283 - 2284 - 2285 - 2286 - 2287 - 2288 - 2289 - 2290 - 2291 - 2292 - 2293 - 2294 - 2295 - 2296 - 2297 - 2298 - 2299 - 2300 - 2301 - 2302 - 2303 - 2304 - 2305 - 2306 - 2307 - 2308 - 2309 - 2310 - 2311 - 2312 - 2313 - 2314 - 2315 - 2316 - 2317 - 2318 - 2319 - 2320 - 2321 - 2322 - 2323 - 2324 - 2325 - 2326 - 2327 - 2328 - 2329 - 2330 - 2331 - 2332 - 2333 - 2334 - 2335 - 2336 - 2337 - 2338 - 2339 - 2340 - 2341 - 2342 - 2343 - 2344 - 2345 - 2346 - 2347 - 2348 - 2349 - 2350 - 2351 - 2352 - 2353 - 2354 - 2355 - 2356 - 2357 - 2358 - 2359 - 2360 - 2361 - 2362 - 2363 - 2364 - 2365 - 2366 - 2367 - 2368 - 2369 - 2370 - 2371 - 2372 - 2373 - 2374 - 2375 - 2376 - 2377 - 2378 - 2379 - 2380 - 2381 - 2382 - 2383 - 2384 - 2385 - 2386 - 2387 - 2388 - 2389 - 2390 - 2391 - 2392 - 2393 - 2394 - 2395 - 2396 - 2397 - 2398 - 2399 - 2400 - 2401 - 2402 - 2403 - 2404 - 2405 - 2406 - 2407 - 2408 - 2409 - 2410 - 2411 - 2412 - 2413 - 2414 - 2415 - 2416 - 2417 - 2418 - 2419 - 2420 - 2421 - 2422 - 2423 - 2424 - 2425 - 2426 - 2427 - 2428 - 2429 - 2430 - 2431 - 2432 - 2433 - 2434 - 2435 - 2436 - 2437 - 2438 - 2439 - 2440 - 2441 - 2442 - 2443 - 2444 - 2445 - 2446 - 2447 - 2448 - 2449 - 2450 - 2451 - 2452 - 2453 - 2454 - 2455 - 2456 - 2457 - 2458 - 2459 - 2460 - 2461 - 2462 - 2463 - 2464 - 2465 - 2466 - 2467 - 2468 - 2469 - 2470 - 2471 - 2472 - 2473 - 2474 - 2475 - 2476 - 2477 - 2478 - 2479 - 2480 - 2481 - 2482 - 2483 - 2484 - 2485 - 2486 - 2487 - 2488 - 2489 - 2490 - 2491 - 2492 - 2493 - 2494 - 2495 - 2496 - 2497 - 2498 - 2499 - 2500 - 2501 - 2502 - 2503 - 2504 - 2505 - 2506 - 2507 - 2508 - 2509 - 2510 - 2511 - 2512 - 2513 - 2514 - 2515 - 2516 - 2517 - 2518 - 2519 - 2520 - 2521 - 2522 - 2523 - 2524 - 2525 - 2526 - 2527 - 2528 - 2529 - 2530 - 2531 - 2532 - 2533 - 2534 - 2535 - 2536 - 2537 - 2538 - 2539 - 2540 - 2541 - 2542 - 2543 - 2544 - 2545 - 2546 - 2547 - 2548 - 2549 - 2550 - 2551 - 2552 - 2553 - 2554 - 2555 - 2556 - 2557 - 2558 - 2559 - 2560 - 2561 - 2562 - 2563 - 2564 - 2565 - 2566 - 2567 - 2568 - 2569 - 2570 - 2571 - 2572 - 2573 - 2574 - 2575 - 2576 - 2577 - 2578 - 2579 - 2580 - 2581 - 2582 - 2583 - 2584 - 2585 - 2586 - 2587 - 2588 - 2589 - 2590 - 2591 - 2592 - 2593 - 2594 - 2595 - 2596 - 2597 - 2598 - 2599 - 2600 - 2601 - 2602 - 2603 - 2604 - 2605 - 2606 - 2607 - 2608 - 26

Journal of Management Education 32(10):1139-1152

[illegible]

Vicinity Map for
Tenneco Oil Company #1 Texas Company Com
1690'FNL 1590'FWL Sec 32-30N-10W
San Juan County New Mexico

BLOOMFIELD
4457 III
SCALE 1:62500



44 55

UTM GRID AND TRUE MAGNETIC NORTH
DECLINATION AT CENTER OF SHEET

FOR SALE BY U. S. GEOLOGICAL SURVEY, DENVER, COLORADO 80219 OR WASHING