

UNITED STATES
DEPARTMENT OF THE INTERIOR
GEOLOGICAL SURVEY

APPLICATION FOR PERMIT TO DRILL, DEEPEN, OR PLUG BACK

1a. TYPE OF WORK

DRILL ☒

DEEPEN ☐

PLUG BACK ☐

b. TYPE OF WELL

OIL WELL ☒

GAS WELL ☐

OTHER ☐

SINGLE ZONE ☒

MULTIPLE ZONE ☐

2. NAME OF OPERATOR

Union Texas Petroleum Corporation

3. ADDRESS OF OPERATOR

P.O. Box 1290, Farmington, New Mexico 87499

4. LOCATION OF WELL (Report location clearly and in accordance with any State requirements.)

At surface 1864 ft./North; 1447 ft./West lines

At proposed prod. zone Same as above

14. DISTANCE IN MILES AND DIRECTION FROM NEAREST TOWN OR POST

2 miles northeast of Farmington, New Mexico

15. DISTANCE FROM PROPOSED* LOCATION TO NEAREST PROPERTY OR LEASE LINE, FT.

776 ft.

(Also to nearest drlg. unit line, if any) 127 ft.

18. DISTANCE FROM PROPOSED LOCATION* TO NEAREST WELL, DRILLING, COMPLETED, OR APPLIED FOR, ON THIS LEASE, FT.

2371 ft.

21. ELEVATIONS (Show whether DF, RT, GR, etc.)

5726 GR

23. PROPOSED CASING AND CEMENTING PROGRAM

SIZE OF HOLE	SIZE OF CASING	WEIGHT PER FOOT	SETTING DEPTH	QUANTITY OF CEMENT
12-1/4"	8-5/8"	24.0#, J-55	300 feet	240 cu.ft. (circulated)
7-7/8"	4-1/2"	11.6#, K-55	6470 feet	2600 cu.ft. (circulated)

We desire to drill 12-1/4" surface hole to approx. 300 ft. using natural mud as a circulating medium. Run new 8-5/8", 24.0#, J-55 casing to TD. Cement with approx. 240 cu.ft. C1 "B" cement circulated to surface. Pressure test the casing to 800 PSIG. Drill 7-7/8" hole to TD of approx 6470 ft. using a permaloid, nondispersed mud as the circulating medium. Log the well. Run new 4-1/2", 11.6#, K-55 casing to TD with DV tool at approx. 2150 ft. Cement first stage with approx. 1300 cu. ft. of 65/35/6 followed by 100 cu.ft. 50/50 POZ mix. Cement second stage with approx. 1200 cu.ft. of 65/35/12 POZ circulated to surface. Drill out the DV tool and pressure up and test. If the Gallup is commercial, complete as Gallup single. If the Gallup is non-commercial, squeeze the Gallup, perforate, frac and test the Dakota zone and complete as a Dakota single. Clean the well up. Run new 2-3/8" EUE 4.7# J-55 to the completed zone. Set a pumping unit and tanks. Connect the well to a Gathering System. The gas from this well has been dedicated to a transporter.

NOTE: Actual cement volumes to be calculated from Caliper Log.

IN ABOVE SPACE DESCRIBE PROPOSED PROGRAM: If proposal is to deepen or plug back, give data on present productive zone and proposed new productive zone. If proposal is to drill or deepen directionally, give pertinent data on subsurface locations and measured and true vertical depths. Give blowout preventer program, if any.

24.

SIGNED

P. D. Motto

Area Operations Manager

(This space for Federal or State office use)

PERMIT NO.

APPROVAL DATE

APPROVED BY

CONDITIONS OF APPROVAL, IF ANY:

NSL 1763

NMOCC

FARMINGTON RESOURCE AREA

30-045-25845
SF 078214

5. LEASE DESIGNATION AND SERIAL NO.

SF 078214

6. IF INDIAN ALLOTTEE OR TRIBE NAME

NOV 18 1983

7. UNIT AGREEMENT NAME

OIL CON. DIV.

8. FARM OR LEASE NAME

McCord

DIST. 3

9. WELL NO.

10 E

10. FIELD AND POOL, OR WILDCAT

Wildcat Gallup/Basin Dakota

11. SEC., T., R., M., OR BLK.

AND SURVEY OR AREA

Section 33, T30N-13W NMPM

12. COUNTY OR PARISH

San Juan

13. STATE

New Mexico

17. NO. OF ACRES ASSIGNED TO THIS WELL

Gallup: 40.00 Dakota 320.00

20. ROTARY OR CABLE TOOLS

Rotary

22. APPROX. DATE WORK WILL START*

November 10, 1983

October 7, 1983
APPROVED
AS AMENDED
NOV 16 1983
K. B. Buchanan
AREA MANAGER
FARMINGTON RESOURCE AREA

OIL CONSERVATION DIVISION

STATE OF NEW MEXICO
ENERGY AND MINERALS DEPARTMENTP. O. BOX 2088
SANTA FE, NEW MEXICO 87501

Form C-102

Revised 10-77

All distances must be from the outer boundaries of the Section.

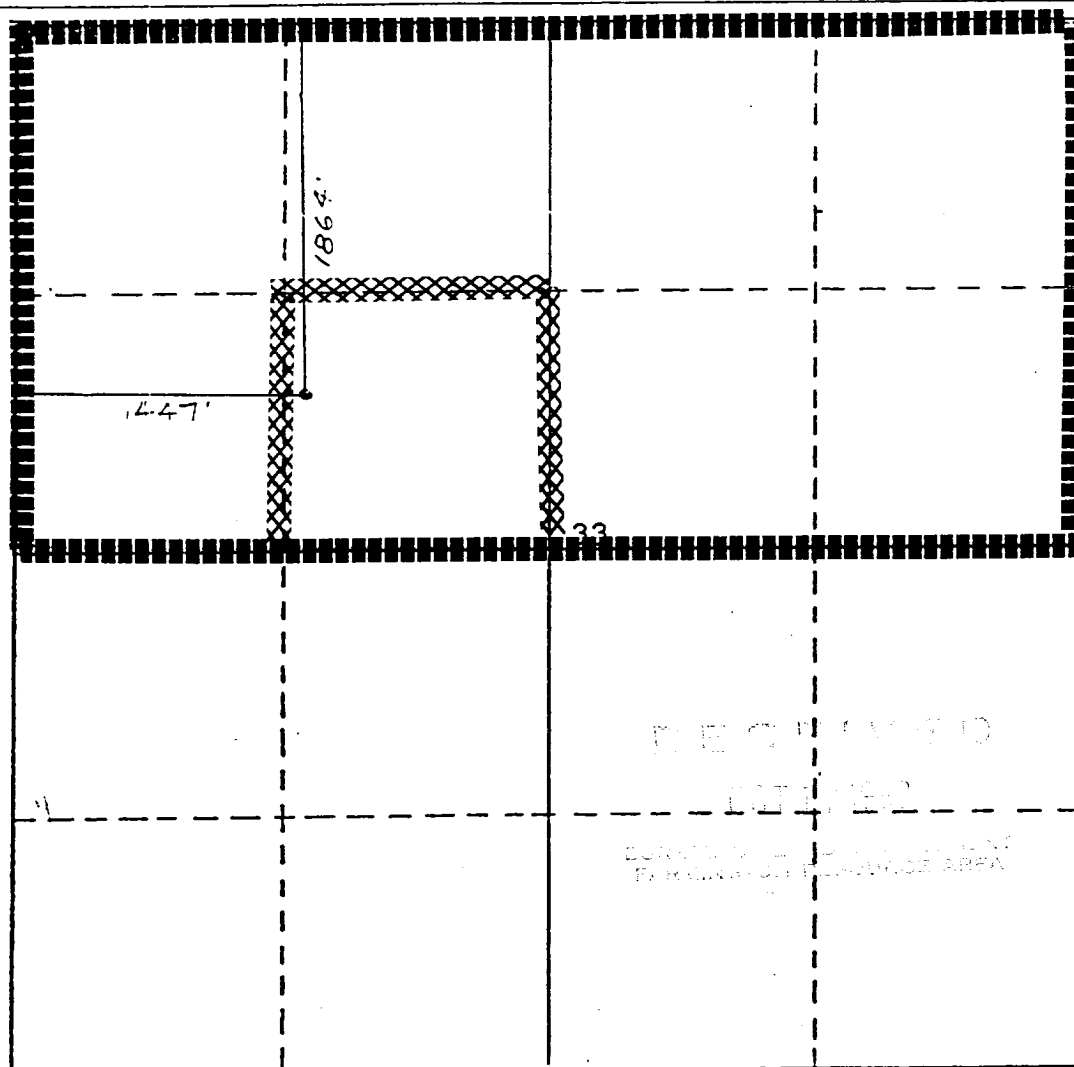
Operator UNION TEXAS PETROLEUM CORPORATION			Lease MCCORD		Well No. NOV 10E983
Unit Letter F	Section 33	Township 30 NORTH	Range 13 WEST	County SAN JUAN	
Actual Footage Location of Well: 1864 feet from the NORTH line and 1447 feet from the WEST line					
Ground Level Elev. 5726	Producing Formation Gallup or Dakota	Pool Flora Vista Gallup Ext. or Basin Dakota		Dedicated Acreage: Gallup: SENW 40.00 Dakota: N1/2 320.00	

1. Outline the acreage dedicated to the subject well by colored pencil or hatchure marks on the plat below.
2. If more than one lease is dedicated to the well, outline each and identify the ownership thereof (both as to working interest and royalty).
3. If more than one lease of different ownership is dedicated to the well, have the interests of all owners been consolidated by communitization, unitization, force-pooling, etc?

☐ Yes ☐ No If answer is "yes," type of consolidation _____

If answer is "no," list the owners and tract descriptions which have actually been consolidated. (Use reverse side of this form if necessary.) _____

No allowable will be assigned to the well until all interests have been consolidated (by communitization, unitization, forced-pooling, or otherwise) or until a non-standard unit, eliminating such interests, has been approved by the Division



CERTIFICATION

I hereby certify that the information contained herein is true and complete to the best of my knowledge and belief.

Name

Rudy D. Motto

Position

Area Operations Manager

Company

Union Texas Petroleum Corp.

Date

September 26, 1983

I hereby certify that the well location shown on this plat was plotted from field notes of actual surveys made by me or under my supervision and that the same is true and correct to the best of my knowledge and belief.

Date

 Registered Professional Engineer
and/or Land Surveyor

Michael Daly