

UNITED STATES
DEPARTMENT OF THE INTERIOR
GEOLOGICAL SURVEY

APPLICATION FOR PERMIT TO DRILL, DEEPEN, OR PLUG BACK

1a. TYPE OF WORK

DRILL ☒DEEPEN ☐PLUG BACK ☐

b. TYPE OF WELL

OIL
WELL ☐GAS
WELL ☒

OTHER

SINGLE
ZONE ☒MULTIPLE
ZONE ☐

2. NAME OF OPERATOR

Tenneco Oil Company

3. ADDRESS OF OPERATOR

P.O. Box 3249, Englewood, CO 80155

4. LOCATION OF WELL (Report location clearly and in accordance with any State requirements.)

At surface

480' FSL, 340' FEL

At proposed prod. zone

14. DISTANCE IN MILES AND DIRECTION FROM NEAREST TOWN OR POST OFFICE

8 mi NE of Blanco, NM

15. DISTANCE FROM PROPOSED*

LOCATION TO NEAREST
PROPERTY OR LEASE LINE, FT.
(Also to nearest drlg. unit line, if any)

340'

18. DISTANCE FROM PROPOSED LOCATION*
TO NEAREST WELL, DRILLING, COMPLETED,
OR APPLIED FOR, ON THIS LEASE, FT.

21. ELEVATIONS (Show whether DF, RT, GR, etc.)

5866' GR

23. PROPOSED CASING AND CEMENTING PROGRAM

DRILLING OPERATIONS AUTHORIZED ARE
SUBJECT TO COMPLIANCE WITH ATTACHED

"GENERAL REQUIREMENTS"

22. APPROX. DATE WORK WILL START*

ASAP after 6/30/84

This action is subject to administrative
appeal pursuant to 30 CFR 290.

SIZE OF HOLE	SIZE OF CASING	WEIGHT PER FOOT	SETTING DEPTH	QUANTITY OF CEMENT
12-1/4"	9-5/8"	36#	+ 300'	Circulate to surface
8-3/4"	7"	23#	+ 3130'	Circulate to surface - 2 stages
6-1/4"	4-1/2"	10.5#	+ 7000'	Circulate to liner top
6-1/4"	4-1/2"	11.6#	+ 7110'	Circulate to liner top

See Attached

RECEIVED
AUG 14 1984
OIL CON. DIV.
DIST. 3

IN ABOVE SPACE DESCRIBE PROPOSED PROGRAM: If proposal is to deepen or plug back, give data on present productive zone and proposed new productive zone. If proposal is to drill or deepen directionally, give pertinent data on subsurface locations and measured and true vertical depths. Give blowout preventer program, if any.

24.

SIGNED

TITLE Production Analyst

DATE

(This space for Federal or State office use)

PERMIT NO.

APPROVAL DATE

APPROVED BY

TITLE

CONDITIONS OF APPROVAL, IF ANY:

APPROVED

AS AMENDED

DATE

AUG 10 1984

AREA MANAGER
FARMINGTON RESOURCE AREA

NMOCC

100-44388-33
JAN 10 1960

OIL CONSERVATION DIVISION

P. O. BOX 2088

SANTA FE, NEW MEXICO 87501

Form C-107
Revised 10-1-7STATE OF NEW MEXICO
OIL AND MINERALS DEPARTMENT

All distances must be from the outer boundaries of the Section.

Operator Tenneco Oil Company			Lease Florance		Well No. 11E
Unit Letter P	Section 31	Township 30N	Range 8W	County San Juan	
Actual Footage Location of Well: 480 feet from the South line and 340 feet from the East line					
Ground Level Elev. 5866 Gr. -	Producing Formation Dakota		Pool Basin Dakota		Dedicated Acreage: 297.10 Acres

1. Outline the acreage dedicated to the subject well by colored pencil or hatchure marks on the plat below.
2. If more than one lease is dedicated to the well, outline each and identify the ownership thereof (both as to working interest and royalty).
3. If more than one lease of different ownership is dedicated to the well, have the interests of all owners been consolidated by communitization, unitization, force-pooling, etc?

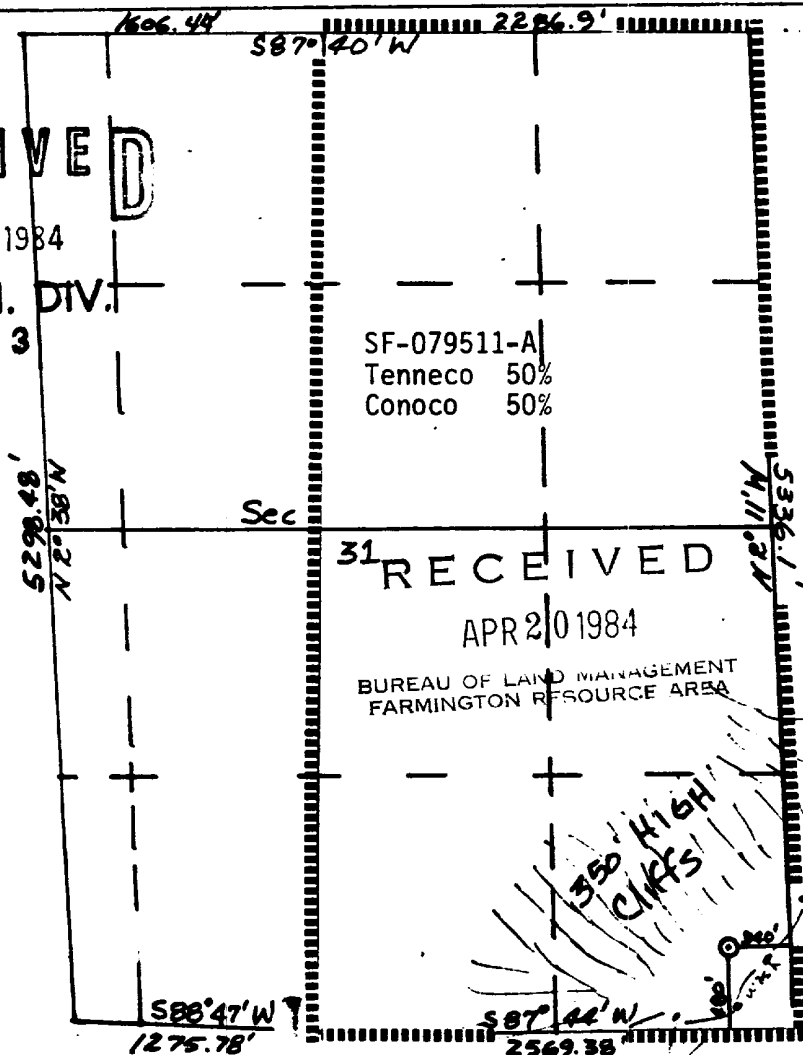
☐ Yes ☐ No If answer is "yes," type of consolidation _____

If answer is "no," list the owners and tract descriptions which have actually been consolidated. (Use reverse side of this form if necessary.) _____

No allowable will be assigned to the well until all interests have been consolidated (by communitization, unitization, forced-pooling, or otherwise) or until a non-standard unit, eliminating such interests, has been approved by the Commission.

RECEIVED

AUG 14 1984

OIL CON. DIV.
DIST. 3

CERTIFICATION

I hereby certify that the information contained herein is true and complete to the best of my knowledge and belief.

Name

John Orr

Position

Production Analyst

Company

Tenneco Oil Company

Date

April 16, 1984

I hereby certify that the well location shown on this plat was plotted from field notes of actual surveys made by me or under my supervision, and that the same is true and correct to the best of my knowledge and belief.

Date Surveyed

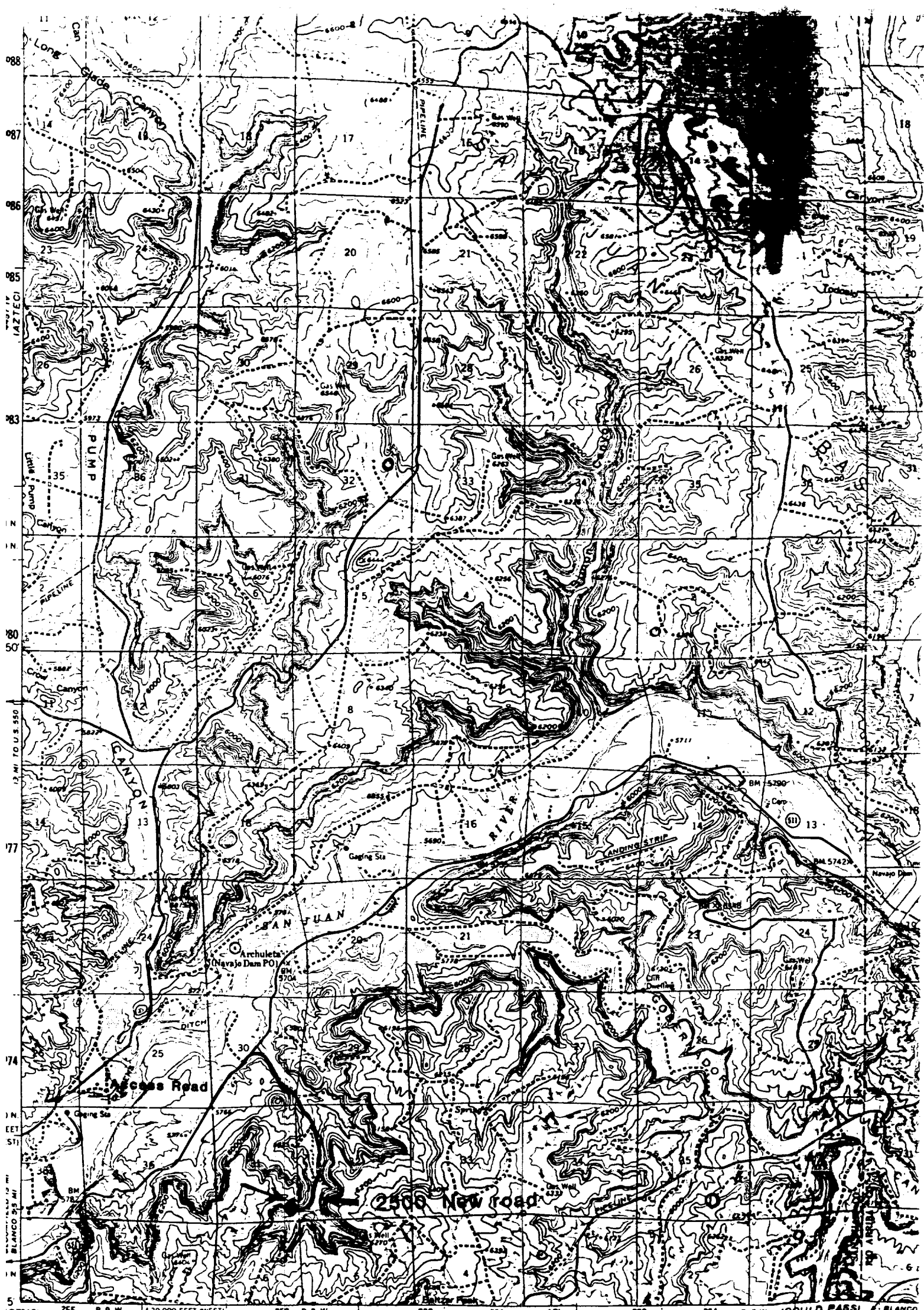
March 14, 1984

Registered Professional Engineer
and Land Surveyor

Fred E. Kerr Jr.

Certificate No. 4222

3950



Mapped, edited, and published by the Geological Survey

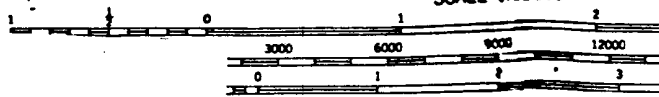
Control by USGS and USC&GS

East half compiled in 1959 from 1:24,000 scale maps dated 1954. West half topography by photogrammetric methods from aerial photographs taken 1955. Field checked 1959.

Polyconic projection. 1927 North American datum. 10,000 foot grid based on New Mexico coordinate system, west and central zones. 1000 meter Universal Transverse Mercator grid ticks, zone 13, shown in blue.

Blue hatching indicates area to be submerged by Navajo Reservoir at elevation 5990 feet. Area covered by dashed light blue pattern is subject to controlled inundation to 6101 feet.

Vicinity Map for
Tenneco Oil Co. 44E Florance
480°FS 340°FE 31-30N-8W
San Juan County New Mexico



CONTOUR INTERVAL 40 FEET
DATUM IS MEAN SEA LEVEL

THIS MAP COMPLIES WITH NATIONAL MAP ACCURACY STANDARDS
GEOLOGICAL SURVEY, DENVER, COLORADO 802
DESCRIBING TOPOGRAPHIC MAPS AND SYMBOLS IS