

NO. OF COPIES RECEIVED	
DISTRIBUTION	
SANTA FE	
FILE	
U.S.G.S.	
LAND OFFICE	
OPERATOR	

NEW MEXICO OIL CONSERVATION COMMISSION

Form O-101
Revised 1-1-65

5A. Indicate Type of Lease
STATE ☐ FEDERAL ☒

5. State Oil & Gas Lease No.

APPLICATION FOR PERMIT TO DRILL, DEEPEN, OR PLUG BACK

1a. Type of Work		7. Unit Agreement Name	
b. Type of Well OIL WELL <input type="checkbox"/> GAS WELL <input checked="" type="checkbox"/> OTHER <input type="checkbox"/>		8. Farm or Lease Name Duff Gas Com	
2. Name of Operator Amoco Production Company		9. Well No. 1E	
3. Address of Operator 501 Airport Drive, Farmington, New Mexico 87401		10. Field and Pool, or Wildcat Basin Dakota	
4. Location of Well UNIT LETTER P LOCATED 1100 FEET FROM THE South LINE AND 1030 FEET FROM THE East LINE OF SEC. 27 TWP. 30N RGE. 12W NMPM		12. County San Juan	
19. Proposed Depth 6445'		19A. Formation Dakota	
20. Rotary or C.T. Rotary		21. Elevations (Show whether DE, RT, etc.) 5609' GR	
21A. Kind & Status Plug. Bond Statewide		21B. Drilling Contractor Unknown	
22. Approx. Date Work will start As soon as permitted			

23.

PROPOSED CASING AND CEMENT PROGRAM

SIZE OF HOLE	SIZE OF CASING	WEIGHT PER FOOT	SETTING DEPTH	SACKS OF CEMENT	EST. TOP
12-1/4"	8-5/8"	24#, K-55	300'	354 ft ³ Class B	Surface
7-7/8"	4-1/2"	10.5#, K-55	6445'	1860 ft ³ Class B	Surface
				50:50 poz X 6% gel	
				Tail-in w/340 Sq. Ft.	
				Class B Neat	

Amoco proposes to drill the above well to further develop the Basin Dakota reservoir. The well will be drilled to the surface casing point using native mud. The well will then be drilled to TD with a low solids nondispersed mud system. Completion design will be based on open hole logs. Copy of all logs will be filed upon completion. Amoco's standard blowout prevention will be employed; see attached drawing for blowout preventer design. Upon completion the well site will be cleaned and the reserve pit filled and leveled. The gas from this well is dedicated to El Paso Natural Gas under contract No. 56,742.

APPROVAL EXPIRES 2-27-85
UNLESS DRILLING IS COMMENCED.
SPUD NOTICE MUST BE SUBMITTED
WITHIN 10 DAYS.

RECEIVED
AUG 27 1984
OIL CON. DIV.
DIST. 3

IN ABOVE SPACE DESCRIBE PROPOSED PROGRAM: IF PROPOSAL IS TO DEEPEN OR PLUG BACK, GIVE DATA ON PRESENT PRODUCTION ZONE AND PROPOSED NEW PRODUCTION ZONE. GIVE BLOWOUT PREVENTER PROGRAM, IF ANY.

I hereby certify that the information above is true and complete to the best of my knowledge and belief.

Signed BDS Shaw Title Adm. Supervisor Date 8/23/84

(This space for State Use)

APPROVED BY [Signature] TITLE SUPERVISOR DISTRICT # 3 DATE AUG 27 1984

CONDITIONS OF APPROVAL, IF ANY:

All distances must be from the outer boundaries of the Section.

Operator AMOCO PRODUCTION COMPANY		Lease DUFF GAS COM 114 C		Well No. 1E
Unit Letter P	Section 27	Township 30N	Range 12W	County San Juan
Actual Footage Location of Well: 1100 feet from the South line and 1030 feet from the East line				
Ground Level Elev. 5609	Producing Formation Dakota	Pool Basin Dakota	Dedicated Acreage: 320 Acres	

1. Outline the acreage dedicated to the subject well by colored pencil or hatchure marks on the plat below.
2. If more than one lease is dedicated to the well, outline each and identify the ownership thereof (both as to working interest and royalty).
3. If more than one lease of different ownership is dedicated to the well, have the interests of all owners been consolidated by communitization, unitization, force-pooling, etc?

☒ Yes ☐ No If answer is "yes," type of consolidation Communitized

If answer is "no," list the owners and tract descriptions which have actually been consolidated. (Use reverse side of this form if necessary.) _____

No allowable will be assigned to the well until all interests have been consolidated (by communitization, unitization, forced-pooling, or otherwise) or until a non-standard unit, eliminating such interests, has been approved by the Commission.

RECEIVED

AUG 27 1984

OIL CON. DIV.
DIST. 3

Sec.

27

1100'

1030'

Scale: 1"=1000'

CERTIFICATION

I hereby certify that the information contained herein is true and complete to the best of my knowledge and belief.

BD Shaw

Name _____

B. D. Shaw

Position

Adm. Supervisor

Company

APC

Date _____

8/22/84

I hereby certify that the well location shown on this plat was plotted from field notes of actual surveys made by me or under my supervision, and that the same is true and correct to the best of my knowledge and belief.

Date Surveyed 12/1/78

August 20, 1984

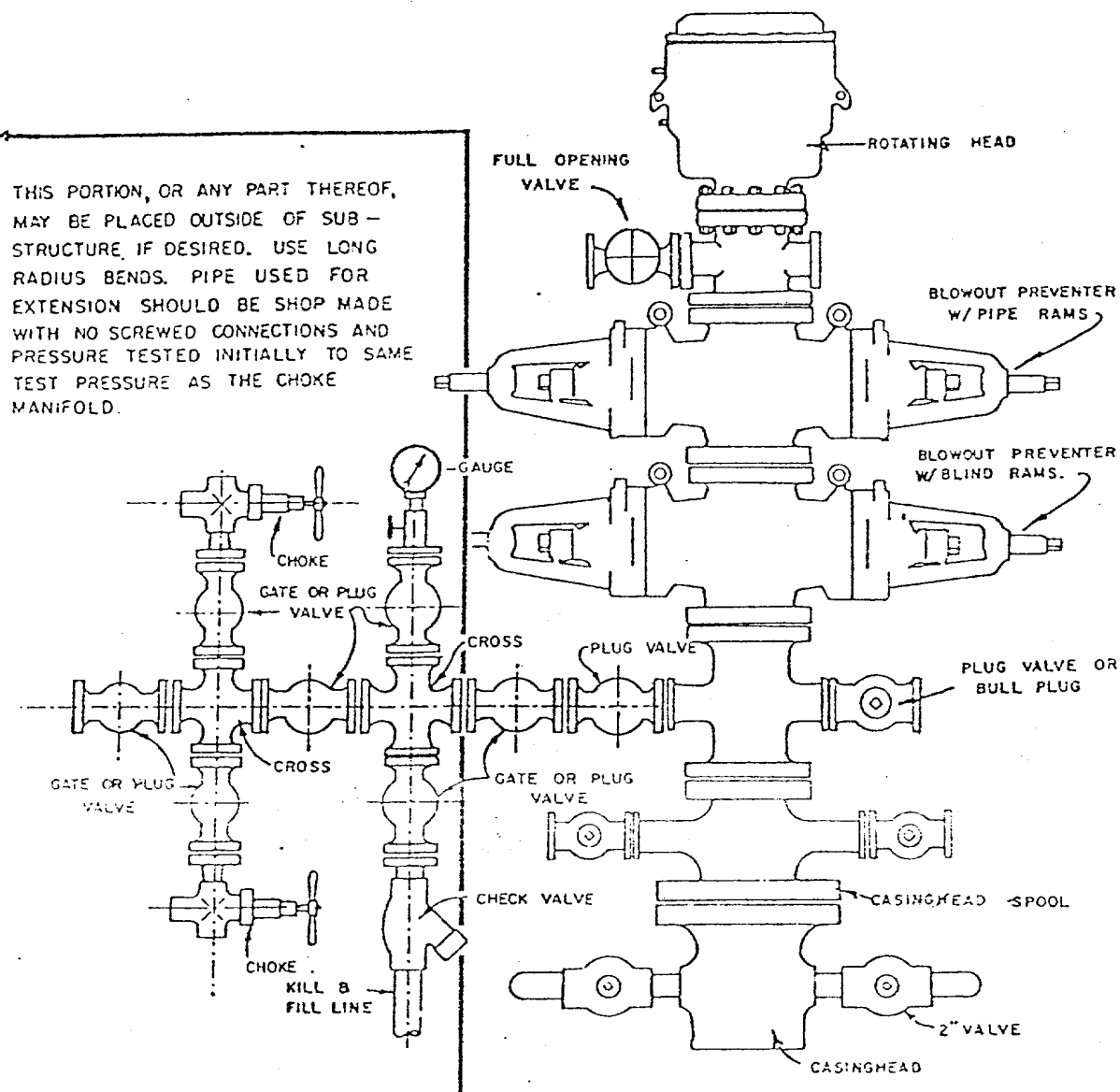
Registered Professional Engineer
and Land Surveyor

Fred. E. Kerr Jr

Certificate No. 4111

3950

1. Blowout Preventers and Master Valve to be fluid operated, and all fittings must be in good condition.
2. Equipment through which bit must pass shall be as large as the inside diameter of the casing that is being drilled through.
3. Nipple above Blowout Preventer shall be same size or larger than BOP being drilled through.
4. All fittings to be flanged.
5. Omsco or comparable safety valve must be available on rig floor at all times with proper connection or sub. The I.D. of safety valve should be as great as I.D. of tool joints of drill pipe, or at least as great as I.D. of drill collars.



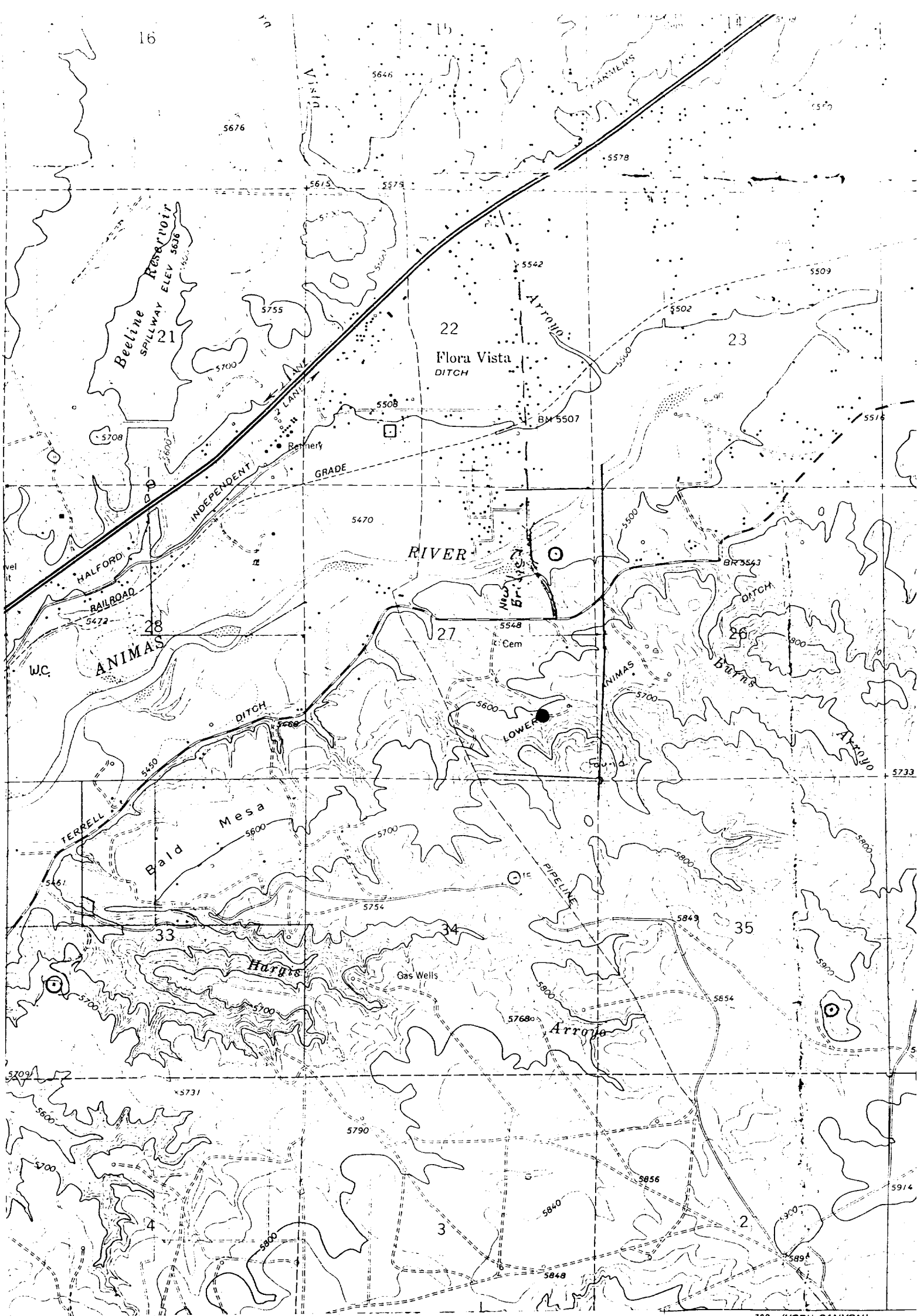
BLOWOUT PREVENTER HOOKUP

API Series # 900

EXHIBIT D-4

OCTOBER 16, 1969

Operation of BOP by closing both pipe and blind rams will be tested each trip or, on long bit runs, pipe rams will be closed once each 24 hours.



Vicinity Map for
 AMOCO PRODUCTION COMPANY #1E DUFF GAS COM "C"
 1100'FSL 1030'FEL Sec. 27-T3ON-R12W
 SAN JUAN COUNTY, NEW MEXICO

by the Geological Survey
 from aerial photographs
 dated 1963.
 American datum
 coordinate system, west zone
 atator grid ticks
 fence lines

1°46' 13"
 31 MILS 231 MILS
 UTM GRID AND 1979 MAGNETIC NORTH
 DECLINATION AT CENTER OF SHEET

