

UNITED STATES
DEPARTMENT OF THE INTERIOR
BUREAU OF LAND MANAGEMENT

SUBMIT IN TRIPPLICATE*
(Other instructions on
reverse side)

Form approved.
Budget Bureau No. 1004-0136
Expires August 31, 1985

APPLICATION FOR PERMIT TO DRILL, DEEPEN, OR PLUG BACK

1a. TYPE OF WORK DRILL ☒ DEEPEN ☐ PLUG BACK ☐

b. TYPE OF WELL
OIL WELL ☐ GAS WELL ☒ OTHER ☐ SINGLE ZONE ☒ MULTIPLE ZONE ☐

2. NAME OF OPERATOR
Amoco Production Company

3. ADDRESS OF OPERATOR
501 Airport Drive, Farmington, New Mexico 87401

4. LOCATION OF WELL (Report location clearly and in accordance with any State requirements.)*
At surface 1770' FNL x 1480' FEL

At proposed prod. zone
Same

14. DISTANCE IN MILES AND DIRECTION FROM NEAREST TOWN OR POST OFFICE*
14 Miles Northeast of Farmington, NM

15. DISTANCE FROM PROPOSED*
LOCATION TO NEAREST
PROPERTY OR LEASE LINE, FT.
(Also to nearest drlg. unit line, if any) 1480'

18. DISTANCE FROM PROPOSED LOCATION*
TO NEAREST WELL, DRILLING, COMPLETED,
OR APPLIED FOR, ON THIS LEASE, FT. 2600' SE

16. NO. OF ACRES IN LEASE
320

19. PROPOSED DEPTH
6595'

17. NO. OF ACRES ASSIGNED
TO THIS WELL 320

20. ROTARY OR CABLE TOOLS
Rotary

21. ELEVATIONS (Show whether DF, RT, GR, etc.)
5772' GR

DRILLING OPERATIONS AUTHORIZED ARE
SUBJECT TO COMPLIANCE WITH ATTACHED

23. "GENERAL REQUIREMENTS" AND CEMENTING PROGRAM

22. APPROX. DATE WORK WILL START*
As soon as permitted

This action is subject to administrative
appeal pursuant to 30 CFR 290.

SIZE OF HOLE	SIZE OF CASING	WEIGHT PER FOOT	SETTING DEPTH	QUANTITY OF CEMENT
12 - 1/4"	8 - 5/8"	24#, J-55	300'	354 Cu. Ft. Class B
7 - 7/8"	4 - 1/2"	10.5#, K-55	6595'	2153 Cu. Ft. Class B
(This string may be two staged but the cement types and volumes remain the same.)				

Amoco proposes to drill the above well to further develop the Basin Dakota reservoir. The well will be drilled to the surface casing point using native mud. The well will then be drilled to TD with a low solids nondispersed mud system. Completion design will be based on open hole logs. Copy of all logs will be filed upon completion. Amoco's standard blowout prevention will be employed; see attached drawing for blowout preventer design. Upon completion the well site will be cleaned and the reserve pit filled and leveled. The gas from this well is dedicated to El Paso Natural Gas under contract No. 56742.

IN ABOVE SPACE DESCRIBE PROPOSED PROGRAM: If proposal is to deepen or plug back, give data on present productive zone and proposed new productive zone. If proposal is to drill or deepen directionally, give pertinent data on subsurface locations and measured and true vertical depths. Give blowout preventer program, if any.

24. SIGNED BDS Shaw TITLE Administrative Supervisor

AS AMENDED 9/14/84

(This space for Federal or State use)

PERMIT NO. RECEIVED

APPROVAL DATE

APPROVED BY NOV 26 1984 TITLE

CONDITIONS OF APPROVAL, IF ANY:

OIL CON. DIV.
DIST. 3

NMDCG

*See Instructions On Reverse Side

5. LEASE DESIGNATION AND SERIAL NO.
SF-077992 077922

6. IF INDIAN, ALLOTTEE OR TRIBE NAME

7. UNIT AGREEMENT NAME

8. FARM OR LEASE NAME
Duff Gas Com

9. WELL NO.
#1E

10. FIELD AND POOL, OR WILDCAT
Basin Dakota

11. SEC., T., R., M., OR BLK.
AND SURVEY OR AREA
SW/NE Sec. 34, T30N, R12W

12. COUNTY OR PARISH
San Juan

13. STATE
NM

APPROVED

OCT 22 1984

FOR THE BUREAU OF LAND MANAGEMENT

FARMINGTON RESOURCE AREA

OIL CONSERVATION DIVISION

P. O. BOX 2048

Form C-107
Revised 10-1

STATE OF NEW MEXICO

OIL AND MINERALS DEPARTMENT

SANTA FE, NEW MEXICO 87501

All distances must be from the outer boundaries of the Section.

Operator AMOCO PRODUCTION COMPANY			Lease DUFF GAS COM		Well No. 1E
Unit Letter G	Section 34	Township 30N	Range 12W	County San Juan	
Actual Footage Location of Well: 1770 feet from the North line and 1480 feet from the East line					
Ground Level Elev. 5772	Producing Formation Dakota		Pool Basin Dakota		Dedicated Acreage: 320 Acres

1. Outline the acreage dedicated to the subject well by colored pencil or hatchure marks on the plat below.
2. If more than one lease is dedicated to the well, outline each and identify the ownership thereof (both as to working interest and royalty).
3. If more than one lease of different ownership is dedicated to the well, have the interests of all owners been consolidated by communitization, unitization, force-pooling, etc?

☒ Yes ☐ No If answer is "yes," type of consolidation Communitized

If answer is "no," list the owners and tract descriptions which have actually been consolidated. (Use reverse side of this form if necessary.)

No allowable will be assigned to the well until all interests have been consolidated (by communitization, unitization, forced-pooling, or otherwise) or until a non-standard unit, eliminating such interests, has been approved by the Commission.

1770'		1480'	
Sec.		34	
OIL CON. DIV. DIST. 3		RECEIVED SEP 18 1984 BUREAU OF LAND MANAGEMENT FARMINGTON RESOURCE AREA	

CERTIFICATION

I hereby certify that the information contained herein is true and complete to the best of my knowledge and belief.

B.D. Shaw

Name
B.D. Shaw

Position
Adm. Supervisor

Company
APC

Date
8/22/84

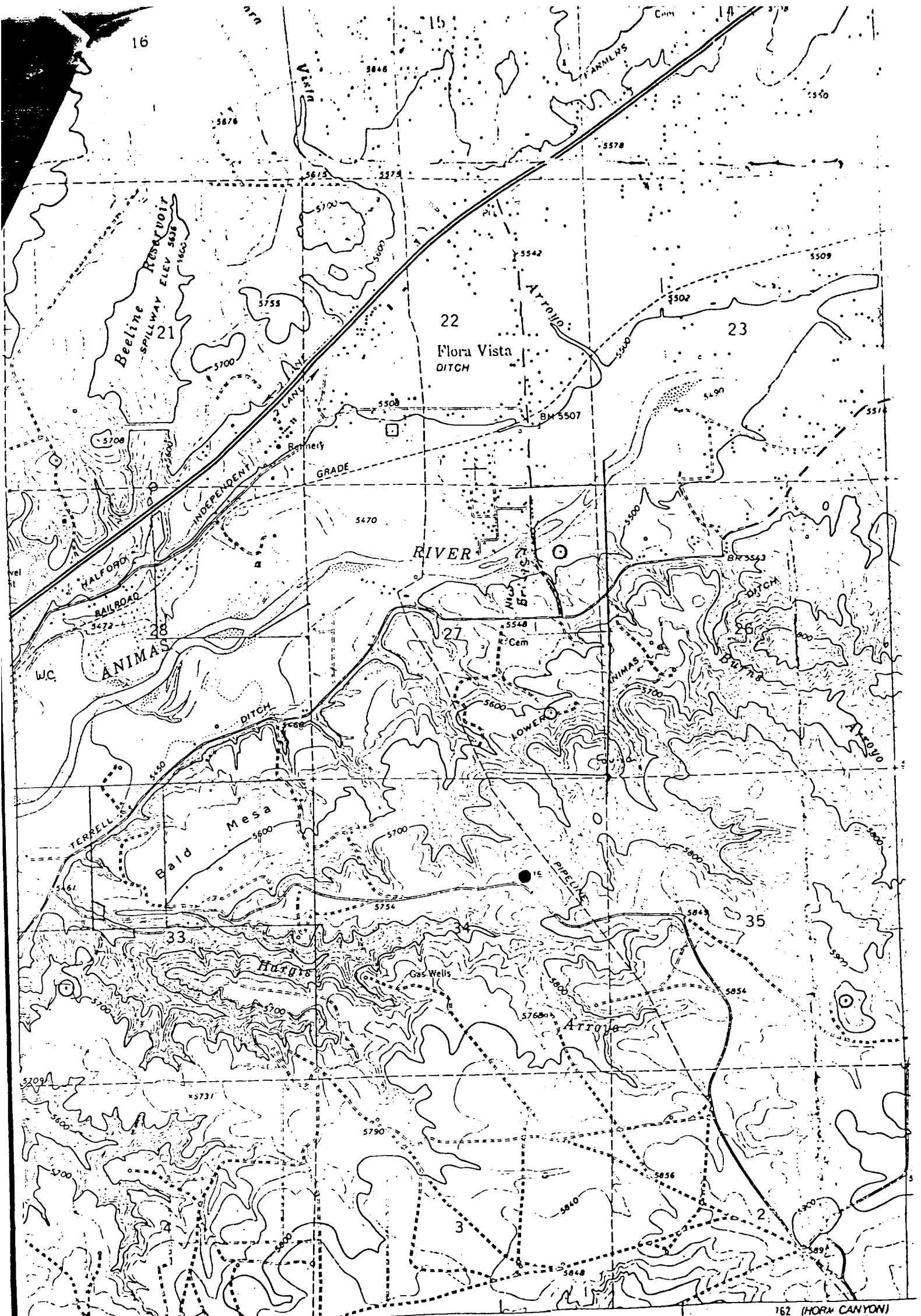
I hereby certify that the well location shown on this plat was plotted from field notes of actual surveys made by me or under my supervision, and that the same is true and correct to the best of my knowledge and belief.

Date Surveyed
August 20, 1984

Registered Professional Engineer
and Land Surveyor

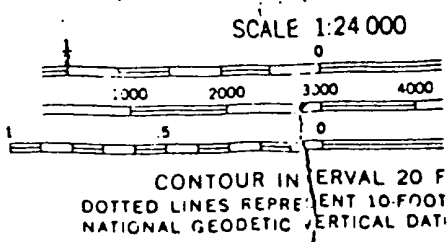
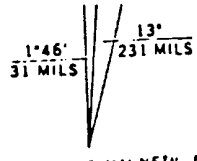
Fred. E. Kery Jr.

Certificate No. 22



by the Geological Survey
 data from aerial photographs
 dated 1963.
 American datum
 on coordinate system, west zone
 at grid ticks

Vicinity Map for
 AMOCO PRODUCTION CO. #1E DUFF GAS COM
 1770'FNL 1480'FEL Sec. 34-T30N-R12W
 SAN JUAN COUNTY, NEW MEXICO



1970 MAGNETIC NORTH