

UNITED STATES  
DEPARTMENT OF THE INTERIOR  
BUREAU OF LAND MANAGEMENT

APPLICATION FOR PERMIT TO DRILL, DEEPEN, OR PLUG BACK

1a. TYPE OF WORK

DRILL ☒

DEEPEN ☐

PLUG BACK ☐

b. TYPE OF WELL

OIL  
WELL ☐

GAS  
WELL ☒

OTHER

SINGLE  
ZONE ☒

MULTIPLE  
ZONE ☐

2. NAME OF OPERATOR

Union Texas Petroleum Corporation

3. ADDRESS OF OPERATOR

P.O. Box 1290, Farmington, New Mexico 87499

4. LOCATION OF WELL (Report location clearly and in accordance with any State requirements.)

At surface

1016' FSL; 834' FEL

At proposed prod. zone Same as above

14. DISTANCE IN MILES AND DIRECTION FROM NEAREST TOWN OR POST OFFICE\*

2 miles North of Farmington, New Mexico

10. DISTANCE FROM PROPOSED\*

LOCATION TO NEAREST  
PROPERTY OR LEASE LINE, FT.  
(Also to nearest drlg. unit line, if any)

834'

834'

18. DISTANCE FROM PROPOSED LOCATION\*  
TO NEAREST WELL, DRILLING, COMPLETED,  
OR APPLIED FOR, ON THIS LEASE, FT.

3076'

16. NO. OF ACRES IN LEASE

2440

19. PROPOSED DEPTH

6360'

17. NO. OF ACRES ASSIGNED  
TO THIS WELL

E/2 ~~340~~ 4320

20. ROTARY OR CABLE TOOLS

Rotary

21. ELEVATIONS (Show whether DF, RT, GR, etc.)

5564 GR (Ungraded)

DRILLING OPERATIONS AUTHORIZED ARE  
SUBJECT TO COMPLIANCE WITH ATTACHED

22. APPROX. DATE WORK WILL START\*

November 30, 1984

23. PROPOSED CASING AND CEMENTING PROGRAM

This action is subject to administrative  
appeal pursuant to 30 CFR 290.

SIZE OF HOLE	SIZE OF CASING	WEIGHT PER FOOT	SETTING DEPTH	QUANTITY OF CEMENT
12 1/4	New 8-5/8" K55	24.0 #	(+) 200'	165 cu.ft. CL "B" 2% CaCl circ.
7-7/8	New 4-1/2" K55	10.5 #	(+) 6360'	2 stages (see below) circulated

We desire to drill this well to the above described program. After cementing surface pipe and W.O.C. the surface pipe will be tested. Drill to T.D. using mud as the circulating medium and log the well. Run casing to T.D. with a D.V. tool at approx. 2000'. Cement the 1st stage with approx. 1260 cu.ft. of 50-50 POZ w/2% Gel, 0.6% FLA, 10,000# of salt and 250# of Flocele to circulate to the D.V. tool. 2nd stage: approx. 460 cu.ft. of 65-35 POZ with 12% Gel, 40# of Flocele and 1960# of Gilsonite followed by 118 cu.ft. of CL "B" cement with 2% CaCl<sub>2</sub> and 30# of Flocele to circulate to the surface. W.O.C. then clean out to T.D. and pressure test the casing. Perforate and fracture the Dakota zone. Clean the well up and run 2-3/8", J55 EUE tubing and land in the production zone. Nipple down the well lead. Test the and connect to a gathering system.

RECEIVED  
NOV 26 1984

OIL CON. DIV.

IN ABOVE SPACE DESCRIBE PROPOSED PROGRAM: If proposal is to deepen or plug back, give data on present productive zone and proposed new productive zone. If proposal is to drill or deepen directionally, give pertinent data on subsurface locations and measured and true vertical depths. Give blowout preventer program, if any.

24.

SIGNED

R. D. Motto

TITLE Area Operations Manager

DATE

October 16, 1984

(This space for Federal or State office use)

PERMIT NO.

APPROVAL DATE

APPROVED BY

TITLE

CONDITIONS OF APPROVAL, IF ANY:

AS AMENDED

NOV 01 1984

DATE

AREA MANAGER  
FARMINGTON RESOURCE AREA

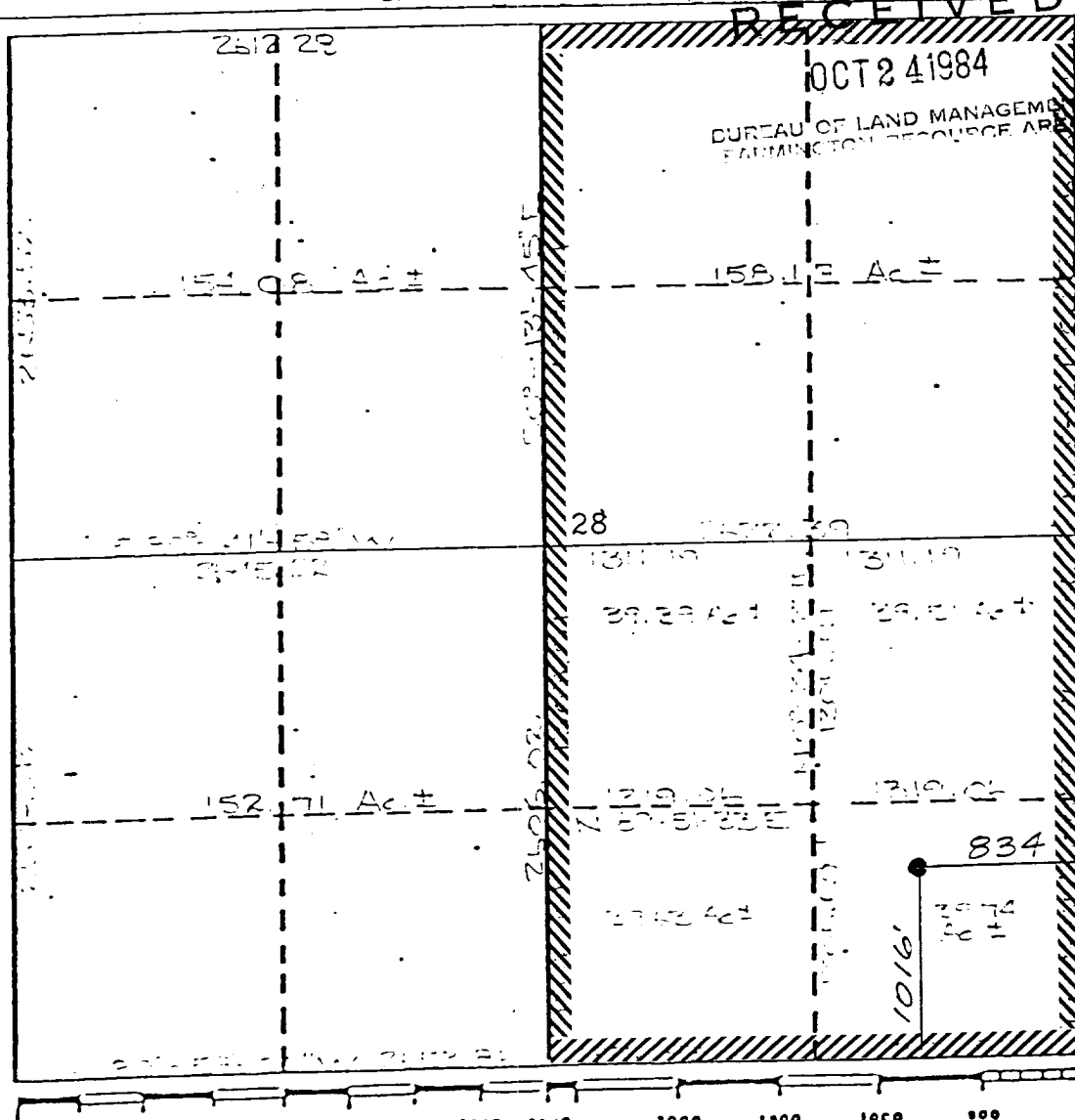
NMOCC  
\*See Instructions On Reverse Side

Operator UNION TEXAS PETROLEUM CORPORATION		Lease MCCORD		Well No. 8E
Unit Letter P	Section 28	Township 30 NORTH	Range 13 WEST	County SAN JUAN
Actual Footage Location of Wells 1016 feet from the SOUTH line and 834 feet from the EAST line				
Ground Level Elev. 3564	Producing Formation Dakota	Pool Basin	Dedicated Acres E/2 316.44 320 Acres	

- ☐ Yes ☒ No If answer is "yes," type of consolidation

If answer is "no," list the owners and tract descriptions which have actually been consolidated. (Use reverse side of this form if necessary.) Union Texas Exploration

No allowable will be assigned to the well until all interests have been consolidated (by communitization, unitization, forced-pooling, or otherwise) or until a non-standard unit, eliminating such interests, has been approved by the Commission.



I hereby certify that the information contained herein is true and complete to the best of my knowledge and belief.

Robert C. Frank

Regulatory &amp; Environmental

Company	Analyst
Union Texas Petroleum Corp.	

October 19, 1984

I hereby certify that the wall location shown on this plan was plotted from field notes of NEW REXING made by me or under my supervision, and that the same is true and correct to the best of my knowledge and belief.

August 17, 1984

Registered Professional Engineer  
and/or Land Surveyor

George R. Tompkins

Certificate No.  
7259

EXHIBIT A 8  
LEASE: SF-070214

MC CORD # 8E

1016' FSL & 834' FEL  
SEC. 28, T30N, R13W  
SAN JUAN COUNTY, N.M.

150' OF NEW ROAD IS NEEDED.

