

UNITED STATES
DEPARTMENT OF THE INTERIOR
GEOLOGICAL SURVEY

APPLICATION FOR PERMIT TO DRILL, DEEPEN, OR PLUG BACK

1a. TYPE OF WORK

DRILL ☒DEEPEN ☐PLUG BACK ☐

b. TYPE OF WELL

OIL
WELL ☐GAS
WELL ☒

OTHER

SINGLE
ZONE ☒MULTIPLE
ZONE ☐

2. NAME OF OPERATOR

DUGAN PRODUCTION CORP.

3. ADDRESS OF OPERATOR

P O Box 208, Farmington, NM 87499

4. LOCATION OF WELL (Report location clearly and in accordance with any State requirements.)

At surface

1600' FNL - 1600' FWL

At proposed prod. zone

14. DISTANCE IN MILES AND DIRECTION FROM NEAREST TOWN OR POST TO PROPOSED WELL

6 miles NW of Kirtland, NM

15. DISTANCE FROM PROPOSED*

LOCATION TO NEAREST
PROPERTY OR LEASE LINE, FT.
(Also to nearest drlg. unit line, if any)

1600'

16. NO. OF ACRES IN LEASE

1840

17. NO. OF ACRES ASSIGNED
TO THIS WELL

320

18. DISTANCE FROM PROPOSED LOCATION*
TO NEAREST WELL, DRILLING, COMPLETED,
OR APPLIED FOR, ON THIS LEASE, FT.

approx. 3500'

19. PROPOSED DEPTH

5980'

20. ROTARY OR CABLE TOOLS

Rotary

21. ELEVATIONS (Show whether DP, RT, GR, etc.)

5530'

22. APPROX. DATE WORK WILL START*

ASAP

23. PROPOSED DRILLING AND CEMENTING PROGRAM

DRILLING OPERATIONS AUTHORIZED ARE
SUBJECT TO COMPLIANCE WITH ATTACHED
"GENERAL REQUIREMENTS"

SIZE OF HOLE	SIZE OF CASING	WEIGHT PER FOOT	SETTING DEPTH	
12-1/4"	8-5/8"	24#	200'	160 cf circulated to surface
7-7/8"	4-1/2"	10.5#	5980'	1435 cf circulated to surface

Plan to drill a 12-1/4" hole and set 200' of 8-5/8" OD, 24#, J-55 surface casing; then plan to drill a 7-7/8" hole to total depth with gel-water-mud program to test the Dakota formation. Plan to run IES and CDL logs. If deemed productive, will run 4 1/2", 10.5#, J-55 casing, selectively perforate, frac, clean out after frac and complete well.

GAS IS NOT DEDICATED.

RECEIVED
AUG 07 1985
OIL CON. DIV.]
DIST. 3

IN ABOVE SPACE DESCRIBE PROPOSED PROGRAM: If proposal is to deepen or plug back, give data on present productive zone and proposed new productive zone. If proposal is to drill or deepen directionally, give pertinent data on subsurface locations and measured and true vertical depths. Give blowout preventer program, if any.

24.

SIGNED

Sherman E. Dugan
Sherman E. Dugan

TITLE

Geologist

DATE

7-15-85

(This space for Federal or State office use)

PERMIT NO.

APPROVAL DATE

APPROVED BY

TITLE

DATE

CONDITIONS OF APPROVAL, IF ANY:

7/17 J. Stan McKee

*See Instructions On Reverse Side

All distances must be from the outer boundaries of the Section.

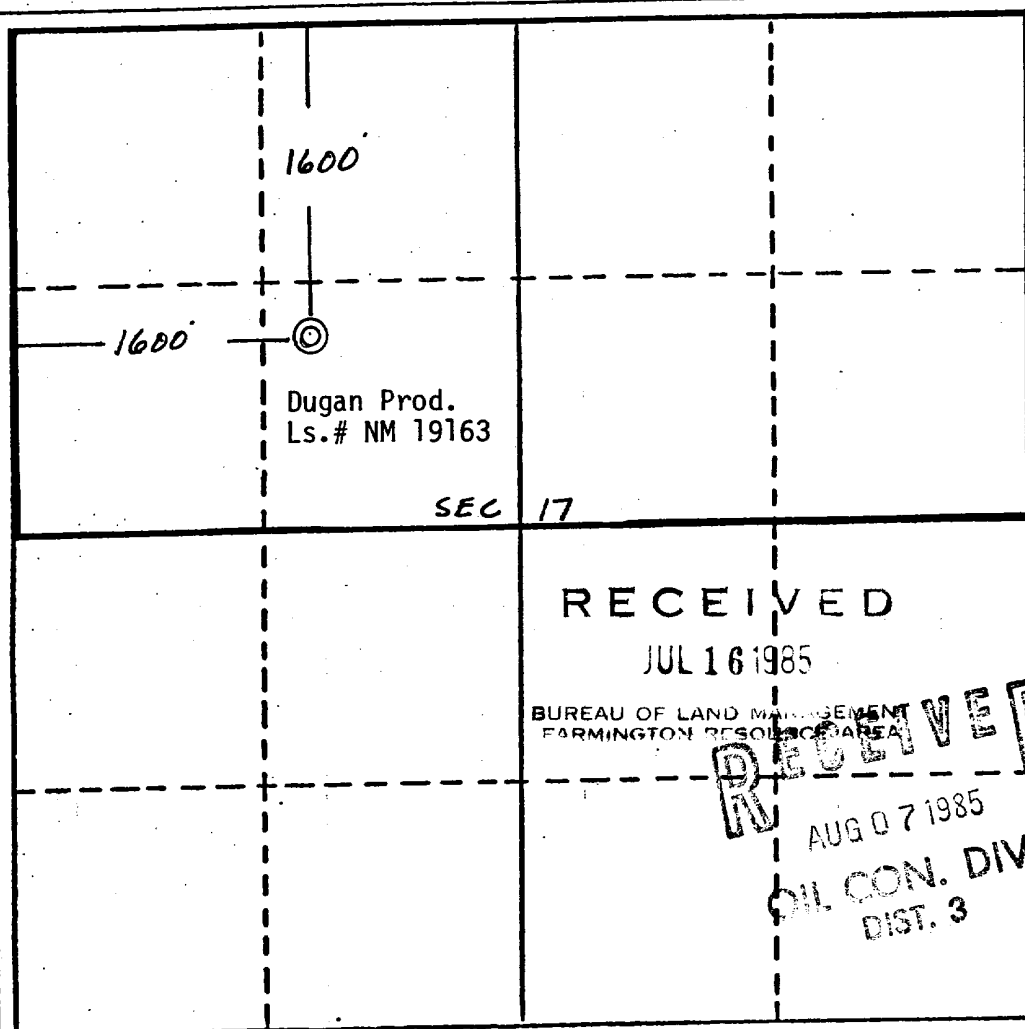
Operator Dugan Production Corporation			Lease Genoa		Well No. 1
Unit Letter F	Section 17	Township 30 North	Range 14 West	County San Juan	
Actual Footage Location of Wells:					
1600 feet from the North line and		1600 feet from the West line			
Ground Level Elev. 5530	Producing Formation Dakota	Pool Basin Dakota	Dedicated Acreage: 320 Acres		

1. Outline the acreage dedicated to the subject well by colored pencil or hachure marks on the plat below.
2. If more than one lease is dedicated to the well, outline each and identify the ownership thereof (both as to working interest and royalty).
3. If more than one lease of different ownership is dedicated to the well, have the interests of all owners been consolidated by communitization, unitization, force-pooling, etc?

☐ Yes ☐ No If answer is "yes," type of consolidation _____

If answer is "no," list the owners and tract descriptions which have actually been consolidated. (Use reverse side of this form if necessary.) _____

No allowable will be assigned to the well until all interests have been consolidated (by communitization, unitization, forced-pooling, or otherwise) or until a non-standard unit, eliminating such interests, has been approved by the Division.



RECEIVED
JUL 16 1985

BUREAU OF LAND MANAGEMENT
FARMINGTON RESOURCE AREA

RECEIVED
AUG 07 1985
OIL CON. DIV
DIST. 3

CERTIFICATION

I hereby certify that the information contained herein is true and complete to the best of my knowledge and belief.

Sherman E. Dugan

Name

Sherman E. Dugan

Position

Geologist

Company

Dugan Production Corp.

Date

7-15-85

EDGAR L. RISENHOOVER
REGISTERED LAND SURVEYOR
NEW MEXICO
5979
I, the undersigned, being a duly qualified and licensed land surveyor, have surveyed the above described land and find the location shown on this plat was obtained from field notes of actual survey made by me or under my supervision, and that the same is true and correct to the best of my knowledge and belief.

Date Surveyed

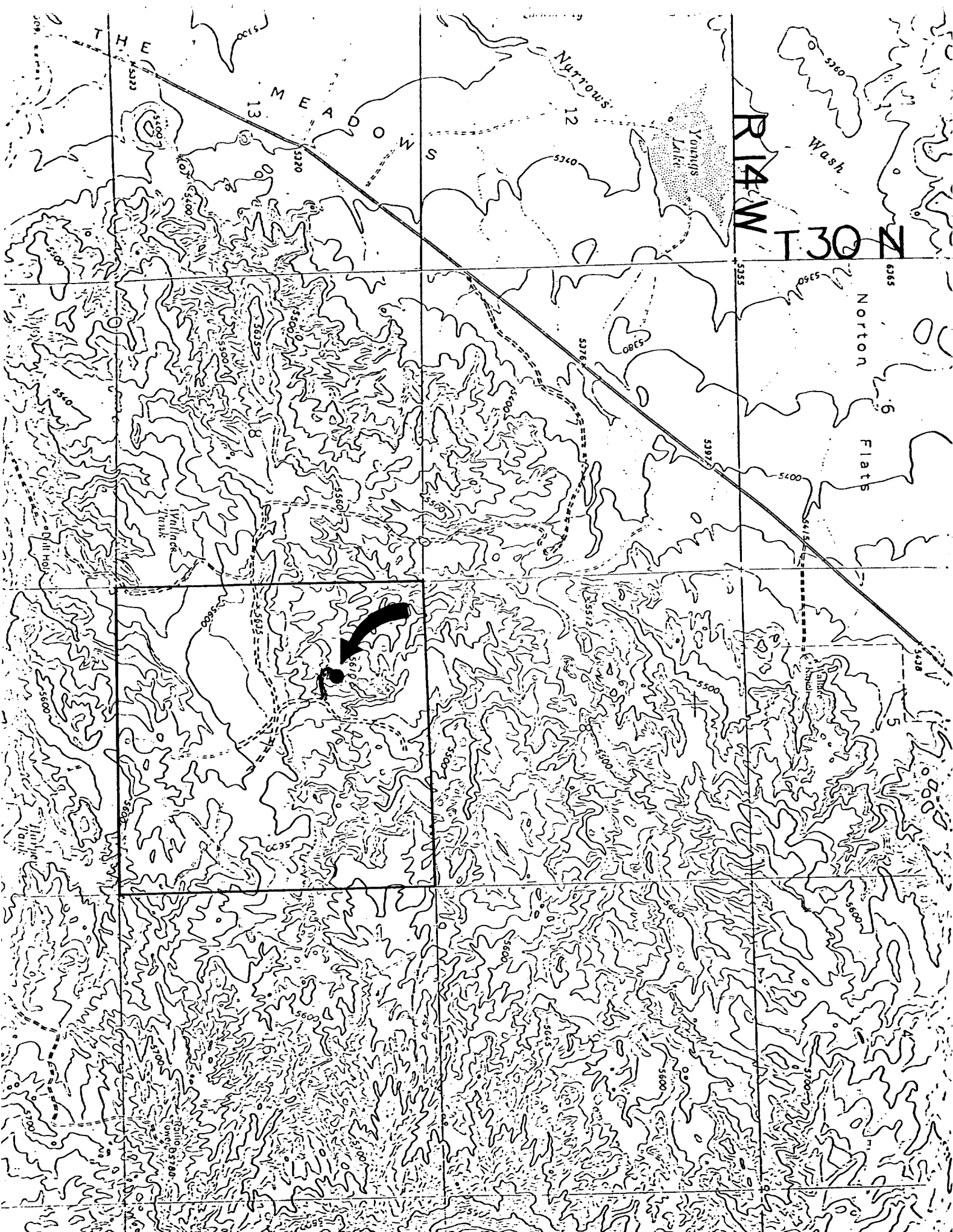
July 3, 1985

Registered Professional Engineer
and/or Land Surveyor

Edgar L. Risenhoover

Certificate No. 5979

Edgar L. Risenhoover, L. S.



DUGAN PRODUCTION CORP. - Genoa #1
Existing Roads Exhibit E

Distance from nearest town or reference pt.
6 miles NW of Kirtland, NM

Type of surface dirt

Conditions good

Other

DUGAN PRODUCTION CORP. - Genoa #1
Planned Access Road(s) Exhibit E

Width 20' Maximum grades 6-8%

Drainage design as needed

Cuts & Fills

Surfacing material on site

Turnouts

Culverts

Gates

Cattleguards

Fence cuts

Access road(s) do/do not cross Fed/Ind land.