

UNITED STATES  
DEPARTMENT OF THE INTERIOR  
BUREAU OF LAND MANAGEMENT

APPLICATION FOR PERMIT TO DRILL, DEEPEN, OR PLUG BACK

1a. TYPE OF WORK

DRILL ☒

DEEPEN ☐

PLUG BACK ☐

b. TYPE OF WELL

OIL  
WELL ☐

GAS  
WELL ☒

OTHER

SINGLE  
ZONE ☒

MULTIPLE  
ZONE ☐

2. NAME OF OPERATOR

El Paso Natural Gas Company

3. ADDRESS OF OPERATOR

PO Box 4289, Farmington, NM 87499

4. LOCATION OF WELL (Report location clearly and in accordance with any State requirements.)

At surface  
1340'N, 1350'E

At proposed prod. zone

14. DISTANCE IN MILES AND DIRECTION FROM NEAREST TOWN OR POST OFFICE\*

4 miles north of Navajo Dam, NM

15. DISTANCE FROM PROPOSED\*  
LOCATION TO NEAREST  
PROPERTY OR LEASE LINE, FT.  
(Also to nearest drig. unit line, if any)

1340'

18. DISTANCE FROM PROPOSED LOCATION\*  
TO NEAREST WELL, DRILLING, COMPLETED,  
OR APPLIED FOR, ON THIS LEASE, FT.

600'

16. NO. OF ACRES IN LEASE

19. PROPOSED DEPTH

7825'

17. NO. OF ACRES ASSIGNED  
TO THIS WELL

320.00

20. ROTARY OR CABLE TOOLS

Rotary

21. ELEVATIONS (Show whether DF, RT, GR, etc.)

6365'GL

DRILLING OPERATIONS AUTHORIZED ARE  
SUBJECT TO COMPLIANCE WITH ATTACHED  
"GENERAL REQUIREMENTS FOR CEMENTING PROGRAM"  
PROPOSED CEMENTING PROGRAM

This action is subject to technical and  
procedural review pursuant to 43 CFR 3165.3  
and appeal pursuant to 43 CFR 3165.4.

SIZE OF HOLE	SIZE OF CASING	WEIGHT PER FOOT	SETTING DEPTH	QUANTITY OF CEMENT
12 1/4"	9 5/8"	36.0#	200'	130 cf circulated
8 3/4"	7"	20.0#	3550'	499 cf cover Ojo Alamo
6 1/4"	4 1/2"	10.5&11.6#	7825'	660 cf fill to inter.

Selectively perforate and sand water fracture the Dakota formation.

A 3000 psi WP and 6000 psi test double gate preventer equipped with blind and pipe rams will be used for blow out prevention on this well.

This gas is dedicated.

The E/2 of Section 31 is dedicated to this well.

RECEIVED

SEP 09 1985

OIL CON. DIV

DIST

IN ABOVE SPACE DESCRIBE PROPOSED PROGRAM: If proposal is to deepen or plug back, give data on present productive zone and proposed new productive zone. If proposal is to drill or deepen directionally, give pertinent data on subsurface locations and measured and true vertical depths. Give blowout preventer program, if any.

24. Peggy L. Drah Drilling Clerk 8-13-85  
SIGNED TITLE DATE

(This space for Federal or State office use)

PERMIT NO. APPROVAL DATE

APPROVED BY TITLE DATE  
CONDITIONS OF APPROVAL, IF ANY:

NSL 2137  
Eva

NMOCC

\*See Instructions On Reverse Side

M. MILLENBACH  
AREA MANAGER

NEW MEXICO OIL CONSERVATION COMMISSION  
WELL LOCATION AND ACREAGE DEDICATION PLAT

Form C-102  
Supersedes C-128  
Effective 1-1-55

All distances must be from the outer boundaries of the Section.

Operator <b>EL PASO NATURAL GAS COMPANY</b>			Lease <b>HOWELL "D" (SF 078387)</b>		Well No. <b>5E</b>
Unit Letter <b>G</b>	Section <b>31</b>	Township <b>31N</b>	Range <b>8W</b>	County <b>San Juan</b>	
Actual Footage Location of Well: <b>1340</b> feet from the <b>North</b> line and <b>1350</b> feet from the <b>East</b> line					
Ground Level Elev. <b>6365</b>	Producing Formation <b>Dakota</b>		Pool <b>Basin Dakota</b>		Dedicated Acreage: <b>320</b> Acres

1. Outline the acreage dedicated to the subject well by colored pencil or hachure marks on the plat below.
2. If more than one lease is dedicated to the well, outline each and identify the ownership thereof (both as to working interest and royalty).
3. If more than one lease of different ownership is dedicated to the well, have the interests of all owners been consolidated by communitization, unitization, force-pooling, etc?

☐ Yes ☐ No If answer is "yes," type of consolidation \_\_\_\_\_

If answer is "no," list the owners and tract descriptions which have actually been consolidated. (Use reverse side of this form if necessary.) \_\_\_\_\_

No allowable will be assigned to the well until all interests have been consolidated (by communitization, unitization, forced-pooling, or otherwise) or until a non-standard unit, eliminating such interests, has been approved by the Commission.

**RECEIVED**

**AUG 16 1985**

**31**

**RECEIVED**

**SEP 09 1985**

**OIL CON. DIV.**

**DIST. 3**

CERTIFICATION

I hereby certify that the information contained herein is true and complete to the best of my knowledge and belief.

*Rogey Deal*

Name  
Drilling Clerk

Position  
El Paso Natural Gas Co.

Company  
*August 15, 1985*

Date

I hereby certify that the well location shown on this plat was plotted from field notes of actual surveys made by me or under my supervision, and that the same is true and correct to the best of my knowledge and belief.

Date Surveyed  
**August 5, 1985**

Registered Professional Engineer  
and Land Surveyor

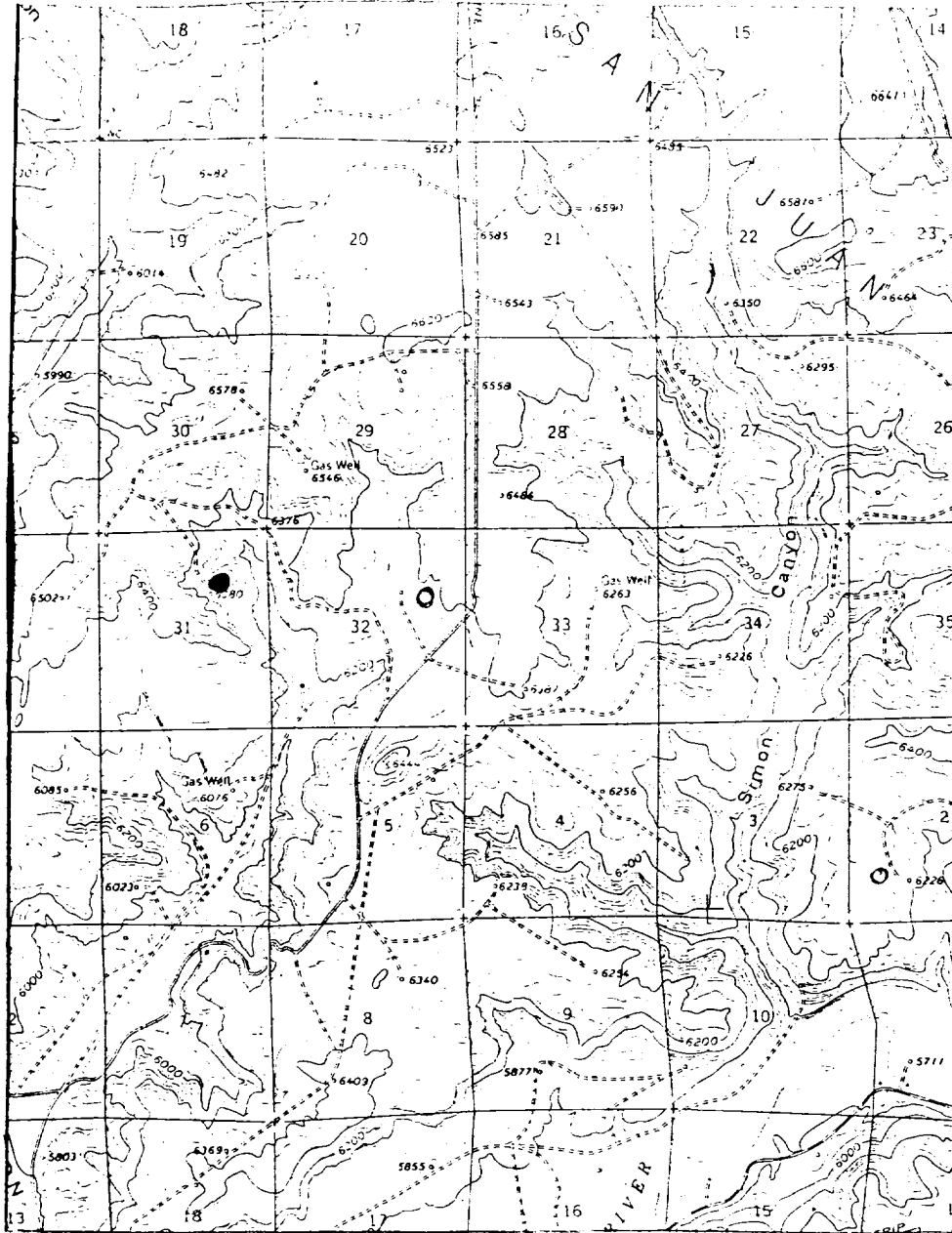
*Fred B. Kerr Jr.*  
Fred B. Kerr Jr.

Certificate No.

3950

Scale: 1"=1000'

Howell D #5E (DK)  
NE 31-31-8



Map #1

LEGEND OF RIGHT-OF-WAYS

- EXISTING ROADS —————
- EXISTING PIPELINES + + +
- EXISTING ROAD & PIPELINE + + +
- PROPOSED ROADS —————
- PROPOSED PIPELINES - - - - -
- PROPOSED ROAD & PIPELINE - - - - -

San Juan Co. #24  
SE 16-30-6 (E2)