

UNITED STATES
DEPARTMENT OF THE INTERIOR
BUREAU OF LAND MANAGEMENT

APPLICATION FOR PERMIT TO DRILL, DEEPEN, OR PLUG BACK

1a. TYPE OF WORK
 DRILL DEEPEN PLUG BACK
 b. TYPE OF WELL
 OIL WELL GAS WELL OTHER SINGLE ZONE MULTIPLE ZONE

2. NAME OF OPERATOR
 Union Texas Petroleum

3. ADDRESS OF OPERATOR
 375 U.S. Highway 64, Farmington New Mexico 87401

4. LOCATION OF WELL (Report location clearly and in accordance with any State requirements.)
 At surface 1080' FSL & 1617' FWL
 At proposed prod. zone Same as above

14. DISTANCE IN MILES AND DIRECTION FROM NEAREST TOWN OR POST OFFICE*
 1-1/2 miles N-NW Farmington, New Mexico

15. DISTANCE FROM PROPOSED* LOCATION TO NEAREST PROPERTY OR LEASE LINE, FT. (Also to nearest drig. unit line, if any) 1080
 16. NO. OF ACRES IN LEASE 520
 17. NO. OF ACRES ASSIGNED TO THIS WELL 320.40 w/2
 19. DISTANCE FROM PROPOSED LOCATION* TO NEAREST WELL, DRILLING, COMPLETED, OR APPLIED FOR, ON THIS LEASE, FT. N/A
 20. ROTARY OR CABLE TOOLS Rotary

21. ELEVATIONS (Show whether DF, RT, GR, etc.) DRILLING OPERATIONS AUTHORIZED ARE SUBJECT TO COMPLIANCE WITH ATTACHED
 5720' Graded

23. PROPOSED CASING AND CEMENTING PROGRAM
 "GENERAL REQUIREMENTS"

SIZE OF HOLE	SIZE OF CASING	WEIGHT PER FOOT	SETTING DEPTH
12-1/4"	8-5/8"	24#	300'
7-7/8"	4-1/2"	10.5	6580'

This action is subject to technical and procedural review pursuant to 43 CFR 3165.3 and appeal pursuant to 43 CFR 3165.4.

Union Texas Petroleum desires to drill a 12-1/4" hole to 300+ and set 8-5/8" 24#, K-55, SF & C to 300+ cementing same to surface with 210 sxs (248 cu.ft.) C1 "B" containing 2% CaCl2. W.O.C. Nipple up. Test BOP, choke manifold and casing. Drill 7-7/8" hole out of surface casing to 6580'. Log well with DIL-GR: TD-Surface casing. FDC-CNL: TD-1450'. If commercial production is indicated run 4-1/2", 10.5#, K-55, ST & C casing to TD. Cement 1st stage with 725 sxs (1009 cu.ft.) 50/50 poz w/2% gel, 6-1/4# gilsonite, 10# salt. (Stage tool @ 3300+) Cement 2nd stage with 315 sxs (904 cu.ft.) 65/35 poz w/12% gel, 12-1/4# gilsonite 1/2 flocele/sx tailed by 100 sxs (118 cu.ft.) C1 "B" w/2% CaCl2. Perforate Dakota pay. Frac Dakota. Test well. Install production equipment.

RECEIVED

AUG 25 1986

OIL CON. DIV.

DIST. 3

IN ABOVE SPACE DESCRIBE PROPOSED PROGRAM: If proposal is to deepen or plug back, give data on present productive zone and proposed new productive zone. If proposal is to drill or deepen directionally, give pertinent data on subsurface locations and depths. Give blowout preventer program, if any.

24. SIGNED L.R. La Follette TITLE Regulatory Analyst DATE April 17, 1986
 (This space for Federal or State office use)

PERMIT NO. _____ APPROVAL DATE _____
 APPROVED BY _____ TITLE _____ DATE _____
 CONDITIONS OF APPROVAL, IF ANY:

NMOCC

/s/ J. Stan McKee
 FOR AREA MANAGER

*See Instructions On Reverse Side

NEW MEXICO OIL CONSERVATION COMMISSION
WELL LOCATION AND ACREAGE DEDICATION PLAT - EXHIBIT I

Form C-103
Supersedes C-170
Effective 1-1-63

All distances must be from the outer boundaries of the Section.

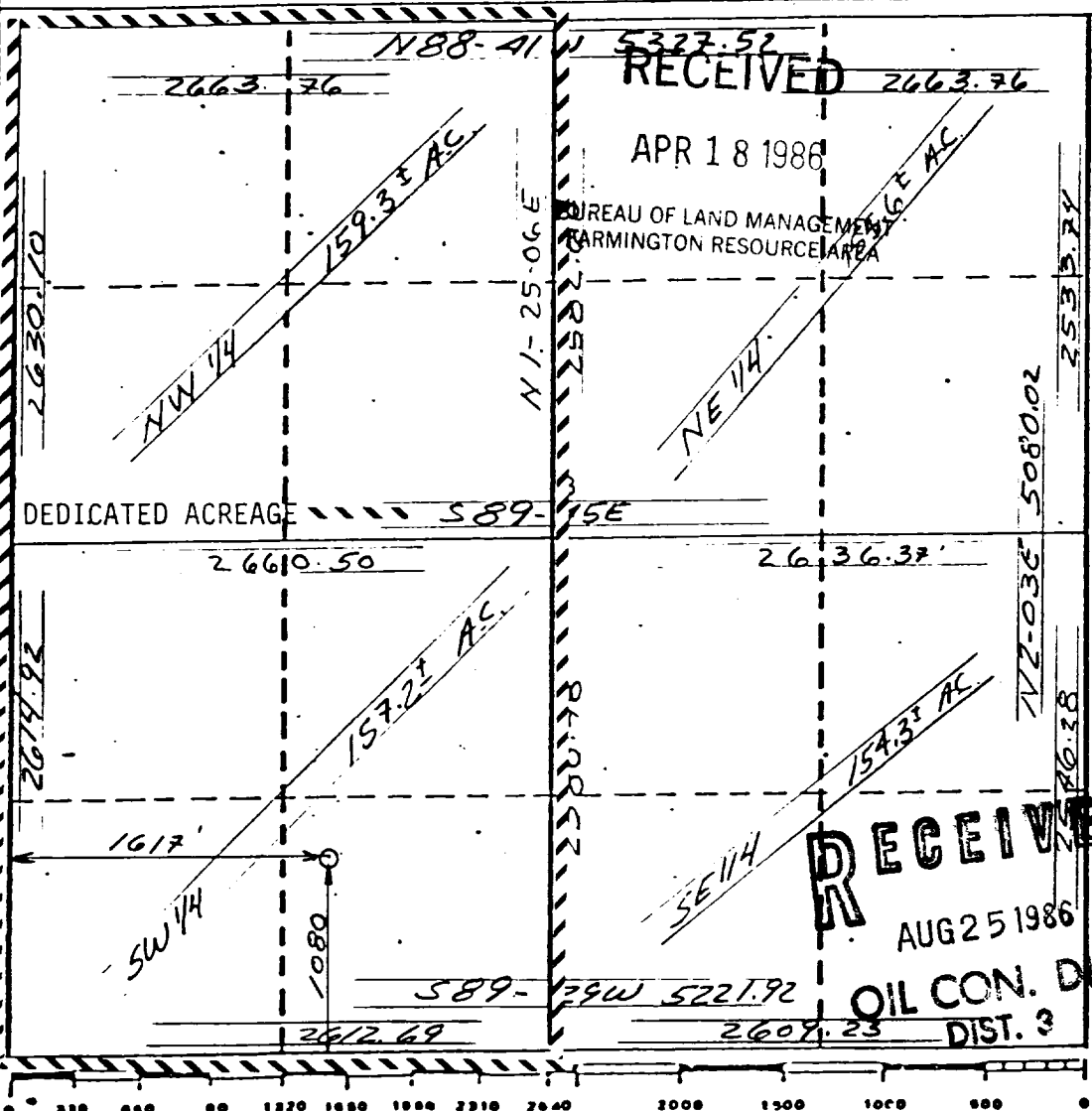
Operator UNION TEXAS PETROLEUM CORPORATION			Lease MCCORD		Well No. 14E
Unit Letter N	Section 3	Township 30 NORTH	Range 13 WEST	County SAN JUAN	
Actual Footage Location of Wells 1080 feet from the SOUTH line and 1617 feet from the WEST line					
Ground Level Elev. 5720	Producing Formation DAKOTA		Pool BASIN	Dedicated Acreages 316.5 Acres	

1. Outline the acreage dedicated to the subject well by colored pencil or hachure marks on the plat below.
2. If more than one lease is dedicated to the well, outline each and identify the ownership thereof (both as to working interest and royalty).
3. If more than one lease of different ownership is dedicated to the well, have the interests of all owners been consolidated by communitization, unitization, force-pooling, etc?

Yes No If answer is "yes," type of consolidation communitization-joint operating agreement

If answer is "no," list the owners and tract descriptions which have actually been consolidated. (Use reverse side of this form if necessary.)

No allowable will be assigned to the well until all interests have been consolidated (by communitization, unitization, forced-pooling, or otherwise) or until a non-standard unit, eliminating such interests, has been approved by the Commission.



CERTIFICATION

I hereby certify that the information contained herein is true and complete to the best of my knowledge and belief.

L. R. La Follette

Name
L. R. La Follette
Position
Regulatory Analyst
Company
Union Texas Petroleum
Date
April 18, 1986

I hereby certify that the well location shown on this plat was plotted from field notes of actual surveys made by me or under my supervision, and that the same is true and correct to the best of my knowledge and belief.

GEORGE R. TOMPKINS
NEW MEXICO
REGISTERED PROFESSIONAL SURVEYOR
No. 7259
February 5, 1986

George R. Tompkins
George R. Tompkins

Certificate No.
7259

McLONN
RIVER

Continue for almost 2-1/2 miles to a "T",
turn right, proceed in a northeasterly
direction for 3/4 of a mile, turn left
onto proposed new road, continue 900'
to new location.

33

Gas Well

35

PLATE

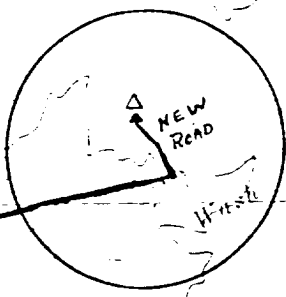
5903

5973

Pickering

Arroyo

5915



5543

South

Pack

Twin

10 Wash

5587

55624

Gas Well

577A

55604

16

15

14