

UNITED STATES
DEPARTMENT OF THE INTERIOR
BUREAU OF LAND MANAGEMENT

APPLICATION FOR PERMIT TO DRILL, DEEPEN, OR PLUG BACK

1a. TYPE OF WORK

DRILL ☒

DEEPEN ☐

PLUG BACK ☐

b. TYPE OF WELL

OIL
WELL ☐

GAS
WELL ☒

OTHER

SINGLE
ZONE ☒

MULTIPLE
ZONE ☐

2. NAME OF OPERATOR

Union Texas Petroleum

3. ADDRESS OF OPERATOR

375 U.S. Highway 64, Farmington New Mexico 87401

4. LOCATION OF WELL (Report location clearly and in accordance with any State requirements.)

At surface 1700' FSL & 1700' FEL

At proposed prod. zone

14. DISTANCE IN MILES AND DIRECTION FROM NEAREST TOWN OR POST OFFICE

7 miles north of Archuleta, New Mexico

15. DISTANCE FROM PROPOSED*
LOCATION TO NEAREST
PROPERTY OR LEASE LINE, FT.
(Also to nearest drig. unit line, if any)

1931' from lease

927' from DU

18. DISTANCE FROM PROPOSED LOCATION*
TO NEAREST WELL, DRILLING, COMPLETED,
OR APPLIED FOR, ON THIS LEASE, FT.

2496'

16. NO. OF ACRES IN LEASE

2197.12

19. PROPOSED DEPTH

5590'

17. NO. OF ACRES ASSIGNED
TO THIS WELL

320.00
E/2 316.47

20. ROTARY OR CABLE TOOLS

Rotary

21. ELEVATIONS (Show whether DF, RT, GR, etc.)

6070' G.L.

DRILLING OPERATIONS AUTHORIZED ARE

SUBJECT TO COMPLIANCE WITH ATTACHED

GENERAL REQUIREMENTS CEMENTING PROGRAM

22. APPROX. DATE WORK WILL START*

November 30, 1986

This action is subject to technical and
procedural review pursuant to 43 CFR 3165.3
and appeal pursuant to 43 CFR 3165.4.

| SIZE OF HOLE | SIZE OF CASING | WEIGHT PER FOOT | SETTING DEPTH | QUANTITY OF CEMENT |
|--------------|----------------|-----------------|---------------|--------------------------------|
| 12-1/4" | 9-5/8" | 32.3 | 300' | 175 sxs. (207 cu.ft.) C1 "B" |
| 8-1/2" | 7" | 23.0 | 3200' | 275 sxs. (620 cu.ft.) 65/35 PO |
| 6-1/4" | 4-1/2" liner | 10.5 | 3000'-5590' | 320 sxs. (502 cu.ft.) 50/50 PO |

This location was previously inspected on 12/07/83.

Union Texas Petroleum wishes to advise we intend to drill 12-1/4" hole with mud to 300+ and set 9-5/8" 32.3#, H-40, ST&C csg. to 300 +, cementing to surface with 175 sxs (207 cu.ft.) C1 "B" with 2% CaCl2 and 1/4# flocele/sk. Wait on cement for 12 hrs.

Nipple up, test BOP. Drill 8-1/2" hole with mud out of surface to 3200'. Set 7", 23#, K-55, ST&C intermediate csg. to 3200', cementing to the surface with 175 sxs (502 cu.ft.) 65/35 POZ with 12% gel and 12-1/4# gilsonite/sk, tailed by 100 sxs (118 cu.ft.) C1 "B" with 2% CaCl2. Drill 6-1/4" hole, with natural gas out of intermediate to a TD of 5590'. Log well, run 4-1/2", 10.5#, K-55, ST&C liner from 2000'+ to 5590'+. Cement liner into intermediate csg. with 320 sxs (502 cu.ft.) 50/50 POZ with 4% gel, 6-1/4# gilsonite/sk, and 10# salt/sk.

Following perforation and treatment of the Mesaverde formation, standard production equipment will be installed. Equip well with cathodic protection. All cathodic lines on well will be on lease and will follow newly constructed roads.

IN ABOVE SPACE DESCRIBE PROPOSED PROGRAM: If proposal is to deepen or plug back, give data on present productive zone and proposed new productive zone. If proposal is to drill or deepen directionally, give pertinent data on subsurface locations and measured and true vertical depths. Give blowout preventer program, if any.

24.

SIGNED

Robert C. Frank

TITLE

Permit Coordinator

11/06/86

(This space for Federal or State office use)

PERMIT NO.

APPROVAL DATE DEC 19 1986

APPROVED BY

TITLE

OIL CON. DIV.

DATE

DEC 18 1986

CONDITIONS OF APPROVAL, IF ANY:

DIST. 3

AREA MANAGER

NMOCC

*See Instructions On Reverse Side

All distances must be from the outer boundaries of the section.

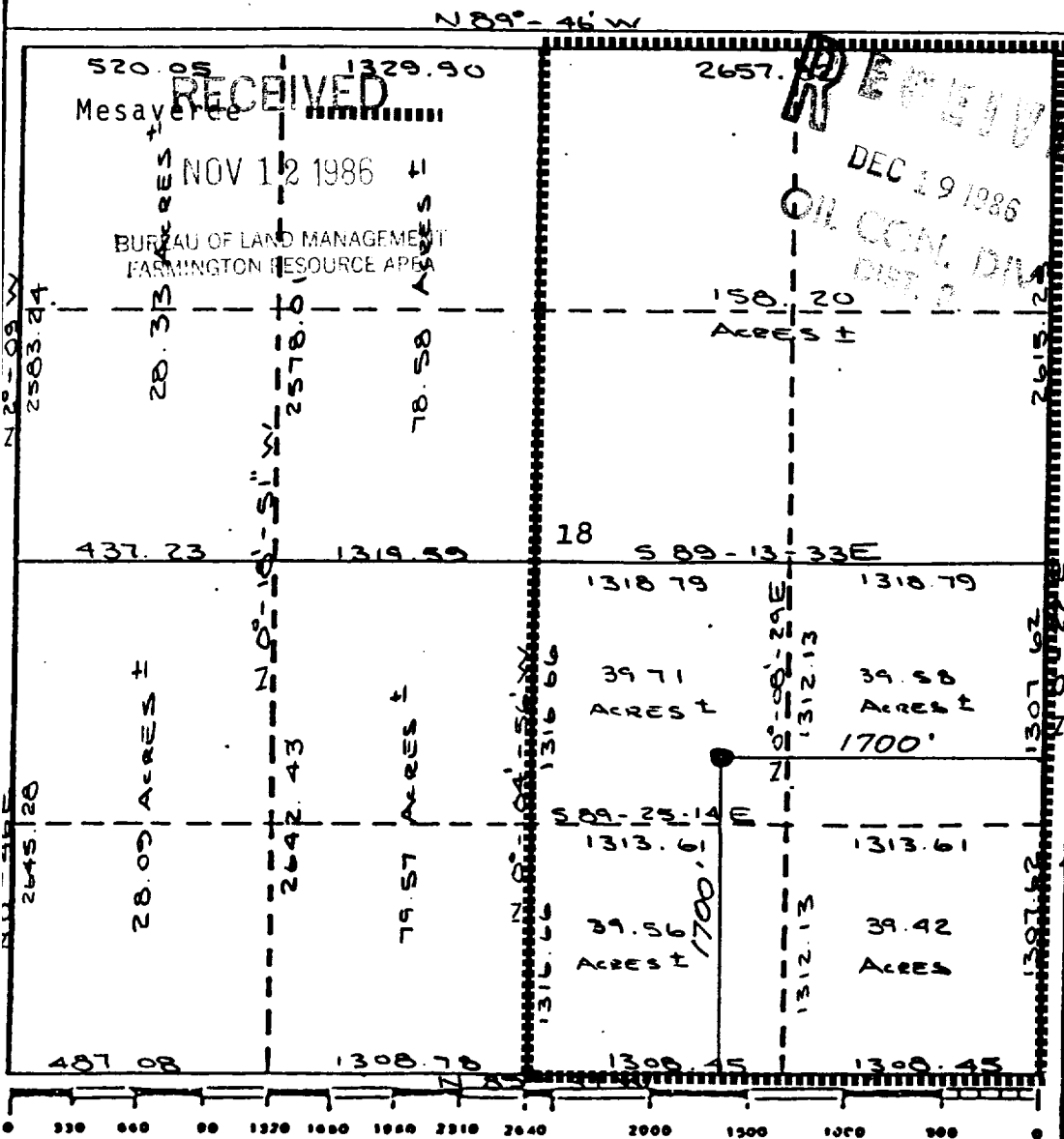
| | | | | | |
|--|---|-----------------------------|------------------------|---|-----------------------|
| Operator UNION TEXAS PETROLEUM CORPORATION | | | Lease QUINN | | Well No. 8A |
| Unit Letter J | Section 18 | Township 31 NORTH | Range 8 WEST | County SAN JUAN | |
| Actual Footage Location of Well: 1700 feet from the SOUTH line and 1700 feet from the EAST line | | | | | |
| Ground Level Elev. 6070 | Producing Formation Mesaverde | | Pool Blanco | Dedicated Acreage: 320.00 316.47 (E/2) Acres | |

1. Outline the acreage dedicated to the subject well by colored pencil or hatchure marks on the plat below.
2. If more than one lease is dedicated to the well, outline each and identify the ownership thereof (both as to working interest and royalty).
3. If more than one lease of different ownership is dedicated to the well, have the interests of all owners been consolidated by communitization, unitization, force-pooling, etc?

☐ Yes ☐ No -- If answer is "yes," type of consolidation _____

If answer is "no," list the owners and tract descriptions which have actually been consolidated. (Use reverse side of this form if necessary.) _____

No allowable will be assigned to the well until all interests have been consolidated (by communitization, unitization, forced-pooling, or otherwise) or until a non-standard unit, eliminating such interests, has been approved by the Division



| | |
|--|------------------------------|
| CERTIFICATION | |
| I hereby certify that the information contained herein is true and complete to the best of my knowledge and belief. | |
| Name | Robert C. Frank |
| Position | Permit Coordinator |
| Company | Union Texas Petroleum |
| Date | November 5, 1986 |
| I hereby certify that the well location shown on this plat was plotted from field notes of a survey made by me or under my supervision, and that the same is true and correct to the best of my knowledge. | |
| Date Surveyed | November 17, 1983 |
| Registered Professional Engineer and/or Land Surveyor | |
| Michael Daly | |
| Certificate No. | 5992 |
| Exhibit I | |

