

UNITED STATES
DEPARTMENT OF THE INTERIOR
BUREAU OF LAND MANAGEMENT

APPLICATION FOR PERMIT TO DRILL, DEEPEN, OR PLUG BACK

1a. TYPE OF WORK
DRILL ☒ DEEPEN ☐ PLUG BACK ☐
b. TYPE OF WELL
OIL WELL ☐ GAS WELL ☒ OTHER ☐ SINGLE ZONE ☒ MULTIPLE ZONE ☐
2. NAME OF OPERATOR
Union Texas Petroleum
3. ADDRESS OF OPERATOR
375 U.S. Highway 64, Farmington New Mexico 87401
4. LOCATION OF WELL (Report location clearly and in accordance with any State requirements)
At surface 1660' FSL & 1794' FWL
At proposed prod. zone
Same as above
14. DISTANCE IN MILES AND DIRECTION FROM NEAREST TOWN OR POST OFFICE
10 miles NW of Archuleta, New Mexico
15. DISTANCE FROM PROPOSED LOCATION TO NEAREST PROPERTY OR LEASE LINE, FT.
(Also to nearest drig. unit line, if any)
798' from lease
798' from DU
16. NO. OF ACRES IN LEASE
2348.80
17. NO. OF ACRES ASSIGNED TO THIS WELL
SW/4 156.20
18. DISTANCE FROM PROPOSED LOCATION TO NEAREST WELL, DRILLING, COMPLETED, OR APPLIED FOR, ON THIS LEASE, FT.
817'
19. PROPOSED DEPTH
3245'
20. ROTARY OR CABLE TOOLS
Rotary

5. LEASE DESIGNATION AND SERIAL NO.
SF-078505
6. IF INDIAN, ALLOTTEE OR TRIBE NAME
N/A
7. UNIT AGREEMENT NAME
N/A
8. FARM OR LEASE NAME
SEYMOUR
9. WELL NO.
10
10. FIELD AND POOL, OR WILDCAT
Sedro Canyon Fruitland
11. SEC., T., R., M., OR BLK. AND SURVEY OR AREA
K
Section 23, T31N-R9W
12. COUNTY OR PARISH
San Juan
13. STATE
NM

21. ELEVATIONS (Show whether DF, RT, GR, etc.)
6401' G.L. (graded)
22. APPROX. DATE WORK WILL START*
June 25, 1987
23. DRILLING OPERATIONS AUTHORIZED ARE
SUBJECT TO COMPLIANCE WITH ATTACHED
PROPOSED CASING, AND CEMENTING PROGRAM
"GENERAL REQUIREMENTS"

SIZE OF HOLE	SIZE OF CASING	WEIGHT PER FOOT	SETTING DEPTH	QUANTITY OF CEMENT
12-1/4"	9-5/8"	32.3#	590'	345 sxs (407 cu.ft.)
8-3/4"	7"	23.0#	3070'	310 sxs (721 cu.ft.)
6-1/4"	open hole		open hole	

Union Texas Petroleum wishes to advise we intend to drill 12-1/4" hole with mud to 590+ and set 9-5/8" 32.3#, H-40, ST&C csg. to 590'+, cementing to surface with 345 sxs (407 cu.ft.) C1 "B" with 2% CaCl2 and 1/4# flocele/sk. Wait on cement for 12 hrs.

Nipple up, test BOP. Drill 8-3/4" hole with mud out of surface to 3070'. Set 7", 23.0#, K-55, ST&C intermediate csg. to 3070', cementing to surface with 210 sxs (603 cu.ft.) 65-35 POZ with 12% gel and 12-1/4# gilsonite/sk, tailed by 100 sxs (118 cu.ft) C1 "B" with 2% CaCl2.

Drill 6-1/4" hole with air out of intermediate to a TD of 3245'. Log well. This well is to be completed open hole. If an open hole completion is not possible, we intend to run a slotted 4-1/2", 10.5#, K-55 ST&C liner from 2970'-3245'. If a liner is used, we will not cement it in place. Following completion of the Fruitland, standard production equipment will be installed. We request permission to test this well into the reserve pit for a period of at least 90 days. A cathodic protection groundbed will be drilled on location. AC power cable will be buried from the Seymour #5 along existing roads to the Seymour #10. Pipeline connection will be made by Southern Union Gathering.

IN ABOVE SPACE DESCRIBE PROPOSED PROGRAM: If proposal is to deepen or plug back, give data on present productive zone and proposed new productive zone. If proposal is to drill or deepen directionally, give pertinent data on subsurface locations and measured and true vertical depths. Give blowout preventer program, if any.

24. SIGNED Robert C. Frank TITLE Permit Coordinator DATE April 30, 1987
(This space for Federal or State office use)

PERMIT NO. _____

APPROVAL _____

APPROVED
AS AMENDED

"Approval of this action does not warrant that the applicant holds legal or equitable right or title to this lease."

APPROVED BY _____ TITLE _____
CONSENTS OF APPROVAL IS ANY:
OK
1/10

*See Instructions On Reverse Side

NEW MEXICO OIL CONSERVATION COMMISSION

WELL LOCATION AND ACREAGE DEDICATION PLAT

Form O-100
Supplement C-121
Effective 1-1-83

All distances must be from the outer boundaries of the Section.

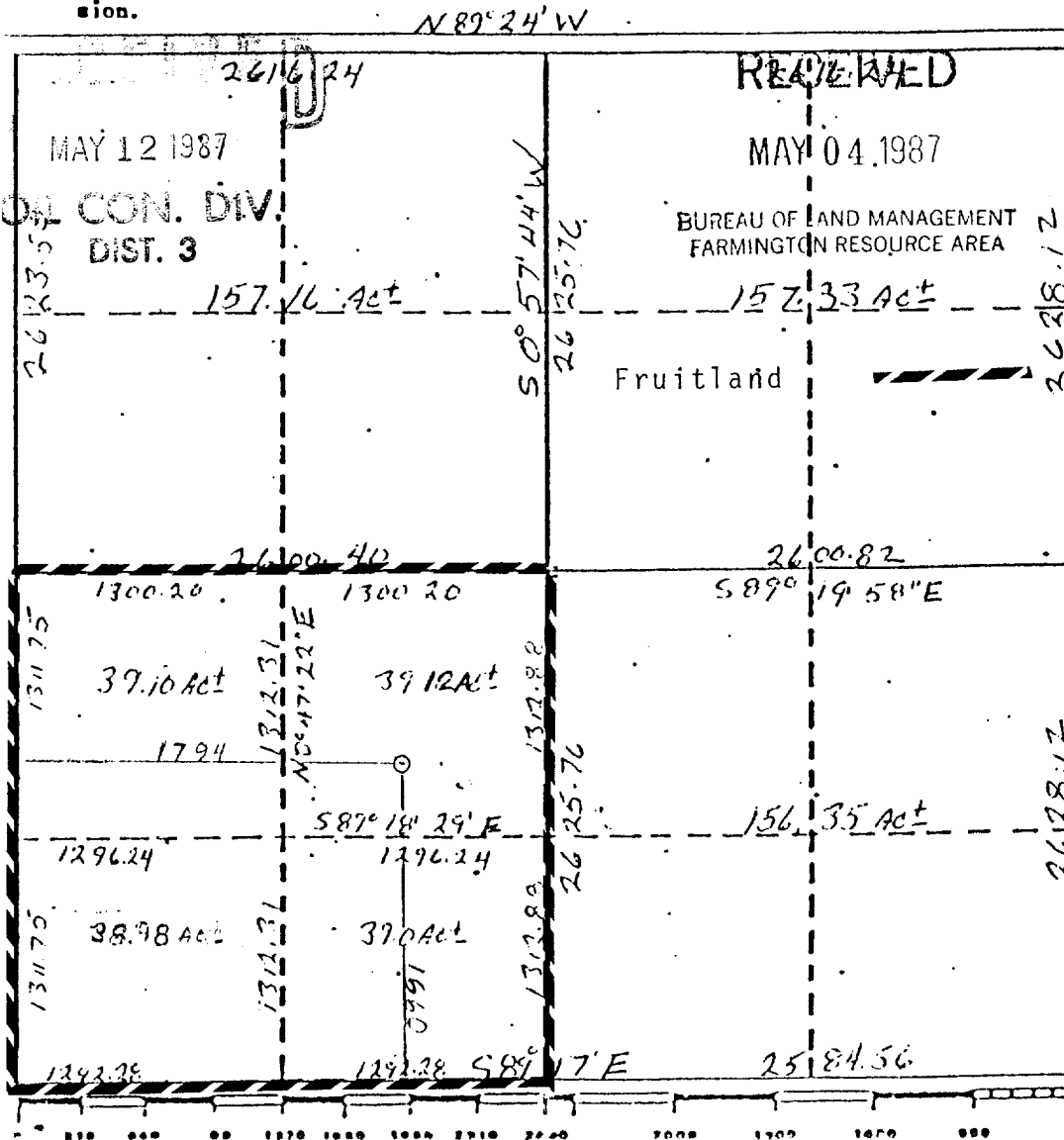
Operator UNION TEXAS PETROLEUM			Lease SEYMOUR		Well No. 10
Unit Letter K	Section 23	Township 31 N	Range 9 W	County San Juan	
Actual Footage Location of Well					
1660 feet from the South line and		1794 feet from the West line			
Ground Level Elev. 6401	Producing Formation Fruitland	Pool Sedro Canyon EXT	Dedicated Acreages SW/4 156 20 Acres		

1. Outline the acreage dedicated to the subject well by colored pencil or hatchure marks on the plat below.
2. If more than one lease is dedicated to the well, outline each and identify the ownership thereof (both as to working interest and royalty).
3. If more than one lease of different ownership is dedicated to the well, have the interests of all owners been consolidated by communitization, unitization, force-pooling, etc?

☐ Yes ☐ No If answer is "yes," type of consolidation _____

If answer is "no," list the owners and tract descriptions which have actually been consolidated. (Use reverse side of this form if necessary.) _____

No allowable will be assigned to the well until all interests have been consolidated (by communitization, unitization, forced-pooling, or otherwise) or until a non-standard unit, eliminating such interests, has been approved by the Commission.



CERTIFICATION

I hereby certify that the information contained herein is true and complete to the best of my knowledge and belief.

Robert C. Frank

Name
Robert C. Frank

Position
Permit Coordinator

Company
Union Texas Petroleum

Date
April 30, 1987

I hereby certify that the well location shown on this plat was plotted from field notes of actual surveys made by me or under my supervision, and that the same is true and correct to the best of my knowledge and belief.

Cecil B. Tullis

Date Surveyed
April 14 1987

Registered Professional Engineer and/or Land Surveyor

Cecil B. Tullis

Certificate No.
9672 Exhibit I

