

Gas produced from this well may not be vented or flared beyond an initial, authorized test period of \_\_\_\_\_\*\_\_\_\_\_ days or 50 MMcf following its (completion) (recompletion), whichever first occurs, without the prior, written approval of the authorized officer. Should gas be vented or flared without approval beyond the test period authorized above, you may be directed to shut-in the well until the gas can be captured or approval to continue venting or flaring as uneconomic is granted, and you shall be required to compensate the lessor for that portion of the gas vented or flared without approval which is determined to have been avoidably lost.

\* 30 days, unless a longer test period specifically is approved by the authorized officer. The 30 day period begins when the casing is FIRST perforated for cased holes, and when Total Depth (TD) is reached for open hole completion.

UNITED STATES  
DEPARTMENT OF THE INTERIOR  
BUREAU OF LAND MANAGEMENT

APPLICATION FOR PERMIT TO DRILL, DEEPEN, OR PLUG BACK

1a. TYPE OF WORK

DRILL ☒

DEEPEN ☐

PLUG BACK ☐

b. TYPE OF WELL

OIL  
WELL ☐

GAS  
WELL ☒

OTHER ☐

SINGLE  
ZONE ☒

MULTIPLE  
ZONE ☐

2. NAME OF OPERATOR

Union Texas Petroleum

3. ADDRESS OF OPERATOR

375 U.S. Highway 64, Farmington, NM 87401

4. LOCATION OF WELL (Report location clearly and in accordance with any State requirements.)

At surface

875' FNL & 1085' FEL

At proposed prod. zone

14. DISTANCE IN MILES AND DIRECTION FROM NEAREST TOWN OR POST OFFICE\*

10 miles NW of Archuleta, New Mexico

10. DISTANCE FROM PROPOSED\*

LOCATION TO NEAREST  
PROPERTY OR LEASE LINE, FT.  
(Also to nearest drlg. unit line, if any)

4358 from lease  
875 from DU

18. DISTANCE FROM PROPOSED LOCATION\*  
TO NEAREST WELL, DRILLING, COMPLETED,  
OR APPLIED FOR, ON THIS LEASE, FT.

156

16. NO. OF ACRES IN LEASE

2197.12

19. PROPOSED DEPTH

3450

17. NO. OF ACRES ASSIGNED  
TO THIS WELL

NE/4 158.99 acres

20. ROTARY OR CABLE TOOLS

Rotary

21. ELEVATIONS (Show whether DF, RT, GR, etc.)

6483 G.L. (graded)

DRILLING OPERATIONS AUTHORIZED ARE  
SUBJECT TO COMPLIANCE WITH ATTACHED  
"GENERAL REQUIREMENTS".

22. APPROX. DATE WORK WILL START\*

July 20, 1988

23.

PROPOSED CASING AND CEMENTING PROGRAM

This action is subject to technical and  
procedural review pursuant to 43 CFR 3165.3  
and appeal pursuant to 43 CFR 3165.4.

SIZE OF HOLE	SIZE OF CASING	WEIGHT PER FOOT	SETTING DEPTH	
12-1/4	9-5/8"	32.3	350	205 sx (242 cu.ft.)
8-3/4	7"	23.0	3450	390 sx (898 cu.ft.)

Union Texas Petroleum wishes to advise we intend to drill a 12-1/4" hole with mud to 350' and set 9-5/8", 32.3#, H-40, ST&C csg to 350', cementing to surface with 205 sx (242 cu.ft.) Cl "E" w/2% CaCl2 and 1/4# flocele/sk. Wait on cement 12 hours.

Nipple up, test BOP. Drill 8-3/4" hole with mud out of surface to 3450'. Log well. Set 7", 23#, N-80, LT&C csg to 3450', cementing to surface with 220 sx (631 cu.ft.) 65/35 POZ with 12% gel and 12-1/4# gilsonite/sk, tailed by 170 sx (267 cu.ft.) 50/50 POZ with 4% gel, 6-1/4# gilsonite/sk, and 10# salt/sk.

Following completion of the Fruitland, standard production equipment will be installed. We request permission to test this well into the reserve pit for a period of at least 90 days. Pipeline connection will be made by El Paso Natural Gas Company. Equip well with cathodic protection from the Quinn 4.

IN ABOVE SPACE DESCRIBE PROPOSED PROGRAM: If proposal is to deepen or plug back, give data on present productive zone and proposed new productive zone. If proposal is to drill or deepen directionally, give pertinent data on subsurface locations and measured and true vertical depths. Give blowout preventer program, if any.

24.

SIGNED

*Robert C. Frank*

TITLE

Permit Coordinator

DATE

5/19/88

(This space for Federal or State office use)

APPROVAL DATE

APPROVED BY

TITLE

DATE

CONDITIONS OF APPROVAL IF ANY:

NMOCC

\*See Instructions On Reverse Side

All distances must be from the outer boundaries of the Section.

Operator <b>UNION TEXAS PETROLEUM</b>			Lease <b>QUINN</b>		Well No. <b>11</b>
Unit Letter <b>A</b>	Section <b>19</b>	Township <b>31N</b>	Range <b>8W</b>	County <b>San Juan</b>	
Actual Footage Location of Well: 875 feet from the <b>North</b> line and 1085 feet from the <b>East</b> line					
Ground Level Elev. <b>6483</b>	Producing Formation <b>Fruitland</b>	Pool <b>Wildcat</b>		Dedicated Acreage: <b>16.1</b> <b>NE/4 158.99</b> Acres	

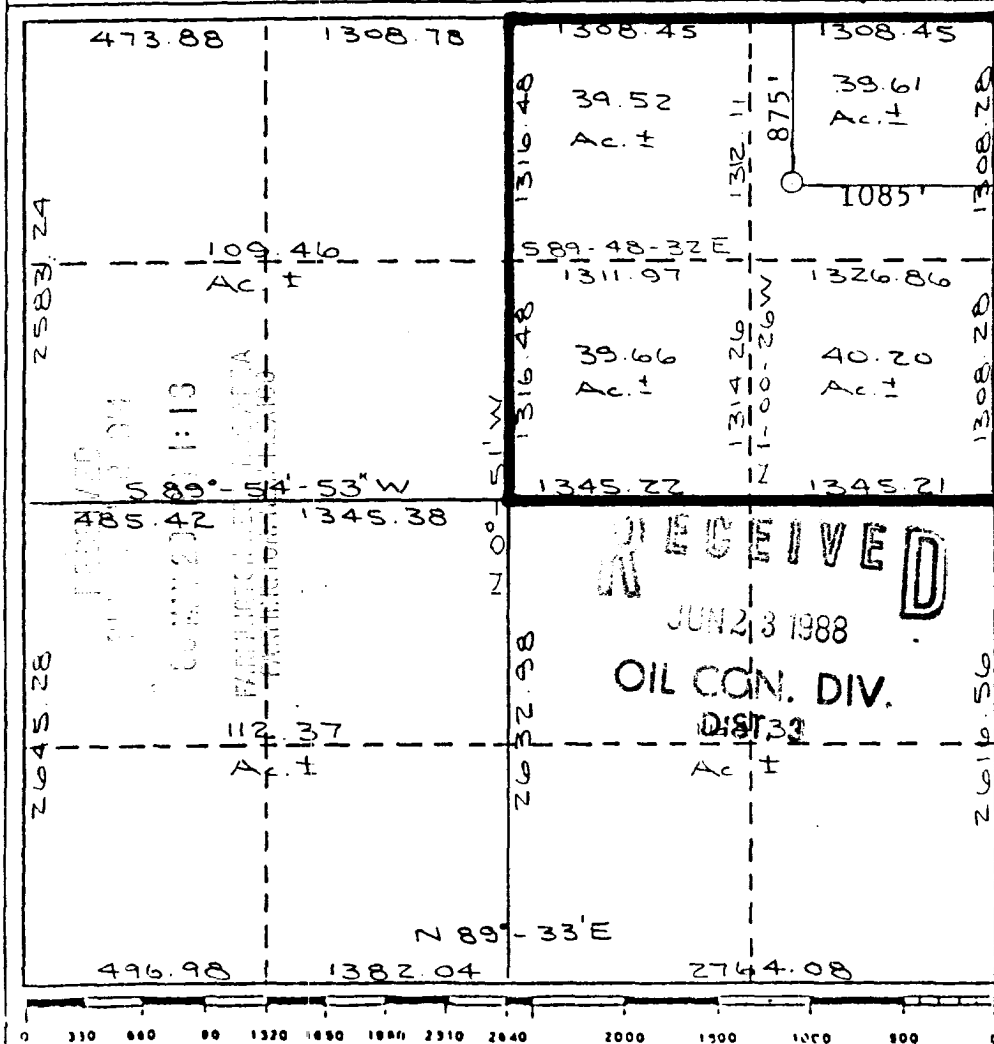
1. Outline the acreage dedicated to the subject well by colored pencil or hatchure marks on the plat below.
2. If more than one lease is dedicated to the well, outline each and identify the ownership thereof (both as to working interest and royalty).
3. If more than one lease of different ownership is dedicated to the well, have the interests of all owners been consolidated by communitization, unitization, force-pooling, etc?

☐ Yes ☐ No If answer is "yes," type of consolidation \_\_\_\_\_

If answer is "no," list the owners and tract descriptions which have actually been consolidated. (Use reverse side of this form if necessary.) \_\_\_\_\_

No allowable will be assigned to the well until all interests have been consolidated (by communitization, unitization, forced-pooling, or otherwise) or until a non-standard unit, eliminating such interests, has been approved by the Division.

N 89°-37' W



CERTIFICATION	
I hereby certify that the information contained herein is true and complete to the best of my knowledge and belief.	
<i>Robert C. Frank</i>	
Name	Robert C. Frank
Position	Permit Coordinator
Company	Union Texas Petroleum
Date	May 16, 1988
I have surveyed the location shown on this plat was taken from field notes and is correct to the best of my knowledge and belief.	
<i>Cecil B. Tullis</i>	
Date Surveyed	November 10, 1987
Registered Land Surveyor	
Cecil B. Tullis	
Certificate No.	9672

E.h.h.t

QUINN #11  
875F/NL & 1085 F/EL  
Sec. 19 T31N R8W N.M.P.M.  
San Juan Co. N.M.

Quintan  
Spring