

UNITED STATES
DEPARTMENT OF THE INTERIOR
BUREAU OF LAND MANAGEMENT

APPLICATION FOR PERMIT TO DRILL, DEEPEN, OR PLUG BACK

1a. TYPE OF WORK

DRILL ☒

DEEPEN ☐

PLUG BACK ☐

b. TYPE OF WELL

OIL WELL ☐

GAS WELL ☒

OTHER

SINGLE ZONE ☒

MULTIPLE ZONE ☐

2. NAME OF OPERATOR

Union Texas Petroleum Corporation

3. ADDRESS OF OPERATOR

P.O. Box 1290, Farmington, New Mexico 87499

4. LOCATION OF WELL (Report location clearly and in accordance with any State requirements.)*

At surface

1000' FSL; 1520' FEL

At proposed prod. zone

Same as above

14. DISTANCE IN MILES AND DIRECTION FROM NEAREST TOWN OR POST OFFICE*

10 miles Northwest of Navajo Dam, New Mexico

15. DISTANCE FROM PROPOSED*

LOCATION TO NEAREST

PROPERTY OR LEASE LINE, FT.

(Also to nearest drlg. unit line, if any)

1000'

1000'

18. DISTANCE FROM PROPOSED LOCATION*

TO NEAREST WELL, DRILLING, COMPLETED,

OR APPLIED FOR, ON THIS LEASE, FT.

3291'

16. NO. OF ACRES IN LEASE

2401.04

19. PROPOSED DEPTH

5970

17. NO. OF ACRES ASSIGNED TO THIS WELL

E/2 314.98

20. ROTARY OR CABLE TOOLS

Rotary

21. ELEVATIONS (Show whether DF, RT, GR, etc.)

6464 GR (Ungraded)

22. APPROX. DATE WORK WILL START*

August 15, 1984

DRILLING OPERATIONS AUTHORIZED ARE

SUBJECT TO CONDITIONS WITH ATTACHED

GENERAL CONDITIONS

PROPOSED CASING AND CEMENTING PROGRAM

This action is subject to administrative
approval pursuant to 20 CFR 290.

SIZE OF HOLE	SIZE OF CASING	WEIGHT PER FOOT	SETTING DEPTH	QUANTITY OF CEMENT
13-3/4	New 9-5/8"H40	36.0 #	(±)300'	170cu.ft. CL "B" 2% CaCl circ.
8-3/4	New 7" K55	23.0 #	(±)4300'	see below
6-1/4	New 4-1/2"K55	10.5 #	(±)4100'-5970'	see below

We desire to drill this well to the above described program. After setting surface casing, cement and wait on cement. Pressure test the surface casing and drill to approx. 4300'; log the hole and run intermediate casing to T.D. Cement with approx. 927 cu.ft. of 65/35 POZ with 6% Gel and 4957# of Gilsonite to circulate to the surface. Wait on cement. Pressure test the casing and drill to approx. 5970' using gas as the circulating medium. Log the hole and run casing on a liner hanger. Cement with approx. 299 cu.ft. of 50/50 POZ with 4% Gel, 1168# of Gilsonite to circulate to the liner hanger. Wait on cement and clean out. Pressure test casing. Perforate and fracture the Mesaverde zone utilizing a two stage frac treatment. Clean up the Mesaverde zone. Run one string of 2-3/8" J55 tubing and land in the Mesaverde zone. Nipple down the wellhead. Test the Mesaverde zone. Connect to a gathering system.

IN ABOVE SPACE DESCRIBE PROPOSED PROGRAM: If proposal is to deepen or plug back, give data on present productive zone and proposed new productive zone. If proposal is to drill or deepen directionally, give pertinent data on subsurface locations and measured and true vertical depths. Give blowout preventer program, if any.

24.

SIGNED

W. K. Coe

(This space for Federal or State office use)

TITLE Manager District Engineer

PERMIT NO.

APPROVAL DATE

APPROVED BY

CONDITIONS OF APPROVAL, IF ANY:

TITLE

DATE

AREA MANAGER

DATE FOR REGISTRATION

*See Instructions On Reverse Side

All distances must be from the outer boundaries of the Section.

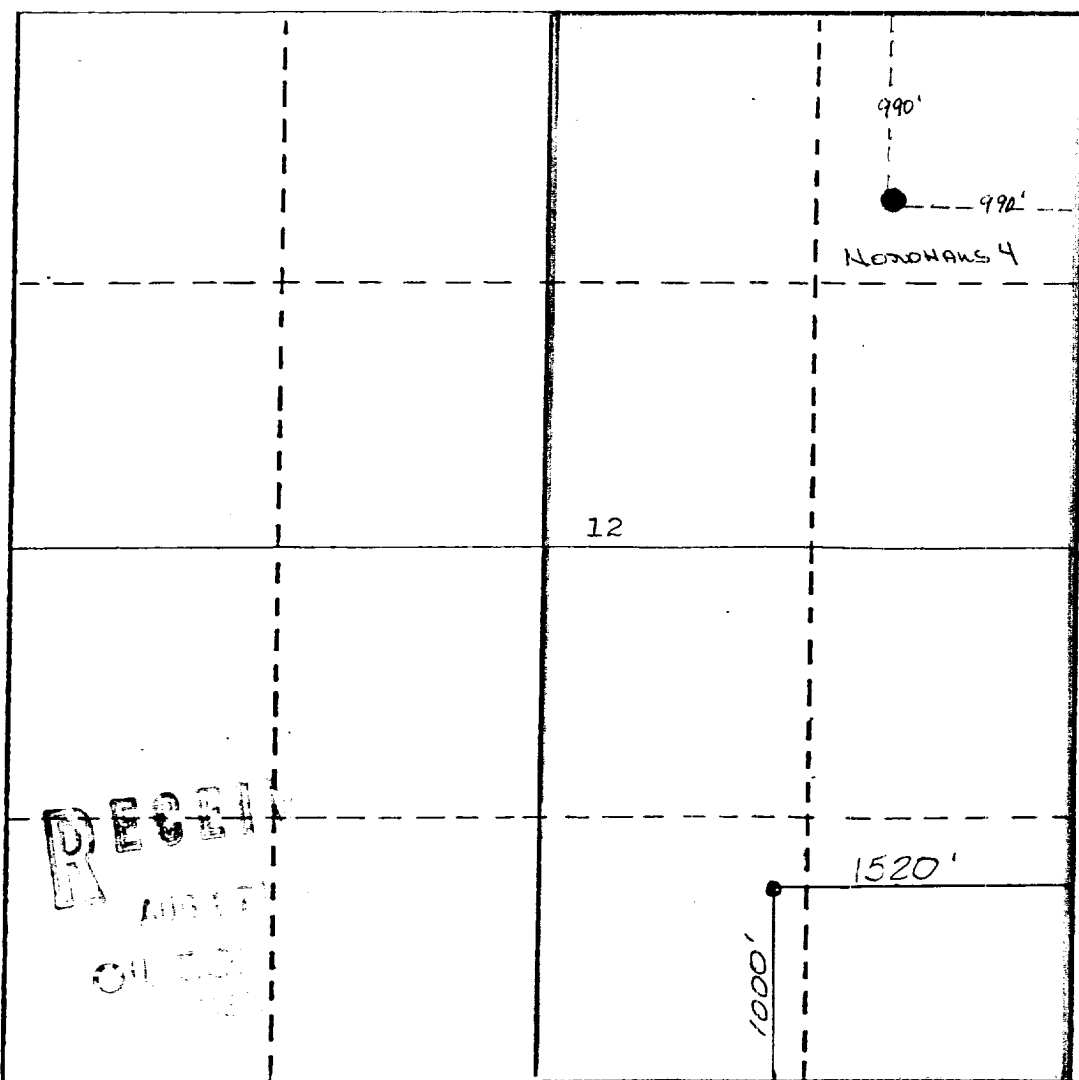
Operator UNION TEXAS PETROLEUM CORPORATION			Lease NORDHAUS		Well No. 4A
Unit Letter 0	Section 12	Township 31 NORTH	Range 9 WEST	County SAN JUAN	
Actual Footage Location of Well: 1000 feet from the SOUTH line and 1520 feet from the EAST line					
Ground Level Elev. 6464	Producing Formation Mesaverde		Pool Blanco	Dedicated Acreage: E/2 314.98	

1. Outline the acreage dedicated to the subject well by colored pencil or hatchure marks on the plat below.
2. If more than one lease is dedicated to the well, outline each and identify the ownership thereof (both as to working interest and royalty).
3. If more than one lease of different ownership is dedicated to the well, have the interests of all owners been consolidated by communitization, unitization, force-pooling, etc?

☐ Yes ☒ No — If answer is "yes," type of consolidation _____

If answer is "no," list the owners and tract descriptions which have actually been consolidated. (Use reverse side of this form if necessary.) Union Texas Exploration

No allowable will be assigned to the well until all interests have been consolidated (by communitization, unitization, forced-pooling, or otherwise) or until a non-standard unit, eliminating such interests, has been approved by the Division



CERTIFICATION

I hereby certify that the information contained herein is true and complete to the best of my knowledge and belief.

Name

Rudy D. Motto

Position

Area Operations Manager

Company

Union Texas Petroleum Corp.

Date

July 16, 1984

I hereby certify that the well location shown on this plat was plotted from field notes of actual surveys made by me or under my supervision, and that the same is true and correct to the best of my knowledge and belief.

Date Surveyed

February 6, 1984

Registered Professional Engineer
and/or Land Surveyor

Michael Daly

Certificate No.

5992

LEASE: SF 078508

NORDHAUS # 4A

1000' FSL & 1520' FEL

SEC. 12, T31N, R9W

SAN JUAN COUNTY, N.M.

2500' OF NEW ROAD IS NEEDED.

