

UNITED STATES
DEPARTMENT OF THE INTERIOR
BUREAU OF LAND MANAGEMENT

APPLICATION FOR PERMIT TO DRILL, DEEPEN, OR PLUG BACK

1. TYPE OF WORK

DRILL ☒

DEEPEN ☐

PLUG BACK ☐

2. TYPE OF WELL

OIL
WELL ☐

GAS
WELL ☒

OTHER ☐

SINGLE
ZONE ☒

MULTIPLE
ZONE ☐

3. NAME OF OPERATOR

Meridian Oil Inc.

4. ADDRESS OF OPERATOR

PO Box 4289, Farmington, NM 87499

5. LOCATION OF WELL (Report location clearly and in accordance with any State requirements.)

At surface
1455'N, 1585'E

At proposed prod. zone

6. DISTANCE IN MILES AND DIRECTION FROM NEAREST TOWN OR POST OFFICE*

9 miles from Aztec, NM

7. DISTANCE FROM PROPOSED*

LOCATION TO NEAREST
PROPERTY OR LEASE LINE, FT. 1455'
(Also to nearest drlg. unit line, if any)

8. DISTANCE FROM PROPOSED LOCATION*
TO NEAREST WELL, DRILLING COMPLETED,
OR APPLIED FOR, ON THIS LEASE, FT. 500'

9. NO. OF ACRES IN LEASE

10. PROPOSED DEPTH
3140'

11. NO. OF ACRES ASSIGNED
TO THIS WELL

12. ROTARY OR CABLE TOOLS
Rotary

13. ELEVATIONS (Show whether DF, RT, GR, etc.)
6488'GL

DRILLING OPERATIONS AUTHORIZED ARE
SUBJECT TO COMPLIANCE WITH ATTACHED

14. APPROX. DATE WORK WILL START*

15.

PROPOSED CASING AND CEMENTING PROGRAM

This action is subject to technical and
procedural review pursuant to 43 CFR 3165.3
and approval pursuant to 43 CFR 3165.4.

SIZE OF HOLE	SIZE OF CASING	WEIGHT PER FOOT	SETTING DEPTH	QUANTITY OF CEMENT
12 1/4"	9 5/8"	32.3#	200'	130 cf. circulated
8 3/4"	7"	20.0#	2930'	920 cf circ. surface
6 1/4"	5 1/2" liner	23.0#	3140'	do not cement

The Fruitland coal formation will be completed.

A 3000 psi WP and 6000 psi test double gate preventer equipped with
blind and pipe rams will be used for blow out prevention on this well.

This gas is dedicated.

The NE/4 of Section 10 is dedicated to this well.

RECEIVED

AUG 11 1988

OIL CON. DIV.

DIST. 3

IN ABOVE SPACE DESCRIBE PROPOSED PROGRAM: If proposal is to deepen or plug back, give data on present productive zone and proposed new productive zone. If proposal is to drill or deepen directionally, give pertinent data on subsurface locations and measured and true vertical depths. Give blowout preventer program, if any.

16.

SIGNED

[Signature]

TITLE

Regulatory Affairs

DATE

08-05-88

(This space for Federal or State office use)

PERMIT NO.

APPROVAL DATE

APPROVED

AS AMENDED

AUG 09 1988

AREA MANAGER

*See Instructions On Reverse Side

Title 18 U.S.C. Section 1001, makes it a crime for any person knowingly and willfully to make to any department or agency of the United States any false, fictitious or fraudulent statements or representations as to any matter within its jurisdiction.

All distances must be from the outer boundaries of the Section.

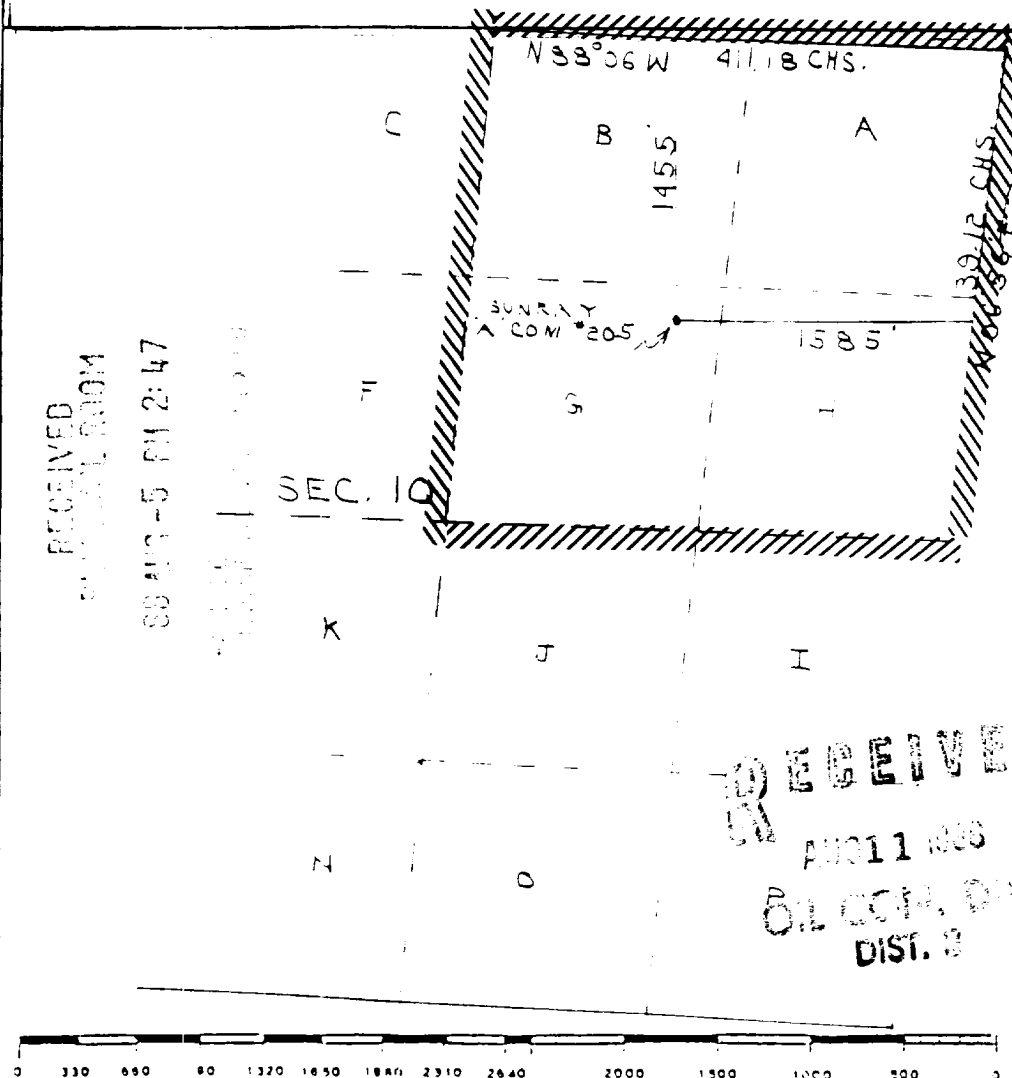
Operator Meridian Oil Co.		Lease Sunray A Com SF-078125		Well No. 205
Unit Letter G	Section 10	Township T30N	Range R10W	County San Juan County
Actual Footage Location of Well: 1455 feet from the North line and 1585 feet from the East line				
Ground Level Elev. 6488	Producing Formation Fruitland Coal	Pool Undesignated	Dedicated Acreage: 158.2 Acres	

1. Outline the acreage dedicated to the subject well by colored pencil or hachure marks on the plat below.
2. If more than one lease is dedicated to the well, outline each and identify the ownership thereof (both as to working interest and royalty).
3. If more than one lease of different ownership is dedicated to the well, have the interests of all owners been consolidated by communitization, unitization, force-pooling, etc?

☒ Yes ☐ No If answer is "yes," type of consolidation communitization

If answer is "no," list the owners and tract descriptions which have actually been consolidated. (Use reverse side of this form if necessary.)

No allowable will be assigned to the well until all interests have been consolidated (by communitization, unitization, forced-pooling, or otherwise) or until a non-standard unit, eliminating such interests, has been approved by the Division.



CERTIFICATION

I hereby certify that the information contained herein is true and complete to the best of my knowledge and belief.

Name
Drilling Clerk

Position
Meridian Oil Inc.

Company
Meridian

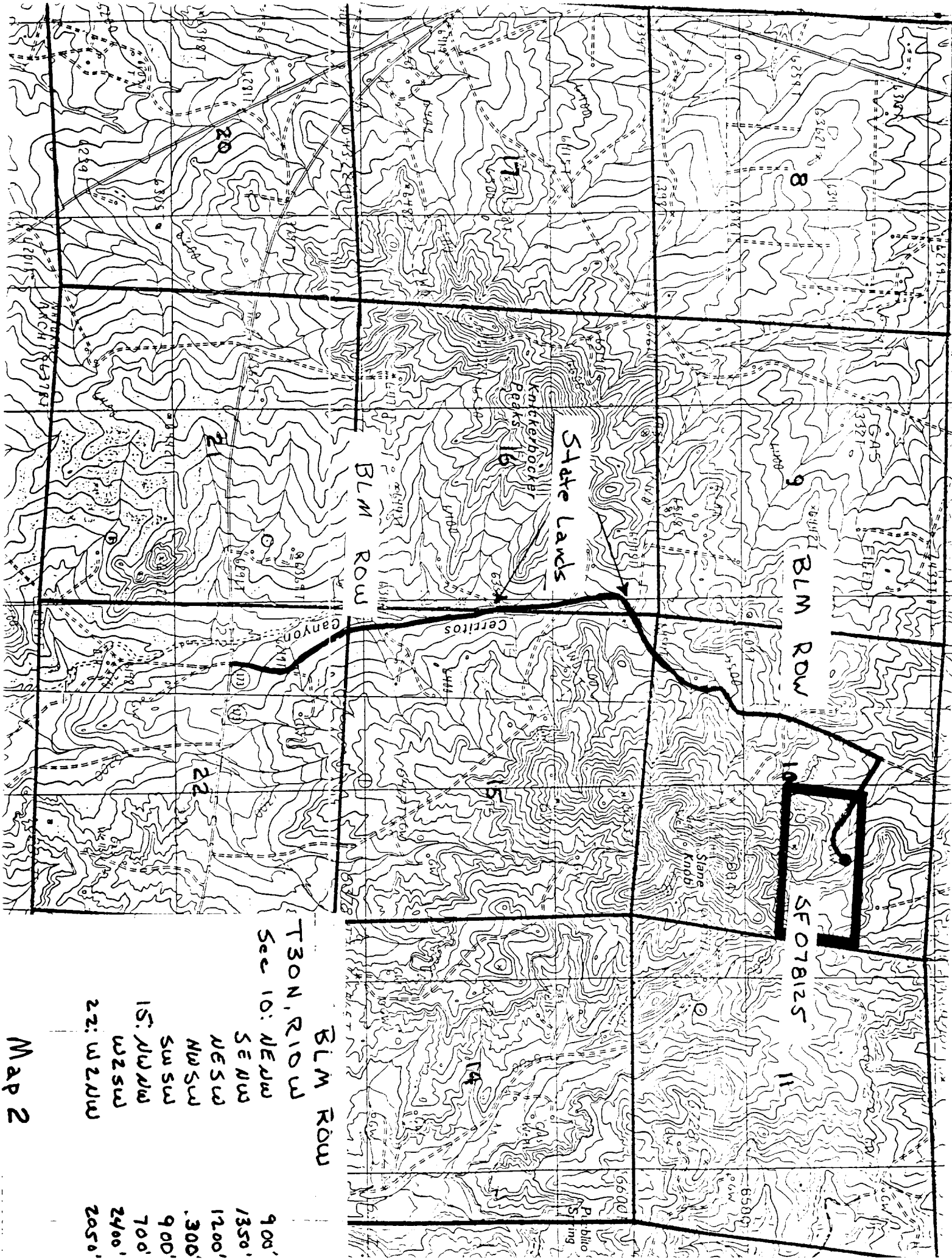
Date

I hereby certify that the well location shown on this plat was plotted from field notes of actual surveys made by me or under my supervision, and that the same are true and correct to the best of my knowledge and belief.

Date Surveyed
June 18, 1988

Registered Professional Land Surveyor
R. Howard Dagg

Certificate No.
9679



8

9

BLM ROW

10

SE 078125

11

State Lands

Knickerbocker
Peaks 16

BLM ROW

Ceritos

Canyon

State
Knobs

P. blio
sing

BLM ROW

T30N, R10W

Sec 10: NE NW

SE NW

NE SW

NW SW

SW SW

15: NW NW

W2 SW

22: W2 NW

Map 2

- 900'
- 1350'
- 1200'
- .300'
- 900'
- 700'
- 2400'
- 2050'