

UNITED STATES
DEPARTMENT OF THE INTERIOR
BUREAU OF LAND MANAGEMENT

APPLICATION FOR PERMIT TO DRILL, DEEPEN, OR PLUG BACK

1a. TYPE OF WORK
 DRILL DEEPEN PLUG BACK
 b. TYPE OF WELL
 OIL WELL GAS WELL OTHER
 SINGLE ZONE MULTIPLE ZONE

2. NAME OF OPERATOR
Meridian Oil Inc.

3. ADDRESS OF OPERATOR
PO Box 4289, Farmington, NM 87499

4. LOCATION OF WELL (Report location clearly and in accordance with any State requirements.)
 At surface 1545'N, 1645'W
 At proposed prod. zone

14. DISTANCE IN MILES AND DIRECTION FROM NEAREST TOWN OR POST OFFICE*
10 miles from Navajo Dam, NM

15. DISTANCE FROM PROPOSED* LOCATION TO NEAREST PROPERTY OR LEASE LINE, FT. (Also to nearest drig. unit line, if any)
1545'

16. NO. OF ACRES IN LEASE
160.00

17. NO. OF ACRES ASSIGNED TO THIS WELL
160.00

18. DISTANCE FROM PROPOSED LOCATION* TO NEAREST WELL, DRILLING, COMPLETED, OR APPLIED FOR, ON THIS LEASE, FT.
300'

19. PROPOSED DEPTH
3020'

20. ROTARY OR CABLE TOOLS
Rotary

21. ELEVATIONS (Show whether DF, RT, GR, etc.)
6165' GL

5. LEASE DESIGNATION AND SERIAL NO.
SF-078129
 6. IF INDIAN, ALLOTTEE OR TRIBE NAME
 7. UNIT AGREEMENT NAME
 8. FARM OR LEASE NAME
Pierce
 9. WELL NO.
252
 10. FIELD AND POOL, OR WILDCAT
Undes. Fruitland Coal
 11. SEC., T., E., M., OR BLE. AND SURVEY OR AREA
Sec. 17, T-30-N, R-9-W
NMPM F
 12. COUNTY OR PARISH
San Juan
 13. STATE
NM

23. DRILLING OPERATIONS AUTHORIZED ARE SUBJECT TO COMPLIANCE WITH ATTACHED PROPOSED CASING AND CEMENTING PROGRAM "GENERAL REQUIREMENTS".

This action is subject to technical and procedural review pursuant to 43 CFR 3165.3 and appeal pursuant to 43 CFR 3165.4.

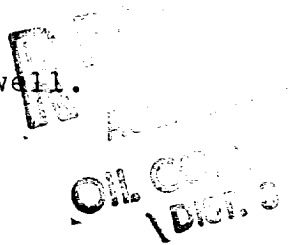
SIZE OF HOLE	SIZE OF CASING	WEIGHT PER FOOT	SETTING DEPTH	
12 1/4"	9 5/8"	32.3#	200'	130 cf. circulated
8 3/4"	7"	20.0#	2885'	910 cf circ. surface
6 1/4"	5 1/2" liner	23.0#	3020'	do not cement

The Fruitland coal formation will be completed.

A 3000 psi WP and 6000 psi test double gate preventer equipped with blind and pipe rams will be used for blow out prevention on this well.

This gas is dedicated.

The NW/4 of Section 17 is dedicated to this well.



IN ABOVE SPACE DESCRIBE PROPOSED PROGRAM: If proposal is to deepen or plug back, give data on present productive zone and proposed new productive zone. If proposal is to drill or deepen directionally, give pertinent data on subsurface locations and measured and true vertical depths. Give blowout preventer program, if any.

24. SIGNED [Signature] TITLE Regulatory Affairs DATE 07-21-88

APPROVAL OF THIS ACTION DOES NOT WARRANT THAT THE OPERATIONS HEREIN ARE LEGAL OR THAT THE RIGHTS OR TITLE TO THE LEASE.

APPROVED BY [Signature] TITLE ASST. DIR. DATE AUG 1 1988

*See Instructions On Reverse Side

All distances must be from the outer boundaries of the Section.

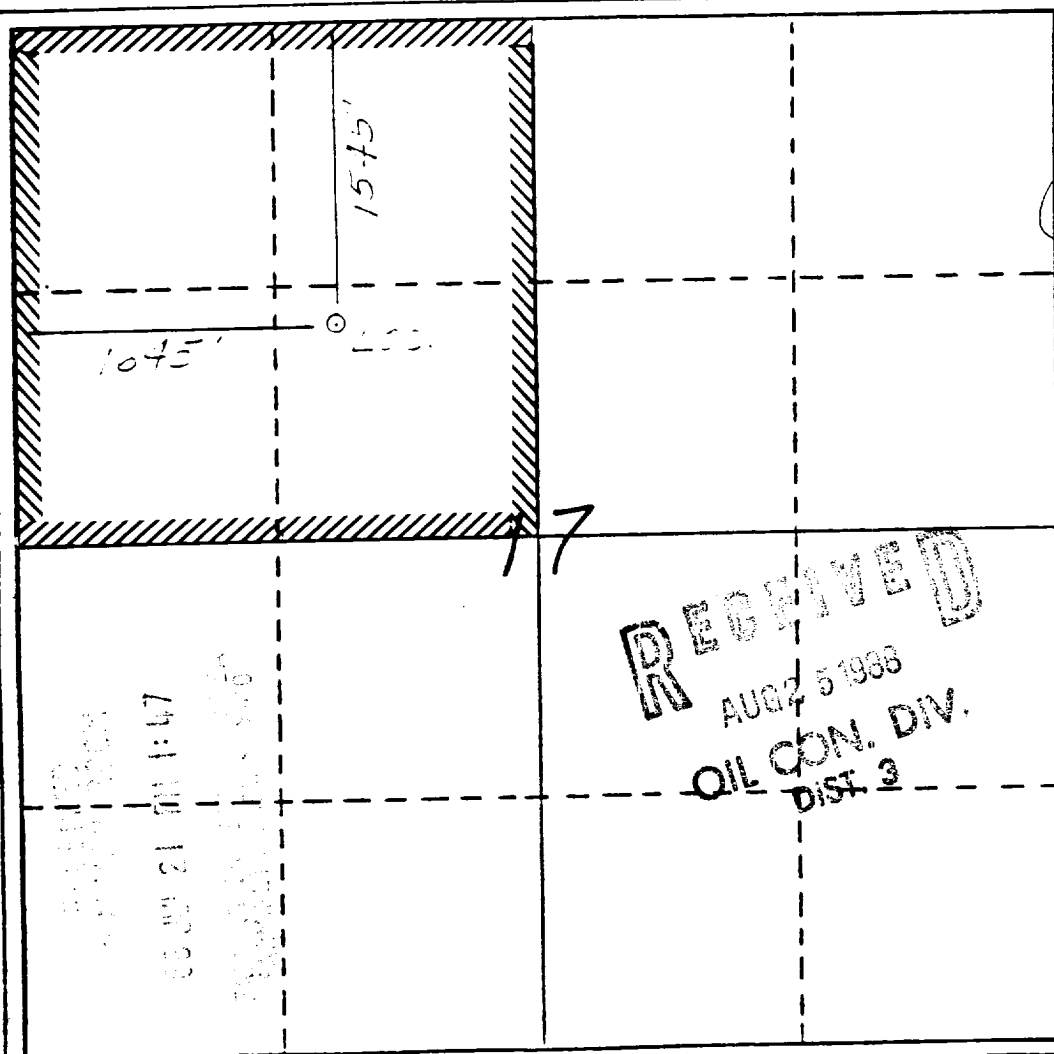
Operator Meridian Oil Inc.		Lease Pierce (SF-078129)		Well No. 252
Unit Letter F	Section 17	Township 30 North	Range 9 West	County San Juan
Actual Postage Location of Well: 1545 feet from the North line and 1645 feet from the West line				
Ground Level Elev. 6340'	Producing Formation Fruitland Coal	Pool Undesignated	Dedicated Acreage: 160 Acres	

1. Outline the acreage dedicated to the subject well by colored pencil or hachure marks on the plat below.
2. If more than one lease is dedicated to the well, outline each and identify the ownership thereof (both as to working interest and royalty).
3. If more than one lease of different ownership is dedicated to the well, have the interests of all owners been consolidated by communitization, unitization, force-pooling, etc?

Yes No If answer is "yes," type of consolidation _____

If answer is "no," list the owners and tract descriptions which have actually been consolidated. (Use reverse side of this form if necessary.) _____

No allowable will be assigned to the well until all interests have been consolidated (by communitization, unitization, forced-pooling, or otherwise) or until a non-standard unit, eliminating such interests, has been approved by the Division



CERTIFICATION

I hereby certify that the information contained herein is true and complete to the best of my knowledge and belief.

Neale C. Edwards

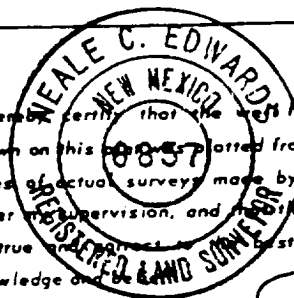
Name
Drilling Clerk

Position
Meridian Oil Inc.

Company
7-21-88

Date

I hereby certify that the well location shown on this plat was plotted from field notes of actual surveys made by me or under my supervision, and that the same is true to the best of my knowledge and belief.



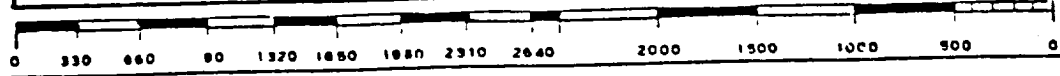
Neale C. Edwards

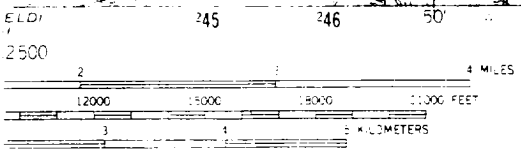
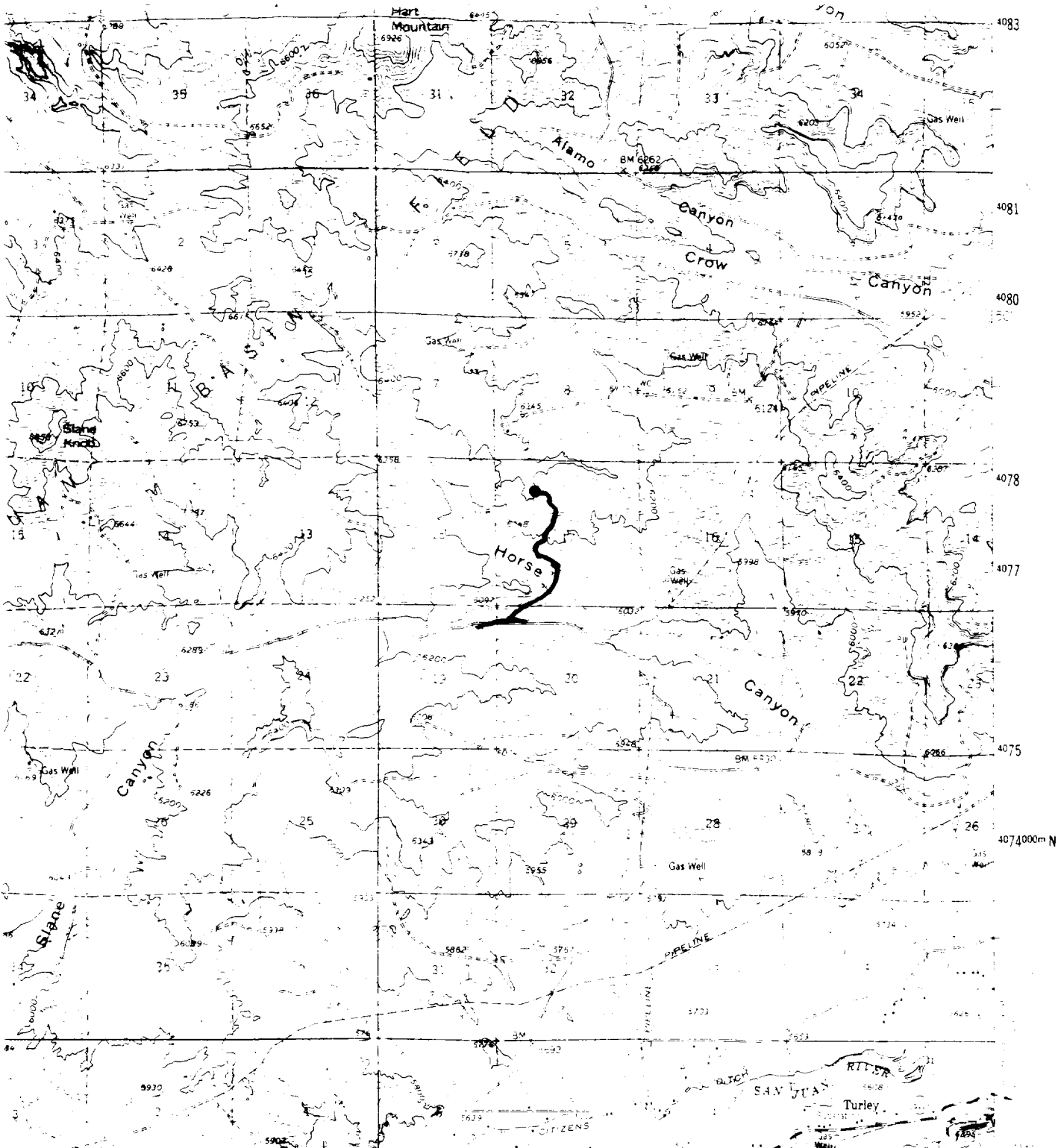
Date Surveyed
6-13-88

Registered Professional Engineer and/or Land Surveyor

Neale C. Edwards

Certificate No.
6857





**PIERCE 252
NW 17-30-9**

ROAD CLASSIFICATION

Medium duty	— — — — —	Light duty	— — — — —
Unimproved dirt	— — — — —		
U.S. Route	— — — — —	State Route	— — — — —

MAP ACCURACY STANDARDS
COLORADO 80225 OR WASHINGTON, D. C. 2024
AND SYMBOLS IS AVAILABLE ON REQUEST

QUADRANGLE LOCATION

AZTEC N. MEX.
N3645 - W10745/15

1955

AMS 4457 IV-SERIES V781

TWO 1/2 IN. PASS
4457 IV