

UNITED STATES  
DEPARTMENT OF THE INTERIOR  
BUREAU OF LAND MANAGEMENT

APPLICATION FOR PERMIT TO DRILL, DEEPEN, OR PLUG BACK

1a. TYPE OF WORK

DRILL ☒

DEEPEN ☐

PLUG BACK ☐

b. TYPE OF WELL

OIL  
WELL ☐

GAS  
WELL ☒

OTHER

SINGLE  
ZONE ☒

MULTIPLE  
ZONE ☐

2. NAME OF OPERATOR

Meridian Oil Inc.

3. ADDRESS OF OPERATOR

PO Box 4289, Farmington, NM 87499

4. LOCATION OF WELL (Report location clearly and in accordance with any State requirements.)

At surface  
1180'N, 605'E

At proposed prod. zone

14. DISTANCE IN MILES AND DIRECTION FROM NEAREST TOWN OR POST OFFICE\*

10 miles from Aztec, NM

15. DISTANCE FROM PROPOSED\*

LOCATION TO NEAREST  
PROPERTY OR LEASE LINE, FT.  
(Also to nearest drig. unit line, if any)

605'

19. DISTANCE FROM PROPOSED LOCATION\*  
TO NEAREST WELL, DRILLING, COMPLETED,  
OR APPLIED FOR, ON THIS LEASE, FT.

400'

16. NO. OF ACRES IN LEASE

1672

17. NO. OF ACRES ASSIGNED  
TO THIS WELL

160.00 22.74

20. PROPOSED DEPTH

3043'

21. ROTARY OR CABLE TOOLS

Rotary

22. ELEVATIONS (Show whether DF, RT, GR, etc.)

6337' GLOPPLING OPERATIONS AUTHORIZED ARE

23.

COMPLIANCE WITH ATTACHED  
PROPOSED CASING AND CEMENTING PROGRAM

This action is subject to technical and  
procedural review pursuant to 43 CFR 31.25.3  
and appeal pursuant to 43 CFR 31.65.4

SIZE OF HOLE	SIZE OF CASING	WEIGHT PER FOOT	SETTING DEPTH	
12 1/4"	9 5/8"	32.3#	200'	130 cf. circulated
8 3/4"	7"	20.0#	2910'	920 cf. circ. surface
6 1/4"	5 1/2" liner	23.0#	3043'	do not cement

The Fruitland coal formation will be completed.

A 3000 psi WP and 6000 psi test double gate preventer equipped with  
blind and pipe rams will be used for blow out prevention on this well.

This gas is dedicated.

The NE/4 of Section 12 is dedicated to this well.

RECEIVED

IN ABOVE SPACE DESCRIBE PROPOSED PROGRAM: If proposal is to deepen or plug back, give data on present productive zone and proposed new productive  
zone. If proposal is to drill or deepen directionally, give pertinent data on subsurface locations and measured and true vertical depths. Give blowout  
preventer program, if any.

24.

SIGNED

*[Signature]*

TITLE

Regulatory Affairs DATE 07-22-88

(This space for Federal or State office use)

PERMIT NO.

APPROVAL DATE

APPROVED BY

TITLE

DATE

CONDITIONS OF APPROVAL, IF ANY:

1154-2563

NMOCC

\*See Instructions On Reverse Side

All distances must be from the outer boundaries of the Section.

Operator Meridian Oil Co.			Lease Grambling C SF-078200A		Well No. 200
Unit Letter A	Section 12	Township T30N	Range R10W	County San Juan County	
Actual Footage Location of Wells 1180 feet from the North line and 605 feet from the East line					
Ground Level Elev. 6337	Producing Formation Fruitland Coal	Pool Undesignated		Dedicated Acreage: 19.74 Acres	

1. Outline the acreage dedicated to the subject well by colored pencil or hachure marks on the plat below.
2. If more than one lease is dedicated to the well, outline each and identify the ownership thereof (both as to working interest and royalty).
3. If more than one lease of different ownership is dedicated to the well, have the interests of all owners been consolidated by communitization, unitization, force-pooling, etc?

☐ Yes ☐ No If answer is "yes," type of consolidation \_\_\_\_\_

If answer is "no," list the owners and tract descriptions which have actually been consolidated. (Use reverse side of this form if necessary.) \_\_\_\_\_

No allowable will be assigned to the well until all interests have been consolidated (by communitization, unitization, forced-pooling, or otherwise) or until a non-standard unit, eliminating such interests, has been approved by the Division.  
Reissued to show moved location.

CERTIFICATION

I hereby certify that the information contained herein is true and complete to the best of my knowledge and belief.

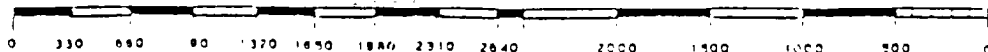
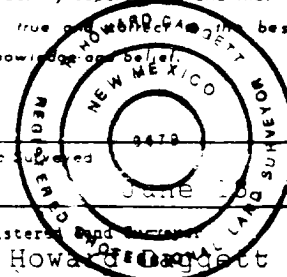
Name  
Drilling Clerk  
Position  
Meridian Oil Inc.  
Company  
Date

I hereby certify that the well location shown on this plat was plotted from field notes of actual surveys made by me or under my supervision, and that the same is true and correct to the best of my knowledge and belief.

Date Surveyed  
June 10, 1988  
Registered and Certified  
R. Howard  
Registered Professional  
Lead Surveyor  
Certificate No.  
9679

Note: Non-Standard Loc.  
due to Exist. well  
& pipelines.

RECEIVED  
SEP 6 1988  
OIL CON. DIV.  
DIST. 3



Caballero Spring

9

46

21

Canyon

Piñales

Canyon

20

Pemada

Sánchez Spring

Banco Spring

Vereda

19

Piñales Spring

18

24

Pueblito Spring

13

Bonnie Rock

11

14

23



STATE OF NEW MEXICO

ENERGY, MINERALS AND NATURAL RESOURCES DEPARTMENT

OIL CONSERVATION DIVISION

GARREY CARRUTHERS  
GOVERNOR

POST OFFICE BOX 2088  
STATE LAND OFFICE BUILDING  
SANTA FE, NEW MEXICO 87504  
(505) 827-5800

August 24, 1988

Meridian Oil, Inc.  
P.O. Box 4289  
Farmington, NM 87499-4289

Attention: Peggy Doak

Administrative Order NSL-2563

Dear Ms. Doak:

Reference is made to your application of July 13, 1988 for a non-standard gas well location for your Grambling "C" Well No. 200 to be located 1180 feet from the North line and 605 feet from the East line (Unit A) of Section 12, Township 30 North, Range 10 West, NMPM, Undesignated Blanco Fruitland Pool, San Juan County, New Mexico. The applicant proposes to dedicated Lots 1, 2, 7 and 8 of said Irregular Section 12 to the well forming a non-standard 142.74 acre, more or less, gas spacing and proration unit for said pool.

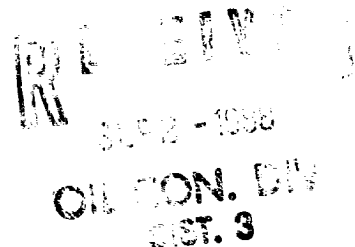
By the authority granted me under the provisions of General Rule 104 F(I), the above-described unorthodox gas well location is hereby approved.

Sincerely,

William J. LeMay  
Director

WJL/DRC/ag

cc: Oil Conservation Division - Aztec  
US Bureau of Land Management - Farmington





STATE OF NEW MEXICO  
ENERGY AND MINERALS DEPARTMENT  
OIL CONSERVATION DIVISION  
AZTEC DISTRICT OFFICE

10000 1001 100205 10000  
AZTEC, NEW MEXICO 87410  
(505) 334-6178

OIL CONSERVATION DIVISION  
BOX 2088  
SANTA FE, NEW MEXICO 87501

DATE 8-9-88

RE: Proposed HC \_\_\_\_\_  
Proposed DHC \_\_\_\_\_  
Proposed NSL X \_\_\_\_\_  
Proposed SWD \_\_\_\_\_  
Proposed WFX \_\_\_\_\_  
Proposed PMX \_\_\_\_\_

Gentlemen:

I have examined the application dated 8-7-88  
for the MERTON OIL INC. GRAMBLING C#200 A-12-300-100  
Operator Lease and Well No. Unit, S-T-R

and my recommendations are as follows:

Approved  
\_\_\_\_\_  
\_\_\_\_\_  
\_\_\_\_\_  
\_\_\_\_\_

Yours truly,

E. P. [Signature]

# MERIDIAN OIL

July 13, 1988

Mr. William LeMay  
New Mexico Oil Conservation Division  
Post Office Box 2088  
Santa Fe, New Mexico 87501

Dear Mr. LeMay:

This is a request for administrative approval for an unorthodox gas well location in the Undesignated Fruitland Coal Pool.

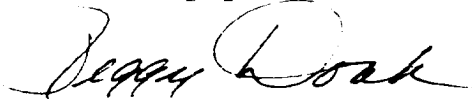
A request for non-standard location for the Grambling C #200 was previously sent to you showing the location to be 1150'N, 605'E, Section 12, T-30-N, R-10-W. It is now intended to locate the Meridian Oil Inc.'s Grambling C #200 at 1180' from the North line and 605' from the East line of Section 12, T-30-N, R-10-W, San Juan County, New Mexico.

Extremely rough terrain in the form of steep cliffs and an existing pipeline makes it impossible to build an orthodox location in the northeast quarter of this section.

Meridian Oil Inc. is the offsetting operator for this location.

Plats showing the proposed well location and the terrain in Section 12, along with an ownership plat, are attached.

Sincerely yours,



Peggy Doak

encl.

Caball  
Springs

9

Grande

21

Canyon

Sanchez  
Spring

Pilares

Canyon

Pemada

20

Banco  
Spring

Vereda

19

Pilares  
Spring

13

24

Pueblito  
Spring

Bonnie  
Rock

23

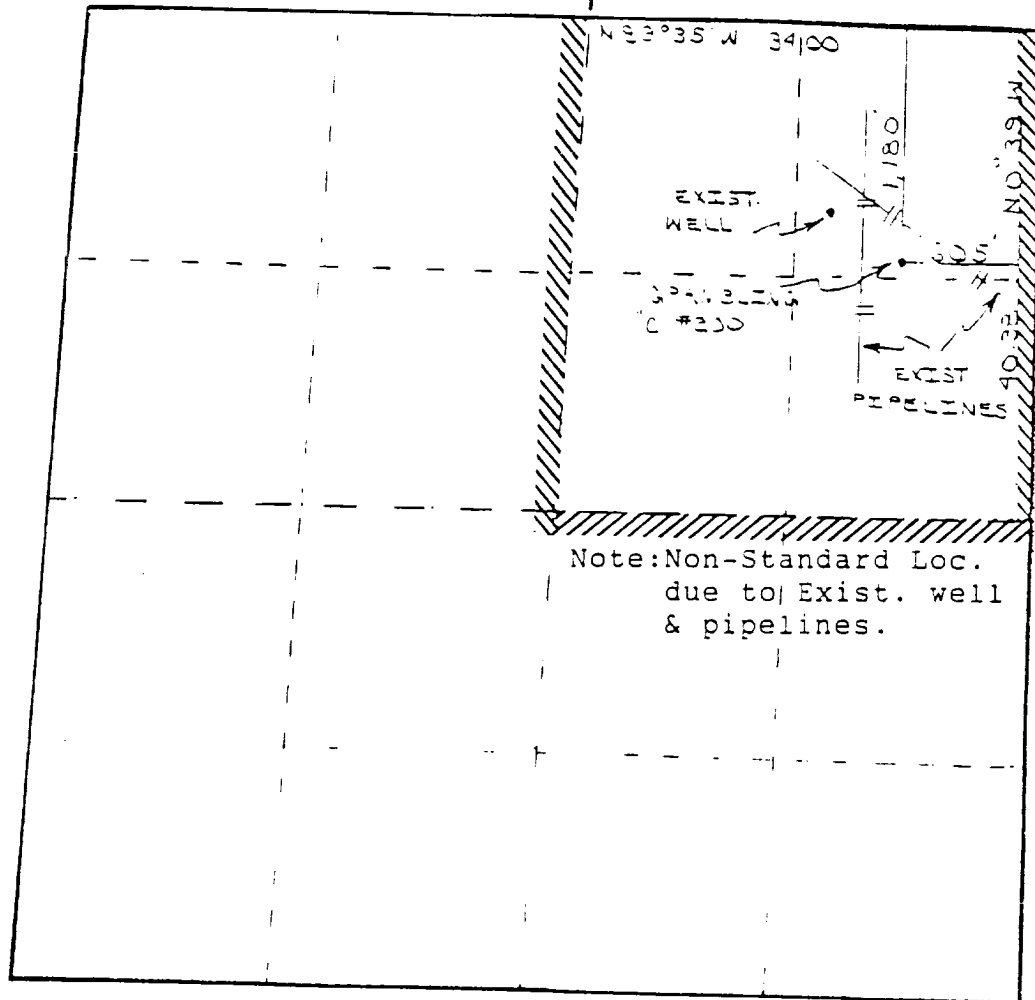
MERIDIAN OIL INC.

Well Name Grambling C #200, Undesignated Fruitland

Footage---- 1180' FNL; 605' FEL

APPLICATION FOR NON-STANDARD LOCATION

County San Juan State New Mexico Section 12 Township 30N Range 10W



REMARKS: OFFSET OPERATOR.

ALL -- Meridian Oil Inc.