

UNITED STATES
DEPARTMENT OF THE INTERIOR
BUREAU OF LAND MANAGEMENT

APPLICATION FOR PERMIT TO DRILL, DEEPEN, OR PLUG BACK

1a. TYPE OF WORK

DRILL ☒

DEEPEN ☐

PLUG BACK ☐

b. TYPE OF WELL

OIL WELL ☐

GAS WELL ☒

OTHER

2. NAME OF OPERATOR

Meridian Oil Inc.

3. ADDRESS OF OPERATOR

PO Box 4289, Farmington, NM 87499

4. LOCATION OF WELL (Report location clearly and in accordance with any State requirements.)*

At surface
845' N, 1590' W

At proposed prod. zone

14. DISTANCE IN MILES AND DIRECTION FROM NEAREST TOWN OR POST OFFICE*

6 miles from Blanco, NM

15. DISTANCE FROM PROPOSED*

LOCATION TO NEAREST
PROPERTY OR LEASE LINE, FT.
(Also to nearest drig. unit line, if any)

845'

18. DISTANCE FROM PROPOSED LOCATION*
TO NEAREST WELL, DRILLING, COMPLETED,
OR APPLIED FOR, ON THIS LEASE, FT.

400'

16. NO. OF ACRES IN LEASE

315.68

19. PROPOSED DEPTH

2644'

17. NO. OF ACRES ASSIGNED
TO THIS WELL

160.00 158.30

20. ROTARY OR CABLE TOOLS

Rotary

21. ELEVATIONS (Show whether D.F., B.T., GR., etc.)

6084' GL DRILLING OPERATIONS AUTHORIZED ARE

SUBJECT TO COMPLIANCE WITH ATTACHED
"GENERAL REQUIREMENTS"

22. APPROX. DATE WORK WILL START*

This action is subject to technical and
procedural review pursuant to 43 CFR 3165.3
and appeal pursuant to 43 CFR 3165.4.

SIZE OF HOLE	SIZE OF CASING	WEIGHT PER FOOT	SETTING DEPTH	QUANTITY OF CEMENT
12 1/4"	9 5/8"	32.3#	200'	30 cf. circulated
8 3/4"	7"	20.0#	2442'	90 cf circ. surface
6 1/4"	5 1/2" liner	23.0#	2644'	do not cement

The Fruitland coal formation will be completed.

A 3000 psi WP and 6000 psi test double gate preventer equipped with
blind and pipe rams will be used for blow out prevention on this well.

This gas is dedicated.

The NW/4 of Section 25 is dedicated to this well.

RECEIVED
AUG 31 1988

OIL CON. DIV
DIST. 3

IN ABOVE SPACE DESCRIBE PROPOSED PROGRAM: If proposal is to deepen or plug back, give data on present productive zone and proposed new productive
zone. If proposal is to drill or deepen directionally, give pertinent data on subsurface locations and measured and true vertical depths. Give blowout
preventer program, if any.

24.

SIGNED [Signature] TITLE Regulatory Affairs DATE 08-18-88

(This space for Federal or State office use)

Approval of this action does
not warrant that the applicant

holds legal or equitable rights
or title to this lease."

APPROVAL DATE

APPROVED

AS AMENDED ^{KH}

AUG 29 1988

AREA MANAGER

*See Instructions On Reverse Side

All distances must be from the outer boundaries of the Section.

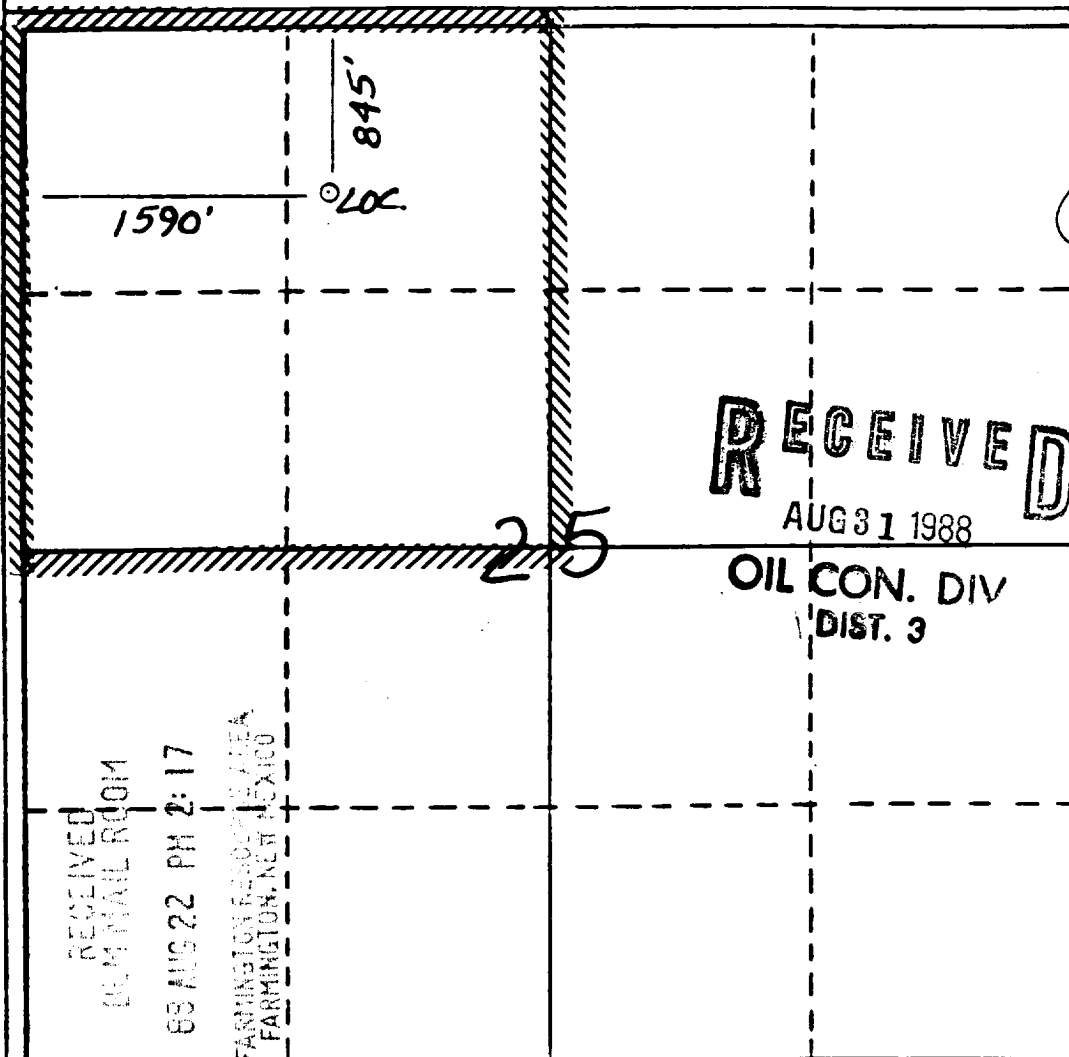
Operator Meridian Oil Inc,		Lease Florance A (SF-080776A)		Well No. 210
Unit Letter C	Section 25	Township 30 North	Range 10 West	County San Juan
Actual Postage Location of Wells 845 feet from the North line and 1590 feet from the West line				
Ground Level Elev. 6084'	Producing Formation Fruitland Coal	Pool Undesignated	Dedicated Acreage: 160.00 158.30 Acres	

1. Outline the acreage dedicated to the subject well by colored pencil or hatchure marks on the plat below.
2. If more than one lease is dedicated to the well, outline each and identify the ownership thereof (both as to working interest and royalty).
3. If more than one lease of different ownership is dedicated to the well, have the interests of all owners been consolidated by communitization, unitization, force-pooling, etc?

☐ Yes ☐ No If answer is "yes," type of consolidation _____

If answer is "no," list the owners and tract descriptions which have actually been consolidated. (Use reverse side of this form if necessary.) _____

No allowable will be assigned to the well until all interests have been consolidated (by communitization, unitization, forced-pooling, or otherwise) or until a non-standard unit, eliminating such interests, has been approved by the Division



CERTIFICATION

I hereby certify that the information contained herein is true and complete to the best of my knowledge and belief.

Name
Regulatory Affairs
Position
Meridian Oil Inc.
Company

Date

8-19-88

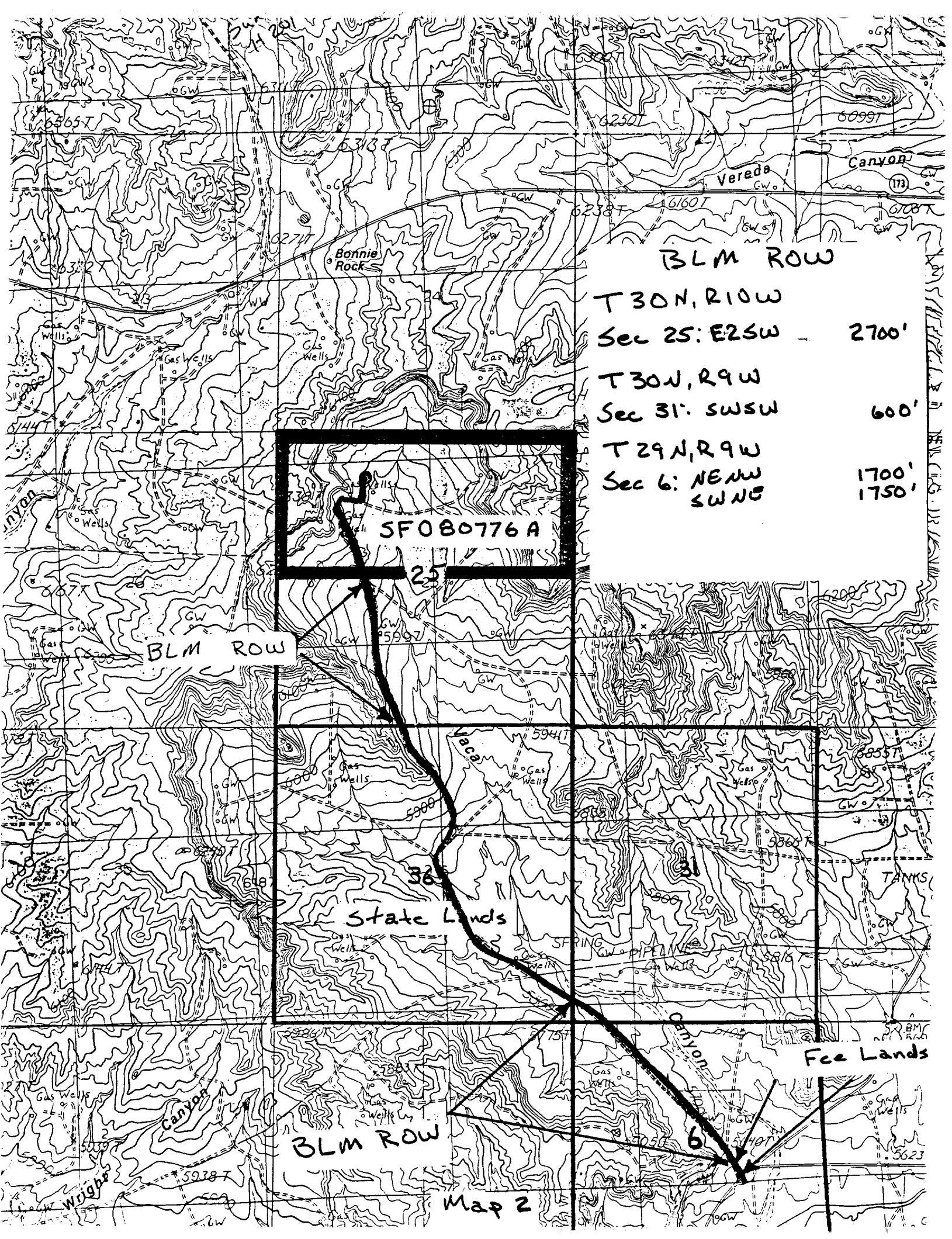
I hereby certify that the well location shown on this plat is plotted from field notes of actual surveys made by me or under my supervision, and that the same is true to the best of my knowledge and belief.

Date Surveyed
7-14-88

Registered Professional Engineer and/or Land Surveyor

Neale C Edwards

Certificate No. 6857



BLM ROW

T30N, R10W
Sec 25: E2SW 2700'
T30N, R9W
Sec 31: SWSW 600'
T29N, R9W
Sec 6: NE1/4 SW1/4 1700'
1750'

SF080776 A

BLM ROW

State Lands

Fee Lands

BLM ROW

Map 2