

UNITED STATES
DEPARTMENT OF THE INTERIOR
BUREAU OF LAND MANAGEMENT

APPLICATION FOR PERMIT TO DRILL OR DEEPEN

1. TYPE OF WORK

DRILL ☒DEEPEN ☐

2. TYPE OF WELL

OIL
WELL ☐GAS
WELL ☒

OTHER

SINGLE
ZONE ☐MULTIPLE
ZONE ☐

3. NAME OF OPERATOR

Dugan Production Corp. 6515

4. ADDRESS AND TELEPHONE NO.

P.O. Box 420, Farmington, NM 87499 505-325-1821

5. LOCATION OF WELL (Report location clearly and in accordance with any State requirements.)*

At surface
1640' FNL & 1110' FWL (SW/4 NW/4)
At proposed prod. zone

6. DISTANCE IN MILES AND DIRECTION FROM NEAREST TOWN OR POST OFFICE*

approx. 6 miles north of Kirtland, NM

7. DISTANCE FROM PROPOSED
LOCATION TO NEAREST
PROPERTY OR LEASE LINE, FT.
(Also to nearest drig. unit line, if any)

320'

8. NO. OF ACRES IN LEASE

1397.16

9. NO. OF ACRES ASSIGNED
TO THIS WELL

320

10. DISTANCE FROM PROPOSED LOCATION*
TO NEAREST WELL, DRILLING, COMPLETED,
OR APPLIED FOR, ON THIS LEASE, FT.75' from
proposed DPC's
Atlantis #3

11. PROPOSED DEPTH

6060'

12. ROTARY OR CABLE TOOLS

Rotary

13. ELEVATIONS (Show whether DF, RT, GL, KB, etc.)

5740' GL; 5752' KB

14. APPROX. DATE WORK WILL START*

ASAP

15. PROPOSED CASING AND CEMENTING PROGRAM

SIZE OF HOLE	GRADE, SIZE OF CASING	WEIGHT PER FOOT	SETTING DEPTH	QUANTITY OF CEMENT
12-1/4"	8-5/8"	24#	200'	160 cu.ft. circ. to surface
7-7/8"	4-1/2"	10.5#	6060'	1573 cu.ft. circ. to surface

Plan to drill a 12 1/4" hole and set 200' of 8-5/8" OD, 24#, J-55 surface casing; then plan to drill a 7-7/8" hole to total depth with gel-water-mud program to test Dakota formation. Plan to run IES and CDL logs. If determined productive, will run 4 1/2", 10.5#, J-55 casing, selectively perforate, frac, clean out after frac and complete well.

Note: **Original APD rescinded.** Resubmitted for reapproval with an updated plat and additional BOP information included.

RECEIVED
APR 25 1994OIL CON. DIV.
DIST. 8

IN ABOVE SPACE DESCRIBE PROPOSED PROGRAM: If proposal is to deepen, give data on present productive zone and proposed new productive zone. If proposal is to drill or deepen directionally, give pertinent data on subsurface locations and measured and true vertical depths. Give blowout prevention program, if any.

24.

SIGNED

Sherman E. Dugan
(This space for Federal or State office use)

TITLE Vice-President

DATE 3/9/94

PERMIT NO.

APPROVAL DATE

Application approval does not warrant or certify that the applicant holds legal or equitable title to those rights in the subject lease which would enable the applicant to conduct operations thereon.
CONDITIONS OF APPROVAL, IF ANY:

APPROVED BY

NMOCD

TITLE

*See Instructions On Reverse Side

DISTRICT MANAGER

OIL CONSERVATION DIVISION

STATE OF NEW MEXICO
ENERGY AND MINERALS DEPARTMENT

P. O. BOX 2088
SANTA FE, NEW MEXICO 87501

RECEIVED
BLM
Form C-102
Revised 10-1-78

All distances must be from the outer boundaries of the Section.

Operator Dugan Production Corporation			Lease Atlantis		94 MAR 14 AM 7:39	Well No. 1
Unit Letter E	Section 3	Township 30 North	Range 14 West	County San Juan		
Actual Footage Location of Well: 1640 feet from the North line and 1110 feet from the West line						
Ground Level Elev. 5740	Producing Formation Dakota		Pool Basin Dakota		Dedicated Acreage: 320 Acres	

1. Outline the acreage dedicated to the subject well by colored pencil or hatchure marks on the plat below.
2. If more than one lease is dedicated to the well, outline each and identify the ownership thereof (both as to working interest and royalty).
3. If more than one lease of different ownership is dedicated to the well, have the interests of all owners been consolidated by communitization, unitization, force-pooling, etc?

☒ Yes ☐ No If answer is "yes," type of consolidation To be Communitized

If answer is "no," list the owners and tract descriptions which have actually been consolidated. (Use reverse side of this form if necessary.) _____

No allowable will be assigned to the well until all interests have been consolidated (by communitization, unitization, forced-pooling, or otherwise) or until a non-standard unit, eliminating such interests, has been approved by the Division.

<p>Dugan Prod. NM 57170</p> <p>1640'</p> <p>1110' </p> <p>NM 10561 Dugan Prod.</p>	<p>SECTION 3</p>
--	------------------

CERTIFICATION

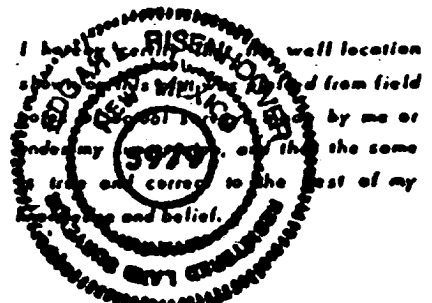
I hereby certify that the information contained herein is true and complete to the best of my knowledge and belief.

Jim L. Jacobs
Name
Jim L. Jacobs

Position
Geologist

Company
Dugan Production Corp.

Date
3/9/94

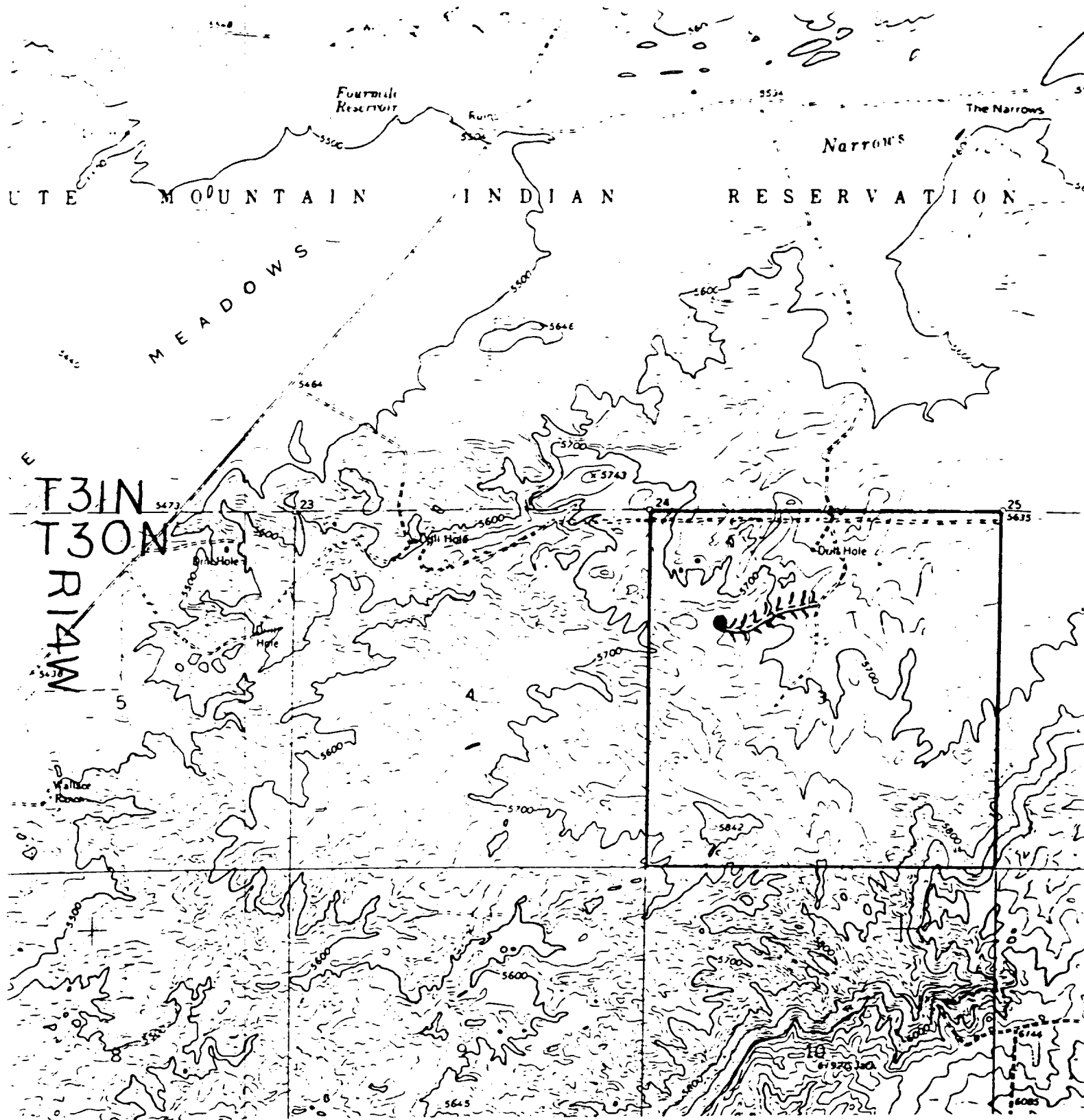


Date Surveyed
June 28, 1988

Registered Professional Engineer
and/or Land Surveyor

Edmund R. Runkhouse

RECEIVED
APR 2 1984
OIL CON. DIV.
DIST. 2



DUGAN PRODUCTION CORP. - Atlantis #1
Existing Roads Exhibit E

DUGAN PRODUCTION CORP. - Atlantis #1
Planned Access Road(s) Exhibit E

Vicinity of nearest town or reference pt.
approx. 6 miles North of Kirtland, NM

Width 20' Maximum grades 4%

Drainage design as required

Cuts & Fills see diagram

Surfacing material

Turnouts Waterbars

Culverts

Gates

Cattleguards

Fence cuts

Type of surface dirt

Conditions good

Other

Reference map: USGS map Young's Lake
N2655 W10915/7 E 1962 photorevised 1979