

UNITED STATES
DEPARTMENT OF THE INTERIOR
BUREAU OF LAND MANAGEMENT

APPLICATION FOR PERMIT TO DRILL, DEEPEN, OR PLUG BACK

1a. TYPE OF WORK

DRILL ☒

DEEPEN ☐

PLUG BACK ☐

b. TYPE OF WELL

OIL
WELL ☐

GAS
WELL ☐

OTHER ☐

2. NAME OF OPERATOR

Meridian Oil Inc.

3. ADDRESS OF OPERATOR

PO Box 4289, Farmington, NM 87499

4. LOCATION OF WELL (Report location clearly and in accordance with any State requirements.)

At surface
1740'S, 1035'E

At proposed prod. zone

14. DISTANCE IN MILES AND DIRECTION FROM NEAREST TOWN OR POST OFFICE*

13 miles from Aztec, NM

15. DISTANCE FROM PROPOSED*
LOCATION TO NEAREST
PROPERTY OR LEASE LINE, FT.
(Also to nearest drilg. unit line, if any.)

1035'

16. NO. OF ACRES IN LEASE

160

17. NO. OF ACRES ASSIGNED
TO THIS WELL

160.00

18. DISTANCE FROM PROPOSED LOCATION*
TO NEAREST WELL, DRILLING, COMPLETED,
OR APPLIED FOR, ON THIS LEASE, FT.

2000'

19. PROPOSED DEPTH

2870'

20. ROTARY OR CABLE TOOLS

Rotary

21. ELEVATIONS (Show whether DF, RT, GR, etc.)

6095' GL

DEVELOPMENT OF WELL IS REQUIRED ARE
SUBJECT TO COMPLETION WITH ATTACHED

22. APPROX. DATE WORK WILL START*

23. PROPOSED CASING AND CEMENTING PROGRAM

SIZE OF HOLE	SIZE OF CASING	WEIGHT PER FOOT	SETTING DEPTH	
12 1/4"	9 5/8"	32.3#	200'	130 cf. circulated
3 3/4"	7"	20.0#	2650'	318 cf. cover Ojo Alamo
6 1/4"	5 1/2" liner	23.0#	2870'	do not cement

The Fruitland coal formation will be completed.

A 3000 psi WP and 6000 psi test double gate preventer equipped with blind and pipe rams will be used for blow out prevention on this well.

This gas is dedicated.

The SE/4 of Section 4 is dedicated to this well.

OK CON. DIV.
201.3

IN ABOVE SPACE DESCRIBE PROPOSED PROGRAM: If proposal is to deepen or plug back, give data on present productive zone and proposed new productive zone. If proposal is to drill or deepen directionally, give pertinent data on subsurface locations and measured and true vertical depths. Give blowout preventer program, if any.

24. SIGNER [Signature] TITLE Regulatory Affairs DATE 09-13-88

(This space for Federal or State office use)

Approval of this action does

APPROVAL DATE

APPROVED THAT THE APPLICANT
Holds legal or valid title to the land

TITLE

DATE

CONDITIONS OF APPROVAL, IF ANY:

*See Instructions On Reverse Side

Title 18 U.S.C. Section 1001, makes it a crime for any person knowingly and willfully to make to any department or agency of the United States any false, fictitious or fraudulent statements or representations as to any matter within its jurisdiction.

OIL CONSERVATION DIVISION

STATE OF NEW MEXICO
ENERGY AND MINERALS DEPARTMENTP. O. BOX 2088
SANTA FE, NEW MEXICO 87501Form C-192
Revised 10-1-78

All distances must be from the outer boundaries of the Section.

Operator Meridian Oil Inc.			Lease Riddle E Com (SF-078319)		Well No. 250
Unit Letter I	Section 4	Township 30 North	Range 9 West	County San Juan	
Actual Footage Location of Wells 1740 feet from the South line and 1035 feet from the East line					
Ground Level Elev. 6095'	Producing Formation Fruitland Coal	Pool Undesignated		Dedicated Acreage: 160 Acres	

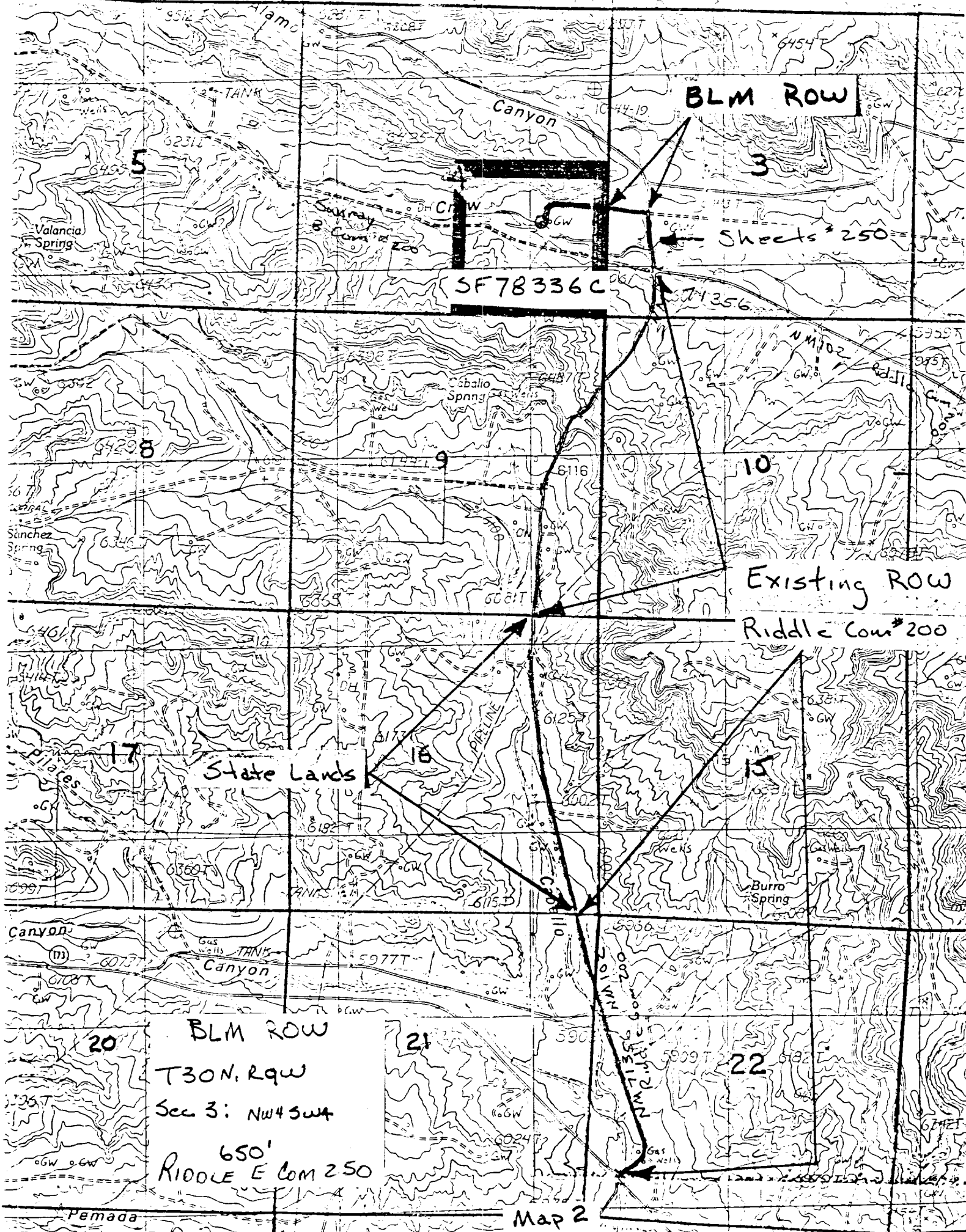
1. Outline the acreage dedicated to the subject well by colored pencil or hachure marks on the plat below.
2. If more than one lease is dedicated to the well, outline each and identify the ownership thereof (both as to working interest and royalty).
3. If more than one lease of different ownership is dedicated to the well, have the interests of all owners been consolidated by communitization, unitization, force-pooling, etc?

☒ Yes ☐ No If answer is "yes," type of consolidation communitization

If answer is "no," list the owners and tract descriptions which have actually been consolidated. (Use reverse side of this form if necessary.)

No allowable will be assigned to the well until all interests have been consolidated (by communitization, unitization, forced-pooling, or otherwise) or until a non-standard unit, eliminating such interests, has been approved by the Division

	CERTIFICATION I hereby certify that the information contained herein is true and complete to the best of my knowledge and belief. <i>[Signature]</i> Name Regulatory Affairs Position Meridian Oil Inc. Company Date 	
	I hereby certify that the well location shown on this plat was plotted from field notes of actual <u>6857</u> made by me or under my supervision, and that the same is true and correct to the best of my knowledge and belief. <i>[Signature]</i> Date Surveyed 8-20-80 Registered Professional Engineer and/or Land Surveyor Neale C. Edwards Certificate No. 6857	



BLM ROW

Sheets #250

SF78336C

Existing ROW

Riddle Com #200

State Lands

BLM ROW

T30N, R9W

Sec 3: NW 1/4 SW 1/4

650'
RIDDLE E Com 250