

UNITED STATES  
DEPARTMENT OF THE INTERIOR  
BUREAU OF LAND MANAGEMENT

APPLICATION FOR PERMIT TO DRILL, DEEPEN, OR PLUG BACK

1a. TYPE OF WORK

DRILL ☒

DEEPEN ☐

PLUG BACK ☐

b. TYPE OF WELL

OIL  
WELL ☐

GAS  
WELL ☒

OTHER ☐

2. NAME OF OPERATOR

Meridian Oil Inc.

3. ADDRESS OF OPERATOR

PO Box 4289, Farmington, NM 87499

4. LOCATION OF WELL (Report location clearly and in accordance with any State requirements.)

At surface  
1190'N, 920'E

At proposed prod. zone

14. DISTANCE IN MILES AND DIRECTION FROM NEAREST TOWN OR POST OFFICE\*

4 miles from Aztec, NM

15. DISTANCE FROM PROPOSED\*  
LOCATION TO NEAREST  
PROPERTY OR LEASE LINE, FT.  
(Also to nearest drig. unit line, if any)

920'

16. NO. OF ACRES IN LEASE

433.79

17. NO. OF ACRES ASSIGNED  
TO THIS WELL

319.76

18. DISTANCE FROM PROPOSED LOCATION\*  
TO NEAREST WELL DRILLING COMPLETED,  
OR APPLIED FOR, ON THIS LEASE, FT.

300'

19. PROPOSED DEPTH  
2245'

20. ROTARY OR CABLE TOOLS  
Rotary

21. ELEVATIONS (Show whether DP, RT, GR, etc.)

5922' GL

DRILLING OPERATIONS AUTHORIZED ARE  
SUBJECT TO COMPLIANCE WITH ATTACHED

22. APPROX. DATE WORK WILL START\*

23. PROPOSED CASING AND CEMENTING PROGRAM

This action is subject to technical and  
procedural review pursuant to 43 CFR 3165.3  
and appeal pursuant to 43 CFR 3165.4.

SIZE OF HOLE	SIZE OF CASING	WEIGHT PER FOOT	SETTING DEPTH
12 1/4"	9 5/8"	32.3#	200'
8 3/4"	7"	20.0#	2030'
6 1/4"	5 1/2" liner	15.5#	2245'

125 cf. circulated  
332 cf circ. surface  
do not cement

The Fruitland coal formation will be completed.

A 3000 psi WP and 6000 psi test double gate preventer equipped with  
blind and pipe rams will be used for blow out prevention on this well.

This gas is dedicated.

The E/2 of Section 34 is dedicated to this well.

RECEIVED  
JAN 23 1989  
OIL CON. DIV.  
DIST. 3

IN ABOVE SPACE DESCRIBE PROPOSED PROGRAM: If proposal is to deepen or plug back, give data on present productive zone and depth of productive zone. If proposal is to drill or deepen directionally, give pertinent data on subsurface locations and measured and true vertical depths. Give blowout preventer program, if any.

24. SIGNED [Signature] TITLE Regulatory Affairs DATE 12-06-88

(This space for Federal or State office use)

PERMIT NO. \_\_\_\_\_

APPROVAL DATE \_\_\_\_\_

APPROVED BY \_\_\_\_\_

TITLE \_\_\_\_\_

DATE \_\_\_\_\_

CONDITIONS OF APPROVAL, IF ANY:

\*See Instructions On Reverse Side

All distances must be from the outer boundaries of the Section.

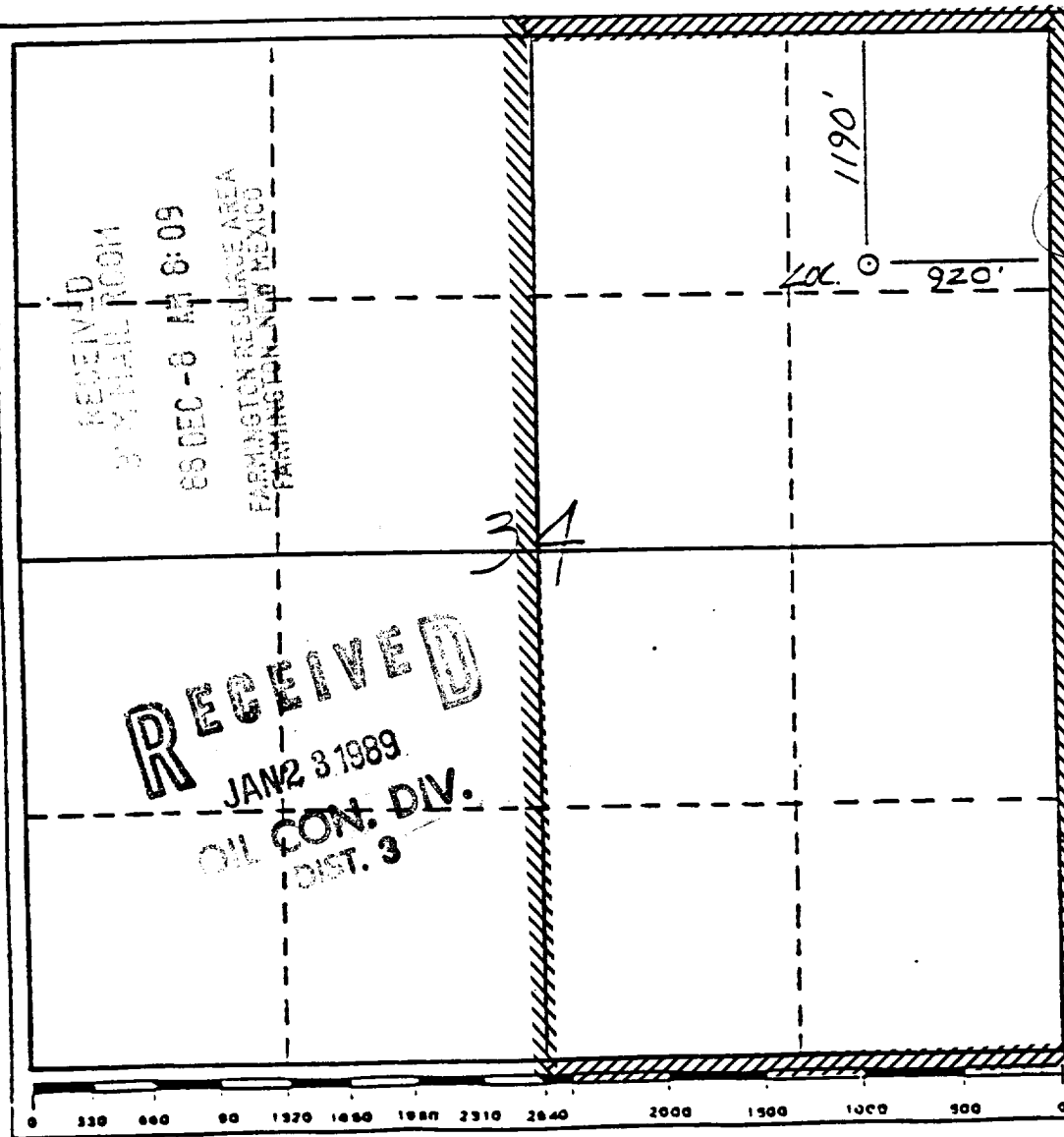
Operator Meridian Oil Inc.		Lease Murphy E COM (SF-043260B)		Well No. 507
Unit Letter A	Section 34	Township 30 North	Range 11 West	County San Juan
Actual Footage Location of Wells 1190 feet from the North line and 920 feet from the East line				
Ground Level Elev. 5922'	Producing Formation Fruitland Coal	Pool Undesignated	Dedicated Acreage: 319.76 Acres	

1. Outline the acreage dedicated to the subject well by colored pencil or hachure marks on the plat below.
2. If more than one lease is dedicated to the well, outline each and identify the ownership thereof (both as to working interest and royalty).
3. If more than one lease of different ownership is dedicated to the well, have the interests of all owners been consolidated by communitization, unitization, force-pooling, etc?

☒ Yes ☐ No If answer is "yes," type of consolidation communitization

If answer is "no," list the owners and tract descriptions which have actually been consolidated. (Use reverse side of this form if necessary.)

No allowable will be assigned to the well until all interests have been consolidated (by communitization, unitization, forced-pooling, or otherwise) or until a non-standard unit, eliminating such interests, has been approved by the Division



CERTIFICATION

I hereby certify that the information contained herein is true and complete to the best of my knowledge and belief.

*[Signature]*

Name  
Regulatory Affairs

Position  
Meridian Oil Inc.

Company

Date

I hereby certify that the location shown on this plat was plotted from field notes of actual surveys made by me or under my supervision, and that the same is true and correct to the best of my knowledge and belief.

*[Signature]*

Date Surveyed

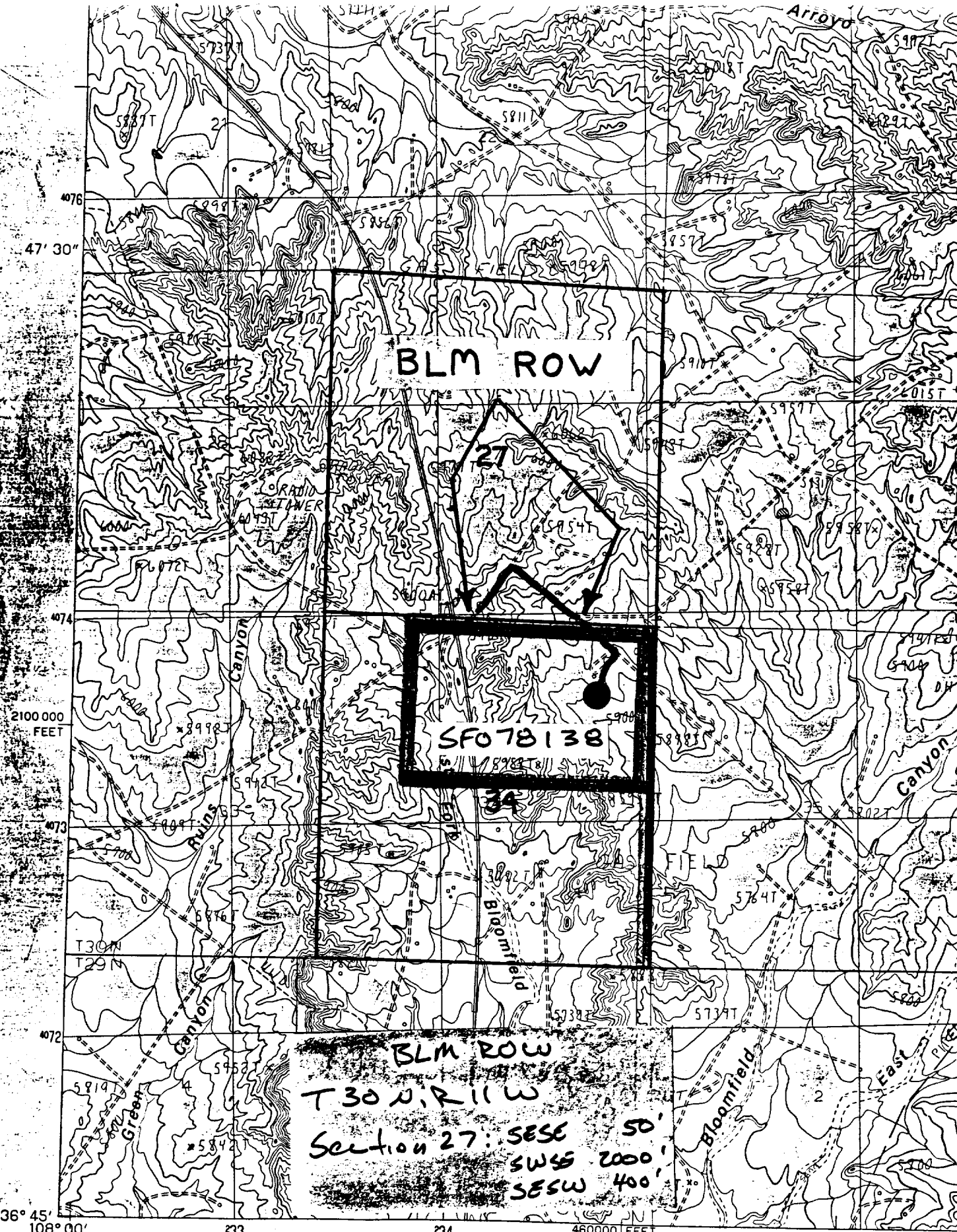
10-27-88

Registered Professional Engineer and/or Land Surveyor

Neale C. Edwards

Certificate No.

6857



PRODUCED BY THE UNITED STATES GEOLOGICAL SURVEY  
 CONTROL BY ..... USGS, NOS/NOAA  
 COMPILED FROM AERIAL PHOTOGRAPHS TAKEN ..... 1981  
 FIELD CHECKED ..... 1981 MAP EDITED ..... 1985  
 PROJECTION ..... TRANSVERSE MERCATOR  
 GRID: 1000-METER UNIVERSAL TRANSVERSE MERCATOR ..... ZONE 13  
 10,000-FOOT STATE GRID TICKS ..... NEW MEXICO, WEST ZONE  
 UTM GRID DECLINATION ..... 1'00" WEST  
 1985 MAGNETIC NORTH DECLINATION ..... 12" EAST  
 VERTICAL DATUM ..... NATIONAL GEODETIC VERTICAL DATUM OF 1929

MAP 2

MURPHY E Com 507

NORTH

