

STATE OF NEW MEXICO
ENERGY AND MINERALS DEPARTMENT

OIL CONSERVATION DIVISION
P. O. BOX 2088
SANTA FE, NEW MEXICO 87501

Form C-101
Revised 10-1-78

NO. OF COPIES RECEIVED	
DISTRIBUTION	
SANTA FE	
FILE	
U.S.G.S.	
LAND OFFICE	
OPERATOR	

1. Indicate Type of Lease
STATE ☒ FEDERAL ☐

2. State Oil & Gas Lease No.
E-178-1

APPLICATION FOR PERMIT TO DRILL, DEEPEN, OR PLUG BACK

1a. Type of Work DRILL <input checked="" type="checkbox"/> DEEPEN <input type="checkbox"/> PLUG BACK <input type="checkbox"/>		7. Unit Agreement Name Northeast Blanco
b. Type of Well OIL WELL <input type="checkbox"/> GAS WELL <input checked="" type="checkbox"/> OTHER <input type="checkbox"/>		8. Form or Lease Name Northeast Blanco Unit
2. Name of Operator Blackwood & Nichols Co., Ltd.		9. Well No. 448
3. Address of Operator P. O. Box 1237, Durango, CO 81302		10. Field and Pool, or Wildcat Basin Fruitland Coal
4. Location of Well UNIT LETTER <u>G</u> LOCATED <u>1515</u> FEET FROM THE <u>North</u> LINE AND <u>1340</u> FEET FROM THE <u>East</u> LINE OF SEC. <u>32</u> TWP. <u>31N</u> RSE. <u>7W</u> NMPM		12. County San Juan
19. Proposed Depth 3509'		19A. Formation Fruitland Coal
20. Rotary or C.L. Rotary		
21. Elevations (Show whether DF, KI, etc.) 6373' GL	21A. Kind & Status Plug. Bond Statewide	21B. Drilling Contractor Not selected
22. Approx. Date Work will start April 1, 1989		

23.

PROPOSED CASING AND CEMENT PROGRAM

SIZE OF HOLE	SIZE OF CASING	WEIGHT PER FOOT	SETTING DEPTH	SACKS OF CEMENT	EST. TOP
12 1/4"	9 5/8"	36#	300'	207 cu.ft.	circulate
8 3/4"	7"	23#	3509'	750 cu.ft.	circulate

Propose to spud in the San Jose formation. Will drill a 12 1/4" surface hole to a TD of 300'. Surface casing will be run and cemented with cement returns to surface. WOC 12 hours. Test to 600 psi. Drill a 8 3/4" hole to 3509' using fresh water mud. Weighted mud will be used to drill the Fruitland coals. Logs will be run at TD. Casing will be run and cemented in two stages with cement returns to surface. The drilling rig will be released and a completion unit moved on. Cased hole bond and correlation logs will be run. The Fruitland coal intervals will be perforated and frac'd using a fresh water base gel fluid.

APPROVAL EXPIRES 7-21-88
UNLESS DRILLING IS COMMENCED.
SPUD NOTICE MUST BE SUBMITTED
WITHIN 180 DAYS

RECEIVED

JAN 20 1989

OIL CON. DIV.

DIST. 3

Surface ownership is State.

IN ABOVE SPACE DESCRIBE PROPOSED PROGRAM: IF PROPOSAL IS TO DEEPEN OR PLUG BACK, GIVE DATA ON PRESENT PRODUCTION, ZONE AND PROPOSED NEW PRODUCTION ZONE. GIVE BLOWOUT PREVENTER PROGRAM, IF ANY.

I hereby certify that the information above is true and complete to the best of my knowledge and belief.

Signed William F. Clark Title Operations Manager Date 1/19/89
(This space for State Use)

APPROVED BY Ernie R. Bush TITLE DEPUTY OIL & GAS INSPECTOR, DIST. #3 DATE JAN 23 1989
CONDITIONS OF APPROVAL, IF ANY:

All distances must be from the outer boundaries of the Section.

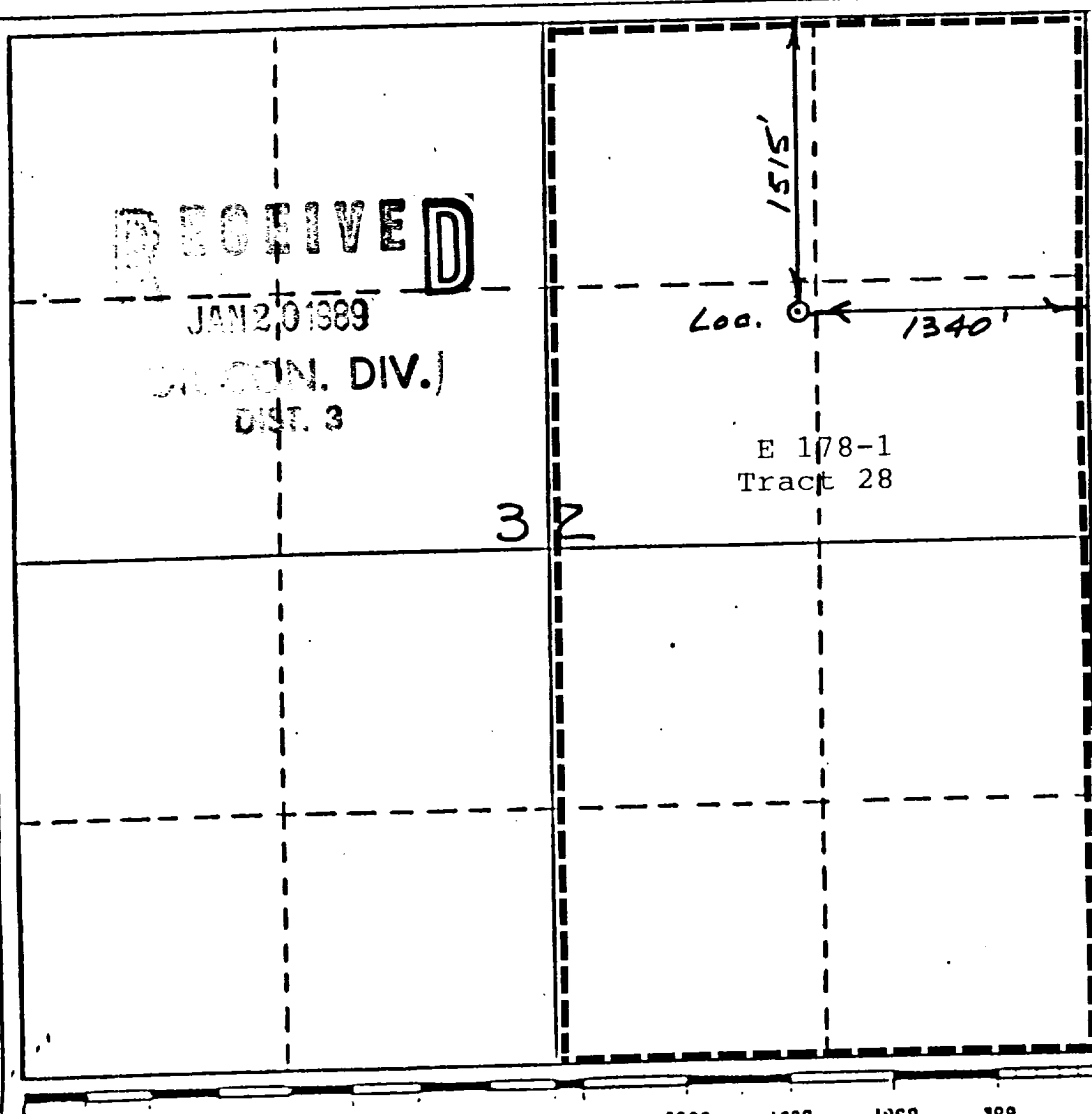
Operator Blackwood & Nichols Co., LTD.			Lease Northeast Blanco Unit		Well No. 448
Unit Letter G	Section 32	Township 31 North	Range 7 West	County San Juan	
Actual Footage Location of Wells 1515 feet from the North line and 1340 feet from the East line					
Ground Level Elev. 6373'	Producing Formation Fruitland Coal		Pool Basin Fruitland Coal		Dedicated Acreage: 320 Acres

1. Outline the acreage dedicated to the subject well by colored pencil or hatchure marks on the plat below.
2. If more than one lease is dedicated to the well, outline each and identify the ownership thereof (both as to working interest and royalty).
3. If more than one lease of different ownership is dedicated to the well, have the interests of all owners been consolidated by communitization, unitization, force-pooling, etc?

☐ Yes ☐ No If answer is "yes," type of consolidation NA

If answer is "no," list the owners and tract descriptions which have actually been consolidated. (Use reverse side of this form if necessary.)

No allowable will be assigned to the well until all interests have been consolidated (by communitization, unitization, forced-pooling, or otherwise) or until a non-standard unit, eliminating such interests, has been approved by the Division.



CERTIFICATION

I hereby certify that the information contained herein is true and complete to the best of my knowledge and belief.

William F. Clark
Name

Position
Operations Manager

Company
Blackwood & Nichols Co.

Date
1/19/89

I hereby certify that the location shown on this plat was obtained from the notes of actual surveys made by me or under my supervision, and that the same is true and correct to the best of my knowledge and belief.

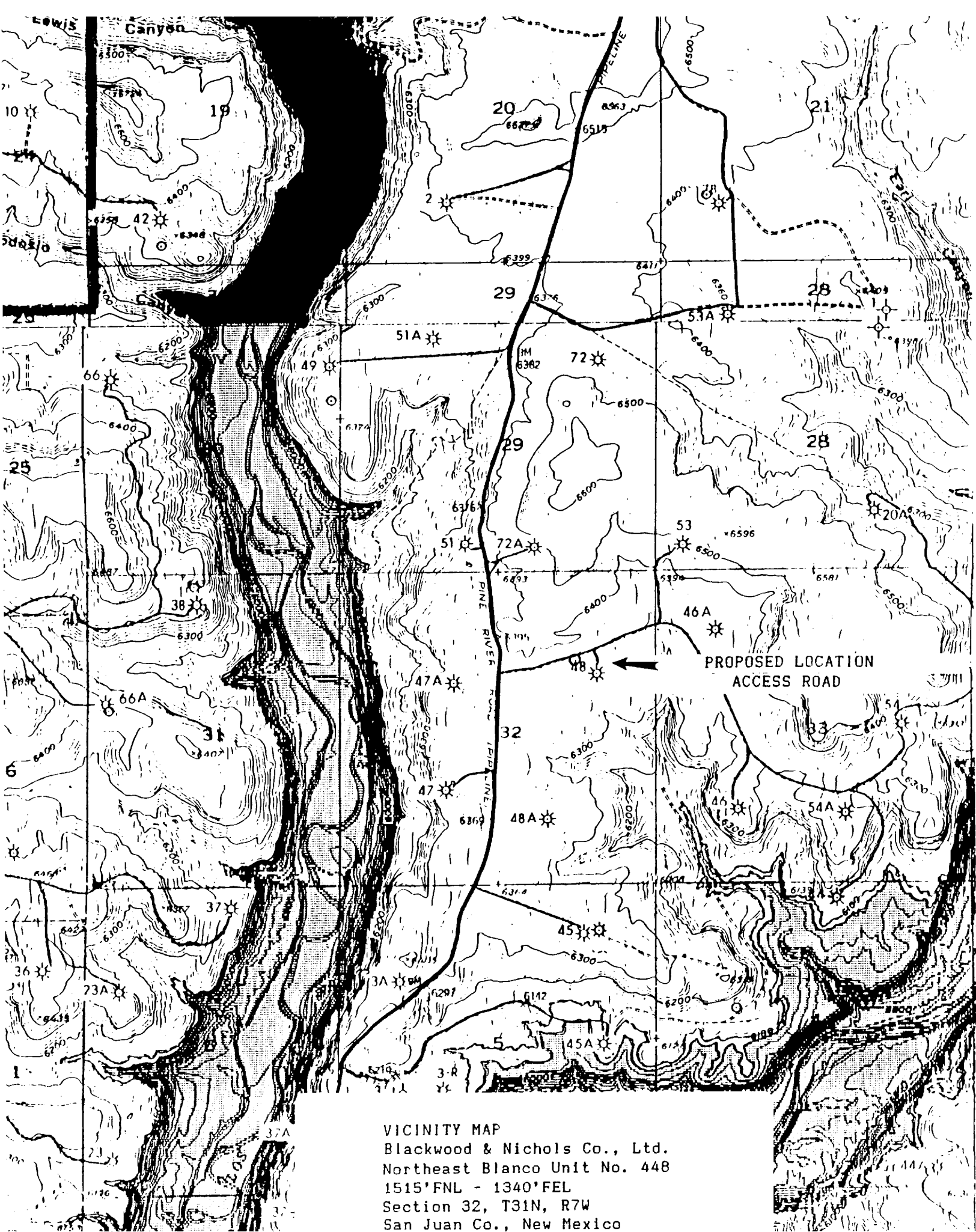
Neale C. Edwards
Date Surveyed

11-30-88

Registered Professional Engineer
and/or Land Surveyor

Neale C. Edwards

Certificate No. 6857



VICINITY MAP
 Blackwood & Nichols Co., Ltd.
 Northeast Blanco Unit No. 448
 1515'FNL - 1340'FEL
 Section 32, T31N, R7W
 San Juan Co., New Mexico