

UNITED STATES
DEPARTMENT OF THE INTERIOR
GEOLOGICAL SURVEY

APPLICATION FOR PERMIT TO DRILL, DEEPEN, OR PLUG BACK

1a. TYPE OF WORK

DRILL ☒OR DEEPEN ☒ 11:24PLUG BACK ☐

b. TYPE OF WELL

OIL
WELL ☐GAS
WELL ☒

OTHER

FARMINGTON RESOURCES
FARMINGTON, NEW MEXICOSINGLE
ZONE ☒MULTIPLE
ZONE ☐

2. NAME OF OPERATOR

Blackwood & Nichols Co., Ltd.

3. ADDRESS OF OPERATOR

P.O.Box 1237, Durango, Colorado, 81302-1237

4. LOCATION OF WELL (Report location clearly and in accordance with any State requirements.)

At surface

260'FNL - 2465'FEL

At proposed prod. zone

same

14. DISTANCE IN MILES AND DIRECTION FROM NEAREST TOWN OR POST OFFICE*

15 miles NE of Blanco New Mexico

16. DISTANCE FROM PROPOSED*

LOCATION TO NEAREST
PROPERTY OR LEASE LINE, FT.
(Also to nearest drlg. unit line, if any)

175'

18. DISTANCE FROM PROPOSED LOCATION*
TO NEAREST WELL, DRILLING, COMPLETED,
OR APPLIED FOR, ON THIS LEASE, FT.

250'

16. NO. OF ACRES IN LEASE

2314.56

19. PROPOSED DEPTH

3300'

17. NO. OF ACRES ASSIGNED
TO THIS WELL

E 320

20. ROTARY OR CABLE TOOLS

Rotary

22. APPROX. DATE WORK WILL START*

April 1, 1989

DRILL ELEVATIONS (Show whether DF, RT, GR, etc.)

SUBJECT TO THE ATTACHED

6415'GL

"GENERAL REQUIREMENTS"

PROPOSED CASING AND CEMENTING PROGRAM

SIZE OF HOLE	SIZE OF CASING	WEIGHT PER FOOT	SETTING DEPTH	QUANTITY OF CEMENT
12 1/4"	9 5/8"	36#	300'	207 cuft to circulate
8 3/4"	7"	23#	3140'	781 cuft to circulate
6 1/4"	5 1/2"	17#	3300	39 cuft to circulate

Propose to spud in the San Jose formation. Will drill a 12 1/4" surface hole to a TD of 300'. Surface casing will be run and cemented with cement returns to surface. WOC 12 hrs. Test to 600psi. Drill an 8 3/4" hole to a TD of 3140' using fresh water mud. No abnormal pressures or poisonous gases are anticipated. Casing will be run and cemented with cement returns to surface. WOC 12 hours. Test to 1500 psi. Drill a 6 1/4" hole to a TD of 3300' using water and air. Run a production liner. Liner may or may not be cemented, depending on hole conditions and wells natural producing ability.

RECEIVED

MAR 21 1989

OIL CON. DIV.

DIST. 9

Surface ownership is Bureau of Reclamation

IN ABOVE SPACE DESCRIBE PROPOSED PROGRAM: If proposal is to deepen or plug back, give data on present productive zone and proposed new productive zone. If proposal is to drill or deepen directionally, give pertinent data on subsurface locations and measured and true vertical depths. Give blowout preventer program, if any.

24.

SIGNED

William F. Blair

TITLE

Operations Manager

DATE

Jan 23, 89

(This space for Federal or State office use)

PERMIT NO.

APPROVAL DATE

APPROVED BY

TITLE

CONDITIONS OF APPROVAL, IF ANY:

APPROVED
AS AMENDED

MAR 27 1989

AREA MANAGER

*See Instructions On Reverse Side

OIL CONSERVATION DIVISION

STATE OF NEW MEXICO
ENERGY AND MINERALS DEPARTMENTP. O. BOX 2088
SANTA FE, NEW MEXICO 87501Form C-102
Revised 10-1-78

All distances must be from the outer boundaries of the Section.

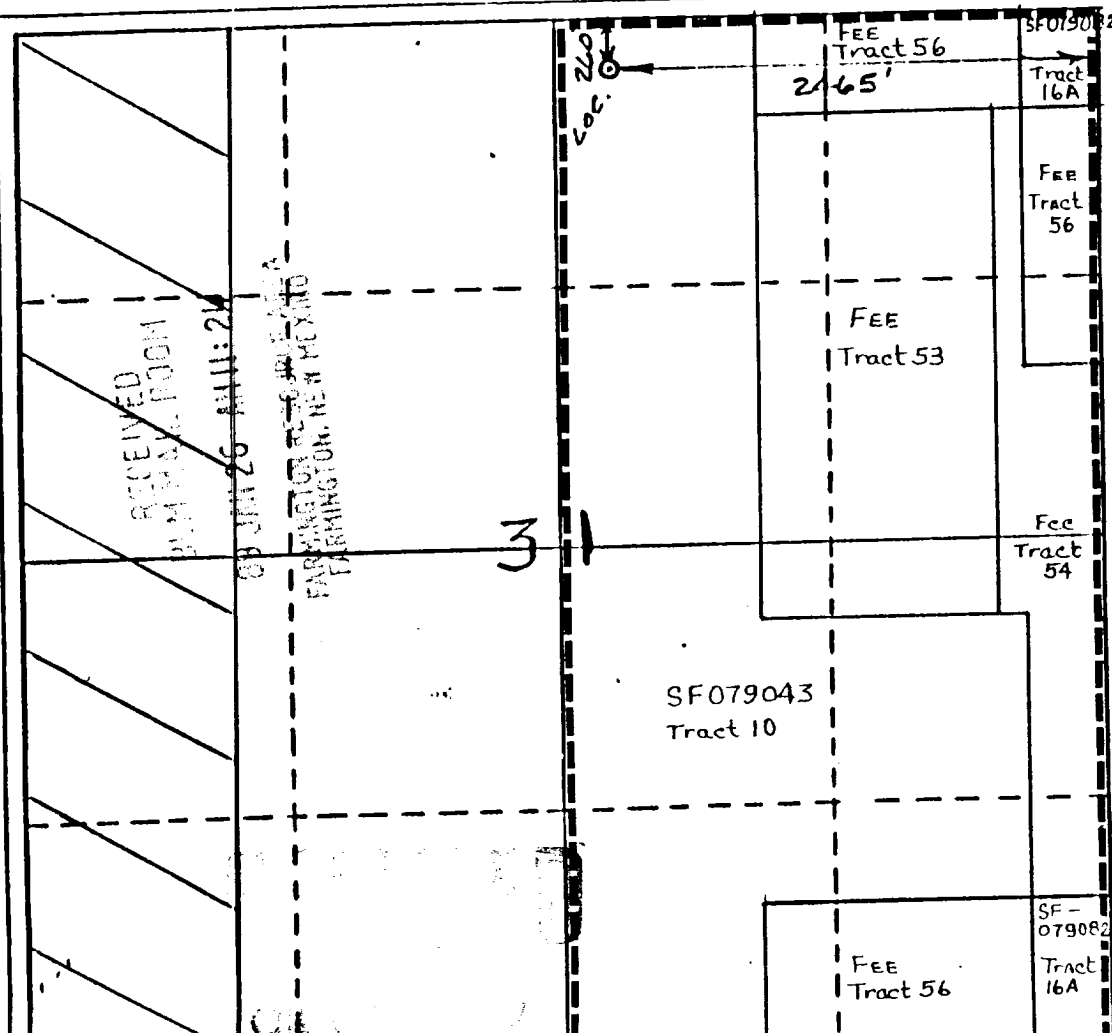
Operator Blackwood & Nichols Co., LTD.			Lease Northeast Blanco Unit		Well No. 455
Unit Letter B	Section 31	Township 31 North	Range 7 West	County San Juan	
Actual Footage Location of Wells 260' feet from the North line and 2465' feet from the East line					
Ground Level Elev. 6415	Producing Formation Fruitland Coal	Pool Basin Fruitland Coal		Dedicated Acreage: 320 Acres	

1. Outline the acreage dedicated to the subject well by colored pencil or hachure marks on the plat below.
2. If more than one lease is dedicated to the well, outline each and identify the ownership thereof (both as to working interest and royalty).
3. If more than one lease of different ownership is dedicated to the well, have the interests of all owners been consolidated by communitization, unitization, force-pooling, etc?

☒ Yes ☐ No If answer is "yes," type of consolidation Unitization

If answer is "no," list the owners and tract descriptions which have actually been consolidated. (Use reverse side of this form if necessary.)

No allowable will be assigned to the well until all interests have been consolidated (by communitization, unitization, forced-pooling, or otherwise) or until a non-standard unit, eliminating such interests, has been approved by the Division



CERTIFICATION

I hereby certify that the information contained herein is true and complete to the best of my knowledge and belief.

William F. Clark
Name

Position
Operations Manager

Company
Blackwood & Nichols Co

Date
Jan 23, 1989

I hereby certify that the location shown on this plat was plotted from field notes of actual survey made by me or under my supervision, and that the same is true and correct to the best of my knowledge and belief.

W. C. Edwards
Date Surveyed
11-22-88

Registered Professional Engineer
and/or Land Surveyor

W. C. Edwards

