

UNITED STATES
DEPARTMENT OF THE INTERIOR
BUREAU OF LAND MANAGEMENT

RECEIVED
BLM MAIL ROOM

APPLICATION FOR PERMIT TO DRILL, DEEPEN, OR PLUG BACK

30-MAR-20 AM 10:30

1a. TYPE OF WORK
DRILL

1b. TYPE OF WELL
GAS SINGLE ZONE

2. OPERATOR
MERIDIAN OIL INC.

3. ADDRESS & PHONE NO. OF OPERATOR
P O BOX 4289
FARMINGTON, NM 87499

4. LOCATION OF WELL
1150'N 1155'E

5. LEASE NUMBER
SF-078138

6. IF INDIAN, ALL. OR TRIBE NAME

7. UNIT AGREEMENT NAME

8. FARM OR LEASE NAME
MORRIS A COM

9. WELL NO.
504

10. FIELD, POOL, OR WILDCAT
BASIN FRUITLAND COAL

11. SEC. T. R. M OR BLK.
A SEC. 15 T30N R11W NMPM

14. DISTANCE IN MILES FROM NEAREST TOWN
2 MILES FROM AZTEC

12. COUNTY 13. STATE
SAN JUAN NM

15. DISTANCE FROM
PROPOSED LOCATION 1150'
TO NEAREST PROPERTY
OR LEASE LINE.

16. ACRES IN LEASE 17. ACRES ASSIGNED TO WELL
2069.26 E/ 320-00 317.66

This action is subject to technical and
procedural review pursuant to 43 CFR 3160.4
and appeal pursuant to 43 CFR 3165.4

18. DISTANCE FROM
PROPOSED LOCATION
TO NEAREST WELL DR. 250'
COMPL., OR APPLIED
FOR ON THIS LEASE.

19. PROPOSED DEPTH 20. ROTARY OR CABLE TOOLS
2280' ROTARY

DRILLING OPERATIONS AUTHORIZED ARE
SUBJECT TO COMPLIANCE WITH ATTACHED
"GENERAL REQUIREMENTS"

21. ELEVATIONS (DF, FT, GR, ETC.)
5853'GL

22. APPROX. DATE WORK WILL START

23. PROPOSED CASING AND CEMENTING PROGRAM

*SEE OPERATIONS PLAN

24. AUTHORIZED BY: [Signature]
REGULATORY AFFAIRS

Held 6-104 for COA
[Signature]

RECEIVED

APR 3 4 10 39

OIL CON. DIV

3-16-89

DATE
APPROVED
AS AMENDED

MAR 31 1989

AREA MANAGER

NOTE: THIS FORMAT IS ISSUED IN LIEU OF US BLM FORM 3160-3.

not warrant that the applicant
holds legal or equitable rights
or title to this lease."

30-03

All distances must be from the outer boundaries of the Section.

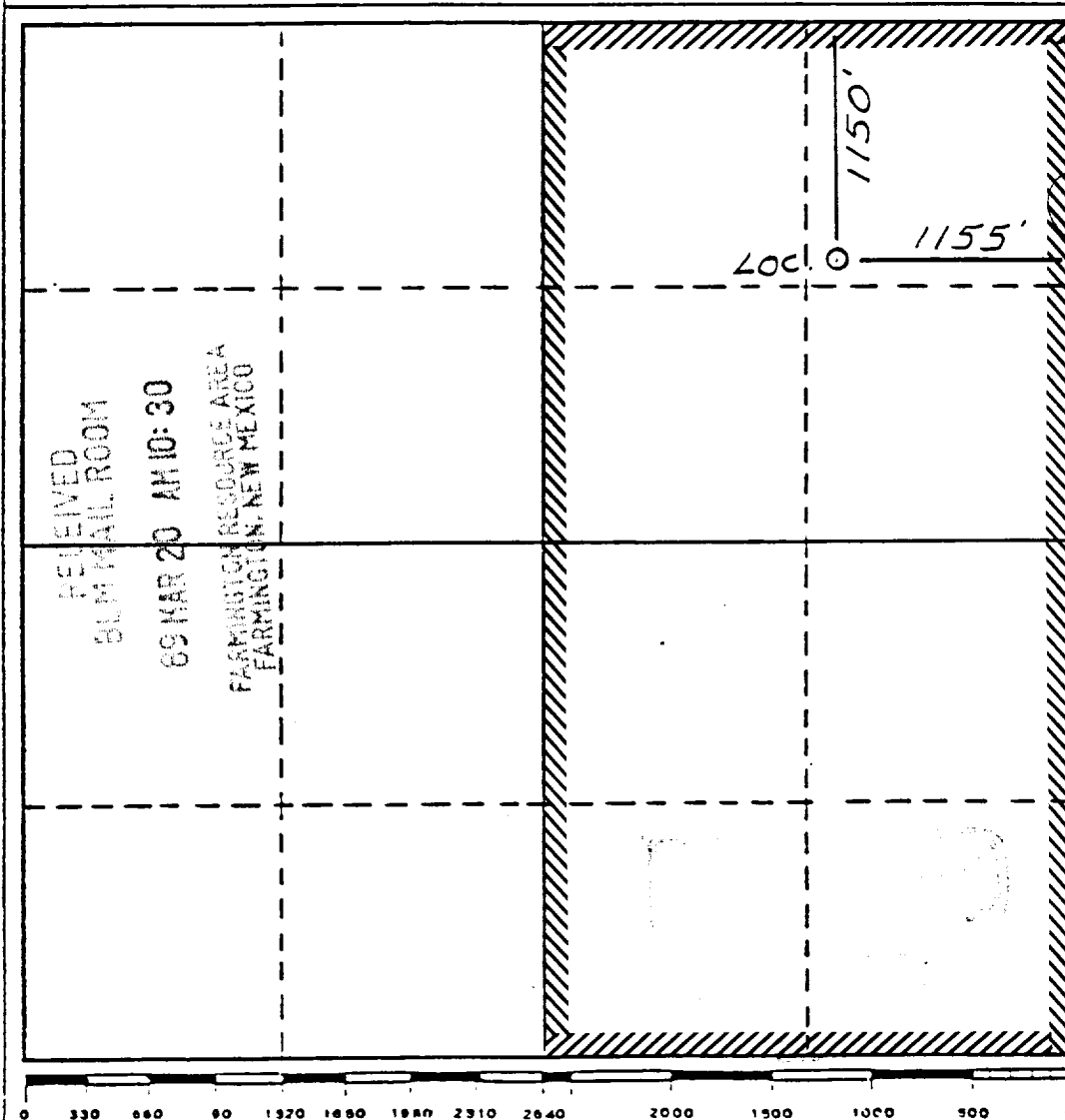
| | | | | | |
|---------------------------------------------------------------------------------------------------------------------------------|----------------------------------------------|-----------------------------|------------------------------------------|--------------------------------------------|------------------------|
| Operator Meridian Oil Inc. | | | Lease Morris A Com (SF-078138) | | Well No. 504 |
| Unit Letter A | Section 15 | Township 30 North | Range 11 West | County San Juan | |
| Actual Footage Location of Wells: 1150 feet from the North line and 1155 feet from the East line | | | | | |
| Ground Level Elev. 5853 | Producing Formation Fruitland Coal | | Pool Basin | Dedicated Acreage: 320.00 317.66 | |

1. Outline the acreage dedicated to the subject well by colored pencil or hatchure marks on the plat below.
2. If more than one lease is dedicated to the well, outline each and identify the ownership thereof (both as to work interest and royalty).
3. If more than one lease of different ownership is dedicated to the well, have the interests of all owners been consolidated by communitization, unitization, force-pooling, etc?

☐ Yes ☒ No If answer is "yes," type of consolidation Communitization agreement
being prepared

If answer is "no," list the owners and tract descriptions which have actually been consolidated. (Use reverse side this form if necessary.)

No allowable will be assigned to the well until all interests have been consolidated (by communitization, unitization, forced-pooling, or otherwise) or until a non-standard unit, eliminating such interests, has been approved by the Division.



CERTIFICATION

I hereby certify that the information contained herein is true and complete to best of my knowledge and belief.

Name Regulatory Affairs

Position Meridian Oil Inc.

Company 3-16-89

Date

I hereby certify that the location shown on this plat was plotted from the notes of actual surveys made by me under supervision, and that the same is true and correct to the best of my knowledge and belief.

Date Surveyed 12-1-88

Registered Professional Engineer and/or Land Surveyor

Neale C. Edwards

Certificate No.

6857

OPERATIONS PLAN

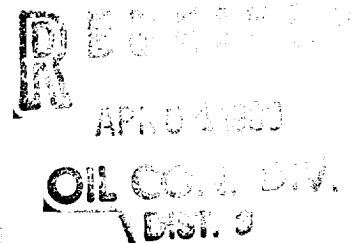
DATE: MAR 14, 1989

Well Name: 504 MORRIS A COM
 Sec. 15 T30N R11W
 BASIN FRUITLAND COAL

1150'N 1155'E
 SAN JUAN NEW MEXICO
 Elevation 5853'GL

Formation tops: Surface- NACIMIENTO

Ojo Alamo- 870
 Kirtland- 1015
 Fruitland- 1875
 Fruitland Coal Top- 2093
 Fruitland Coal Base- 2273
 Intermediate TD- 2073
 Total Depth- 2280
 Pictured Cliffs- 2291



Logging Program: Mud logs from intermediate to total depth.

Mud Program: Low solid non-dispersed mud from surface to total depth.

| Casing Program: | Hole Size | Depth Interval | Csg. Size | Weight | Grade |
|-----------------|-----------|----------------|-----------|--------|-------|
| | 12 1/4" | 0 - 200 | 9 5/8" | 32.3# | H-40 |
| | 8 3/4" | 0 - 2073 | 7" | 20.0# | K-55 |
| | 6 1/4" | 2023 - 2280 | 5 1/2" | 15.5# | K-55 |
| Tubing Program: | | 0 - 2280 | 2 7/8" | 6.5# | J-55 |

Float Equipment: 9 5/8" surface casing - saw tooth guide shoe.

7" intermediate casing - guide shoe and self-fill insert float valve. Three centralizers run every other joint above shoe. Run insert float one joint above the guide shoe.

5 1/2" production liner - float shoe on bottom and a pre-drilled liner run to the 7" casing with a minimum 50' overlap. Liner hanger is a double slip grip type.

Wellhead Equipment: 9 5/8" x 7" x 2 7/8" x 11" 3000 psi xmas tree assembly.

Cementing:

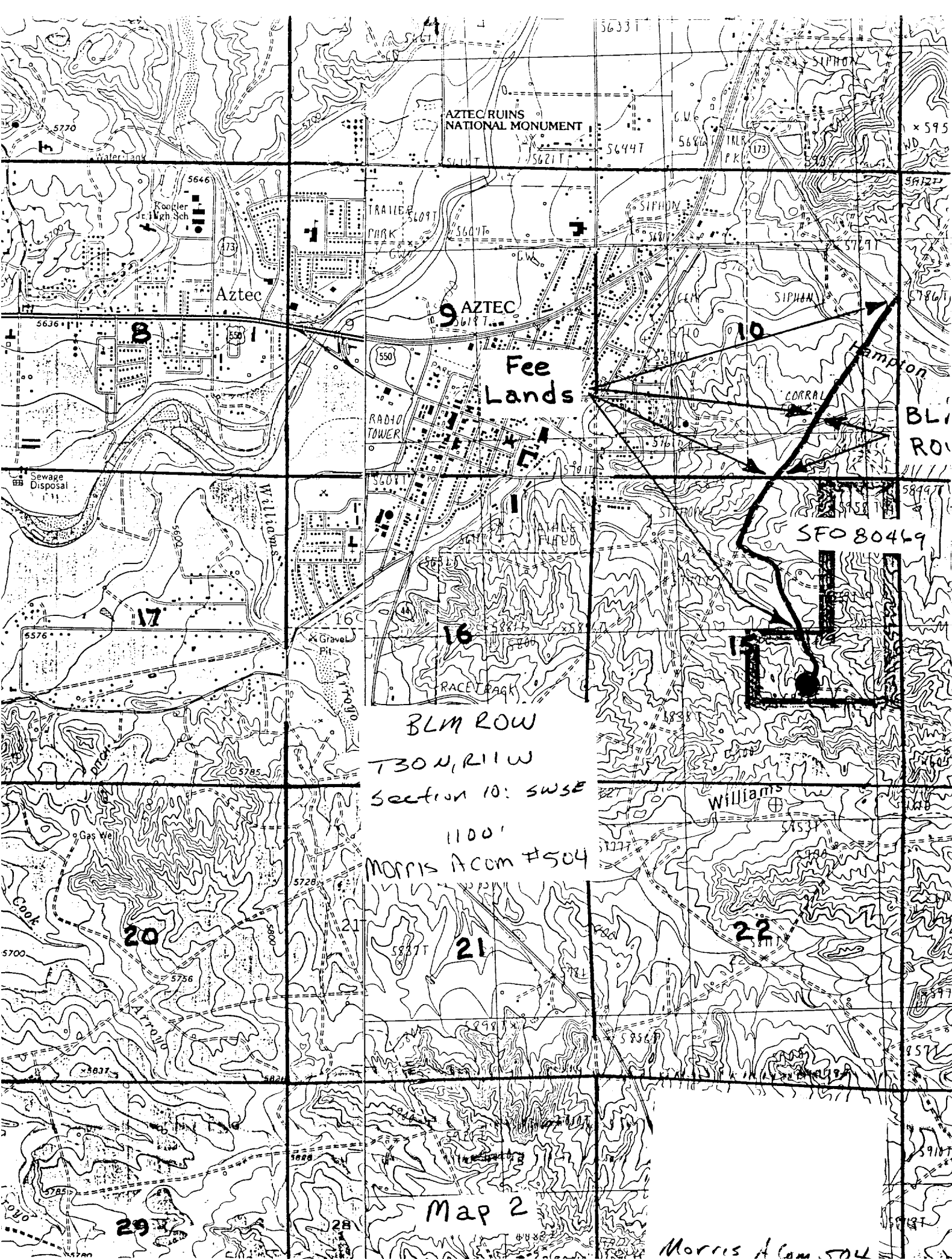
9 5/8" surface casing - cement with 106 sacks of class "B" cement with 1/4# flocele/sack and 3% calcium chloride (125 cu ft. of slurry, 100% excess to circulate to surface). WOC 12 hours. Test casing to 600 psi for 30 minutes.

7" intermediate casing - lead with 126 sacks of 65/35 class "B" poz with 6% gel, 2% calcium chloride and 1/2 cu.ft. Perlite/sack (10.3 gallons of water/sack) tail with 100 sacks of class "B" with 2% calcium chloride. 362 cu ft. of slurry, 100% excess to cover the Ojo Alamo. Run temperature survey at 8 hours. WOC 12 hours. Test casing to 1500 psi for 30 minutes.

5 1/2" liner - do not cement.

The Fruitland coal formation will be completed.

A 3000 psi WP and 6000 psi test double gate preventer equipped with blind and pipe rams will be used for blow out prevention on this well. This gas is dedicated.
 The E/2 of Section 15 is dedicated to this well.



AZTEC RUINS
NATIONAL MONUMENT

Rooster
High Sch

Aztec

9 AZTEC

Fee
Lands

RADIO
TOWER

SIPHON

SIPHON

CORRAL

Hampton

BLM

ROW

SFO 80469

BLM ROW

T30 N, R11 W

Section 10: SWSE

1100'

Morris Acom #504

Williams

20

21

22

29

Map 2

Morris Acom SW