

UNITED STATES
DEPARTMENT OF THE INTERIOR
GEOLOGICAL SURVEY(Other instructions on
reverse side)

30-045-27265

APPLICATION FOR PERMIT TO DRILL, DEEPEN, OR PLUG BACK

1a. TYPE OF WORK

DRILL ☒DEEPEN ☐PLUG BACK ☐

b. TYPE OF WELL

OIL
WELL ☐GAS
WELL ☒OTHER ☐FARMINGTON RESOURCE AREA
SINGLE ZONE ☒ MULTIPLE
ZONE ☐

2. NAME OF OPERATOR

Blackwood & Nichols Co., Ltd.

3. ADDRESS OF OPERATOR

P.O.Box 1237, Durango, Colorado, 81302-1237

4. LOCATION OF WELL (Report location clearly and in accordance with any State requirements.)*

At surface

320'FSL - 1250'FWL

At proposed prod. zone

same

14. DISTANCE IN MILES AND DIRECTION FROM NEAREST TOWN OR POST OFFICE*

16 miles NE of Blanco, New Mexico

15. DISTANCE FROM PROPOSED*

LOCATION TO NEAREST
PROPERTY OR LEASE LINE, FT.
(Also to nearest drlg. unit line, if any)

320'

16. NO. OF ACRES IN LEASE

320

17. NO. OF ACRES ASSIGNED
TO THIS WELL

259.82

18. DISTANCE FROM PROPOSED LOCATION*
TO NEAREST WELL, DRILLING, COMPLETED,
OR APPLIED FOR, ON THIS LEASE, FT.

400'

19. PROPOSED DEPTH

3490'

20. ROTARY OR CABLE TOOLS

Rotary

21. ELEVATIONS (Show whether DF, RT, GR, etc.)

6314'GL

22. APPROX. DATE WORK WILL START*

April 1, 1989

DRILLING
SUBJECT

PROPOSED CASING AND CEMENTING PROGRAM

SIZE OF HOLE, IN.	SIZE OF CASING	WEIGHT PER FOOT	SETTING DEPTH	QUANTITY OF CEMENT
12 1/4"	9 5/8"	36#	300'	207 cuft to circulate
7 7/8"	5 1/2"	17#	3490'	1074 cuft to circulate

Propose to spud in the San Jose formation. Will drill a 12 1/4" surface hole to a TD of 300'. Surface casing will be run and cemented with cement returns to surface. WOC 12 hrs. Test to 600 psi. Drill a 7 7/8" hole to a TD of 3490' using a fresh water mud. No poisonous gases are anticipated. Weighted mud will be used to drill the Fruitland coals. Logs will be run at TD. Casing will be run and cemented in two stages with cement returns to surface. The drilling rig will be released and a completion unit moved on. Cased hole bond and correlation logs will be run. The Fruitland coals will be perforated and frac'd with a fresh water based gel fluid.

This APD requests a pipeline ROW as shown on the Vicinity Map.

Surface ownership is State

IN ABOVE SPACE DESCRIBE PROPOSED PROGRAM: If proposal is to deepen or plug back, give data on present productive zone and proposed new productive zone. If proposal is to drill or deepen directionally, give pertinent data on subsurface locations and measured and true vertical depths. Give blowout preventer program, if any.

24.

SIGNED

William T. Clark

TITLE Operations Manager

DATE

Jan 18, 1989

(This space for Federal or State office use)

PERMIT NO.

APPROVAL DATE

APPROVED BY

TITLE

DATE

CONDITIONS OF APPROVAL, IF ANY:

NMOCC

APPROVED

AS AMENDED

MAR 27 1989

AREA MANAGER

R-8888 (NSLHASP)

*See Instructions On Reverse Side

OIL CONSERVATION DIVISION

P. O. BOX 2014

STATE OF NEW MEXICO
ENERGY AND MINERALS DEPARTMENT

SANTA FE, NEW MEXICO 87501

Form C-102
Revised 10-1-78

All distances must be from the outer boundaries of the Section.

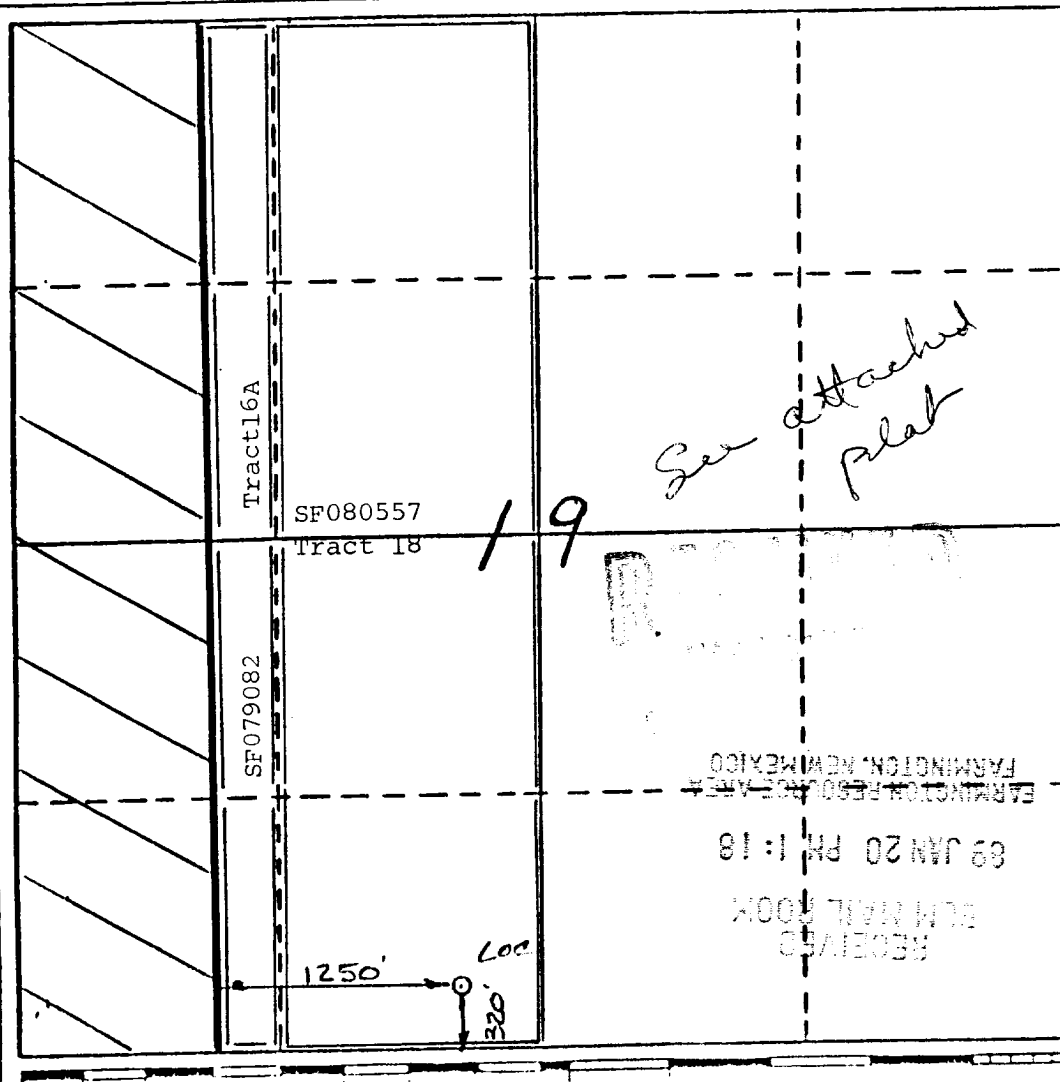
Operator Blackwood & Nichols Co., LTD.			Lease Northeast Blanco Unit		Well No. 449
Unit Letter N	Section 19	Township 31 North	Range 7 West	County San Juan	
Actual Footage Location of Wells 320' feet from the South line and 1250' feet from the East line					
Ground Level Elev. 6314'	Producing Formation Fruitland Coal	Pool Basin Fruitland Coal		Dedicated Acreage: 259.82 Acres	

1. Outline the acreage dedicated to the subject well by colored pencil or hachure marks on the plat below.
See attached plat for acreage dedication
2. If more than one lease is dedicated to the well, outline each and identify the ownership thereof (both as to working interest and royalty). Dedicated Acreage includes NE/NW and NW/NW of Section 30, T31N, R7W
Lease # SF079082, Unit Tract # 16A
3. If more than one lease of different ownership is dedicated to the well, have the interests of all owners been consolidated by communitization, unitization, force-pooling, etc?

☒ Yes ☐ No If answer is "yes," type of consolidation Unitization

If answer is "no," list the owners and tract descriptions which have actually been consolidated. (Use reverse side of this form if necessary.)

No allowable will be assigned to the well until all interests have been consolidated (by communitization, unitization, forced-pooling, or otherwise) or until a non-standard unit, eliminating such interests, has been approved by the Division.



CERTIFICATION

I hereby certify that the information contained herein is true and complete to the best of my knowledge and belief.

Name William C. Edwards
Position Operations Manager
Company Blackwood & Nichols Co., Ltd.
Date January 18, 1989

I hereby certify that the location shown on this plat was plotted from field notes of actual surveys made by me or under my supervision, and that the same is true and correct to the best of my knowledge and belief.

Date Surveyed 11-22-88
Registered Professional Engineer and/or Land Surveyor

William C. Edwards
Certificate No.

R. 8 W. R. 7 W.

Case #1005
Order #R-749

T.

Case #1006 31
R-750-A

N.

Case #1007
R-751

Case #1008
R-752

30

N.


Case #1009
R-753


—PORTION OF—
**NORTHEAST
BLANCO
UNIT**

**SAN JUAN & RIO ARRIBA
COUNTIES**

NEW MEXICO

- Completed Oil Well
- Location or Drilling Well
- ◇ Dry Hole
- ⬢ Abandoned Location
- ◆ Gas Well

SCALE: 1" = 3000'  DAM SITE

 - Dedicated Acreage

