

UNITED STATES
DEPARTMENT OF THE INTERIOR
BUREAU OF LAND MANAGEMENT

APPLICATION FOR PERMIT TO DRILL, DEEPEN, OR PLUG BACK

1a. TYPE OF WORK
DRILL ☒ DEEPEEN ☐ PLUG BACK ☐

b. TYPE OF WELL
OIL WELL ☐ GAS WELL ☒ OTHER ☐

2. NAME OF OPERATOR
Union Texas Petroleum Corporation Attn: Ken White

3. ADDRESS OF OPERATOR
P.O. Box 2120, Houston, Texas 77252

4. LOCATION OF WELL (Report location clearly and in accordance with any State requirements.)
At surface
1550 FWL & 860 FNL R/H Location
3295 FNL & 2200 FWL
At proposed prod. zone 1700 FSL, 2000' FEL

14. DISTANCE IN MILES AND DIRECTION FROM NEAREST TOWN OR POST OFFICE*
1 mile North of Farmington, New Mexico

15. DISTANCE FROM PROPOSED* LOCATION TO NEAREST PROPERTY OR LEASE LINE, FT.
(Also to nearest drig. unit line, if any)
860'

16. NO. OF ACRES IN LEASE
2480 1440

17. NO. OF ACRES ASSIGNED TO THIS WELL
N 1/2 320.00 S/320

18. DISTANCE FROM PROPOSED LOCATION* TO NEAREST WELL, DRILLING, COMPLETED, OR APPLIED FOR, ON THIS LEASE, FT.
1900'

19. PROPOSED DEPTH
6325 TVD 7100 MD

20. ROTARY OR CABLE TOOLS
Rotary

21. ELEVATIONS (Show whether DF, RT, GR, etc.)
5681 GR. DRILLING OPERATIONS AUTHORIZED ARE

22. APPROX. DATE WORK WILL START*
3-1-89

23. SUBJECT TO COMPLIANCE WITH ATTACHED PROPOSED CASING AND CEMENTING PROGRAM
"GENERAL REQUIREMENTS"

SIZE OF HOLE	SIZE OF CASING	WEIGHT PER FOOT	SETTING DEPTH	QUANTITY OF CEMENT
12-1/4"	9-5/8"	36	450	240 Circulate
8-3/4"		11.6	7100	1910

It is planned to drill 12-1/4" surface hole to approximately 450 ft. and run 9-5/8" surface pipe. The surface pipe will be cemented with the top of the cement being brought back to surface. The pipe will be pressure tested then the well will be drilled to approximately 7100 ft. with 7-7/8" bits & 4-1/2", 11.6# casing will be run and landed. The pipe will be cemented in 2 stages as follows: 1st stage- 840 sx of 50-50 POZ. 2nd stage - 1070 sx of 68-35 POZ and 50 sx of Class "B". Pressure test the pipe. Perforate the Dakota zone and fracture to stimulate production. Clean the well up and nipple down the wellhead. Connect to a gathering system after testing.

Gas from this well has been previously dedicated to a transporter.

IN ABOVE SPACE DESCRIBE PROPOSED PROGRAM. If proposal is to deepen or plug back, give data on present productive zone and proposed new productive zone. If proposal is to drill or deepen directionally, give pertinent data on subsurface locations and measured and true vertical depths. Give blowout preventer program, if any.

24. SIGNED Ken White TITLE Regulatory Permit Coordinator DATE 1-6-89
(This space for Federal or State office use)

PERMIT NO. _____ APPROVAL DATE _____
APPROVED BY _____ TITLE _____
CONDITIONS OF APPROVAL, IF ANY: _____

APPROVED
AS AMENDED
FEB 16 1989
AREA MANAGER

NM000

DD-23

N52-2335

*See Instructions On Reverse Side

NEW MEXICO OIL CONSERVATION COMMISSION WELL LOCATION AND ACREAGE DEDICATION PLAT

Form O-11
Superseded
Effective 1-1-8

All distances must be from the outer boundaries of the Section.

Operator Union Texas Petroleum			Lease Mc Cord		Well No. 2-E
Unit Letter C	Section 34	Township 30 N	Range 13 W	County San Juan	
Actual Footage Location of Well:					
860 feet from the North line and		1550 feet from the West line			
Ground Level Elev. 5681	Producing Formation Dakota	Pool Basin	Dedicated Acreage: 320 S/2-314-92		

1. Outline the acreage dedicated to the subject well by colored pencil or hatchure marks on the plat below.
2. If more than one lease is dedicated to the well, outline each and identify the ownership thereof (both as to working interest and royalty).
3. If more than one lease of different ownership is dedicated to the well, have the interests of all owners been consolidated by communitization, unitization, force-pooling, etc?

RECEIVED

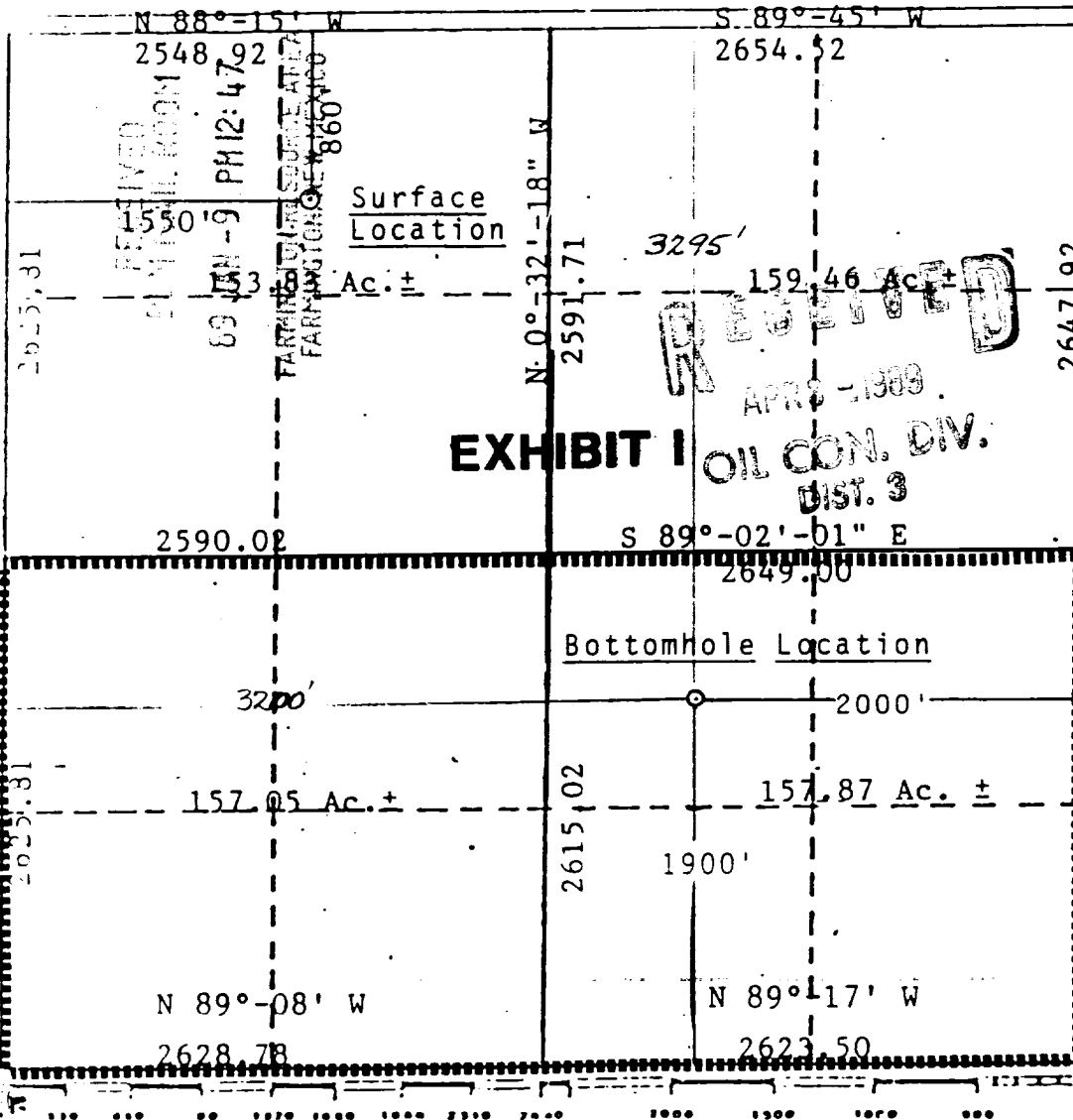
FEB 21 1989

☐ Yes ☐ No If answer is "yes," type of consolidation _____

If answer is "no," list the owners and tract descriptions which have actually been consolidated. (Use reverse side of this form if necessary.) _____

**OIL CON. DIV.
DIST. 3**

No allowable will be assigned to the well until all interests have been consolidated (by communitization, unitization, forced-pooling, or otherwise) or until a non-standard unit, eliminating such interests, has been approved by the Commission.



CERTIFICATION

I hereby certify that the information contained herein is true and complete to the best of my knowledge and belief.

Ken White

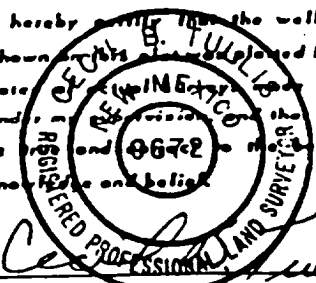
Name
Ken White

Position
Permit Coordinator

Company
Union Texas Petroleum

Date
1-6-89

I hereby certify that the well location shown on this plat is true and complete to the best of my knowledge and belief.



Date Surveyed
March 23, 1988

Registered Professional Engineer
and/or Land Surveyor

Cecil B. Tullis
Certificate No.

9672

Mc Cord 2-E
NE $\frac{1}{4}$, NW $\frac{1}{4}$ Sec. 34 T30N R13W N.M.P.M.
San Juan Co. N.M.

EXHIBIT II

