

UNITED STATES
DEPARTMENT OF THE INTERIOR
BUREAU OF LAND MANAGEMENT

APPLICATION FOR PERMIT TO DRILL, DEEPEN, OR PLUG BACK

1a. TYPE OF WORK DRILL	5. LEASE NUMBER SF-080244
1b. TYPE OF WELL GAS	6. IF INDIAN, ALL. OR TRIBE NAME
2. OPERATOR SOUTHLAND ROYALTY CO.	7. UNIT AGREEMENT NAME
3. ADDRESS & PHONE NO. OF OPERATOR P O BOX 4289 FARMINGTON, NM 87499	8. FARM OR LEASE NAME FLORANCE COM
4. LOCATION OF WELL 1200'S 2100'W	9. WELL NO. 260
	10. FIELD, POOL, OR WILDCAT BASIN FRUITLAND COAL
	11. SEC. T. R. M OR BLK. SEC. 21 T30N R09W NMPM
14. DISTANCE IN MILES FROM NEAREST TOWN 8 MILES FROM AZTEC	12. COUNTY SAN JUAN
	13. STATE NM
15. DISTANCE FROM PROPOSED LOCATION 1200' TO NEAREST PROPERTY OR LEASE LINE.	16. ACRES IN LEASE 473.94 17. ACRES ASSIGNED TO WELL 320.00
	18. DISTANCE FROM PROPOSED LOCATION TO NEAREST WELL DR. 800' COMPL., OR APPLIED FOR ON THIS LEASE.
	19. PROPOSED DEPTH 2750'
	20. ROTARY OR CABLE TOOLS ROTARY
	This action is subject to technical and procedural review pursuant to 43 CFR 3160.4 and appeal pursuant to 43 CFR 3160.6.
21. ELEVATIONS (DF, FT, GR, ETC.) 6050'GL	22. APPROX. DATE WORK WILL START

23. PROPOSED CASING AND CEMENTING PROGRAM

*SEE OPERATIONS PLAN

RECEIVED

24. AUTHORIZED BY: [Signature] REG. DIV 3-29-89
REGULATORY AFFAIRS DATE

NOTE: THIS FORMAT IS ISSUED IN LIEU OF US BLM FORM 3160-3.

OPERATIONS PLAN

DATE: MAR 29, 1981

Well Name: 260 FLORANCE COM 1200'S 2100'W
 Sec. 21 T30N R09W SAN JUAN NEW MEXICO
 BASIN FRUITLAND COAL Elevation 6050'GL

Formation tops: Surface- SAN JOSE
 Ojo Alamo- 1552
 Kirtland- 1645
 Fruitland- 2400
 Fruitland Coal Top- 2605
 Fruitland Coal Base- 2745
 Intermediate TD- 2585
 Total Depth- 2750
 Pictured Cliffs- 2755

Logging Program: Mud logs from intermediate to total depth.

Mud Program: Low solid non-dispersed mud from surface to total depth.

Casing Program:	Hole Size	Depth Interval	Csg. Size	Weight	Grade
	12 1/4"	0 - 200	9 5/8"	32.3#	H-40
	8 3/4"	0 - 2585	7"	20.0#	K-55
	6 1/4"	2535 - 2750	5 1/2"	15.5#	K-55
Tubing Program:		0 - 2750	2 7/8"	6.5#	J-55

Float Equipment: 9 5/8" surface casing - saw tooth guide shoe.

7" intermediate casing - guide shoe and self-fill insert float valve. Three centralizers run every other joint above shoe. Run insert float one joint above the guide shoe.

5 1/2" production liner - float shoe on bottom and a pre-drilled liner run to the 7" casing with a minimum 50' overlap. Liner hanger is a double slip grip type.

Wellhead Equipment: 9 5/8" x 7" x 2 7/8" x 11" 3000 psi xmas tree assembly.

Cementing:

9 5/8" surface casing - cement with 106 sacks of class "B" cement with 1/4# flocele/sack and 3% calcium chloride (125 cu ft. of slurry, 100% excess to circulate to surface). WOC 12 hours. Test casing to 600 psi for 30 minutes.

7" intermediate casing - lead with 100 sacks of 65/35 class "B" poz with 6% gel, 2% calcium chloride and 1/2 cu.ft. Perlite/sack (10.3 gallons of water/sack) tail with 100 sacks of class "B" with 2% calcium chloride. 311 cu ft. of slurry, 100% excess to cover the Ojo Alamo. Run temperature survey at 8 hours. WOC 12 hours. Test casing to 1500 psi for 30 minutes.

5 1/2" liner - do not cement.

The Fruitland coal formation will be completed.

A 3000 psi WP and 6000 psi test double gate preventer equipped with blind and pipe rams will be used for blow out prevention on this well. This gas is dedicated.

The S/2 of Section 21 is dedicated to this well.

Submit to Appropriate
District Office
State Lease - 4 copies
Fee Lease - 3 copies

State of New Mexico
Energy, Minerals and Natural Resources Department

Form C-102
Revised 1-1-89

OIL CONSERVATION DIVISION

P.O. Box 2088
Santa Fe, New Mexico 87504-2088

DISTRICT I
P.O. Box 1980, Hobbs, NM 88240

DISTRICT II
P.O. Drawer DD, Artesia, NM 88210

DISTRICT III
1000 Rio Brazos Rd., Aztec, NM 87410

WELL LOCATION AND ACREAGE DEDICATION PLAT

All Distances must be from the outer boundaries of the section

Operator SOUTHLAND ROYALTY COMPANY			Lease (SF-080244)		Well No.
Unit Letter	Section	Township	Range	County	
	11	30 North	9 West	San Juan	260
Actual Footage Location of Well: 1200 feet from the South line and 2100 feet from the West line					
Ground level Elev.	Producing Formation		Pool	Dedicated Acreage:	
6050	Fruitland Coal		Basin	320 Acres	

1. Outline the acreage dedicated to the subject well by colored pencil or hachure marks on the plat below.
2. If more than one lease is dedicated to the well, outline each and identify the ownership thereof (both as to working interest and royalty).
3. If more than one lease of different ownership is dedicated to the well, have the interest of all owners been consolidated by communitization, unitization, force-pooling, etc.?
☐ Yes ☐ No If answer is "yes" type of consolidation **communitization in progress**
If answer is "no" list the owners and tract descriptions which have actually been consolidated. (Use reverse side of this form if necessary.)
No allowable will be assigned to the well until all interests have been consolidated (by communitization, unitization, forced-pooling, or otherwise) or until a non-standard unit, eliminating such interest, has been approved by the Division.

Reissued to show moved location

OPERATOR CERTIFICATION

I hereby certify that the information contained herein is true and complete to the best of my knowledge and belief.

Signature *Peggy Bradfield*

Printed Name **Peggy Bradfield**

Position **Regulatory Affairs**

Company **Southland Royalty**

Date **3-8-89**

SURVEYOR CERTIFICATION

I hereby certify that the well location shown on this plat was plotted from field notes, actual surveys made by me or under my supervision, and that the same is true and correct to the best of my knowledge and belief.

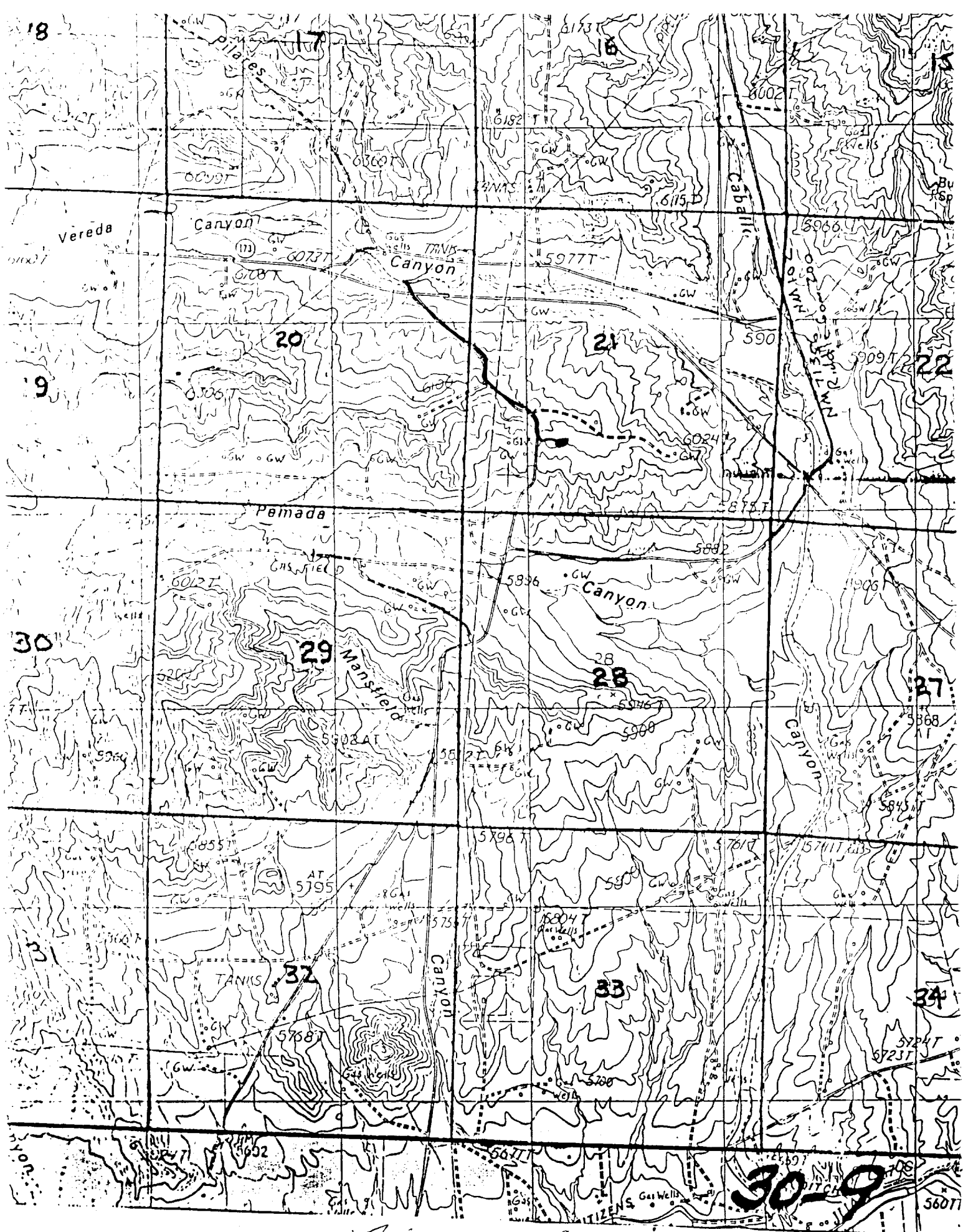
Date Surveyed **3-6-89**

Signature of Surveyor **Neale C. Edwards**

Professional Surveyor **6857**

Certificate No. **6857**

0 330 660 990 1320 1650 1980 2310 2640 2000 1500 1000 500 0



Fibonacci Com 260