

Submit to Appropriate District Office
State Lease - 6 copies
Fee Lease - 5 copies

State of New Mexico
Energy, Minerals and Natural Resources Department

Form C-101
Revised 1-1-89

OIL CONSERVATION DIVISION
P.O. Box 2088
Santa Fe, New Mexico 87504-2088

DISTRICT I
P.O. Box 1980, Hobbs, NM 88240

DISTRICT II
P.O. Drawer DD, Artesia, NM 88210

DISTRICT III
1000 Rio Brazos Rd., Aztec, NM 87410

API NO. (assigned by OCD on New Wells)

5. Indicate Type of Lease

STATE FEE

6. State Oil & Gas Lease No.

APPLICATION FOR PERMIT TO DRILL, DEEPEN, OR PLUG BACK

1a. Type of Work:

DRILL RE-ENTER DEEPEN PLUG BACK

b. Type of Well:

OIL WELL GAS WELL OTHER SINGLE ZONE MULTIPLE ZONE

7. Lease Name or Unit Agreement Name

Walker Com

2. Name of Operator

Meridian Oil Inc.

8. Well No.

729

3. Address of Operator

PO Box 4289, Farmington, NM 87499

9. Pool name or Wildcat

Basin Fruitland Coal

4. Well Location

Unit Letter A : 790 Feet From The North Line and 1310 Feet From The East Line
Section 25 Township 30N Range 9W NMPM San Juan County

10. Proposed Depth

2400'

11. Formation

Fruitland Coal

12. Rotary or C.T.

Rotary

13. Elevations (Show whether DF, RT, GR, etc.)

718' GL

14. Kind & Status Plug. Bond

statewide

15. Drilling Contractor

16. Approx. Date Work will start

upon approval

17.

PROPOSED CASING AND CEMENT PROGRAM

SIZE OF HOLE	SIZE OF CASING	WEIGHT PER FOOT	SETTING DEPTH	SACKS OF CEMENT	EST. TOP
12 1/4"	9 5/8"	32.3#	200'	125 cu.ft.	circ. surface
7 7/8"	5 1/2"	15.5#	2400'	372 cu.ft.	100% excess to cover O.A.

The Fruitland Coal formation will be completed.

A 3000 psi WP and 6000 psi test double gate preventer equipped with blind and pipe rams will be used for blow out prevention on this well.

This gas is dedicated.

The E/2 of Section 25 is dedicated to this well.

IN ABOVE SPACE DESCRIBE PROPOSED PROGRAM: IF PROPOSAL IS TO DEEPEN OR PLUG BACK, GIVE DATA ON PRESENT PRODUCTIVE ZONE AND PROPOSED NEW PRODUCTIVE ZONE. GIVE BLOWOUT PREVENTER PROGRAM, IF ANY.

I hereby certify that the information above is true and complete to the best of my knowledge and belief.

SIGNATURE [Signature]

TITLE Regulatory Affairs

DATE 5-8-89

TYPE OR PRINT NAME

TELEPHONE NO.

(This space for State Use)

APPROVED BY [Signature]

TITLE DEPUTY OIL & GAS INSPECTOR, DIST. #3

DATE MAY 11 1989

CONDITIONS OF APPROVAL, IF ANY:

HOLD C-104 FOR CR

APPROVAL EXPIRES 11-11-89
UNLESS WORK HAS COMMENCED.
SPUD NOTICE MUST BE SUBMITTED
WITHIN 30 DAYS

OIL CONSERVATION DIVISION
 P.O. Box 2088
 Santa Fe, New Mexico 87504-2088

DISTRICT I
 P.O. Box 1980, Hobbs, NM 88240

DISTRICT II
 P.O. Drawer 00, Artesia, NM 88210

DISTRICT III
 1000 Rio Brizos Rd., Aztec, NM 87410

WELL LOCATION AND ACREAGE DEDICATION PLAT
 All Distances must be from the outer boundaries of the section

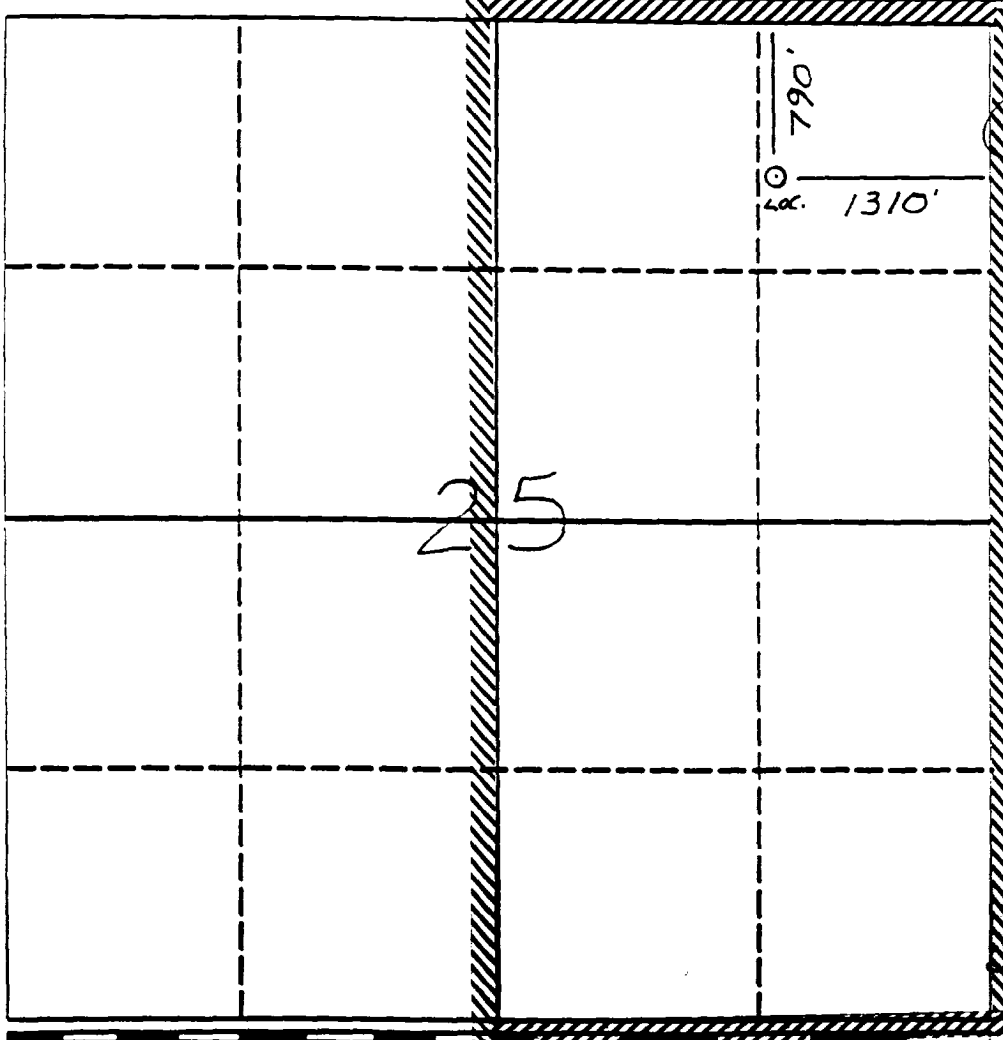
Operator Meridian Oil Inc.		Lease Walker Com (Fee)	Well No. 729
Unit Letter A	Section 25	Township 30 North	Range 9 West
Actual Footage Location of Well: 790 feet from the North line and 1310 feet from the East line		Country NMNM	San Juan
Ground level Elev. 5718'	Producing Formation Fruitland Coal	Pool Basin	Dedicated Acreage: 331.38 Acres

- Outline the acreage dedicated to the subject well by colored pencil or hatchure marks on the plat below.
- If more than one lease is dedicated to the well, outline each and identify the ownership thereof (both as to working interest and royalty).
- If more than one lease of different ownership is dedicated to the well, have the interest of all owners been consolidated by communitization, unitization, force-pooling, etc.?

Yes No If answer is "yes" type of consolidation Communitization agreement being prepared

If answer is "no" list the owners and tract descriptions which have actually been consolidated. (Use reverse side of this form if necessary.)

No allowable will be assigned to the well until all interests have been consolidated (by communitization, unitization, force-pooling, or otherwise) or until a non-standard unit, eliminating such interest, has been approved by the Division.



OPERATOR CERTIFICATION

I hereby certify that the information contained herein is true and complete to the best of my knowledge and belief.

Peggy Bradfield
 Signature

Peggy Bradfield
 Printed Name

Regulatory Affairs
 Position

Meridian Oil Inc.
 Company

5-8-89
 Date

SURVEYOR CERTIFICATION

I hereby certify that the well location shown on this plat was plotted from field notes or actual surveys made by me or under my supervision, and that the same is true and correct to the best of my knowledge and belief.

4-28-89
 Date Surveyed

Neale C. Edwards
 Signature of Seeker

Professional Surveyor

REGISTERED LAND SURVEYOR

Neale C. Edwards
 Certificate No. **685T**

