

UNITED STATES
DEPARTMENT OF THE INTERIOR
GEOLOGICAL SURVEY

APPLICATION FOR PERMIT TO DRILL, DEEPEN, OR PLUG BACK

1a. TYPE OF WORK

DRILL ☒DEEPEN ☐PLUG BACK ☐

b. TYPE OF WELL

OIL
WELL ☐GAS
WELL ☒

OTHER

SINGLE
ZONE ☒MULTIPLE
ZONE ☐

2. NAME OF OPERATOR

Blackwood & Nichols Co., LTD

3. ADDRESS OF OPERATOR

P.O. Box 1237, Durango, CO 81302-1237

4. LOCATION OF WELL (Report location clearly and in accordance with any State requirements.)*

At surface
1330' FNL, 1330' FEL

At proposed prod. zone

14. DISTANCE IN MILES AND DIRECTION FROM NEAREST TOWN OR POST OFFICE*

16.5 miles NE of Blanco, New Mexico

15. DISTANCE FROM PROPOSED*

LOCATION TO NEAREST
PROPERTY OR LEASE LINE, FT.
(Also to nearest drg. unit line, if any)

1330'

18. DISTANCE FROM PROPOSED LOCATION*

TO NEAREST WELL, DRILLING, COMPLETED,
OR APPLIED FOR, ON THIS LEASE, FT.

500'

16. NO. OF ACRES IN LEASE

2056.12

19. PROPOSED DEPTH

3515'

17. NO. OF ACRES ASSIGNED
TO THIS WELL

320

20. ROTARY OR CABLE TOOLS

Rotary

21. ELEVATIONS (Show whether DF, RT, GR, etc.)

6437' GL

DRILLING OPERATIONS AUTHORIZED ARE

SUBJECT TO COMPLIANCE WITH ATTACHED ~~This action is subject to technical and~~

23.

PROPOSED PROGRAM ~~procedural review pursuant to 43 CFR 3105.3~~GENERAL REQUIREMENTS ~~and appeal pursuant to 43 CFR 3105.4.~~

QUANTITY OF CEMENT

SIZE OF HOLE	SIZE OF CASING	WEIGHT PER FOOT	SETTING DEPTH	QUANTITY OF CEMENT
12 1/4"	9 5/8"	36 #	300'	207 cuft to circulate
8 3/4"	7"	23 #	3515'	910 cuft to circulate

Propose to spud in the San Jose formation. Will drill a 12 1/4" hole to a TD of 300'. Surface casing will be run and cemented, with cement returns to surface. WOC 12 hours. Test to 600 psi/30 mins. Drill an 8 3/4" hole to a TD of 3515' with fresh water mud. No poisonous gases are anticipated. Weighted mud will be used to drill the Fruitland coals. Logs will be run at TD. Production casing will be run and cemented in two stages, with cement returns to surface. The drilling rig will be released and a completion unit moved on. Cased hole correlation and bond logs will be run. The Fruitland coals will be perforated and frac'd with a fresh water base gel fluid.

Surface is Fee.

RECEIVED

MAY 17 1989

IN ABOVE SPACE DESCRIBE PROPOSED PROGRAM: If proposal is to deepen or plug back, include data on cement, productive zone and proposed new productive zone. If proposal is to drill or deepen directionally, give pertinent data on subsurface location and measure and true vertical depths. Give blowout preventer program, if any.

24.

SIGNED

William F. [Signature]

TITLE

Operations Manager

DATE

March 31, 1989

(This space for Federal or State office use)

PERMIT NO.

APPROVAL DATE

APPROVED

AS AMENDED

APPROVED BY

TITLE

MAY 12 1989

CONDITIONS OF APPROVAL, IF ANY:

*See Instructions On Reverse Side

AREA MANAGER

NMOCC

OIL CONSERVATION DIVISION

P. O. BOX 2088

STATE OF NEW MEXICO
ENERGY AND MINERALS DEPARTMENT

SANTA FE, NEW MEXICO 87501

Form C-102
Revised 10-1-71

All distances must be from the outer boundaries of the Section.

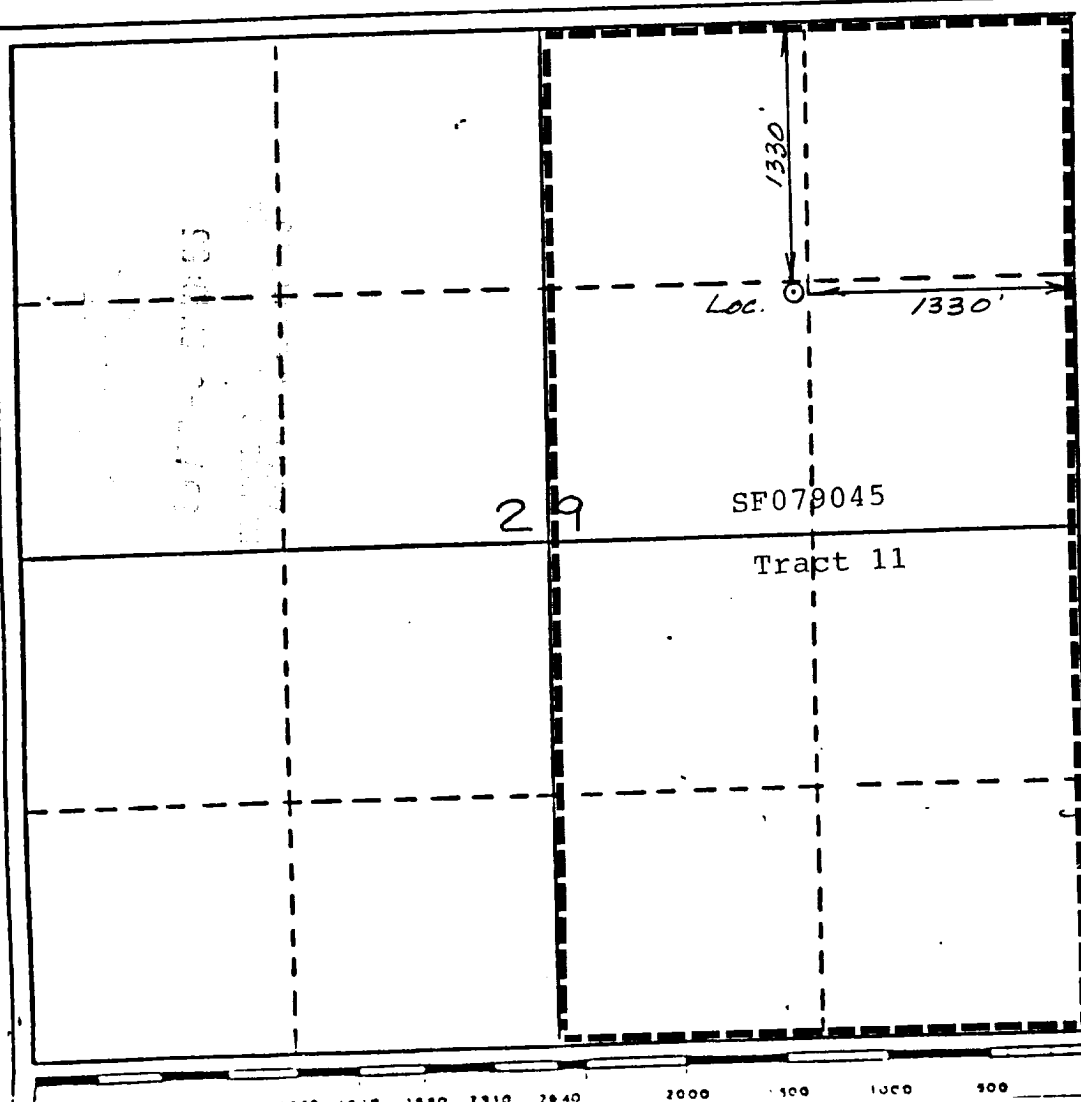
Operator Blackwood & Nichols Co., LTD.		Lease Northeast Blanco Unit		Well No. 472
Unit Letter G	Section 29	Township 31 North	Range 7 West	County San Juan
Actual Footage Location of Wells 1330 feet from the North line and 1330 feet from the East line				
Ground Level Elev. 6437	Producing Formation Fruitland Coal		Pool Basin Fruitland Coal	Dedicated Acreage: 320 Acres

1. Outline the acreage dedicated to the subject well by colored pencil or hachure marks on the plat below.
2. If more than one lease is dedicated to the well, outline each and identify the ownership thereof (both as to working interest and royalty).
3. If more than one lease of different ownership is dedicated to the well, have the interests of all owners been consolidated by communitization, unitization, force-pooling, etc?

☐ Yes ☐ No If answer is "yes," type of consolidation NA

If answer is "no," list the owners and tract descriptions which have actually been consolidated. (Use reverse side of this form if necessary.)

No allowable will be assigned to the well until all interests have been consolidated (by communitization, unitization, forced-pooling, or otherwise) or until a non-standard unit, eliminating such interests, has been approved by the Division



CERTIFICATION

I hereby certify that the information contained herein is true and complete to the best of my knowledge and belief.

Name William F. Clark
Position Operations Manager
Company Blackwood & Nichols Co.

Date March 31, 1989

I hereby certify that the location shown on this plat was obtained from the notes of actual surveys made by me or under my supervision, and that the same is true and correct to the best of my knowledge and belief.

Date Surveyed
11/28/88

Registered Professional Engineer
and/or Land Surveyor

Reels C. Edwards

Certificate No.

6857