

UNITED STATES
DEPARTMENT OF THE INTERIOR
GEOLOGICAL SURVEY

APPLICATION FOR PERMIT TO DRILL, DEEPEN, OR PLUG BACK

1. TYPE OF WORK
DRILL ☒ DEEPEN ☐ PLUG BACK ☐

2. NAME OF OPERATOR
Blackwood & Nichols Co., Ltd.

3. ADDRESS OF OPERATOR
P.O. Box 1237, Durango, Colorado, 81302-1237

4. LOCATION OF WELL (Report location clearly and in accordance with any State requirements.)
At surface 2330' FNL - 150' FEL
At proposed prod. zone same

5. LEASE DESIGNATION AND SERIAL NO.
SF079045

6. IF INDIAN, ALLOTTEE OR TRIBE NAME

7. UNIT AGREEMENT NAME
Northeast Blanco

8. FARM OR LEASE NAME
Northeast Blanco Unit

9. WELL NO.
414

10. FIELD AND POOL, OR WILDCAT
Basin Fruitland Coal

11. SEC., T., R., M., OR RLK.
AND SURVEY OR AREA
H Sec. 30, T31N, R7W, NMPM

12. COUNTY OR PARISH
San Juan

13. STATE
NM

14. DISTANCE IN MILES AND DIRECTION FROM NEAREST TOWN OR POST OFFICE*
16 miles NE of Blanco, NM

15. DISTANCE FROM PROPOSED*
LOCATION TO NEAREST
PROPERTY OR LEASE LINE, FT.
(Also to nearest drlg. unit line, if any)
1010'

16. NO. OF ACRES IN LEASE
2056.12

17. NO. OF ACRES ASSIGNED
TO THIS WELL
320

18. DISTANCE FROM PROPOSED LOCATION*
TO NEAREST WELL, DRILLING, COMPLETED,
OR APPLIED FOR, ON THIS LEASE, FT.
600'

19. PROPOSED DEPTH
3541'

20. ROTARY OR CABLE TOOLS
Rotary

21. ELEVATIONS (Show whether DF, RT, GR, etc.)
6376 GLTD

22. APPROX. DATE WORK WILL START*
April 1, 1989

23. PROPOSED CASING AND CEMENTING PROGRAM
and append to this program

SIZE OF HOLE	SIZE OF CASING	WEIGHT PER FOOT	SETTING DEPTH	GENERAL QUANTITY OF CEMENT
12 1/4"	9 5/8"	36#	300'	207 cuft to circulate
7 7/8"	5 1/2"	17#	3541'	1,074 cuft to circulate

Propose to spud in the San Jose formation. Will drill a 12 1/4" surface hole to a TD of 300'. Run and cement surface casing with cement returns to surface. WOC 12 hours. Test to 600 psi. Drill a 7 7/8" hole to a TD of 3541' using fresh water mud. No poisonous gases are anticipated. Weighted mud will be used to drill the Fruitland coals. Logs will be run at TD. Casing will be run and cemented using a two stage cement job, with cement returns to surface. The drilling rig will be released and a completion unit moved on. Cased hole bond and correlation logs will be run. The Fruitland coals will be perforated and frac'd using a fresh water based gel fluid.

This APD applies for a Gas Pipeline ROW as shown on the Vicinity Map
Surface ownership is Bureau of Reclamation

IN ABOVE SPACE DESCRIBE PROPOSED PROGRAM: If proposal is to deepen or plug back, give data on present productive zone and proposed new productive zone. If proposal is to drill or deepen directionally, give pertinent data on subsurface locations and measured and true vertical depths. Give blowout preventer program, if any.

24. SIGNED William F. Clark TITLE Operations Manager DATE Jan 18, 1989
(This space for Federal or State office use)

PERMIT NO. _____ APPROVAL DATE _____
APPROVED BY _____ TITLE _____
CONDITIONS OF APPROVAL, IF ANY:

NMOCC

*See Instructions On Reverse Side

RECEIVED
MAY 17 1989
OIL CON. DIV.
AS AMENDED
MAY 11 1989
AREA MANAGER

NSL-2631

STATE OF NEW MEXICO
ENERGY AND MINERALS DEPARTMENT

OIL CONSERVATION DIVISION

P. O. BOX 2088

SANTA FE, NEW MEXICO 87501

Form C-102
Revised 10-1-

All distances must be from the outer boundaries of the Section.

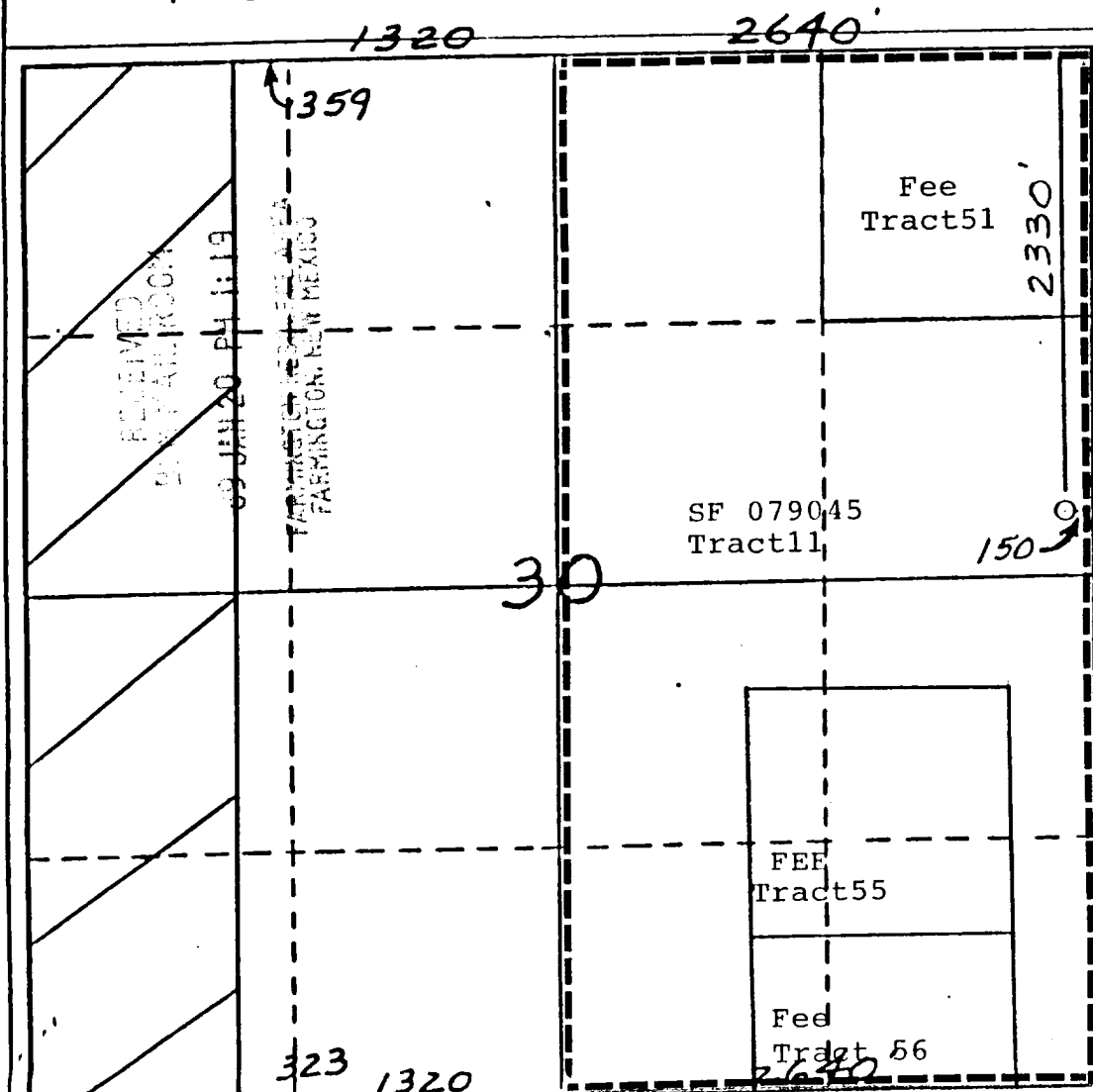
Operator Blackwood & Nichols Co., LTD.			Lease Northeast Blanco Unit		Well No. 414
Unit Letter H	Section 30	Township 31 North	Range 7 West	County San Juan	
Actual Footage Location of Well 2330 feet from the North line and 150 feet from the East line					
Ground Level Elev. 6376	Producing Formation Fruitland Coal		Pool Basin Fruitland Coal		Dedicated Acreage: 320

1. Outline the acreage dedicated to the subject well by colored pencil or hatchure marks on the plat below.
2. If more than one lease is dedicated to the well, outline each and identify the ownership thereof (both as to working interest and royalty).
3. If more than one lease of different ownership is dedicated to the well, have the interests of all owners been consolidated by communitization, unitization, force-pooling, etc?

☒ Yes ☐ No If answer is "yes," type of consolidation Unitization

If answer is "no," list the owners and tract descriptions which have actually been consolidated. (Use reverse side of this form if necessary.)

No allowable will be assigned to the well until all interests have been consolidated (by communitization, unitization, forced-pooling, or otherwise) or until a non-standard unit, eliminating such interests, has been approved by the Division.



CERTIFICATION

I hereby certify that the information contained herein is true and complete to the best of my knowledge and belief.

William F. Edwards
Name

Position
Operations Manager

Company
Blackwood & Nichols Co.

Date
Jan 19, 1989

I hereby certify that the information shown on this plat was plotted from the notes of actual survey made by me under supervision, and that the same is true and correct to the best of my knowledge.

Heale C. Edwards
Date Surveyed

12/27/88

Registered Professional Engineer and/or Land Surveyor

Heale C. Edwards

