

**UNITED STATES  
DEPARTMENT OF THE INTERIOR  
GEOLOGICAL SURVEY**

**APPLICATION FOR PERMIT TO DRILL, DEEPEN, OR PLUG BACK**

## 1a. TYPE OF WORK

DRILL ☒DEEPEN ☐PLUG BACK ☐

## b. TYPE OF WELL

OIL  
WELL ☐GAS  
WELL ☒

OTHER

SINGLE  
ZONE ☒MULTIPLE  
ZONE ☐

## 2. NAME OF OPERATOR

DUGAN PRODUCTION CORP.

## 3. ADDRESS OF OPERATOR

P.O. Box 420, Farmington, NM 87499

## 4. LOCATION OF WELL (Report location clearly and in accordance with any State requirements.)\*

At surface

950' FNL &amp; 910' FWL

At proposed prod. zone

## 14. DISTANCE IN MILES AND DIRECTION FROM NEAREST TOWN OR POST OFFICE\*

approx. 5 miles north of Kirtland, New Mexico

## 15. DISTANCE FROM PROPOSED\* 910' FWL of Sec. 17

LOCATION TO NEAREST  
PROPERTY OR LEASE LINE, FT.  
(Also to nearest drlg. unit line, if any)

## 16. NO. OF ACRES IN LEASE

560

## 17. NO. OF ACRES ASSIGNED

TO THIS WELL 320

## 18. DISTANCE FROM PROPOSED LOCATION\*

TO NEAREST WELL, DRILLING, COMPLETED,  
OR APPLIED FOR, ON THIS LEASE, FT.

approx. 2500'

## 19. PROPOSED DEPTH

6000'

## 20. ROTARY OR CABLE TOOLS

Rotary

## 21. ELEVATIONS (Show whether DF, RT, GR, etc.)

5498' GL; 5510' RKB

## 23.

## PROPOSED CASING AND CEMENTING PROGRAM

SIZE OF HOLE	SIZE OF CASING	WEIGHT PER FOOT	SETTING DEPTH	QUANTITY OF CEMENT
12-1/4"	8-5/8"	24#	200'	160 cu.ft. circ. to surface
7-7/8"	4-1/2"	10.5#	6000'	1593 cu.ft. circ. to surface

Plan to drill a 12-1/4" hole and set 200' of 8-5/8" OD, 24#, J-55 surface casing; then plan to drill a 7-7/8" hole to total depth with gel-water-mud program to test Dakota formation. Plan to run IES and CDL logs. If determined productive, will run 4-1/2", 10.5#, J-55 casing, selectively perforate, frac, clean out after frac and complete well.

**RECEIVED**

MAY 19 1989

**OIL CON. DIV.  
DIST. 3**

IN ABOVE SPACE DESCRIBE PROPOSED PROGRAM: If proposal is to deepen or plug back, give data on present productive zone and proposed new productive zone. If proposal is to drill or deepen directionally, give pertinent data on subsurface locations and measured and true vertical depths. Give blowout preventer program, if any.

24.

SIGNED

Sherman E. Dugan

TITLE

Vice-President

DATE

3-29-89

(This space for Federal or State office use)

PERMIT NO.

APPROVAL DATE

**APPROVED  
AS AMENDED**

"Approval of this proposal is based on the information submitted and is not a guarantee of results."

APPROVED BY

TITLE

MAY 16 1989

Not valid unless approved by the following:

holds legal or other title to the land.

or title to this land.

**AREA MANAGER**

\*See Instructions On Reverse Side

Submit to Appropriate  
District Office  
State Lease - 4 copies  
Fee Lease - 3 copies

State of New Mexico  
Energy, Minerals and Natural Resources Department

Form C-102  
Revised 1-1-89

OIL CONSERVATION DIVISION

DISTRICT I  
P.O. Box 1980, Hobbs, NM 88240

P.O. Box 2088  
Santa Fe, New Mexico 87504-2088

DISTRICT II  
P.O. Drawer DD, Artesia, NM 88210

DISTRICT III  
1000 Rio Brazos Rd., Aztec, NM 87410

WELL LOCATION AND ACREAGE DEDICATION PLAT

All Distances must be from the outer boundaries of the section

Operator Dugan Production Corporation			Lease Turks Toast		Well No. 3
Unit Letter D	Section 17	Township 30 North	Range 14 West	County NMPM	San Juan
Actual Footage Location of Well: 950 feet from the North line and 910 feet from the West line					
Ground level Elev. 5498	Producing Formation Dakota		Pool Basin Dakota		Dedicated Acreage: 320 Acres

1. Outline the acreage dedicated to the subject well by colored pencil or hatchure marks on the plat below.
2. If more than one lease is dedicated to the well, outline each and identify the ownership thereof (both as to working interest and royalty).
3. If more than one lease of different ownership is dedicated to the well, have the interest of all owners been consolidated by communitization, unitization, force-pooling, etc.?  
☐ Yes ☐ No If answer is "yes" type of consolidation \_\_\_\_\_  
If answer is "no" list the owners and tract descriptions which have actually been consolidated. (Use reverse side of this form if necessary.) \_\_\_\_\_  
No allowable will be assigned to the well until all interests have been consolidated (by communitization, unitization, forced-pooling, or otherwise) or until a non-standard unit, eliminating such interest, has been approved by the Division.

950'			
910'			
DPC Ls. #NM-19163			
	SECTION	17	

OPERATOR CERTIFICATION

I hereby certify that the information contained herein is true and complete, to the best of my knowledge and belief.

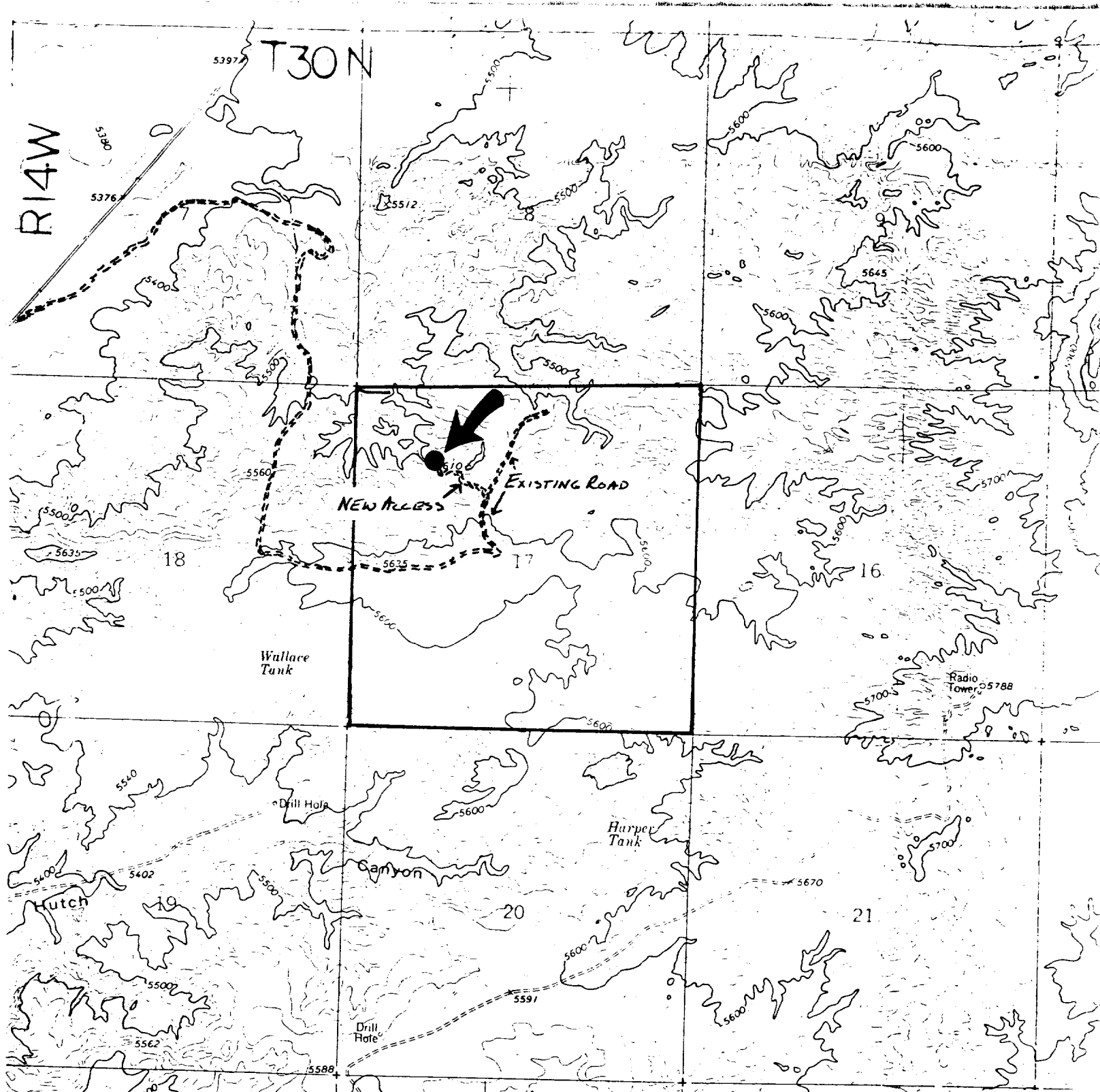
Signature <i>Sherman E. Dugan</i>
Printed Name Sherman E. Dugan
Position Vice-President
Company Dugan Production Corp.
Date 3-29-89

SURVEYOR CERTIFICATION

I hereby certify that the well location shown on this plat was plotted from field notes of actual surveys made by me or under my supervision, and that the same is true and correct to the best of my knowledge and belief.

Date Surveyed March 10, 1989
Signature & Seal of Professional Surveyor <i>Edgar L. Risenhoover</i>
Certificate No. 5979
Edgar L. Risenhoover, L.S.

0 330 660 990 1320 1650 1980 2310 2640 2000 1500 1000 500 0



**DUGAN PRODUCTION CORP. - Turks Toast #3**  
Existing Roads Exhibit E

Vicinity of nearest town or reference pt.  
5 miles north of Kirtland, New Mexico

Type of surface dirt

Conditions good

Other \_\_\_\_\_

Reference map: USGS map Youngs Lake  
N3645-W10815/7.5, 1963, photorevised 1979

**DUGAN PRODUCTION CORP. - Turks Toast #3**  
Planned Access Road(s) Exhibit E

Width 14' Maximum grades 8%

Drainage design \_\_\_\_\_

Cuts & Fills see Cut & Fill Diagram

Surfacing material \_\_\_\_\_

☒ Turnouts

☒ Waterbars

☒ Culverts

☒ Gates

☒ Cattleguards

☒ Fence cuts

Access road(s) (do) do not cross (Fed) Ind land.