

UNITED STATES
DEPARTMENT OF THE INTERIOR
GEOLOGICAL SURVEY

APPLICATION FOR PERMIT TO DRILL, DEEPEN, OR PLUG BACK

1a. TYPE OF WORK

DRILL ☒DEEPM 28 PM 1:5 PLUG BACK ☐

b. TYPE OF WELL

OIL
WELL ☐GAS
WELL ☒OTHER ☐SINGLE
ZONE ☒MULTIPLE
ZONE ☐

2. NAME OF OPERATOR

Blackwood & Nichols Co., LTD.

3. ADDRESS OF OPERATOR

P.O. Box 1237, Durango, CO 81302-1237

4. LOCATION OF WELL (Report location clearly and in accordance with any State requirements.*)

At surface

840' FSL - 1725' FWL

At proposed prod. zone

14. DISTANCE IN MILES AND DIRECTION FROM NEAREST TOWN OR POST OFFICE*

16 miles NE of Blanco, New Mexico

15. DISTANCE FROM PROPOSED*

LOCATION TO NEAREST
PROPERTY OR LEASE LINE, FT.
(Also to nearest drlg. unit line, if any)

840'

18. DISTANCE FROM PROPOSED LOCATION*

TO NEAREST WELL, DRILLING, COMPLETED,
OR APPLIED FOR, ON THIS LEASE, FT.

500'

16. NO. OF ACRES IN LEASE

2056.12

19. PROPOSED DEPTH

3270'

17. NO. OF ACRES ASSIGNED
TO THIS WELL

w/320

20. ROTARY OR CABLE TOOLS

Rotary

21. ELEVATIONS (Show whether DF, RT, GR, etc.)

6289' GL DRILLING OPERATIONS AUTHORIZED ARE

23.

SUBJECT TO COMPLIANCE WITH ATTACHED
"GENERAL REQUIREMENTS"

PROPOSED CASING AND CEMENTING PROGRAM

This action is subject to technical and
procedural review pursuant to 43 CFR 3165.3
and appeal pursuant to 43 CFR 3165.4.

SIZE OF HOLE	SIZE OF CASING	WEIGHT PER FOOT	SETTING DEPTH	
12 1/4"	9 5/8"	36 #	300'	207 cuft to circulate
8 3/4"	7"	23 #	3090'	663 cuft to circulate
6 1/4"	5 1/2"	17 #	2990-3270'	39 cuft to circulate

Propose to spud in the San Jose formation. Will drill a 12 1/4" hole to a TD of 300'. Surface casing will be run and cemented with cement returns to surface. WOC 12 hours. Pressure test to 600 psi/30 mins. Drill an 8 3/4" hole with fresh water mud to a TD of 3090'. No abnormal pressures or poisonous gases are anticipated. Run and cement intermediate casing with cement returns to surface. WOC 12 hours. Test to 1500 psi/30 mins. Drill a 6 1/4" hole through the Fruitland coals with water and air. Run a 5 1/2" liner. The liner may or may not be cemented, depending on the wells natural producing ability.

Surface is BLM

RECEIVED

JUN 05 1989

OIL CON. DIV.

IN ABOVE SPACE DESCRIBE PROPOSED PROGRAM: If proposal is to deepen or plug back, give data on present productive zone and proposed new productive zone. If proposal is to drill or deepen directionally, give pertinent data on subsurface locations, measured and true vertical depths. Give blowout preventer program, if any.

24.

SIGNED *William F. Clark*

TITLE Operations Manager

DATE March 27, '89

(This space for Federal or State office use)

PERMIT NO. _____

APPROVAL DATE _____

APPROVED

AS AMENDED

APPROVED BY _____

TITLE _____

CONDITIONS OF APPROVAL, IF ANY:

MAY 27 1989

AREA MANAGER

*See Instructions On Reverse Side

NIMOCG

All distances must be from the outer boundaries of the Section.

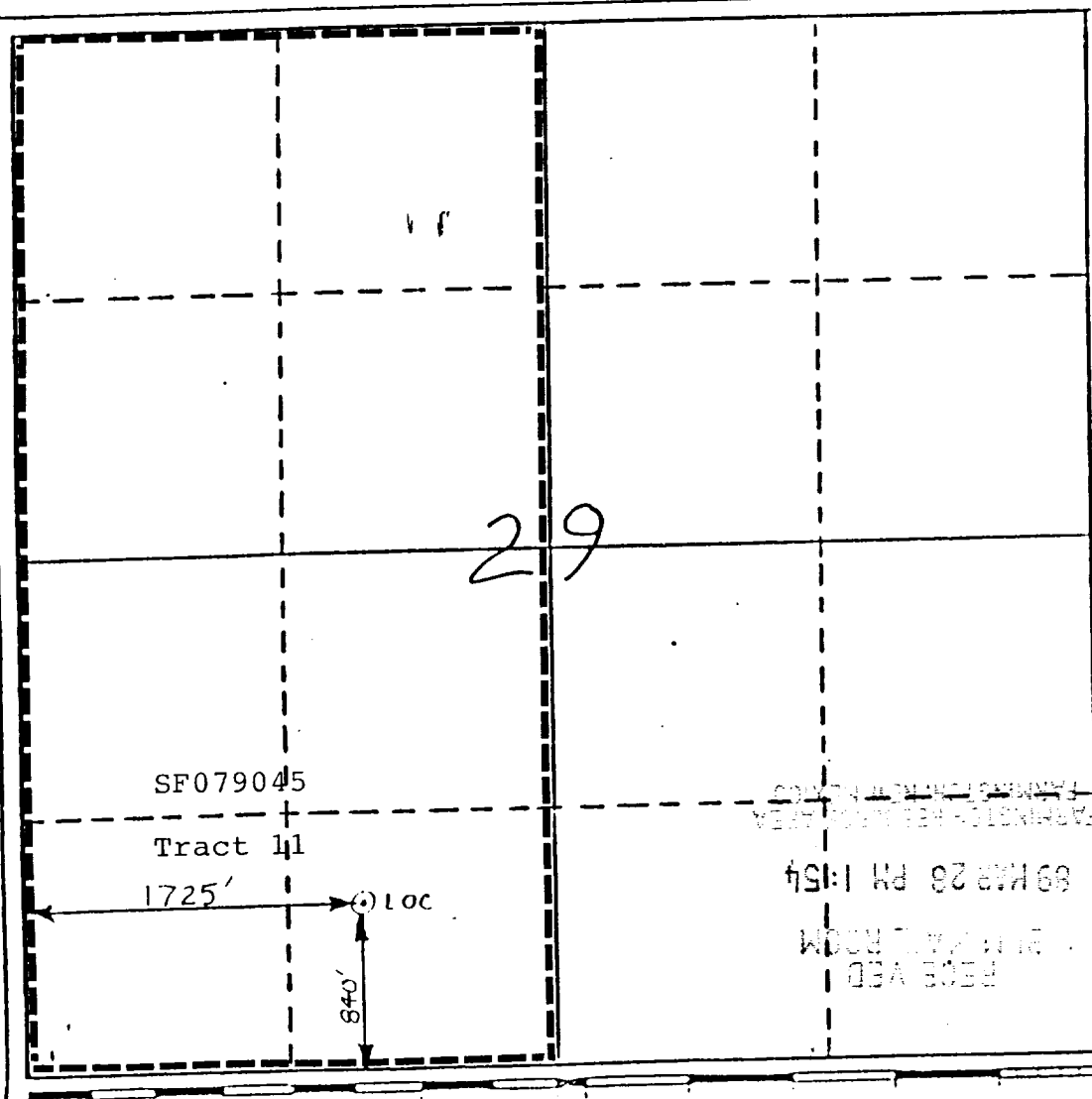
Operator Blackwood & Nichols Co., LTD.		Lease Northeast Blanco Unit		Well No. 412
Unit Letter N	Section 29	Township 31 North	Range 7 West	County San Juan
Actual Footage Location of Wells 840 feet from the South line and 1725 feet from the West line				
Ground Level Elev. 6289'	Producing Formation Basin Fruitland	Pool Basin Fruitland Coal	Dedicated Acreage: 320 Acres	

1. Outline the acreage dedicated to the subject well by colored pencil or hatchure marks on the plat below.
2. If more than one lease is dedicated to the well, outline each and identify the ownership thereof (both as to working interest and royalty).
3. If more than one lease of different ownership is dedicated to the well, have the interests of all owners been consolidated by communitization, unitization, force-pooling, etc?

☐ Yes ☐ No If answer is "yes," type of consolidation N/A

If answer is "no," list the owners and tract descriptions which have actually been consolidated. (Use reverse side of this form if necessary.)

No allowable will be assigned to the well until all interests have been consolidated (by communitization, unitization, forced-pooling, or otherwise) or until a non-standard unit, eliminating such interests, has been approved by the Division.



CERTIFICATION

I hereby certify that the information contained herein is true and complete to the best of my knowledge and belief.

Name William F. Blair
Position Operations Manager
Company Blackwood & Nichols Co.
Date 3-27-89

I hereby certify that the location shown on this plat was sighted from the notes of actual survey made by me or under my supervision, and that the same is true and correct to the best of my knowledge and belief.

Neale C. Edwards
Date Surveyed 11-30-88

Registered Professional Engineer and/or Land Surveyor

Neale C. Edwards

Certificate No. 6857

