

UNITED STATES
DEPARTMENT OF INTERIOR
BUREAU OF LAND MANAGEMENT

FORM APPROVED
Budget Bureau No. 1004-0135
Expires: March 31, 1993

SUNDRY NOTICE AND REPORTS ON WELLS

Do not use this form for proposals to drill or to deepen or reentry to a different reservoir. Use "APPLICATION TO DRILL" for permit for such proposals

RECEIVED
OIL CON. DIV.

99 AUG 15 PM 1:619

5. Lease Designation and Serial No.
SF-078772

If Indian, Allottee or Tribe Name

SUBMIT IN TRIPPLICATE

070 PATENTINGTON, NM

If Unit or CA, Agreement Designation
ROSA UNIT

1. Type of Well
☐ Oil Well ☒ Gas Well ☐ Other

Well Name and No.
ROSA UNIT #237

2. Name of Operator
WILLIAMS PRODUCTION COMPANY

API Well No.
30-045-27410

3. Address and Telephone No.
PO BOX 3102 MS 37-2, TULSA, OK 74101 (918) 573-6254

Field and Pool, or Exploratory Area
BASIN FRUITLAND COAL

4. Location of Well (Footage, Sec., T., R., M., or Survey Description)
1770' FSL & 1110' FWL, NW/4 SW/4, SEC 4 T31N R6W

11. County or Parish, State
SAN JUAN, NM

CHECK APPROPRIATE BOX(s) TO INDICATE NATURE OF NOTICE, REPORT, OR OTHER DATA

TYPE OF SUBMISSION

TYPE OF ACTION

☒ Notice of Intent

☐ Subsequent Report

☐ Final Abandonment

☐ Abandonment

☐ Recompletion

☐ Plugging Back

☐ Casing Repair

☐ Altering Casing

☒ Other Cavitation

☐ Change of Plans

☐ New Construction

☐ Non-Routine Fracturing

☐ Water Shut-Off

☐ Conversion to Injection

☐ Dispose Water

(Note: Report results of multiple completion on Well Completion or Recompletion Report and Log form.)

13. Describe Proposed or Completed Operations (Clearly state all pertinent details, and give pertinent dates, including estimated date of starting any proposed work. If well is directionally drilled, give subsurface locations and measured and true vertical depths for all markers and zones pertinent to this work.)*

Williams Production Company plans to cavitate this well as per the attached procedure. Estimated start date 9/15/1999.

14. I hereby certify that the foregoing is true and correct

Signed

Tracy Ross
TRACY ROSS

Title Production Analyst

Date August 10, 1999

(This space for Federal or State office use)

Approved by

Emily Baker

Title

Acting Team Lead

Date

AUG 18 1999

Conditions of approval, if any:

Title 18 U.S.C. Section 1001, makes it a crime for any person knowingly and willfully to make to any department or agency of the United States any false, fictitious or fraudulent statements or representations as to any matter within its jurisdiction.

MMCC

8-9-99

WILLIAMS PRODUCTION COMPANY
RECOMPLETION PROGNOSIS
ROSA 237

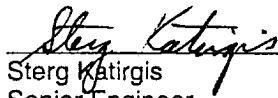
Purpose: To pull the liner and cavitate the Fruitland Coal zone.

1. Notify BLM 24 hours to moving in.
Notify Dante Vescovi with T.I.W.
Order 4 joints 5-1/2" liner: 3 will be pre drilled with 4 holes/ft. Three week lead time.
Order 3180' 2-7/8", 6.5#, J-55, 8rd, EUE tbg to land in well.
Notify Brian Wimbish with FMC to change out tbg donut and bonnet for 2-7/8".
2. MIRUSU. Nipple up BOP's, 2 blooie lines, working valves and 2" relief line. Test BOP's.
3. RIH to TD and check for fill. TOO H w/ 2-3/8" tubing and LD.
4. Notify Dante Vescovi with T.I.W. to be on location with liner setting/retrieving tool. TIH with T.I.W. setting tool on 3-1/2" drill pipe. Tag liner top at 3021'. Thread setting tool into liner hanger and pull straight out to release hanger and liner. TOH with liner and drill pipe.
5. Recondition 5-1/2" liner as necessary. Recondition JGS liner hanger with left hand threads.
6. If liner recovery with setting tool was unsuccessful, mill it out as follows.
Pickup rotary shoe, bumper sub, jars, 6-1/4" mill and 4-3/4" drill collars on 3-1/2" drill pipe and TIH.
Mill the top hold down slips off the JGS, Steel Sleeve, liner hanger @ 3021'.
TOOH. Pick up a spear and the fishing tool assembly and TIH. Spear into the liner top and jar liner loose.
7. TOO H w/ 5-1/2" Liner and LD. Re use liner if possible.
8. PU 6-1/4" bit on 3-1/2" DP and TIH. Clean out to TD @ 3206'. TOO H.
Note: During initial completion, bridges were hit at 3190-96. Couldn't get liner to TD. Landed at 3198'; 8' above TD.
9. PU 7" X 9-1/2" Underreamer and underream from 3095' to 3206'. TOO H.

CAVITATE
10. TIH w/ 6-1/4" bit on 3-1/2" DP and circulate out fill. Run 10 to 5 bbl sweeps using 1 GPB of soap if necessary.
11. PU bit drill pipe inside casing. Pressure up hole to 3300 psi (Max pressure) then surge. Do this an average of 5 times. Gauge well after each cycle.
12. Repeat. Maximum on location 3 weeks or until gas production no longer increases.

NOTE: Accurate gauges are essential.
13. TOH w/ 6-1/4" bit on 3-1/2" DP.
14. PU 5-1/2" liner on 3-1/2 DP; 4 jts 5-1/2" liner; bottom 3 jts pre drilled. Run in with reconditioned JGS liner hanger with left hand threads and L A set shoe on bottom of liner. Rotate down if necessary. Land liner @ 3206' with ±56' overlap in 7". TOO H w/ 3-1/2" DP.

15. TIH with mill and drill up liner plugs. TOH and LD DP.
16. PU 2-7/8", 6.5#, J-55, 8rd, EUE tbg and RIH. Land tubing @ $\pm 3180'$.
17. ND BOP and NU wellhead. Shut well in for buildup.
18. Cleanup location and release rig.


Sterg Katirgis
Senior Engineer

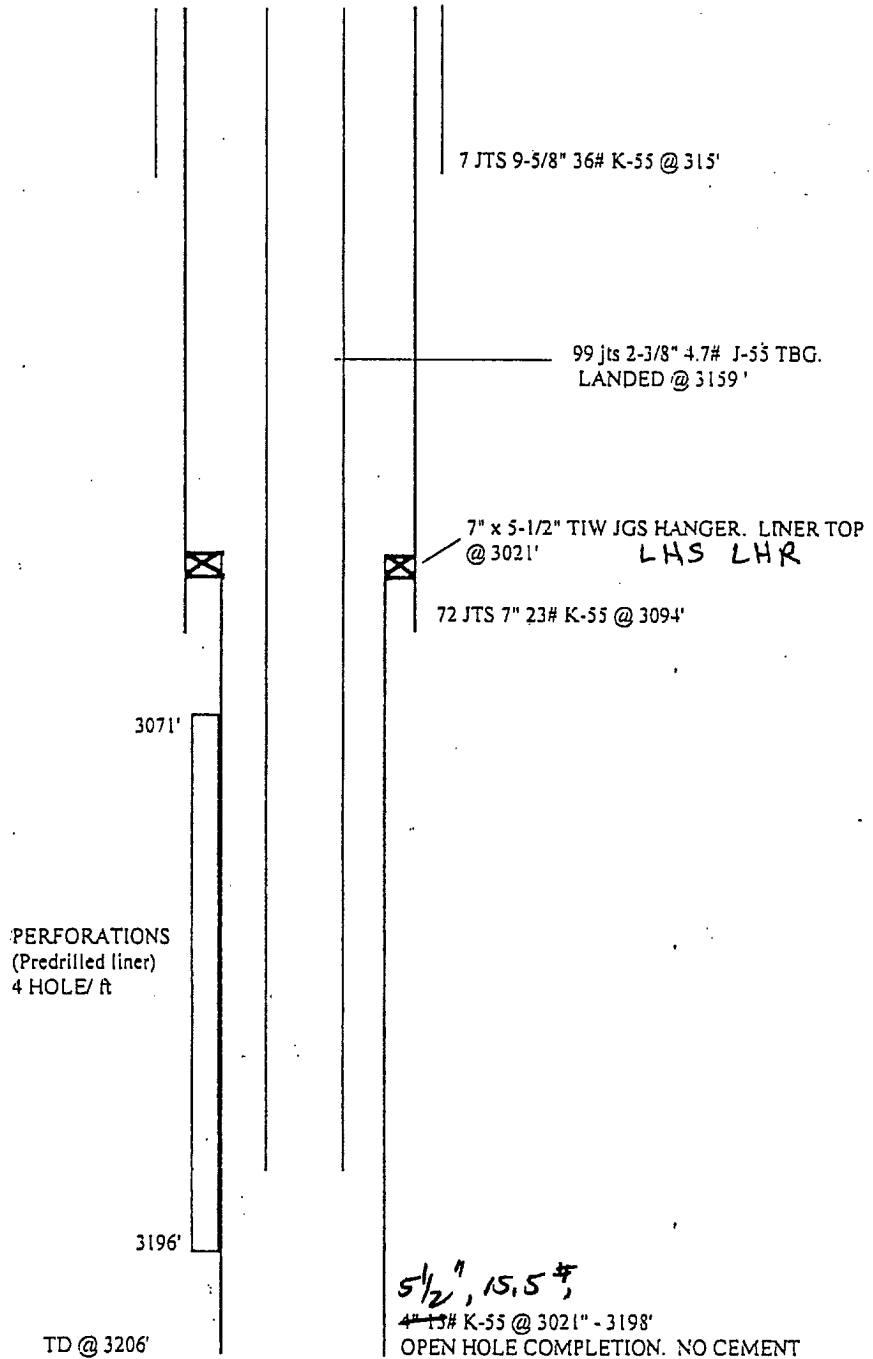
WELLBORE DIAGRAM

ROSA COM #237
FRT COAL

Location: 1770' FSL, 1110' FWL
NW/4 SW/4 Section 4L, T31N, R6W
San Juan Co., NM
Completed: 09/01/90

Elevation = 6489' GR
KB = 12'

TOPS	DEPTH
OJO ALAMO	2405'
KIRTLAND	2550'
FRUITLAND	2995'



HOLE SIZE	CASING	CEMENT	TOP OF CMT
12-1/4"	9-5/8" 36#	283 sx	SURFACE
8-3/4"	7" 23#	937 sx	SURFACE
6-1/4"	5-1/2" 15#	N/A	N/A