

UNITED STATES
DEPARTMENT OF THE INTERIOR
BUREAU OF LAND MANAGEMENT

APPLICATION FOR PERMIT TO DRILL, DEEPEN, OR PLUG BACK

1A. TYPE OF WORK

DRILL ☒

DEEPEN ☐

PLUG BACK ☐

b. TYPE OF WELL

OIL
WELL ☐

GAS
WELL ☒

OTHER

SINGLE
ZONE ☐

MULTIPLE
ZONE ☐

2. NAME OF OPERATOR

Northwest Pipeline Corporation

3. ADDRESS OF OPERATOR

3539 East 30th Street - Farmington, NM 87401

4. LOCATION OF WELL (Report location clearly and in accordance with any State requirements.)*
At surface

1560' FSL & 810' FWL NW/4 SW/4

At proposed prod. zone

Same

14. DISTANCE IN MILES AND DIRECTION FROM NEAREST TOWN OR POST OFFICE*

6 miles northwest of Navajo Dam

15. DISTANCE FROM PROPOSED*

LOCATION TO NEAREST
PROPERTY OR LEASE LINE, FT.
(Also to nearest drlg. unit line, if any)

810'

16. NO. OF ACRES IN LEASE

1280

17. NO. OF ACRES ASSIGNED
TO THIS WELL

320

18. DISTANCE FROM PROPOSED LOCATION*
TO NEAREST WELL, DRILLING, COMPLETED,
OR APPLIED FOR, ON THIS LEASE, FT.

19. PROPOSED DEPTH

3074'

20. ROTARY OR CABLE TOOLS

Rotary

21. ELEVATIONS (Show whether DF, RT, GR, etc.)

6194' GR

DRILLING OPERATIONS CONDUCTED ARE
SUBJECT TO COMPLIANCE WITH ATTACHED
"GENERAL REQUIREMENTS".

22. APPROX. DATE WORK WILL START*

8-30-89

23.

PROPOSED CASING AND CEMENTING PROGRAM

This action is subject to technical and
procedural review pursuant to 43 CFR 3165.3
and appeal pursuant to 43 CFR 3165.4.

SIZE OF HOLE	SIZE OF CASING	WEIGHT PER FOOT	SETTING DEPTH	QUANTITY OF CEMENT
13-1/2"	9-5/8"	36# K-55	200'	195 cu.ft.
8-3/4"	7"	20# K-55	2764'	222 cu.ft.
6-1/4"	5-1/2"	23# P110	2664'-3074'	None

1) Plan to drill Fruitland Formation from 2784' to 3074' and complete open hole with a perforated liner in coal zones.

2) The west half of Section 35 is dedicated to this well.

RECEIVED
AUG 16 1989
OIL CON. DIV.
DIST. 3

IN ABOVE SPACE DESCRIBE PROPOSED PROGRAM: If proposal is to deepen or plug back, give data on present productive zone and proposed new productive zone. If proposal is to drill or deepen directionally, give pertinent data on subsurface locations and measured and true vertical depths. Give blowout preventer program, if any.

24.

SIGNED

J.R. Vaughan

TITLE

Prod. & Drlg. Engineer

DATE

8-1-89

(This space for Federal or State office use)

PERMIT NO.

APPROVAL DATE

APPROVED BY

TITLE

DATE

CONDITIONS OF APPROVAL, IF ANY:

OK
(C)

*See Instructions On Reverse Side

APPROVED
AS AMENDED

AUG 14 1989
AREA MANAGER

Submit to Appropriate
District Office
State Lease - 4 copies
Fee Lease - 3 copies

State of New Mexico
Energy, Minerals and Natural Resources Department

Form C-102
Revised 1-1-89

OIL CONSERVATION DIVISION

P.O. Box 2088
Santa Fe, New Mexico 87504-2088

DISTRICT I

P.O. Box 1980, Hobbs, NM 88240

DISTRICT II

P.O. Drawer DD, Artesia, NM 88210

DISTRICT III

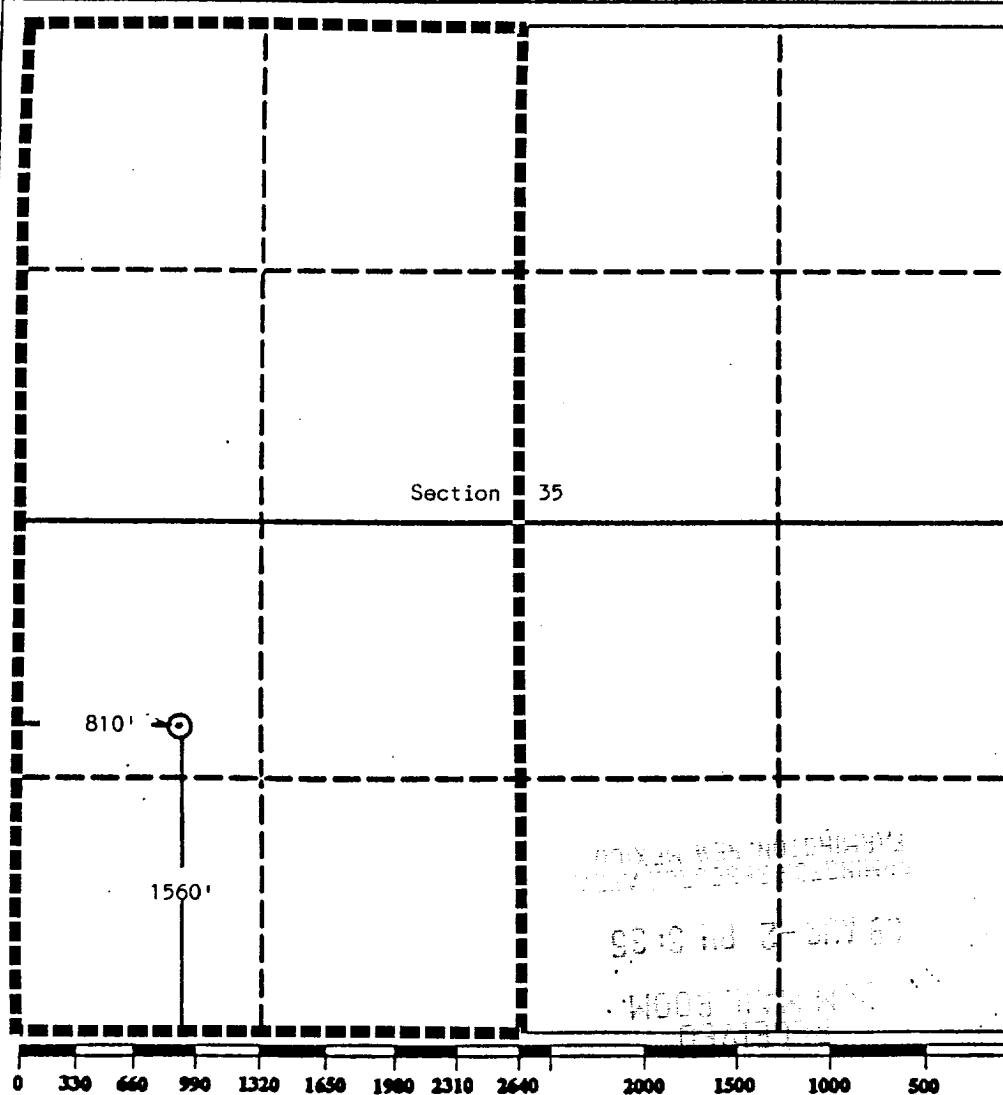
1000 Rio Brazos Rd., Aztec, NM 87410

WELL LOCATION AND ACREAGE DEDICATION PLAT

All Distances must be from the outer boundaries of the section

Operator Northwest Pipeline Corporation			Lease Blanco		Well No. 201
Unit Letter L	Section 35	Township 31 North	Range 8 West	County San Juan	
Actual Footage Location of Well: 1560 feet from the South line and 810 feet from the West line					
Ground level Elev. 6194	Producing Formation Fruitland		Pool Basin Fruitland Pool	Dedicated Acreage: 320 Acres	

1. Outline the acreage dedicated to the subject well by colored pencil or hatchure marks on the plat below.
2. If more than one lease is dedicated to the well, outline each and identify the ownership thereof (both as to working interest and royalty).
3. If more than one lease of different ownership is dedicated to the well, have the interest of all owners been consolidated by communitization, unitization, force-pooling, etc?
☒ Yes ☐ No If answer is "yes" type of consolidation Unitization
If answer is "no" list the owners and tract descriptions which have actually been consolidated. (Use reverse side of this form if necessary.)
No allowable will be assigned to the well until all interests have been consolidated (by communitization, unitization, forced-pooling, or otherwise) or until a non-standard unit, eliminating such interest, has been approved by the Division.



OPERATOR CERTIFICATION

I hereby certify that the information contained herein is true and complete to the best of my knowledge and belief.

Signature
Jeff Vaughan
Printed Name
Jeff Vaughan
Position
Prod. & Drlg. Eng.
Company
Northwest Pipeline Corp.
Date
7/31/89

SURVEYOR CERTIFICATION

I hereby certify that the well location shown on this plat was plotted from field notes of actual surveys made by me or under my supervision, and that the same is true and correct to the best of my knowledge and belief.

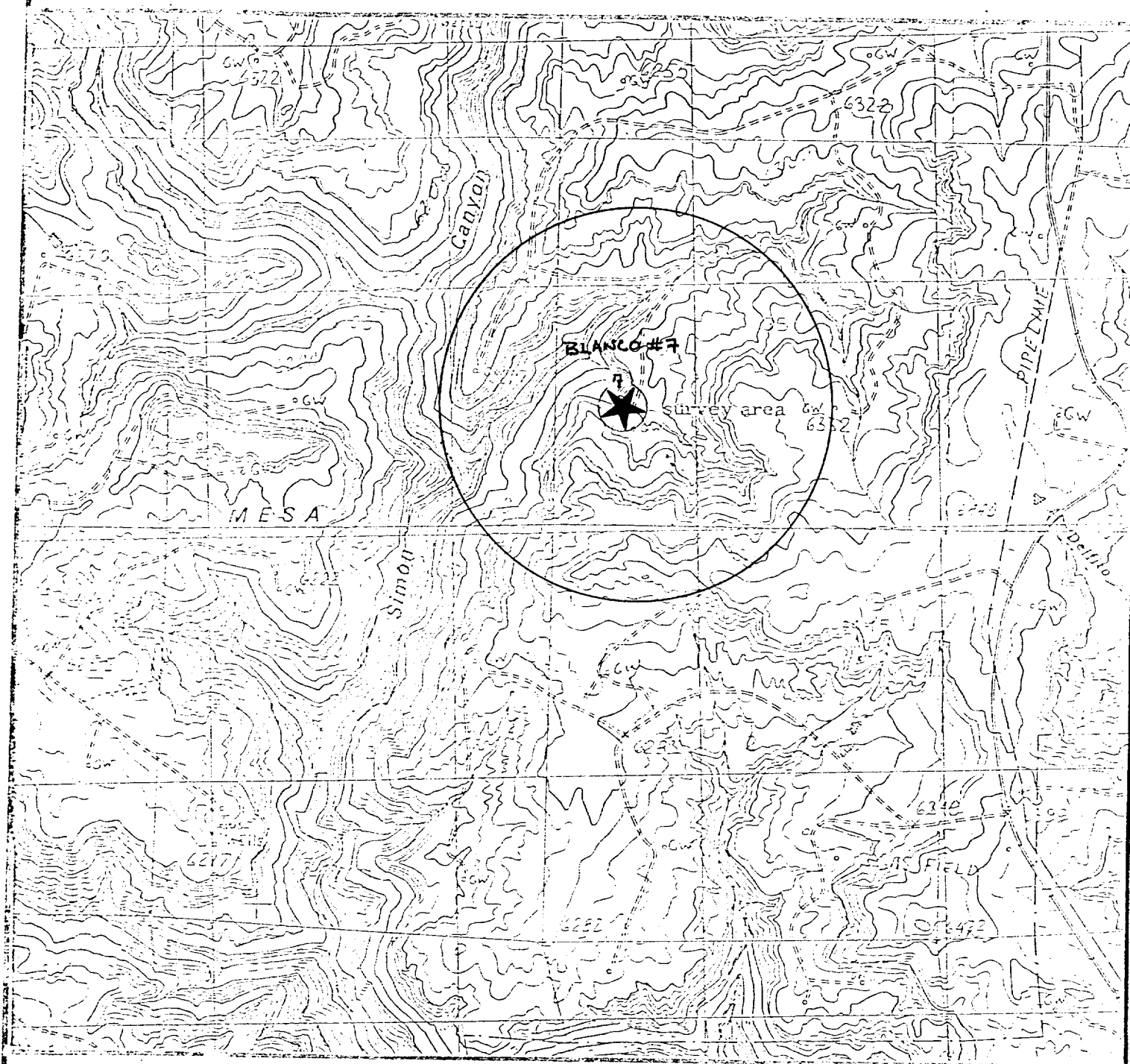
Date Surveyed
May 23, 1989
Signature & Seal of Professional Surveyor
Edgar L. Risenhoover
Certification No. 5979
Edgar L. Risenhoover

NEW MEXICO

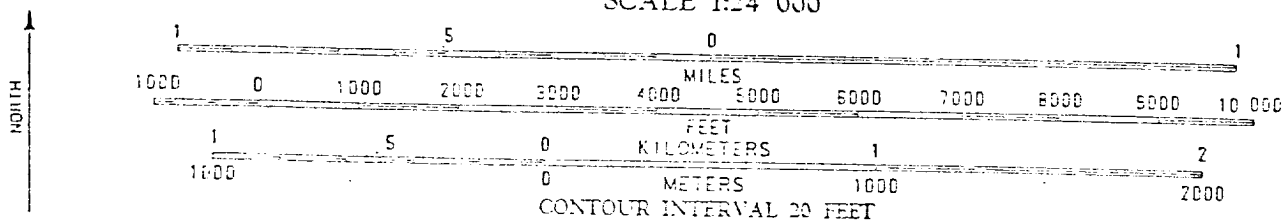
ARCHULETA, NEW MEXICO
PROVISIONAL EDITION 1985

QUADRANGLE LOCATION

36107-G6-TF-024



T31N, R8W
SCALE 1:24 000



Location map for Well No. Blanco #201

UNITED STATES
DEPARTMENT OF THE INTERIOR
BUREAU OF LAND MANAGEMENT

SUBMIT IN TRIPLICATE*
(Other instructions on re-
verse side)

Budget Bureau No. 1004-0135
Expires August 31, 1985

SUNDRY NOTICES AND REPORTS ON WELLS

(Do not use this form for proposals to drill or to deepen or plug back to a different reservoir.
Use "APPLICATION FOR PERMIT—" for such proposals.)

1. OIL WELL ☐ GAS WELL ☒ OTHER ☐ 90 MAR 22 PM 2:25

2. NAME OF OPERATOR
Northwest Pipeline Corporation

3. ADDRESS OF OPERATOR
3539 East 30th Street - Farmington, NM 87401

4. LOCATION OF WELL (Report location clearly and in accordance with any State requirements.*
See also space 17 below.)
At surface NW/SW 1560' FSL & 810' FWL

14. PERMIT NO.
API #30-045-27446

15. ELEVATIONS (Show whether DF, RT, GR, etc.)
6194' GR

5. LEASE IDENTIFICATION AND SERIAL NO.
NM 012641

6. IF INDIAN, ALLOTTEE OR TRIBE NAME

7. UNIT AGREEMENT NAME
Blanco Unit

8. FARM OR LEASE NAME
Blanco Unit

9. WELL NO.
#201

10. FIELD AND POOL, OR WILDCAT
Basin Fruitland Coal

11. SEC., T., R., M., OR BLK. AND SURVEY OR AREA
Sec. 35L, T31N, R8W

12. COUNTY OR PARISH
San Juan

13. STATE
New Mexico

16. Check Appropriate Box To Indicate Nature of Notice, Report, or Other Data

NOTICE OF INTENTION TO:

TEST WATER SHUT-OFF

FRACTURE TREAT

SHOOT OR ACIDIZE

REPAIR WELL

(Other)

PULL OR ALTER CASING

MULTIPLE COMPLETE

ABANDON*

CHANGE PLANS

SUBSEQUENT REPORT OF:

WATER SHUT-OFF

FRACTURE TREATMENT

SHOOTING OR ACIDIZING

(Other) Drilling Operations

REPAIRING WELL

ALTERING CASING

ABANDONMENT*

(NOTE: Report results of multiple completion on Well Completion or Recompletion Report and Log form.)

17. DESCRIBE PROPOSED OR COMPLETED OPERATIONS (Clearly state all pertinent details, and give pertinent dates, including estimated date of starting any proposed work. If well is directionally drilled, give subsurface locations and measured and true vertical depths for all markers and zones pertinent to this work.)*

11-7-89: MOL & RU. Drilled MH & RH. Spudded well at 1330 hrs 11/7/89. Drilled w/ spud mud and bit #1. Ran 5 jts (212') 13-3/8", 48#, H-40, ST&C Hoesch ERW csg. SET at 229' KB. Cemented w/ 260 sx (309 cu.ft.) C1 "B" w/ 3% CaCl₂ and 1/4# cele-flake/sk. Displaced w/ 32 bbls water. Circulated 20 bbls good cement. Plug down at 2200 hrs.

11-8-89: Pressure tested 13-3/8" csg to 600#, held ok.

11-9-89: Drilling w/ Benex.

11-10-89: Drilling w/ Benex.

11-11-89: Drilling w/ Benex. TD'd well w/ mud. Ran 71 jts (2853') 9-5/8", 40#, K-55, ST&C, USS smls csg. Set at 2866' KB. FC at 2823' KB. Cemented w/ 690 sx (1428 cu.ft.) C1 "B" 65/35 poz w/ 12% gel & 1/4# cele-flake/sk. Tailed w/ 125 sx (148 cu.ft.) C1 "B" w/ 1/4# cele-flake/sk. Displaced w/ 215 bbls wtr. Circulated 60 bbls cement. Plug down at 2300 hrs.

11-13-89: Rig released at 0400 hrs.

RECEIVED
MAR 30 1990
OIL CON. L
DIST. 3

18. I hereby certify that the foregoing is true and correct

SIGNED

Carrie Harmon

TITLE

Production Assistant

(This space for Federal or State office use)

APPROVED BY

CONDITIONS OF APPROVAL, IF ANY:

TITLE

DATE

MAR 28 1990

*See Instructions on Reverse Side

DEVIATION REPORT

COMPANY Northwest Pipeline Corp. ADDRESS 3539 E. 30th - Farmington, NM

LEASE Blanco WELL 201 UNIT LETTER L SEC 35 T 31N R 8W

POOL and FORMATION Basin Fruitland Coal COUNTY San Juan

1/4° - 237'
3/4° - 754'
1/2° - 1690'
1/2° - 1997'
3/4° - 2469'
3/4° - 2860'

RECEIVED
APR 27 1990
OIL CON. DIV
DIST. 2

Certificate: I, the undersigned, state that I, Carrie Harmon, acting in my capacity as Production Assistant of Northwest Pipeline Corporation, am authorized by said Company to make this report which was prepared by me or under my supervision and direction; and that the facts stated herein are true to the best of my knowledge and belief.

Subscribed and sworn to before me this 18 day of April, 19 90



OFFICIAL SEAL

KRISTINE E. RUSSELL

NOTARY PUBLIC FOR SAN JUAN COUNTY, NEW MEXICO

My Commission Expires:

My Commission Expires

4-9-92

UNITED STATES
DEPARTMENT OF THE INTERIOR
BUREAU OF LAND MANAGEMENT

SUBMIT IN DUPLICATE*

(See other instructions on reverse side)

Form approved.
Budget Bureau No. 1004-0137
Expires August 31, 1985

WELL COMPLETION OR RECOMPLETION REPORT AND LOG *

1a. TYPE OF WELL: OIL WELL ☐ GAS WELL ☒ DRY ☐ Other _____
b. TYPE OF COMPLETION: NEW WELL ☒ WORK OVER ☐ DEEP-EN ☐ PLUG BACK ☐ DIFF. RENVR. ☐ Other _____

2. NAME OF OPERATOR
Northwest Pipeline Corporation

3. ADDRESS OF OPERATOR
3539 East 30th Street - Farmington, NM 87401

4. LOCATION OF WELL (Report location clearly and in accordance with any State requirements)*
At surface NW/SW 1560' FSL & 810' FWL

At top prod. interval reported below
same as above

At total depth
same as above

14. PERMIT NO. DATE ISSUED
API #30-045-27446

5. LEASE DESIGNATION AND SERIAL NO.

NM 012641

6. IF INDIAN, ALLOTTEE OR TRIBE NAME

7. UNIT AGREEMENT NAME

Blanco Unit

8. FARM OR LEASE NAME

Blanco Unit

9. WELL NO.

#201

10. FIELD AND POOL, OR WILDCAT

Basin Fruitland Coal

11. SEC., T., R., M., OR BLOCK AND SURVEY OR AREA

Sec. 35L, T31N, R8W

12. COUNTY OR PARISH
San Juan

13. STATE
New Mexico

15. DATE SPUDDED 11-7-89 16. DATE T.D. REACHED 3-31-90 17. DATE COMPL. (Ready to prod.) 4-11-90 18. ELEVATIONS (DF, RKB, RT, GR, ETC.)* 6207' KB 19. ELEV. CASINGHEAD 6194' GR

20. TOTAL DEPTH, MD & TVD 3130' 21. PLUG, BACK T.D., MD & TVD 3083' 22. IF MULTIPLE COMPL., HOW MANY* N/A 23. INTERVALS DRILLED BY → ROTARY TOOLS yes CABLE TOOLS

24. PRODUCING INTERVAL(S), OF THIS COMPLETION—TOP, BOTTOM, NAME (MD AND TVD)* 2905'-3079' 25. WAS DIRECTIONAL SURVEY MADE yes

26. TYPE ELECTRIC AND OTHER LOGS RUN Microlog & Sidewall Formation Tester DIL/GR, FDC/CNL/GR, BHC Sonic, Spectral GR, GR/CCL 27. WAS WELL CORED yes

28. CASING RECORD (Report all strings set in well)

CASING SIZE	WEIGHT, LB./FT.	DEPTH SET (MD)	HOLE SIZE	CEMENTING RECORD	AMOUNT PULLED
13-3/8"	48#	229'	17-1/2"	260 sx	
9-5/8"	40#	2866'	12-1/4"	815 sx	

29. LINER RECORD

SIZE	TOP (MD)	BOTTOM (MD)	SACKS CEMENT*	SCREEN (MD)
5-1/2"	2766'	3084'	not cmt'd	

30. TUBING RECORD

SIZE	DEPTH SET (MD)	PACKER SET (MD)
2-7/8"	3051'	

31. PERFORATION RECORD (Interval, size and number)

2905'-2926'
2991'-3013'
3048'-3079'
4 spf total of 296 (.76") holes

32. ACID TREATMENT, GEL, SQUEEZE, ETC.
DEPTH INTERVAL
AMOUNT AND KIND OF MATERIAL USED

RECEIVED
MAY 04 1990
OIL CON. DIV.
DIST. 3

33. PRODUCTION

DATE FIRST PRODUCTION 4-11-90 PRODUCTION METHOD (Flowing, gas lift, pumping—size and type of pump) Flowing WELL STATUS (Producing or shut-in) Shut In

DATE OF TEST HOURS TESTED CHOKE SIZE PROD'N. FOR TEST PERIOD OIL—BBL. GAS—MCF. WATER—BBL. GAS-OIL RATIO
FLOW. TUBING PRESS. CASING PRESSURE CALCULATED 24-HOUR RATE OIL—BBL. GAS—MCF. WATER—BBL. OIL GRAVITY-API (CORR.)
TSTM TSTM TSTM TSTM

34. DISPOSITION OF GAS (Sold, used for fuel, vented, etc.)
Vented - waiting on pipeline connection

TEST WITNESSED BY
FARMINGTON RESOURCE AREA

35. LIST OF ATTACHMENTS
Deviation Report, Casing & Cementing Report

36. I hereby certify that the foregoing and attached information is complete and correct as determined from all available records

SIGNED Carrie Harmon TITLE Production Assistant DATE 4-25-90

*(See Instructions and Spaces for Additional Data on Reverse Side)

37. SUMMARY OF POROUS ZONES: (Show all important zones of porosity and contents thereof; cored intervals; and all drill-stem, tests, including depth interval tested, cushion used, time tool open, flowing and shut-in pressures, and recoveries):

FORMATION	TOP	BOTTOM	DESCRIPTION, CONTENTS, ETC.	NAME	TOP	
					MEAS. DEPTH	TRUE VERT. DEPTH
Ojo Alamo Kirtland Fruitland TD	1990' est 2075' est 2775' est 3130'	2075' est 2775' est 3130'	<div style="transform: rotate(180deg);"> 2075' est 2775' est 3130' </div>			

GEOLOGIC MARKERS

38.

CASING AND CEMENTING REPORT
(Blanco #201)

Hole Size 17-1/2"

13-3/8", 48#, H-40, ST&C Hoesch ERW csg. Set at 229' KB. Cemented w/ 260 sx (309 cu.ft.) Cl "B" w/ 3% CaCl_2 and 1/4# cele-flake/sk.

Hole Size 12-1/4"

9-5/8", 40#, K-55, ST&C, USS smls csg. Set at 2866'. Cemented w/ 690 sx (1428 cu.ft) Cl "B" 65/35 poz w/ 12% gel & 1/4# cele-flake/sk. Tailed w/ 125 sx (148 cu.ft.) Cl "B" w/ 1/4# cele-flake/sk.

Hole Size 6-1/4"

5-1/2", 23#, P110, LT&C USS smls csg. Liner set from 2766' to 3084'. Not cemented.

Carrie Harmon
Carrie Harmon

4-18-90
Date