

UNITED STATES
DEPARTMENT OF THE INTERIOR
BUREAU OF LAND MANAGEMENT

APPLICATION FOR PERMIT TO DRILL, DEEPEN, OR PLUG BACK

1A. TYPE OF WORK

DRILL ☒ DEEPEN ☐ PLUG BACK ☐

b. TYPE OF WELL

OIL WELL ☐ GAS WELL ☒ OTHER ☐ SINGLE ZONE ☐ MULTIPLE ZONE ☐

2. NAME OF OPERATOR

Northwest Pipeline Corporation

3. ADDRESS OF OPERATOR

3539 East 30th Street - Farmington, NM 87401

4. LOCATION OF WELL (Report location clearly and in accordance with any State requirements.)*

At surface 1125' FSL & 1850' FWL SE/4 SW/4

- At proposed prod. zone

Same

14. DISTANCE IN MILES AND DIRECTION FROM NEAREST TOWN OR POST OFFICE*

6 miles northwest of Navajo Dam, New Mexico

15. DISTANCE FROM PROPOSED*

LOCATION TO NEAREST PROPERTY OR LEASE LINE, FT. 1125'
(Also to nearest drlg. unit line, if any)

18. DISTANCE FROM PROPOSED LOCATION*

TO NEAREST WELL, DRILLING, COMPLETED, OR APPLIED FOR, ON THIS LEASE, FT. 300'

16. NO. OF ACRES IN LEASE

840

19. PROPOSED DEPTH

3228'

17. NO. OF ACRES ASSIGNED TO THIS WELL

320

20. ROTARY OR CABLE TOOLS

Rotary

21. ELEVATIONS (Show whether DF, RT, GR, etc.)

6324' GR

22. APPROX. DATE WORK WILL START*

8-28-89

23.

This action is subject to technical and procedural review pursuant to 43 CFR 3165.3 and appeal pursuant to 43 CFR 3165.4.

Drilling operations authorized and subject to compliance with attached

SIZE OF HOLE	SIZE OF CASING	SETTING DEPTH	GENERAL QUANTITY OF MUD
13-1/2"	9-5/8"	200'	195 cu.ft.
8-3/4"	7"	2912'	221 cu.ft.
6-1/4"	5-1/2"	2812'-3228'	None

1) Plan to drill Fruitland Formation from 2932' to 3228' and complete open hole with a perforated liner in coal zones.

2) The west half of Section 22 is dedicated to this well.

RECEIVED
AUG 1 1989
OIL CON. DIV
DIST. 3

IN ABOVE SPACE DESCRIBE PROPOSED PROGRAM: If proposal is to deepen or plug back, give data on present productive zone and proposed new productive zone. If proposal is to drill or deepen directionally, give pertinent data on subsurface locations and measured and true vertical depths. Give blowout preventer program, if any.

24.

SIGNED J.R. Vaughan TITLE Prod. & Drlg. Engineer

DATE 7-31-89

(This space for Federal or State office use)

PERMIT NO. _____ APPROVAL DATE _____

APPROVED BY _____ TITLE _____

CONDITIONS OF APPROVAL, IF ANY:

APPROVED
AS AMENDED

AUG 14 1989

AREA MANAGER

*See Instructions On Reverse Side

Submit to Appropriate
District Office
State Lease - 4 copies
Fee Lease - 3 copies

State of New Mexico
Energy, Minerals and Natural Resources Department

Form C-102
Revised 1-1-89

OIL CONSERVATION DIVISION

P.O. Box 2088
Santa Fe, New Mexico 87504-2088

DISTRICT I
P.O. Box 1980, Hobbs, NM 88240

DISTRICT II
P.O. Drawer DD, Artesia, NM 88210

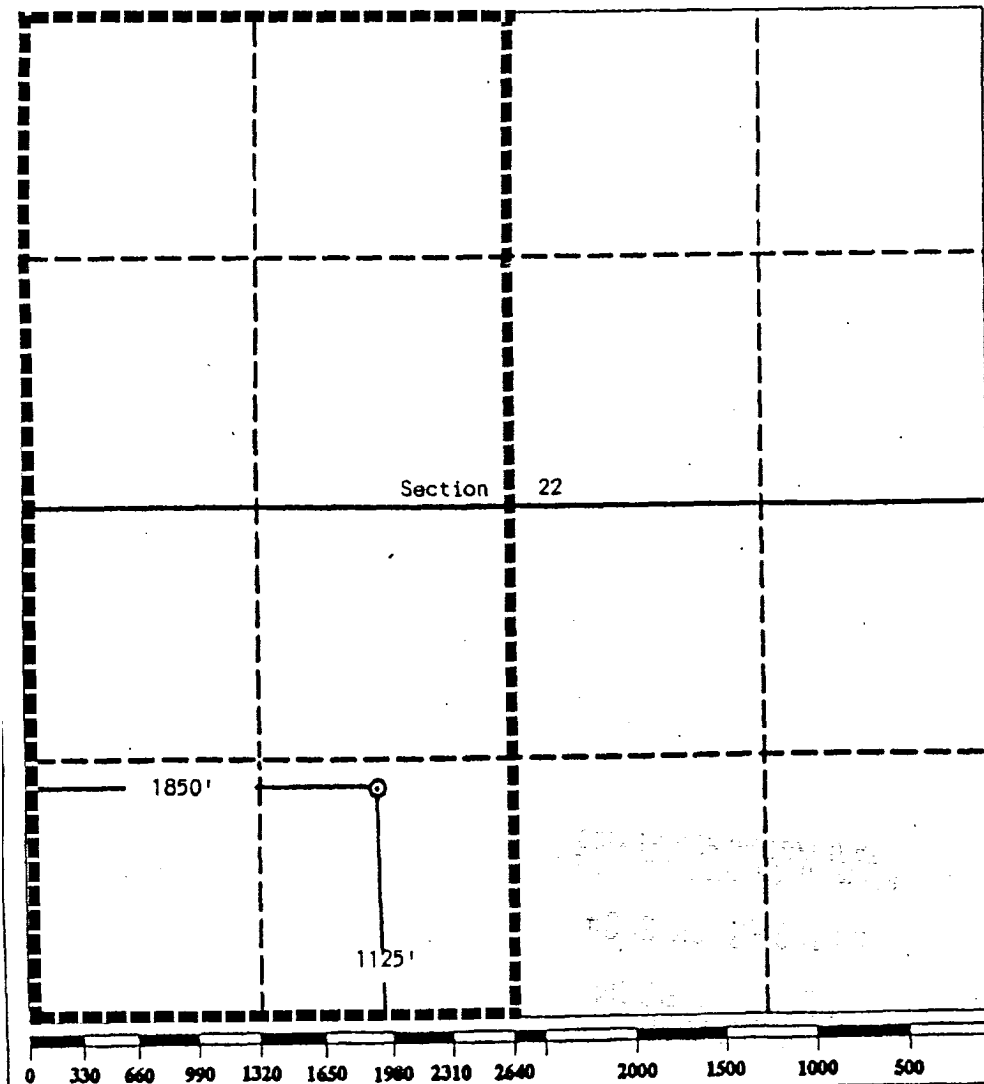
DISTRICT III
000 Rio Brazos Rd., Aztec, NM 87410

WELL LOCATION AND ACREAGE DEDICATION PLAT

All Distances must be from the outer boundaries of the section

Operator Northwest Pipeline Corporation			Lease San Juan 32-8		Well No. 207
Unit Letter N	Section 22	Township 31 North	Range 8 West NMPM	County San Juan	
Actual Footage Location of Well: 1125 feet from the South line and 1850 feet from the West line					
Ground level Elev. 6324	Producing Formation Fruitland	Pool Basin Fruitland Pool		Dedicated Acreage: 320 Acres	

- Outline the acreage dedicated to the subject well by colored pencil or hatchure marks on the plat below.
- If more than one lease is dedicated to the well, outline each and identify the ownership thereof (both as to working interest and royalty).
- If more than one lease of different ownership is dedicated to the well, have the interest of all owners been consolidated by communitization, unitization, force-pooling, etc?
☒ Yes ☐ No If answer is "yes" type of consolidation Unitization
If answer is "no" list the owners and tract descriptions which have actually been consolidated. (Use reverse side of this form if necessary.)
No allowable will be assigned to the well until all interests have been consolidated (by communitization, unitization, forced-pooling, or otherwise) or until a non-standard unit, eliminating such interest, has been approved by the Division.



OPERATOR CERTIFICATION

I hereby certify that the information contained herein is true and complete to the best of my knowledge and belief.

Signature

Printed Name

Jeff Vaughan

Position

Prod. & Drilg. Eng.

Company

Northwest Pipeline Corp.

Date

7/25/89

SURVEYOR CERTIFICATION

I hereby certify that the well location shown on this plat was plotted from field notes of actual surveys made by me or under my supervision, and that the same is true and correct to the best of my knowledge and belief.

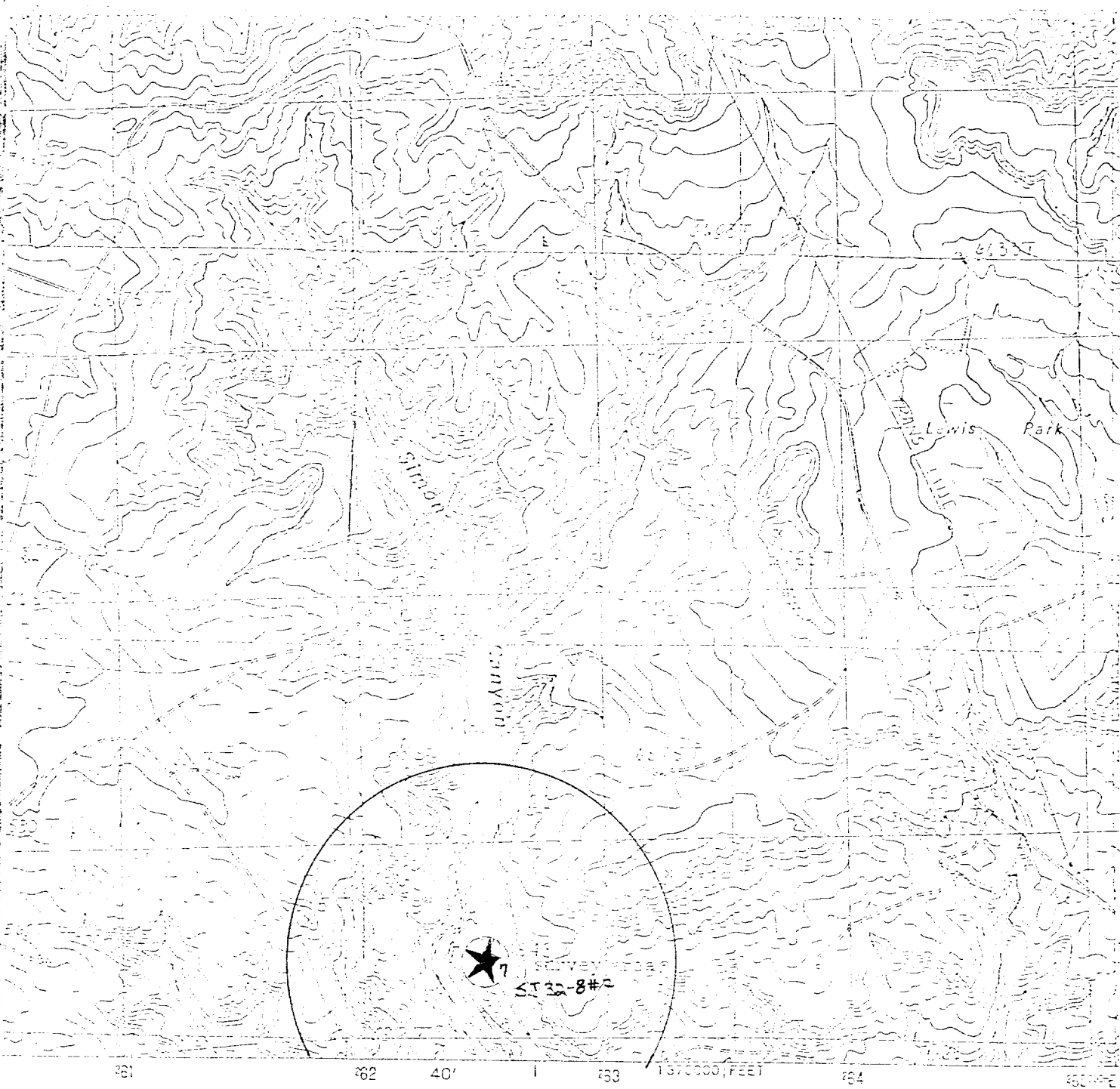
Date Surveyed

JULY 25 1989

Signature

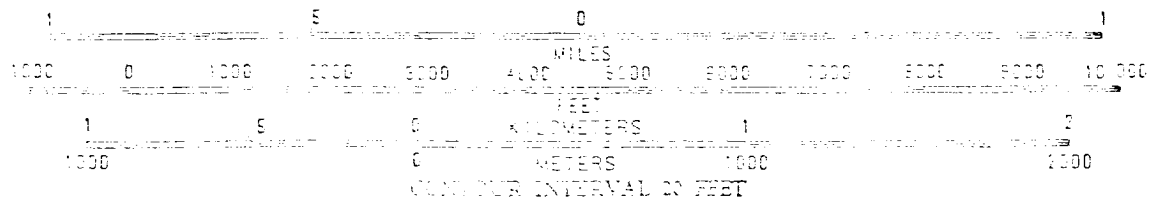
Professional

EDGAR L. RISENHOOVER
NEW MEXICO
5979
Certified for Surveying
Edgar L. Risenhoover, L.S.



T31N, R8W
SCALE 1:24 000

NORTH



Location map for Well No. S.J. 32-8 #207